

## Loss of $n\text{cm}^5$ and $m\text{cm}^5$ wobble uridine side chains results in an altered metabolic profile

Tony Karlsborn<sup>1</sup>, A K M Firoj Mahmud<sup>1†</sup>, Hasan Tükenmez<sup>1†</sup> and Anders S. Byström<sup>1,\*</sup>

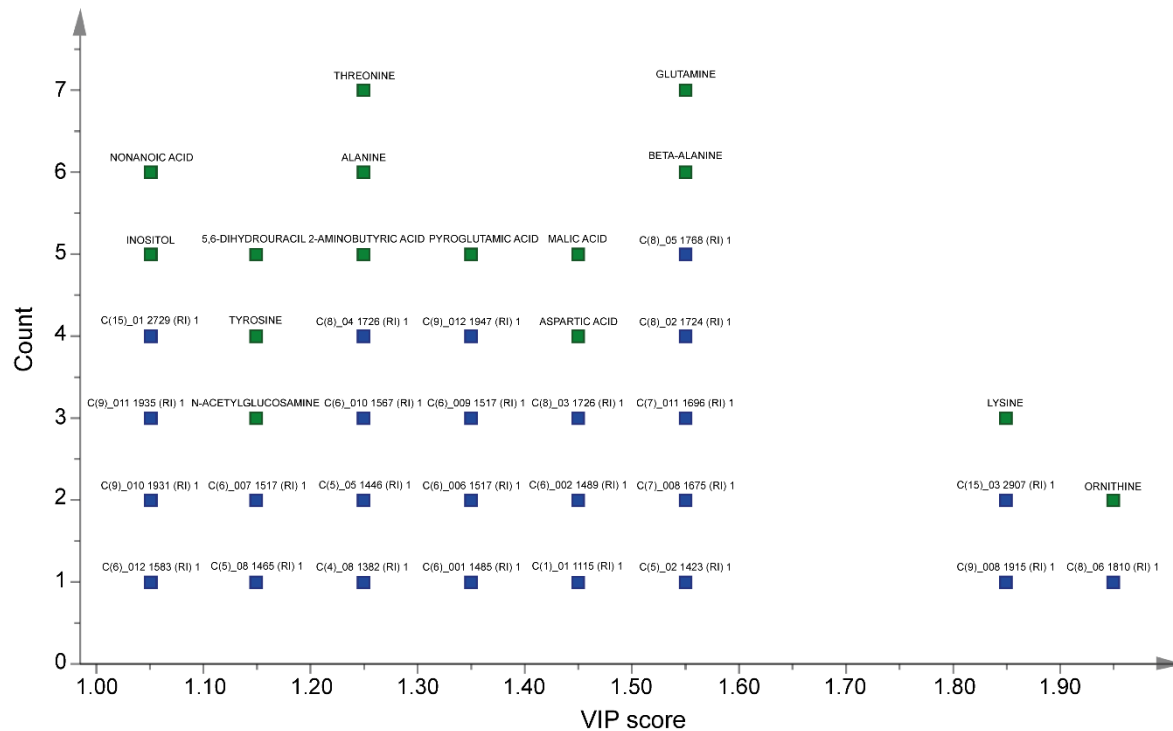
1) Department of Molecular Biology, Umeå University, 901 87 Umeå, Sweden

† These authors contributed equally

\* Corresponding author, Phone (+46)-90-785 67 64; Fax (+46)-90-77 26 30

E-mail address, [Anders.Bystrom@molbiol.umu.se](mailto:Anders.Bystrom@molbiol.umu.se)

Metabolomics-Springer



**Online Resource 5. Identified and unidentified metabolites that separate the *elp3Δ*-l.c.-empty and *elp3Δ*-l.c.-ELP3 strains grown at 30°C.** The *elp3Δ* strain containing either an empty low copy pRS315 vector or a pRS315 vector carrying the wild-type *ELP3* gene was grown logarithmically to an  $\text{OD}_{600}$  of ~0.5 and harvested (see material and methods). Metabolites were extracted and then quantified using GC-TOF-MS. Values obtained were normalized and  $\log_2$ -transformed, and metabolic alterations were analyzed using PLS-DA. Metabolites shown have a VIP score >1. The X-axis displays the VIP score and the Y-axis displays the number of metabolites (Count) that fit into a particular group based on VIP score. Identified metabolites are labeled with green squares, and unidentified metabolites with blue squares.