

Loss of $n\text{cm}^5$ and $m\text{cm}^5$ wobble uridine side chains results in an altered metabolic profile

Tony Karlsborn¹, A K M Firoj Mahmud^{1†}, Hasan Tükenmez^{1†} and Anders S. Byström^{1,*}

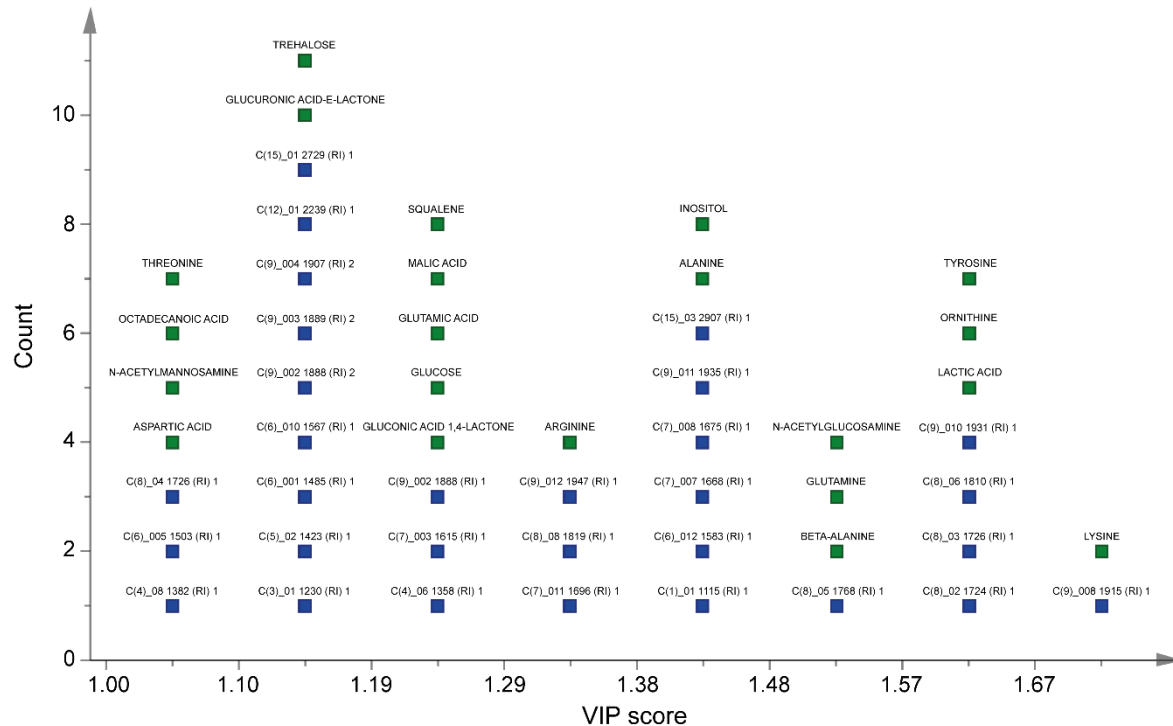
1) Department of Molecular Biology, Umeå University, 901 87 Umeå, Sweden

† These authors contributed equally

* Corresponding author, Phone (+46)-90-785 67 64; Fax (+46)-90-77 26 30

E-mail address, Anders.Bystrom@molbiol.umu.se

Metabolomics-Springer



Online Resource 6. Identified and unidentified metabolites that separate the *elp3Δ*-l.c.-empty and *elp3Δ*-l.c.-ELP3 strains grown at 34°C. The *elp3Δ* strain containing either an empty low copy pRS315 vector or a pRS315 vector carrying the wild-type *ELP3* gene was grown logarithmically to an OD_{600} of ~ 0.5 and harvested (see material and methods). Metabolites were extracted and then quantified using GC-TOF-MS. Values obtained were normalized and \log_2 -transformed, and metabolic alterations were analyzed using PLS-DA. Metabolites shown have a VIP score > 1 . The X-axis displays the VIP score and the Y-axis displays the number of metabolites (Count) that fit into a particular group based on VIP score. Identified metabolites are labeled with green squares, and unidentified metabolites with blue squares.