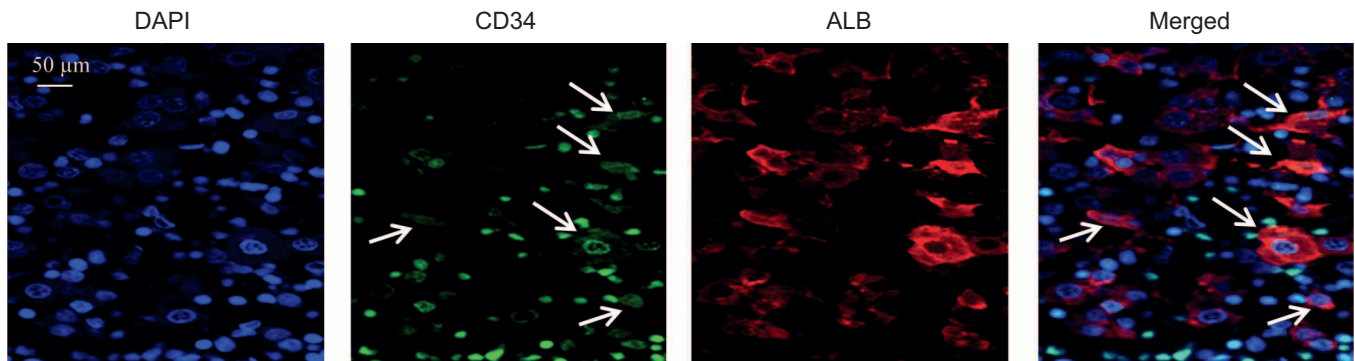


Supplementary Table 1. Primers for qPCR. Primer sequences for endoderm, general endoderm and mesoderm genes.

Genes	Sense	Antisense
AFP	AGTGAGGACAAACTATTGGCCT	ACACCAGGGTTTACTGGAGTC
ALB	GAGACCAGAGGTTGATGTGATG	AGTTCCGGGGCATAAAAAGTAAG
ANGPTL1	AGAAAGGAAAGCCGTAACATGAA	TCCCTGTATCTTGTGGCCATCT
ANGPTL2	GAACCGAGTGATAAGCAGGA	GTGACCCGCGAGTTCATGTT
ANGPTL3	CATCTAGTTGCGATTACTGGCA	CCTCCTGAATAACCCTCTGGA
ANGPTL4	GGCTCAGTGGACTTCAACCG	CCGTGATGCTATGCACCTTCT
ANGPTL5	AAAATGCAATGCCTTTTAGCACA	GGTCTTGTATGGAGGTGACTG
ANGPTL6	CCGTCACGTAGTGTCAGTATGG	GCTGCCAGGTAGTGAAGAAGTT
CD73	AAGGACTGATCGAGCCACTC	GGAAGTGTATCCAACGATTCCCA
CEBPB	CTTCAGCCCGTACTGGAG	GGAGAGGAAGTCGTGGTGC
CK7	TCCGCGAGGTCACCATTAAC	GCTCTGTCAACTCCGTCTCAT
CK19	ACCAAGTTTGAGACGGAACAG	CCCTCAGCGTACTGATTCCT
CXCL12	ATTCTCAACTCCAAACTGTGC	ACTTTAGCTTCGGGTCAATGC
DLK1	AGGGTCCCCTTTGTGACCA	GCAGGCCCGAACATCTCTATC
EGR1	ACCCCTCTGTCTACTATTAAGGC	TGGGACTGGTAGCTGGTATTG
GATA4	GTGTCCCAGACGTTCTCAGTC	GGGAGACGCATAGCCTTGT
IGF2	GTGGCATCGTTGAGGAGTG	CACGTCCCTCTCGGACTTG
IRF1	ATGCCCATCACTCGGATGC	CCCTGCTTTGTATCGGCCTG
Laminin	CCCACTCGTCTTCTCTCTC	AGTTTCCGAAGTACCTAGCC
LZM	GGCCAAATGGGAGAGTGGTTA	CCAGTAGCGGCTATTGATCTGAA
MNDA	AACTGACATCGGAAGCAAGAG	CCTGATTCGGAGTAAACGAAGTG
MPO	TTCTACAATGACTCAGTGGACC	CATGAAGGGTTGGATGAGGGT
PU.1	GTGCCCTATGACACGGATCTA	AGTCCCAGTAATGGTCGCTAT
SCF	AATCCTCTCGTCAAACCTGAAGG	CCATCTCGCTTATCCAACAATGA
SOX7	CCTTACTACCGGAGTTCACA	GAAACCCCTGGGGATTGGC
VE – Cadherin	G TTCACGCATCGGTTGTTCAA	CGCTTCCACCACGATCTCATA



Supplementary Figure 1. Distribution of CD34⁺ALB⁺ and CD34⁺ALB⁻ cells in human fetal liver. Human fetal Liver paraffin sections were prepared and stained with antibodies specific for human CD34 and ALB. Blue: DAPI. Green: CD34. Red: Albumin (ALB) and an image with DAPI, CD34 and ALB merged. Shown are representative images from two different experiments. Scale bar applies to all panels.