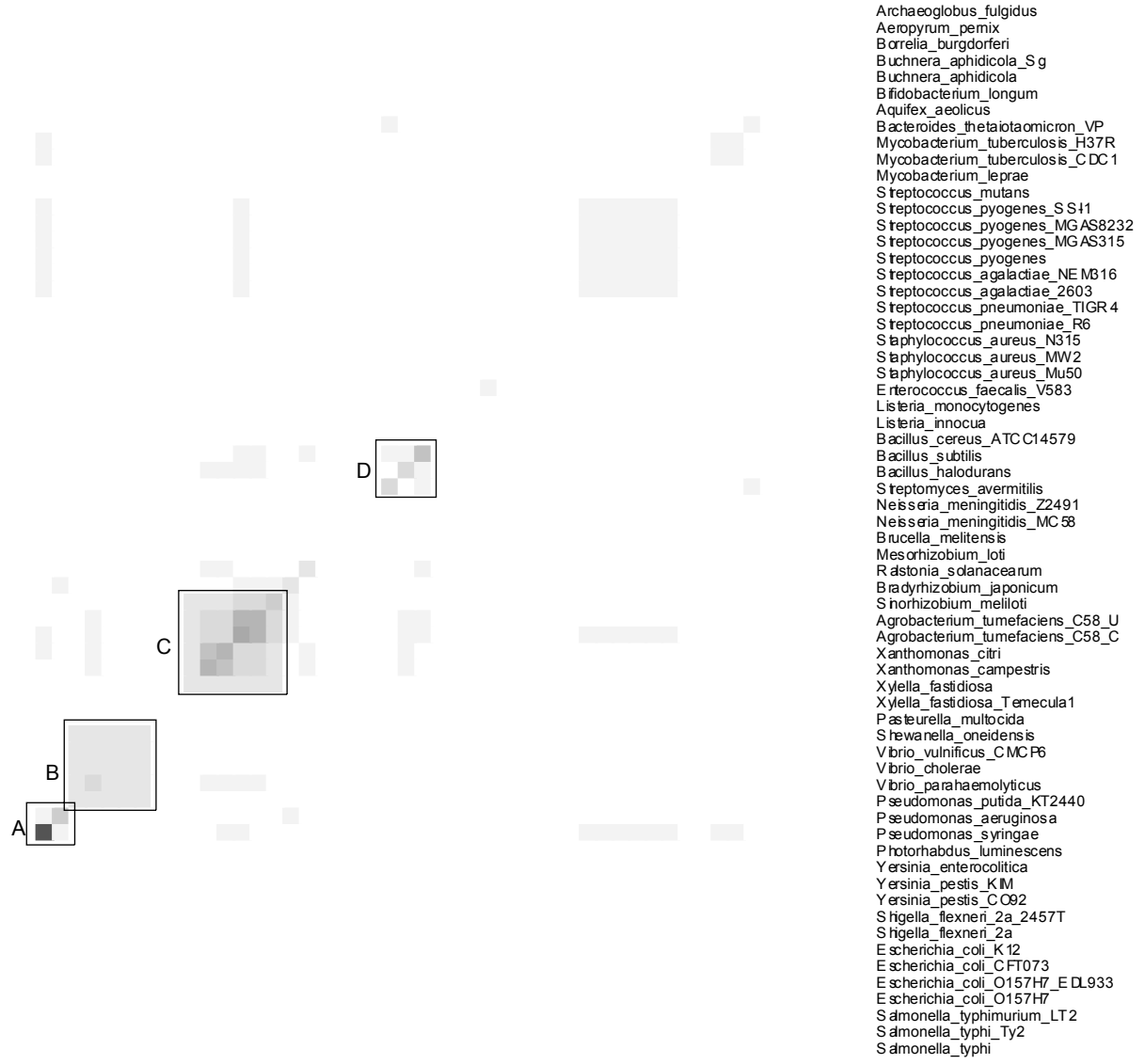


Salmonella typhi
Salmonella typhimurium LT2
Escherichia coli O157:H7
Escherichia coli O157:H7_E DL933
Escherichia coli CFT073
Escherichia coli K12
Shigella flexneri_2a
Shigella flexneri_2a_2457T
Yersinia pestis CO92
Yersinia pestis KIM
Yersinia enterocolitica
Photobacterium luminescens
Pseudomonas syringae
Pseudomonas aeruginosa
Pseudomonas putida KT2440
Vibrio parahaemolyticus
Vibrio cholerae
Vibrio vulnificus CMC96
Stenotrophomonas maltophilia
Pasteurella multocida
Xylella fastidiosa Temecula1
Xylella fastidiosa
Xanthomonas campestris
Xanthomonas citri
Agrobacterium tumefaciens C58_C
Agrobacterium tumefaciens C58_U
Sinorhizobium meliloti
Bradyrhizobium japonicum
Rhizobium loti
Mesorhizobium loti
Bruceella melitensis
Neisseria meningitidis MC88
Neisseria meningitidis Z2491
Streptomyces avermitilis
Bacillus halodurans
Bacillus subtilis
Bacillus cereus ATCC14579
Listeria innocua
Listeria monocytogenes
Enterococcus faecalis V583
Staphylococcus aureus Mu50
Staphylococcus aureus MW2
Staphylococcus aureus N315
Streptococcus pneumoniae R6
Streptococcus pneumoniae TIGR 4
Streptococcus agalactiae 2603
Streptococcus agalactiae NEM316
Streptococcus pyogenes
Streptococcus pyogenes MGAS315
Streptococcus pyogenes MGAS8232
Streptococcus pyogenes SS11
Streptococcus mutans
Mycobacterium leprae
Mycobacterium tuberculosis CDC1
Mycobacterium tuberculosis H37R
Bacteroides thetaiotaomicron VP
Aquifex aeolicus
Bifidobacterium longum
Buchnera aphidicola
Buchnera aphidicola Sg
Borrelia burgdorferi
Aeropyrum pernix
Archaeoglobus fulgidus



Archaeoglobus fulgidus
Aeropyrum pernix
Borrelia burgdorferi
Buchnera aphidicola_Sg
Buchnera aphidicola
Bifidobacterium longum
Aquifex aeolicus
Bacteroides thetaiotaomicron VP
Mycobacterium tuberculosis_H37R
Mycobacterium tuberculosis_CDC 1
Mycobacterium leprae
Streptococcus mutans
Streptococcus pyogenes_SS11
Streptococcus pyogenes_MGAS8232
Streptococcus pyogenes_MGAS315
Streptococcus pyogenes
Streptococcus agalactiae_NE M316
Streptococcus agalactiae_2603
Streptococcus pneumoniae_TIGR 4
Streptococcus pneumoniae_R6
Staphylococcus aureus_N315
Staphylococcus aureus_MW2
Staphylococcus aureus_Mu50
Enterococcus faecalis_V583
Listeria monocytogenes
Listeria innocua
Bacillus cereus_ATCC14579
Bacillus subtilis
Bacillus halodurans
Streptomyces avermitilis
Neisseria meningitidis_Z2491
Neisseria meningitidis_MC88
Bruceella melitensis
Mesorhizobium loti
Rhizobium loti
Bradyrhizobium japonicum
Sinorhizobium meliloti
Agrobacterium tumefaciens_C58_U
Agrobacterium tumefaciens_C58_C
Xanthomonas citri
Xanthomonas campestris
Xylella fastidiosa
Xylella fastidiosa_Temecula1
Pasteurella multocida
Stenotrophomonas maltophilia
Vibrio vulnificus_CMC96
Vibrio cholerae
Vibrio parahaemolyticus
Pseudomonas putida_KT2440
Pseudomonas aeruginosa
Pseudomonas syringae
Photobacterium luminescens
Yersinia enterocolitica
Yersinia pestis_KIM
Yersinia pestis_CO92
Shigella flexneri_2a_2457T
Shigella flexneri_2a
Escherichia coli_K12
Escherichia coli_CFT073
Escherichia coli_O157:H7_E DL933
Escherichia coli_O157:H7
Salmonella typhimurium_LT2
Salmonella typhi_Ty2
Salmonella typhi