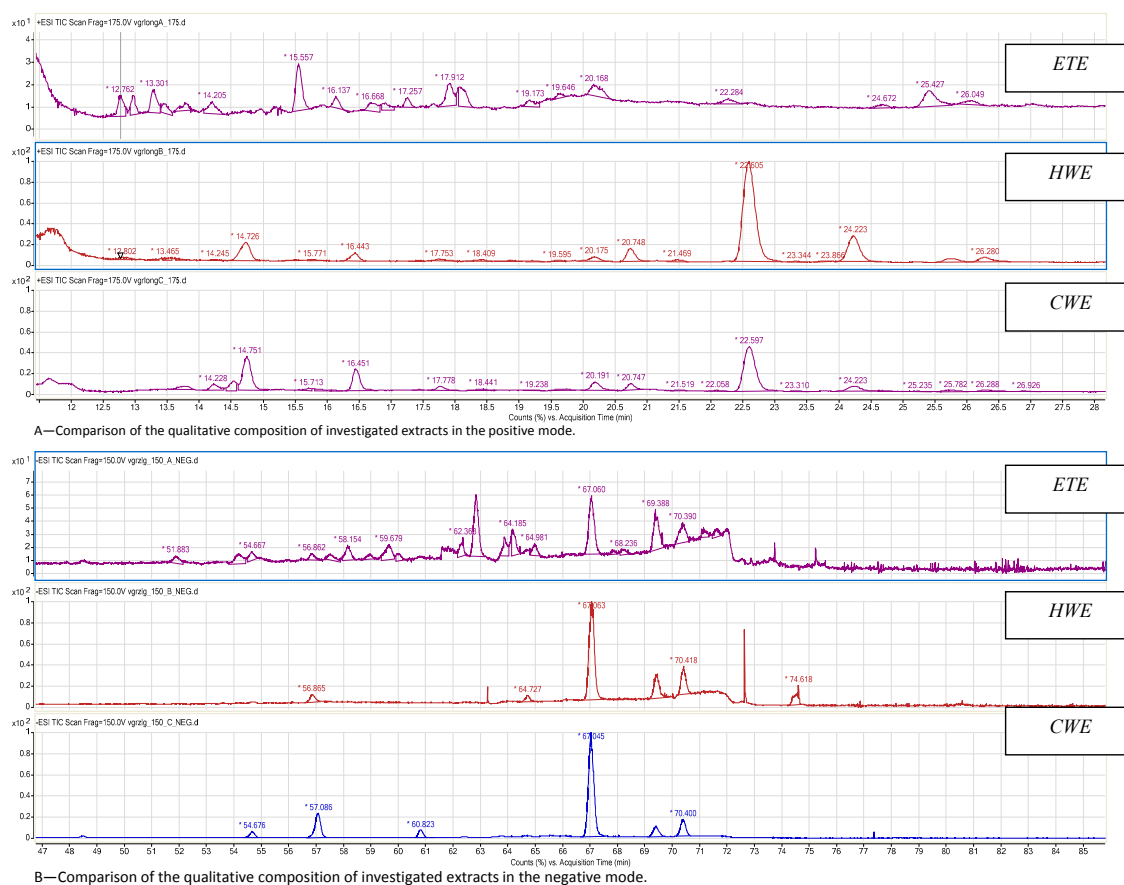


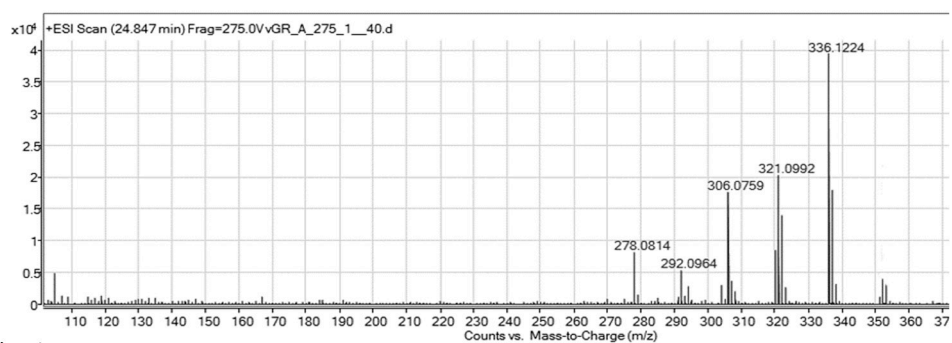
# Supplementary Materials: Evaluation of the Anthelmintic Activity and Composition of Pumpkin (*Cucurbita pepo* L.) Seed Extracts—In Vitro and in Vivo Studies

Maciej Grzybek, Wirginia Kukuła-Koch, Aneta Strachecka, Aleksandra Jaworska, Andrew M. Phiri, Krzysztof Tomczuk and Jerzy Paleolog

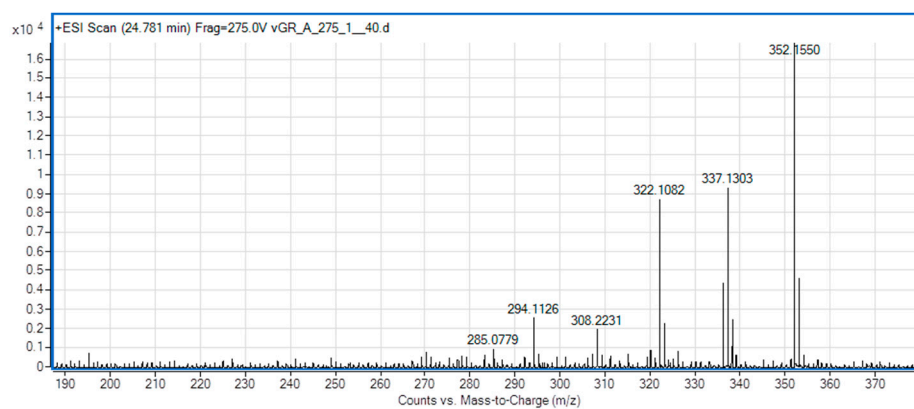


**Figure S1.** Differences in the qualitative composition of extracts, depending on the mass spectrometer operation mode. **(A)** comparison of the qualitative composition of investigated extracts in the positive mode; **(B)** comparison of the qualitative composition of investigated extracts in the negative mode.

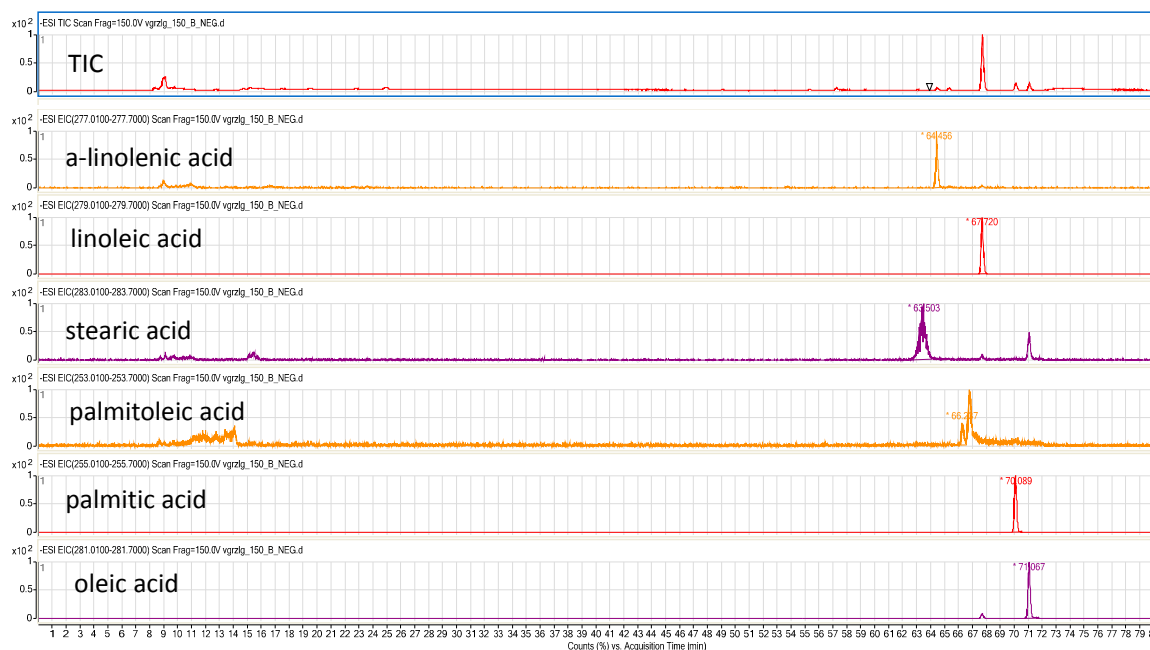
**Berberine**



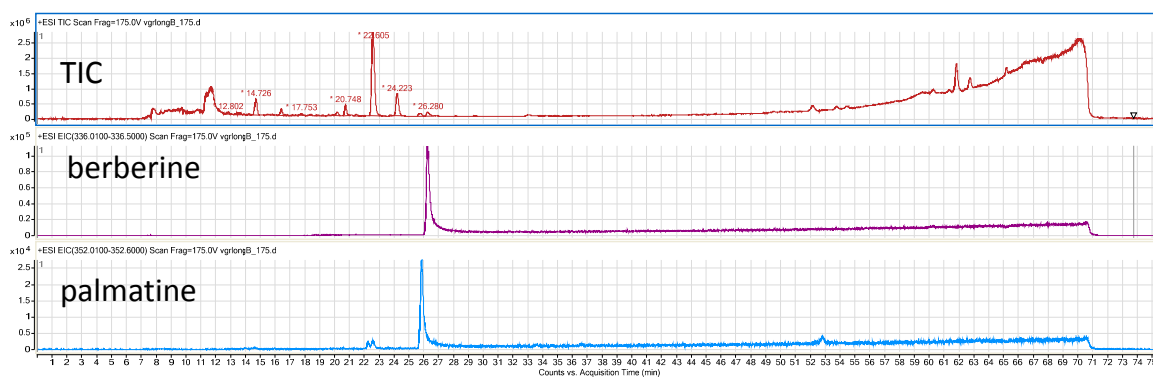
**Palmatine**



**Figure S2.** Fragmentation pattern of berberine and palmatine in the *C. pepo* L. extracts in the given analysis conditions.



**Figure S3.** Extracted Ion Chromatograms (EIC) spectra of fatty acids in a *C. pepo* L. hot water extract (HWE). "\*" —retention time of a compound in the optimized method.



**Figure S4.** Extracted Ion Chromatograms (EIC) of berberine and palmitine in the HWE extract of *C. pepo* L. and their fragmentation patterns. "\*" —retention time of a compound in the optimized method.