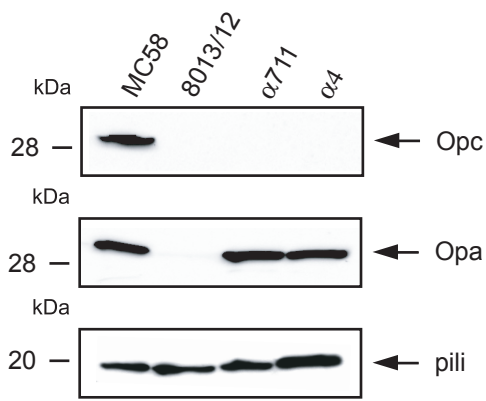


**A****B**

— Poly C —

```

MC58      TATATGTAAAAATCCCCCCCCCGAAAGCTTAAGAATATAATGTAGCGTAACGATTA
alpha711  TATATGTAAAAAT---CCCCCCCCCGAAAGCTTAAGAATATAATGTAGCGTAACGATTA
          *****                               Start codon
MC58      TTTACGTTATGTTACCATATCCGACTACAATCCAAATTTAGAGGTTTAACTATGAAAA
alpha711  TTTACGTTATGTTACCATATCCGACTACAATCCAAATTTAGAGGTTTAACTATGAAAA
          *****
MC58      AAACAGTTTTTACATGTGCCATGATTGCCCTGACCGGTACTGCCGCCGCTGCACAAGAGC
alpha711  AAACAGTTTTTACATGTGCCATGATTGCCCTGACCGGTACTGCCGCCGCTGCACAAGAGC
          *****
MC58      TTCAAACCGCTAATGAGTTTACCGTCCACA
alpha711  TTCAAACCGCTAATGAGTTTACCGTCCACA
          *****

```

Figure S1

## Figure legend

## Figure S1

(A) Immunoblotting of whole-cell lysates from strains of *N. meningitidis* MC58, 8013/clone12 and carrier isolates  $\alpha$ 711 and  $\alpha$ 4 using Opc-specific MAb B306, 4B12/C11 pan-Opa antibody and SM1 MAb specifically recognizing class I pilin types.

(B) Sequence alignment of the *opc* promoter region of strain MC58 and  $\alpha$ 711. Tract of contiguous C residues (poly-C) is shown.