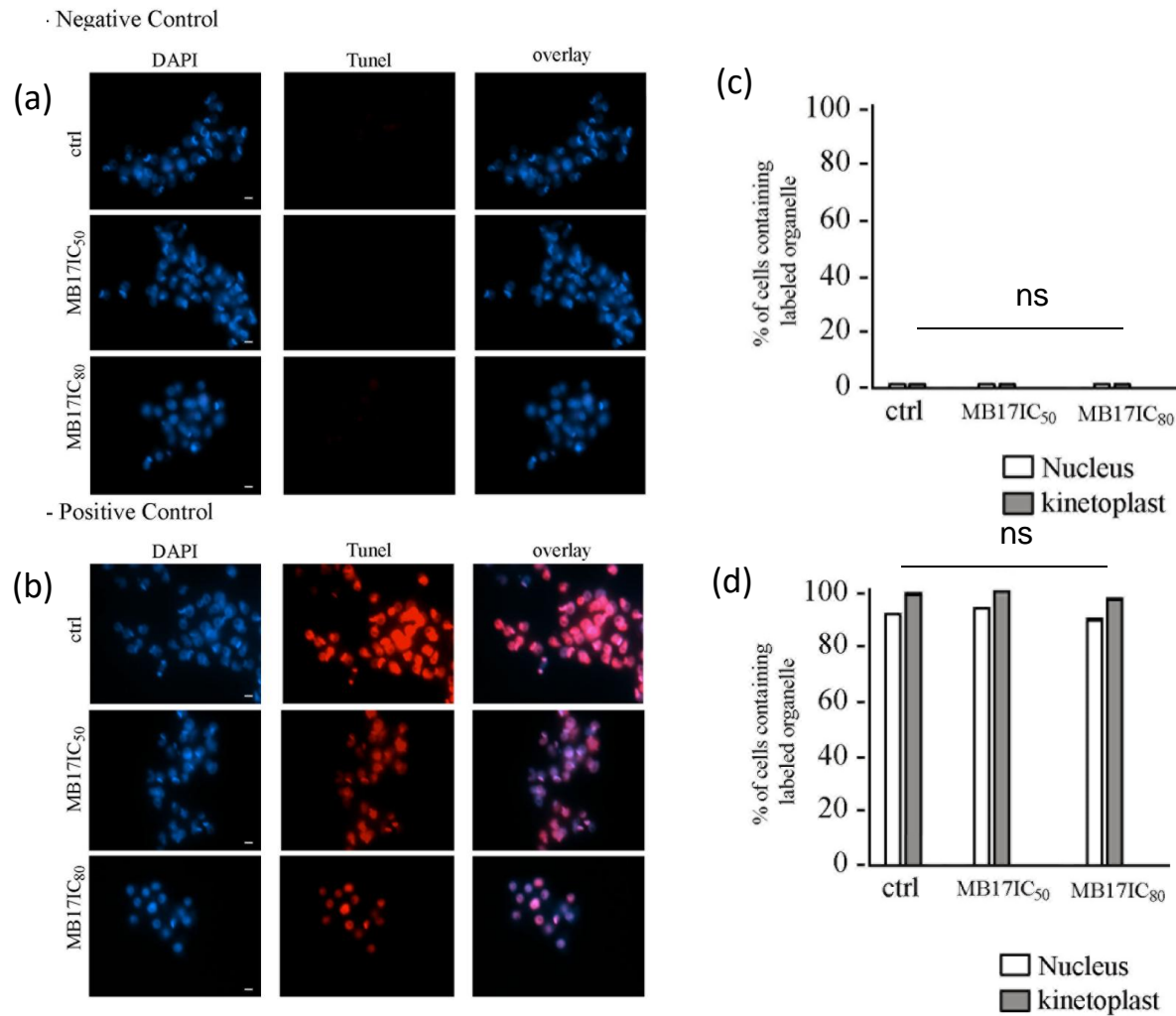


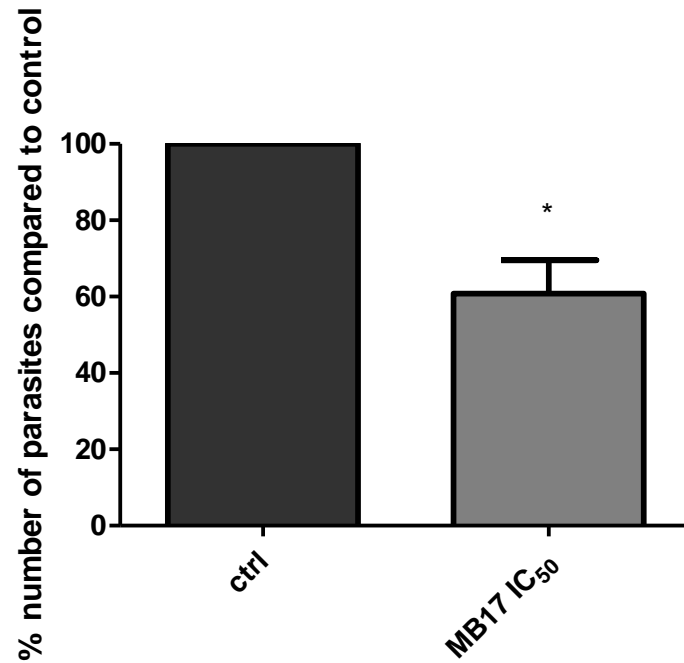
**Supplementary Figure 1: Percentage of double flagellated (DF) parasites after five days of treatment.**

At the fifth day, treated and untreated epimastigotes were counted. Then the percentage of double flagellated parasites (compared to control) were computed. T test: \*:  $p < 0.05$ ; \*\*:  $p < 0.01$ ; \*\*\*:  $p < 0.001$ .

Figure spp 2



**Supplementary figure 2: Control cells and cells treated with MB17 IC<sub>50</sub> or MB17 IC<sub>80</sub> were submitted to standard controls for TUNEL assay.** Positive and negative controls were performed (panels a and b, respectively) are shown stained with DAPI, TUNEL system (red) or as superimposed images (overlay). Negative control **(a)**:, the assay was done in the absence of Terminal transferase (TdT) enzyme. Positive control **(b)**: the cells were treated with DNase I. The percentage of TUNEL positive nuclei or kinetoplasts were recorded for 100 cells for negative control **(c)** or positive control **(d)**. The bar correspond to 2  $\mu$ m.



**Supplementary figure 3: Percentage of mobile and double flagelled parasites after five days of treatment.** At the fifth day, treated and untreated epimastigotes were counted. Then the percentage of motile parasites (compared to control) were computed. T test: \*:  $p < 0.05$ ; \*\*:  $p < 0.01$ ; \*\*\*:  $p < 0.001$ .