

# Supplementary Figure 1

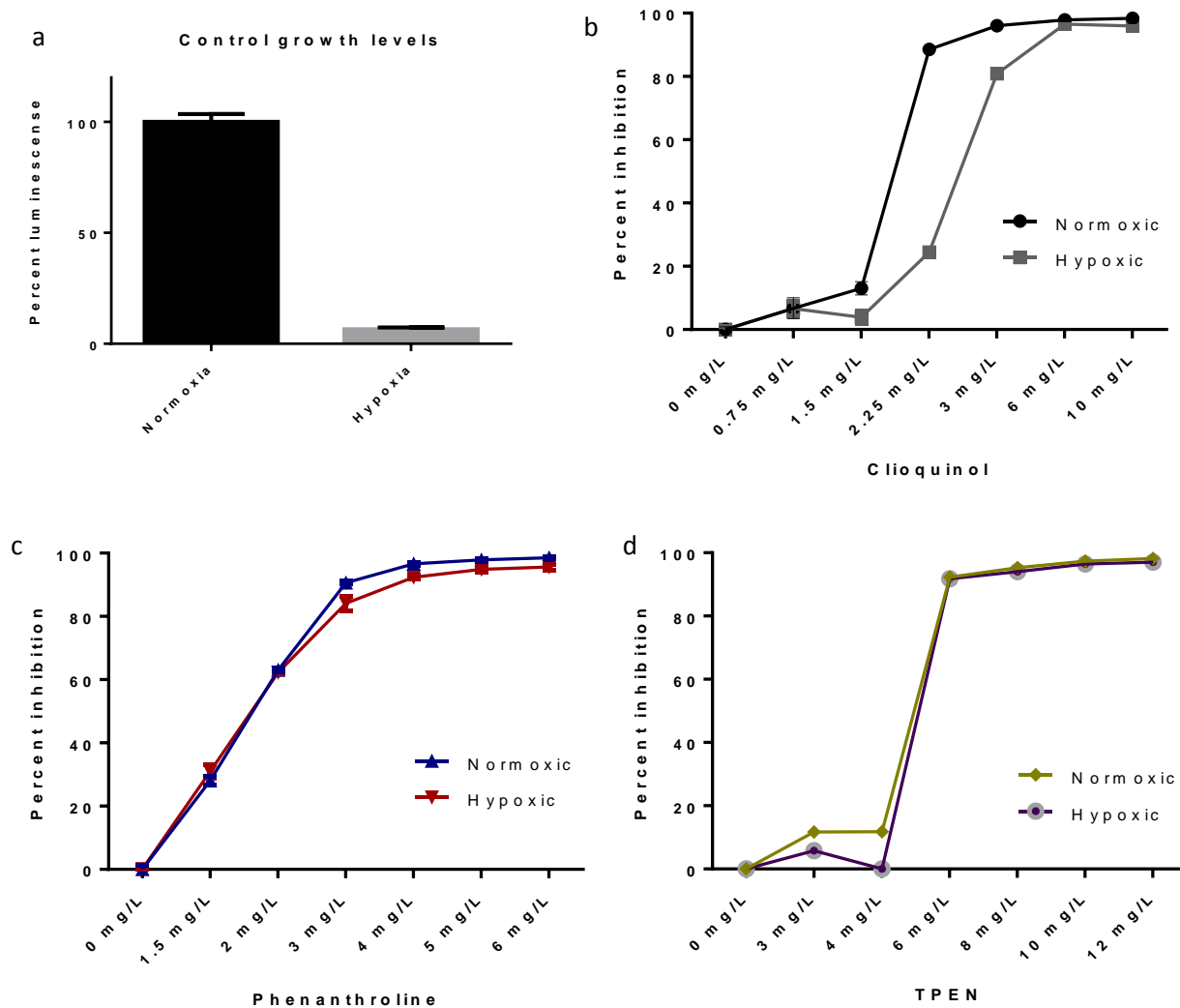


Fig. S1: (a) Comparison of *A. fumigatus* growth under normoxic and hypoxic conditions in the absence of inhibitors. Percent inhibition of *A. fumigatus* grown under normoxic and hypoxic conditions in the presence of different concentrations of (b) clioquinol, (c) phenanthroline and (d) TPEN. Cultures had a total incubation time of 15 h.

# Supplementary Figure 2

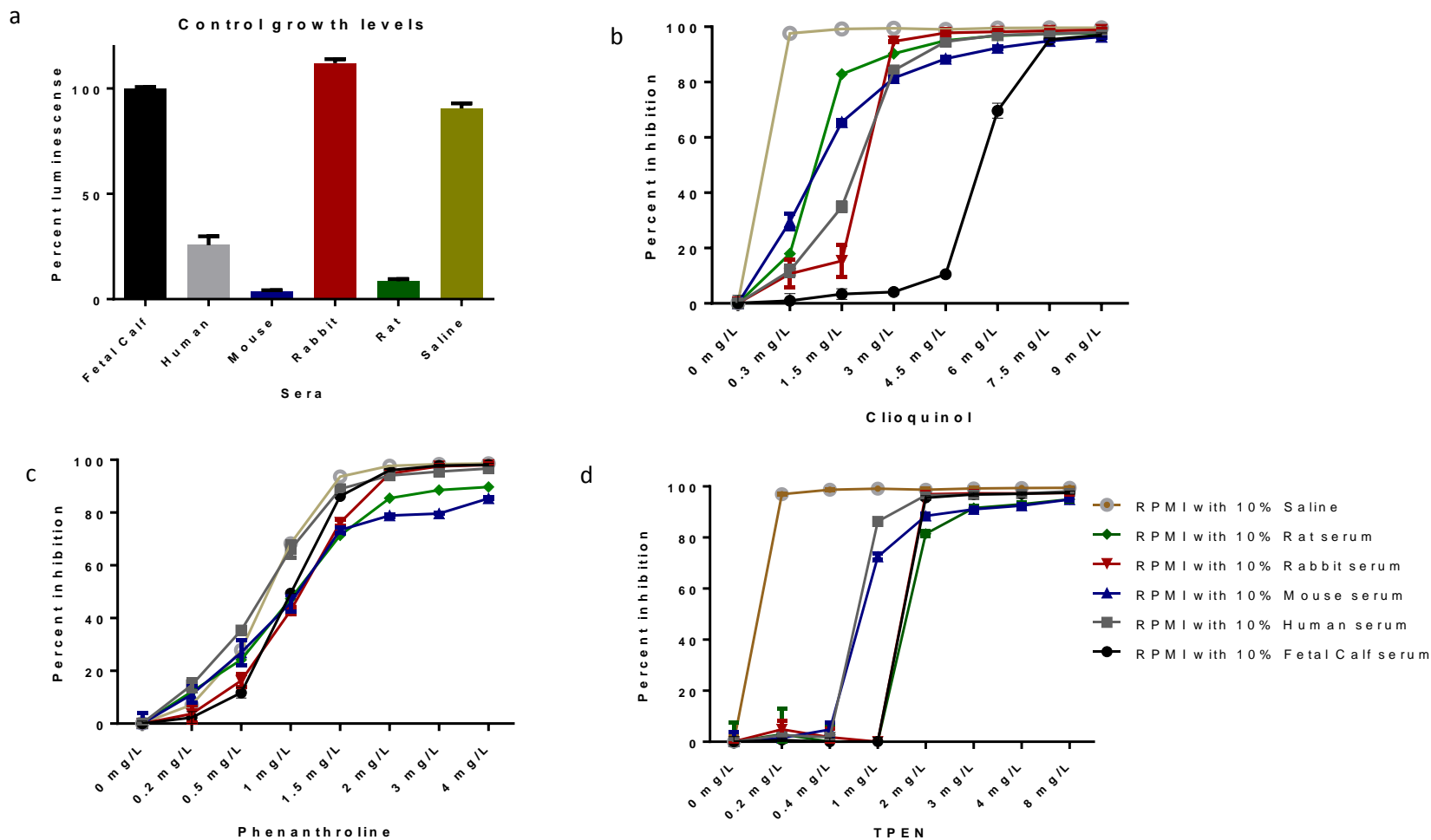


Fig. S2: (a) Comparison of *A. fumigatus* growth under five types of sera and saline in the absence of inhibitors. Percent inhibition of *A. fumigatus* grown in RPMI containing five types of sera and saline in the presence of different concentrations of (b) clioquinol, (c) phenanthroline and (d) TPEN. Cultures had a total incubation time of 15 h.

# Supplementary Figure 3

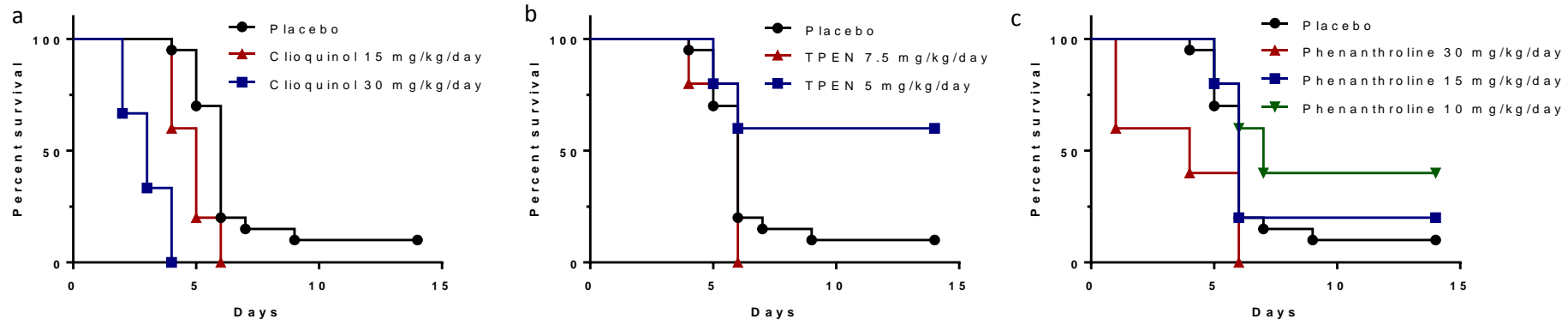


Fig. S3: Survival curves of (a) the 10% DMSO placebo group, the 30 mg/kg/day clioquinol treated group and the 15 mg/kg/day clioquinol treated group (b) the 10% DMSO placebo group, the 7.5 mg/kg/day TPEN treated group and the 5 mg/kg/day TPEN treated group (c) the 10% DMSO placebo group, the 30 mg/kg/day phenanthroline treated group, the 15 mg/kg/day phenanthroline treated group and the 10 mg/kg/day phenanthroline treated group.

## Supplementary Figure 4

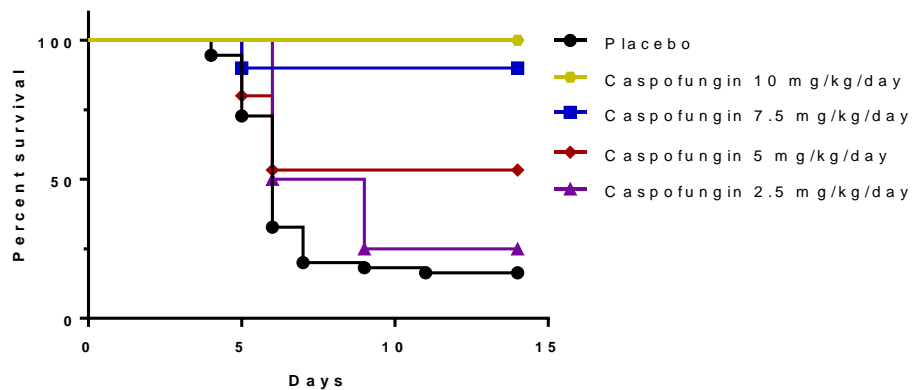


Fig. S4: Survival curves of the 10% DMSO placebo group, the 10 mg/kg/day caspofungin treated group ( $p < 0.0001$ ), the 7.5 mg/kg/day caspofungin treated group ( $p = 0.0003$ ), the 5 mg/kg/day caspofungin treated group ( $p = 0.0184$ ) and the 2.5 mg/kg/day caspofungin treated group ( $p = 0.3959$ ).