

## **Acta Neuropathologica**

### **Germline and somatic FGFR1 abnormalities in dysembryoplastic neuroepithelial tumors**

Barbara Rivera<sup>1,2</sup> · Tenzin Gayden<sup>2</sup> · Jian Carrot-Zhang<sup>2,3</sup> · Javad Nadaf<sup>2,3</sup> · Talia Boshari<sup>4</sup> · Damien Faury<sup>2</sup> · Michele Zeinieh<sup>2</sup> · Romeo Blanc<sup>5</sup> · David L. Burk<sup>6</sup> · Somayyeh Fahiminiya<sup>2,3</sup> · Eric Bareke<sup>2,3</sup> · Ulrich Schüller<sup>7</sup> · Camelia M. Monoranu,<sup>8</sup> Ronald Sträter<sup>9</sup> · Kornelius Kerl<sup>9</sup> · Thomas Niederstadt<sup>10</sup> · Gerhard Kurlemann<sup>11</sup> · Benjamin Ellezam<sup>12</sup> · Zuzanna Michalak<sup>13,14</sup> · Maria Thom<sup>13,14</sup> · Paul J. Lockhart<sup>15,16</sup> · Richard J. Leventer<sup>15,17,18</sup> · Milou Ohm<sup>19</sup> · Duncan MacGregor<sup>20</sup> · David Jones<sup>21,22</sup> · Jason Karamchandani<sup>23</sup> · Celia MT Greenwood<sup>2,24</sup> · Albert M. Berghuis<sup>6</sup> · Susanne Bens<sup>25</sup> · Reiner Siebert<sup>25</sup> · Magdalena Zakrzewska<sup>26</sup> · Pawel P. Liberski<sup>26</sup> · Krzysztof Zakrzewski<sup>27</sup> · Sanjay M. Sisodiya<sup>14,28</sup> · Werner Paulus<sup>29</sup> · Steffen Albrecht<sup>30</sup> · Martin Hasselblatt<sup>29</sup> · Nada Jabado<sup>2,31</sup> · William D Foulkes<sup>1,2,4,32</sup> · Jacek Majewski<sup>2,3</sup>

<sup>1</sup>Program in Cancer Genetics, Department of Oncology and Human Genetics, McGill University, Montreal, Quebec, Canada

<sup>2</sup>Department of Human Genetics, McGill University, Montreal, Quebec, Canada

<sup>3</sup>McGill University and Génome Québec Innovation Centre, Montreal, Quebec, Canada; <sup>4</sup>Department of Medical Genetics, Lady Davis Institute and Segal Cancer Centre, Jewish General Hospital, McGill University, Montreal, Quebec, Canada.

<sup>5</sup>Bloomfield Center for Research on Aging, Lady Davis Institute for Medical Research, McGill University, Jewish General Hospital, Montréal, Quebec, Canada

<sup>6</sup>Department of Biochemistry and Groupe de Recherche Axé sur la Structure des Protéines, McGill University, Montreal, Quebec, Canada

<sup>7</sup>Center for Neuropathology, Ludwig-Maximilians-University, Munich, Germany

<sup>8</sup>Department of Neuropathology, Institute of Pathology, University of Würzburg, Comprehensive Cancer Center Mainfranken, Würzburg, Germany

<sup>9</sup>Pediatric Hematology and Oncology, University Children's Hospital Münster, Münster, Germany

- <sup>10</sup>Department of Radiology, University Hospital Münster, Münster, Germany
- <sup>11</sup>Division of Pediatric Neurology, University Children's Hospital, Münster, Germany
- <sup>12</sup>Department of Pathology, CHU Sainte-Justine, Montreal, Canada
- <sup>13</sup>Division of Neuropathology, UCL Institute of Neurology, London, UK
- <sup>14</sup>Department of Clinical and Experimental Epilepsy, UCL Institute of Neurology, London, UK
- <sup>15</sup>Department of Pediatrics, The University of Melbourne, Melbourne, Australia
- <sup>16</sup>Bruce Lefroy Centre for Genetic Health Research, Murdoch Childrens Research Institute, Melbourne, Australia
- <sup>17</sup>Department of Neurology, The Royal Children's Hospital, Melbourne, Australia
- <sup>18</sup>Murdoch Childrens Research Institute, Melbourne, Australia
- <sup>19</sup>VUMC School of Medical Sciences, Amsterdam, The Netherlands
- <sup>20</sup>Department of Anatomical Pathology, Royal Children's Hospital, Melbourne, Australia; <sup>21</sup>German Cancer Consortium (DKTK), German Cancer Research Center (DKFZ), Heidelberg, Germany
- <sup>22</sup>Division of Pediatric Neurooncology (B062), German Cancer Research Center (DKFZ), Heidelberg, Germany
- <sup>23</sup>Department of Pathology, McGill University, Montreal Neurological Institute, Montreal, Quebec, Canada
- <sup>24</sup>Departments of Oncology and Epidemiology, Biostatistics & Occupational Health, McGill University, Montreal, Quebec, Canada
- <sup>25</sup>Institute of Human Genetics, Christian-Albrechts-University Kiel & University Hospital Schleswig-Holstein, Campus Kiel, Kiel, Germany
- <sup>26</sup>Department of Molecular Pathology and Neuropathology, Medical University of Lodz, Lodz, Poland
- <sup>27</sup>Department of Neurosurgery, Polish Mother's Memorial Hospital Research Institute, Lodz, Poland
- <sup>28</sup>Epilepsy Society, Bucks, UK
- <sup>29</sup>Institute of Neuropathology, University Hospital Münster, Münster, Germany
- <sup>30</sup>Department of Pathology, Montreal Children's Hospital, McGill University Health Centre, McGill University, Montreal, Quebec, Canada

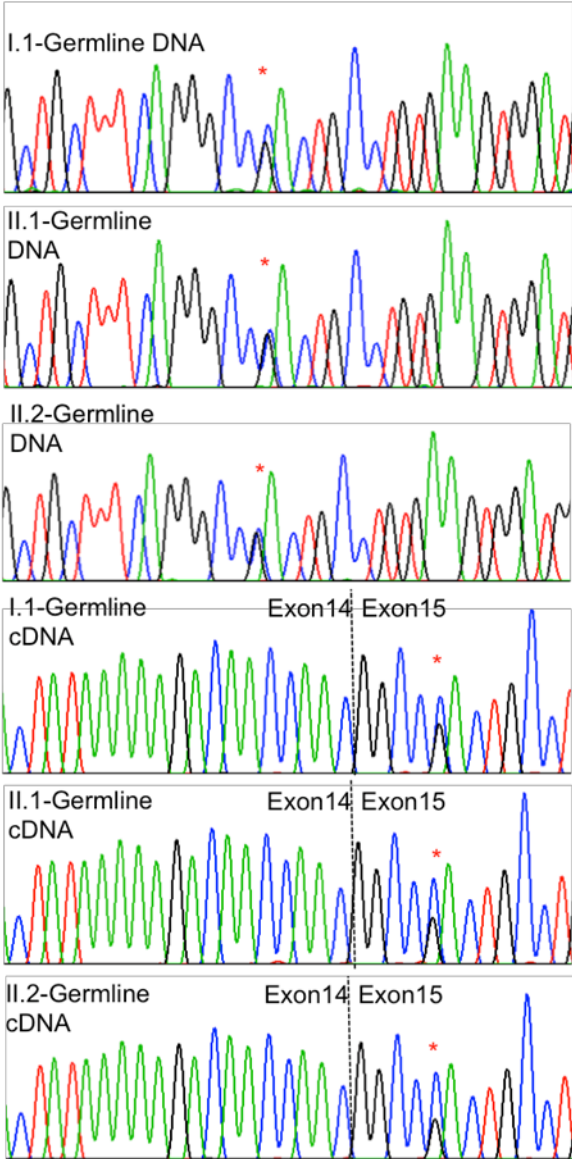
<sup>31</sup>Department of Pediatrics, Montreal Children's Hospital, McGill University Health Centre, Montreal, Quebec, Canada

<sup>32</sup>Department of Medical Genetics and Cancer Research Program, Research Institute McGill University Health Centre, Montreal, Quebec, Canada

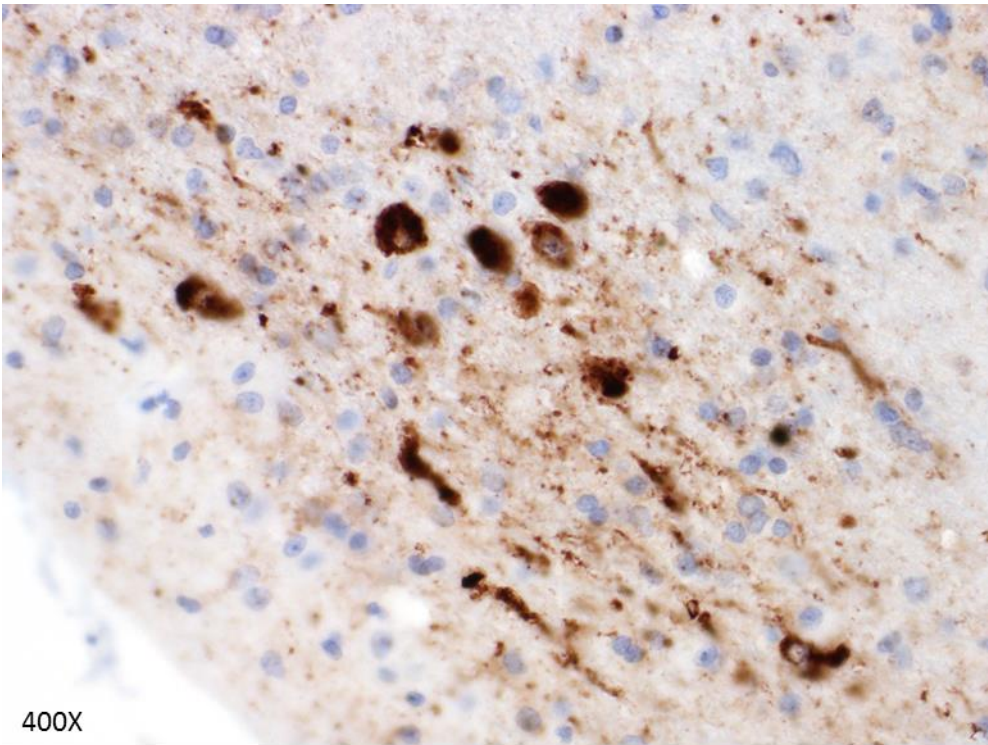
Correspondence to: Martin Hasselblatt, William D Foulkes or Jacek Majewski

[martin.hasselblatt@ukmuenster.de](mailto:martin.hasselblatt@ukmuenster.de), [william.foulkes@mcgill.ca](mailto:william.foulkes@mcgill.ca), [jacek.majewski@mcgill.ca](mailto:jacek.majewski@mcgill.ca)

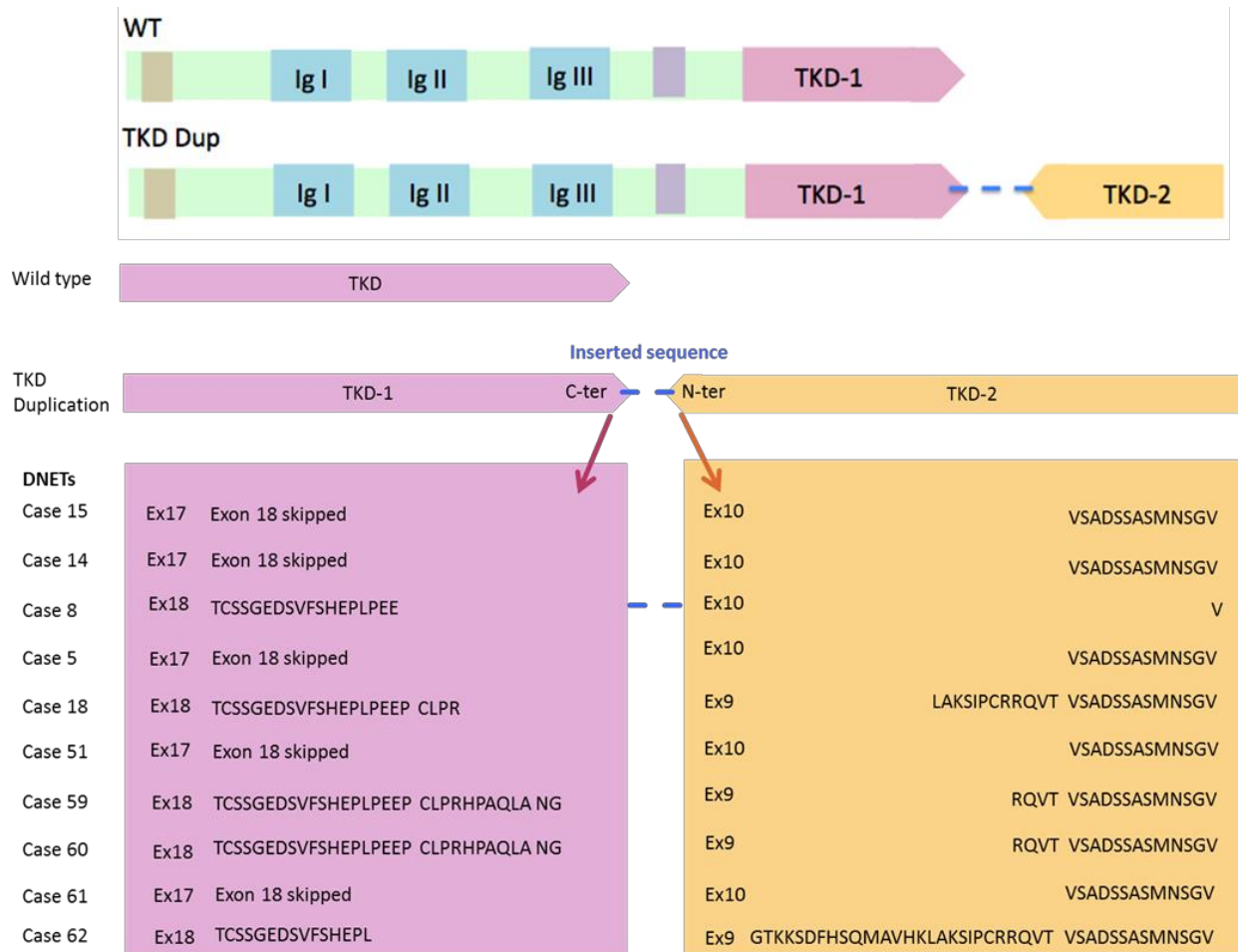
Suppl. Figure 1 Germline expression of p.R661P in lymphocytes



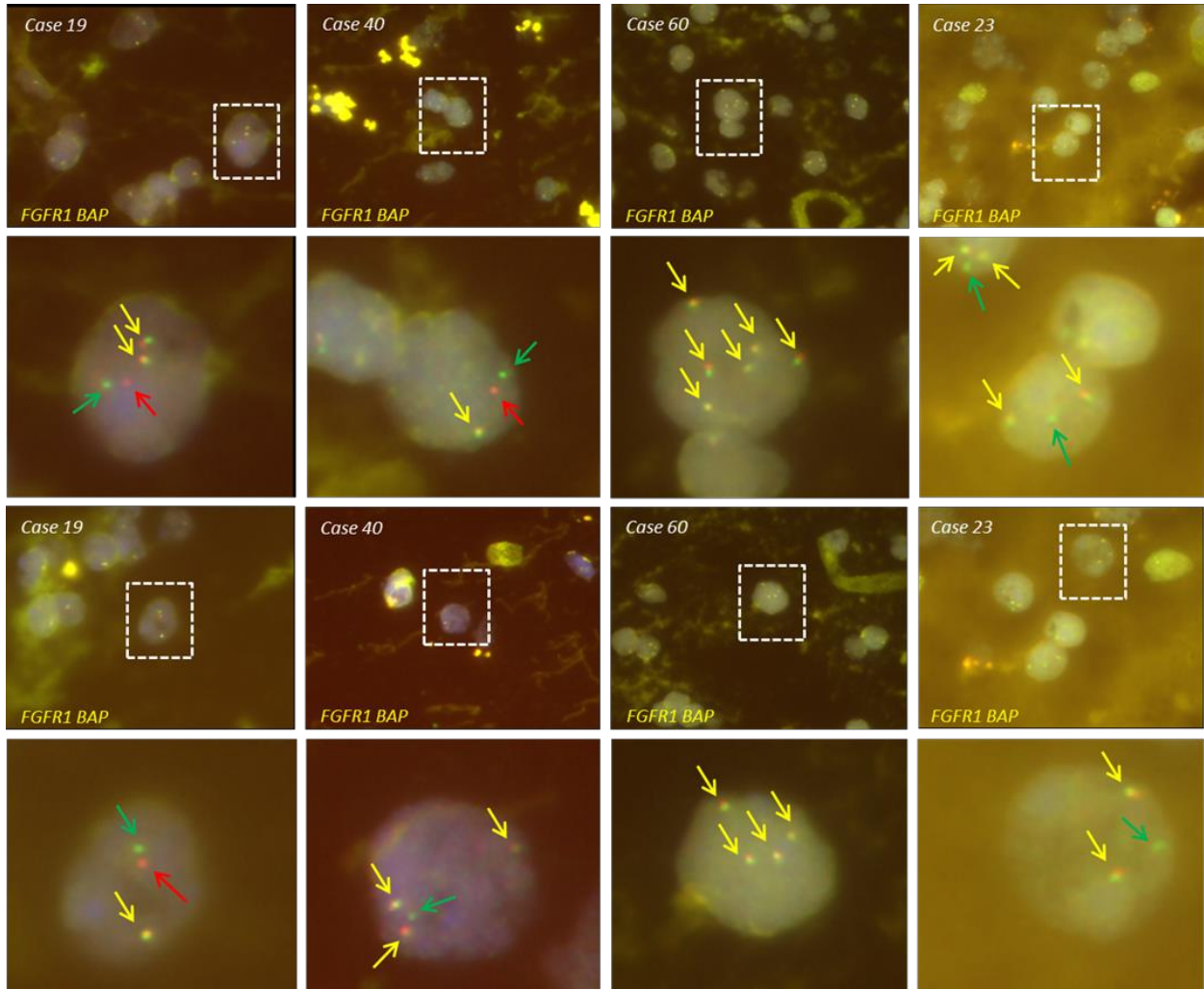
**Suppl. Figure 2 Validation of BRAF p.V600E by immunohistochemical staining**



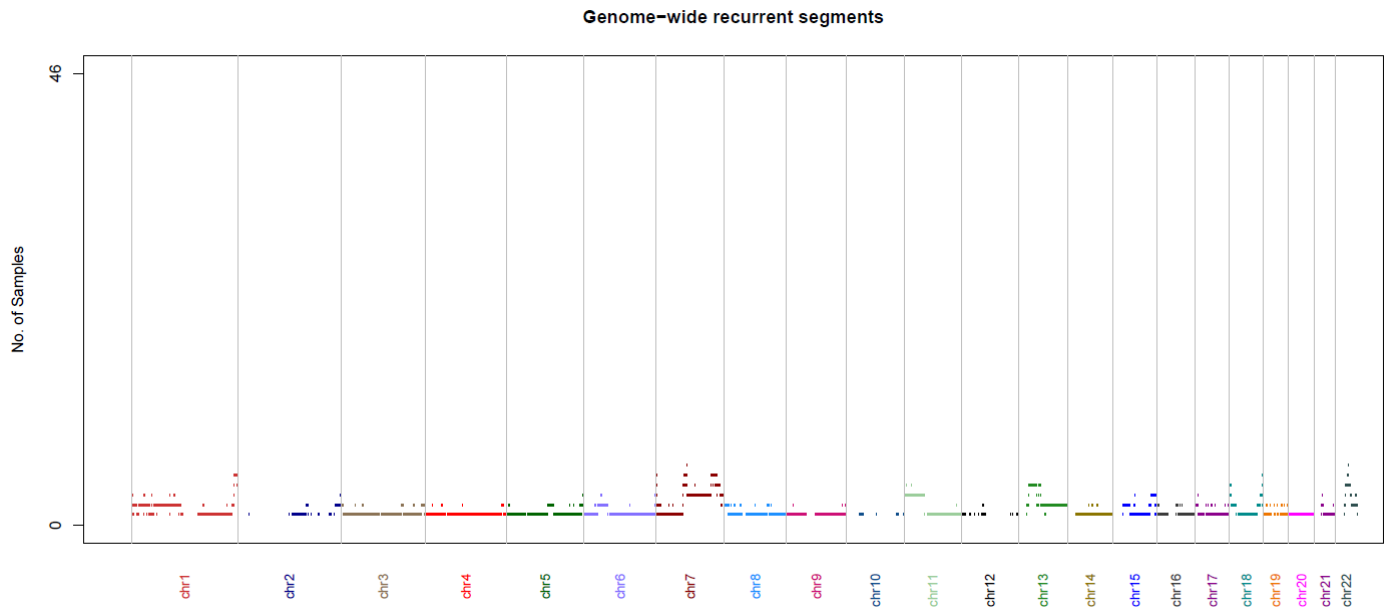
**Suppl. Figure 3 Tyrosine Kinase Domain duplications schema**



**Suppl. Figure 4 FISH results in 4 cases with either chromosomal breakpoints or gains of the *FGFR1* locus**

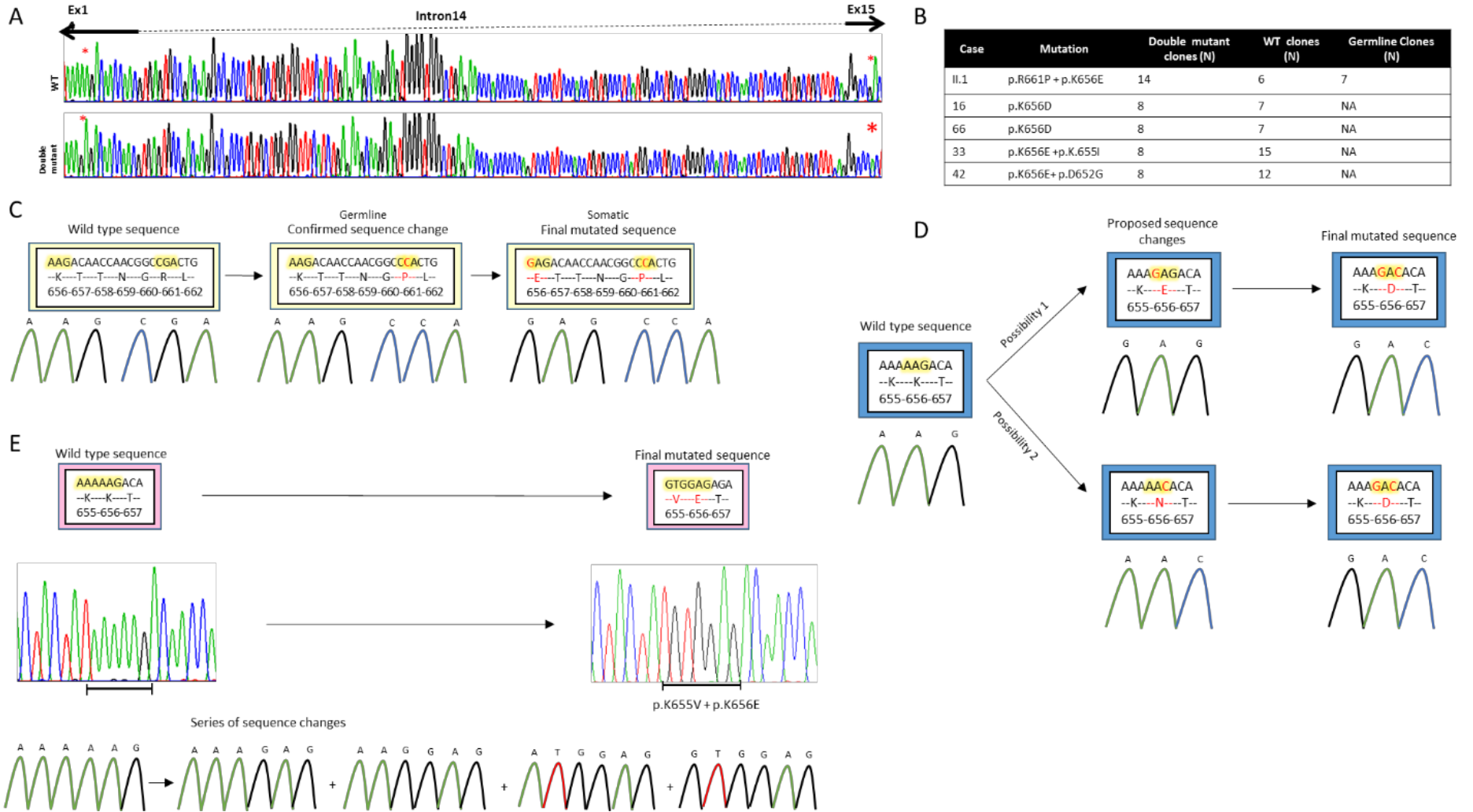


**Suppl. Figure 5 Chromosomal Number Variants plot resulting from the WES analyses**





Suppl. Figure 6 Description of mutants *in cis*



Suppl. Figure 7 Forward and side scatter plots of phospho-ERK measurement

