

Fig. S1.

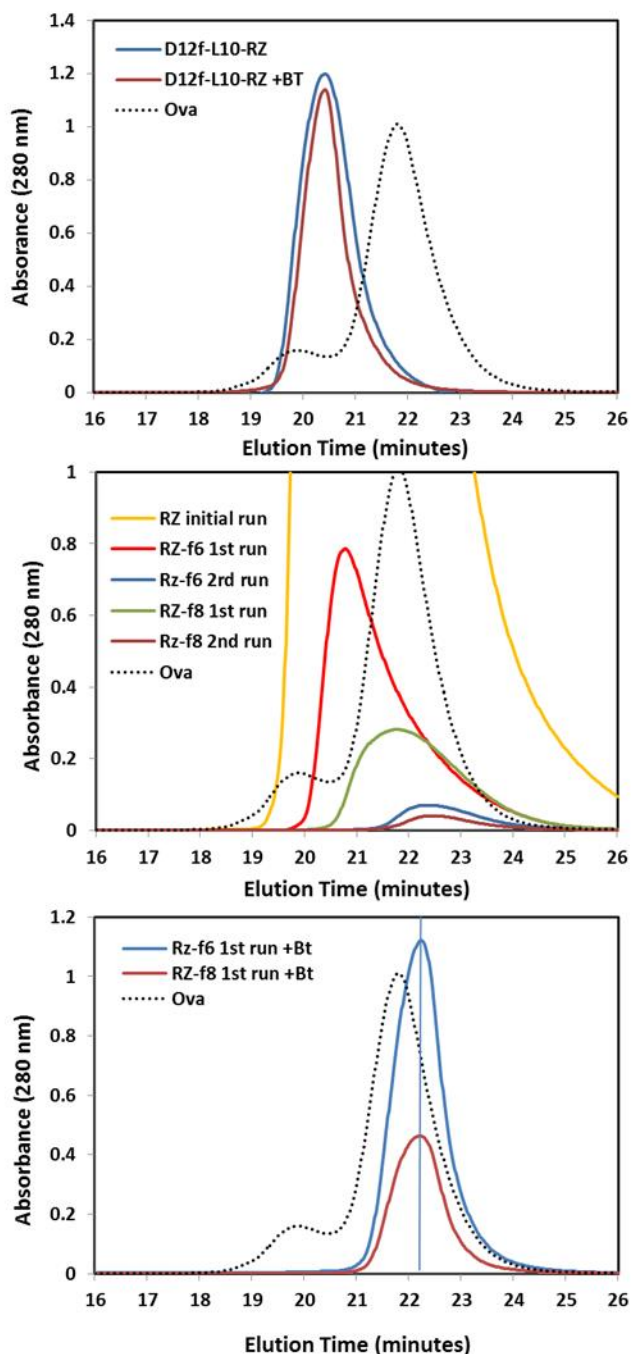


Fig. S1. Size exclusion elution profiles of protein +/- biotin. In all panels, ovalbumin (Ova, 45kDa) is shown for reference. A: Elution profile of D12f-L10-RZ with and without excess biotin added prior to the run. Both sample eluted as dimers. B: Elution profile of RZ. The initial purification (>10mg/mL) is shown off scale, then repurifications of portions of the initial RZ purification, either the leading edge (fraction 6, ~1.5 mg/mL) or the trailing edge (fraction 8, ~ 1.5 mg/mL) are shown. Then samples of those subsequent repurified fractions were run again. C: Fractions similar to those described in the panel above were repurified after being allowed to bind an excess of free biotin. The vertical blue line is to show the two samples had identical elution volumes

Fig. S2.

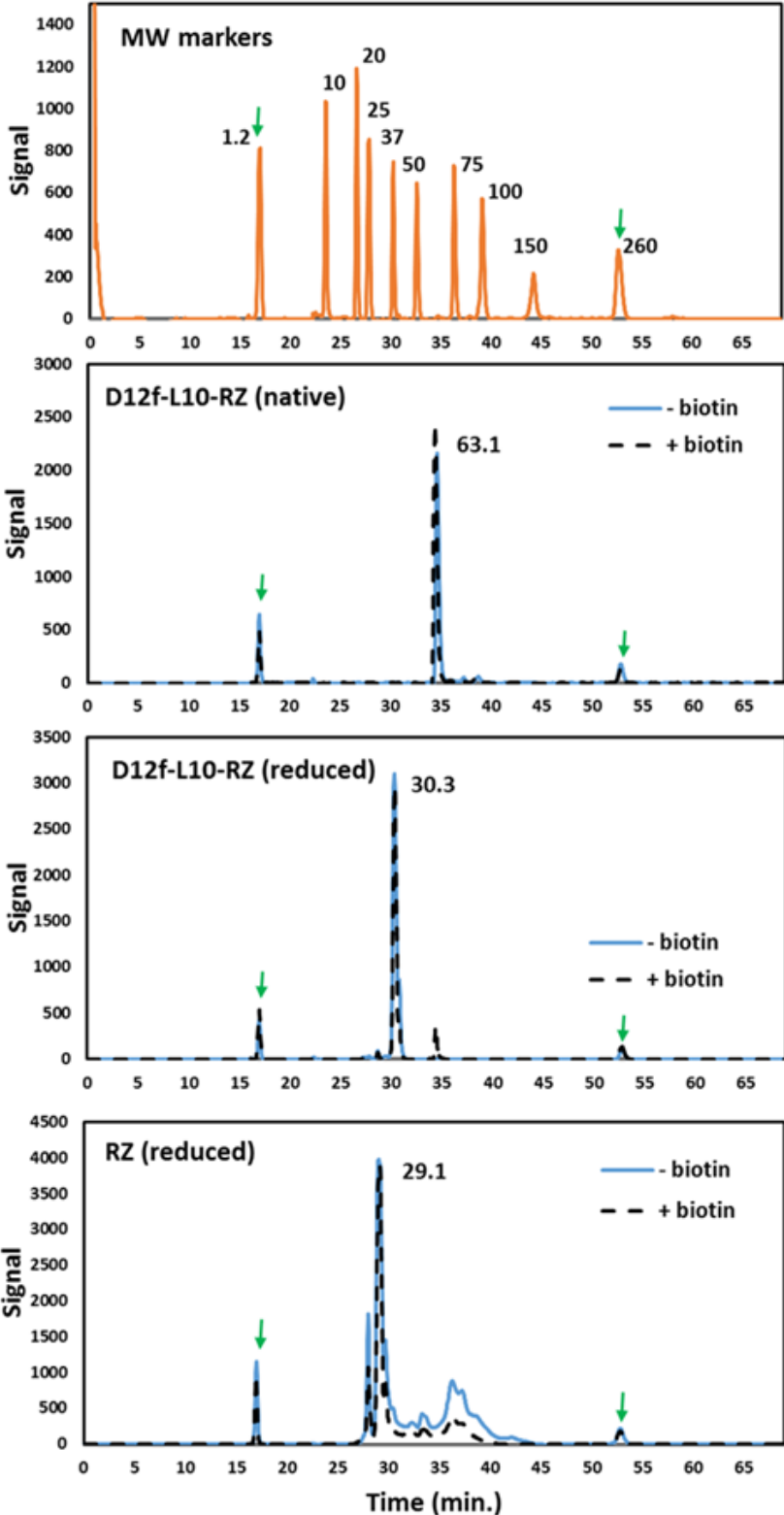


Fig. S2. Results of protein separations on Bio-Rad's Experion system. Protein samples were examined in either native or reduced conditions as indicated, both with and without added biotin (20  $\mu$ M). The top panel show the molecular weight (MW) markers.