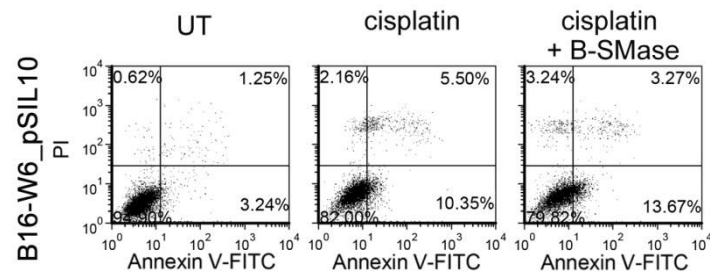
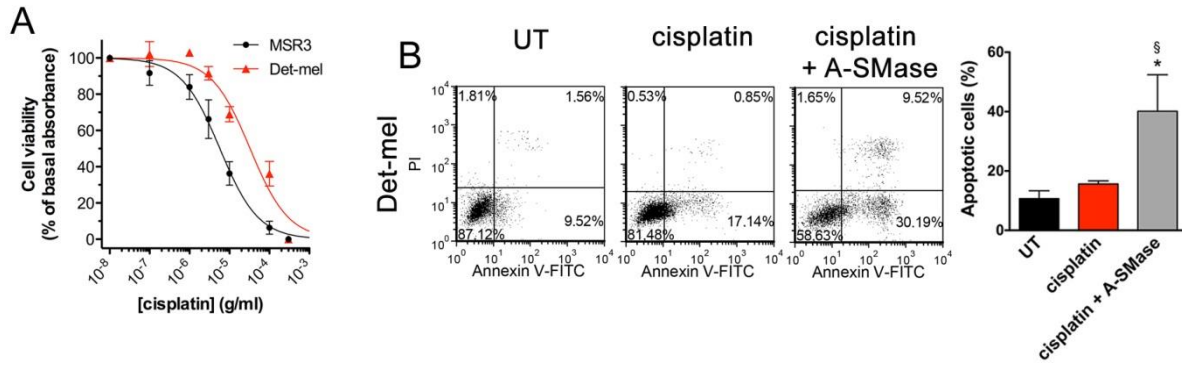


# Essential role for acid sphingomyelinase-inhibited autophagy in melanoma response to cisplatin

## Supplementary Material



**Supplementary Figure 1:** B1-W6\_pSIL10 were cultured for 16 h in the absence (UT: untreated) or in the presence of cisplatin (10  $\mu$ g/ml) and cisplatin + bacterial A-SMase (B-SMase; 0.3 units/ml). Representative dot plots of Annexin V-FITC/PI staining were shown. The images are representative of results obtained from three experiments.



**Supplementary Figure 2: A.** Dose-response curves of the effects of cisplatin on the viability of MSR3 and Det-mel cells, as measured by the MTT assay ( $n = 3$ ). **B.** Det-mel cells were cultured for 16 h in the absence (UT: untreated) or in the presence of cisplatin (10  $\mu\text{g}/\text{ml}$ ), both alone or in combination with human A-SMase (2.0 U/ml) ( $n = 4$ ). Left panels: representative dot plots of Annexin V-FITC/PI staining; Right panel: apoptosis quantification expressed as percentage of apoptotic cells (Annexin V<sup>+</sup>/PI<sup>-</sup> and Annexin V<sup>+</sup>/PI<sup>+</sup> cells). Statistical significance \* and §  $p < 0.05$  vs UT and cisplatin-treated cells, respectively.