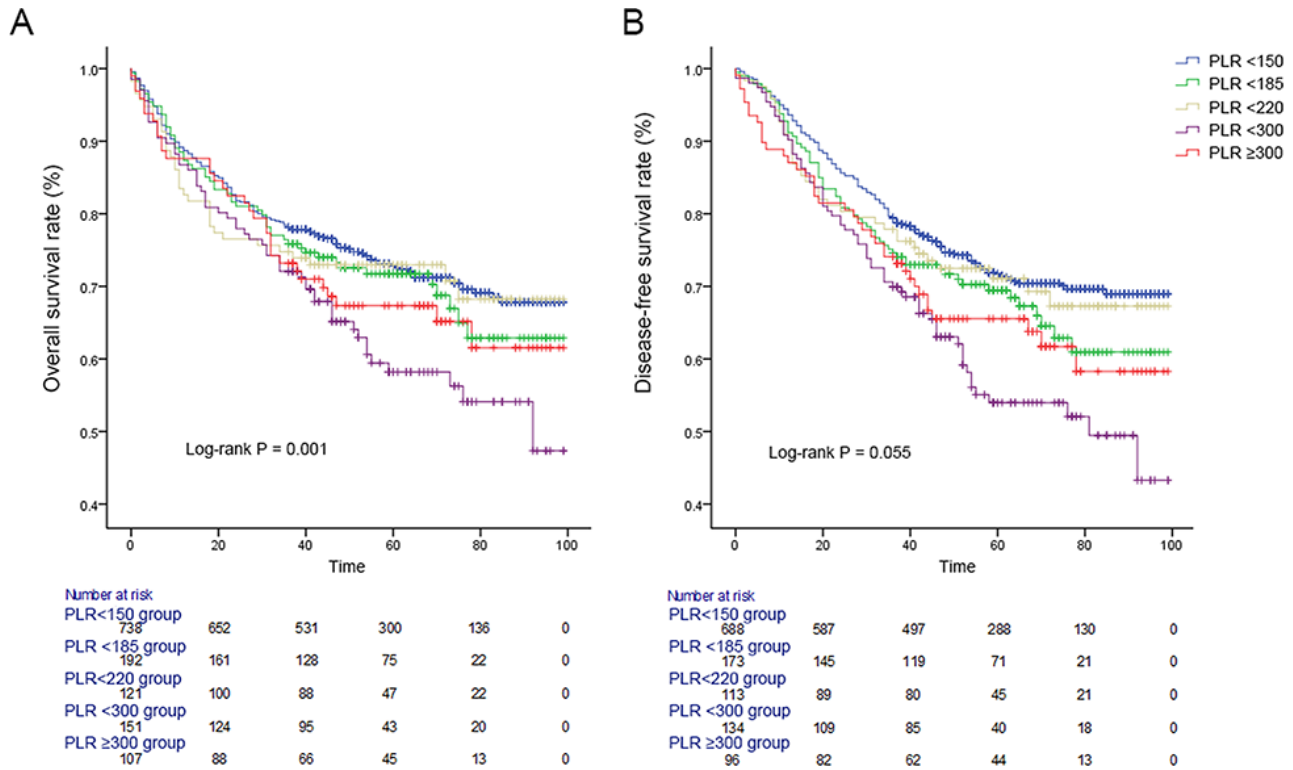


# Preoperative platelet to lymphocyte ratio is a valuable prognostic biomarker in patients with colorectal cancer

## Supplementary Materials



Supplementary Figure S1: Kaplan-Meier survival curves showing overall survival (A) and disease-free survival (B) stratified by quintiles of PLR in colorectal cancer patients (cut-off values 150, 185, 220, 300 respectively).