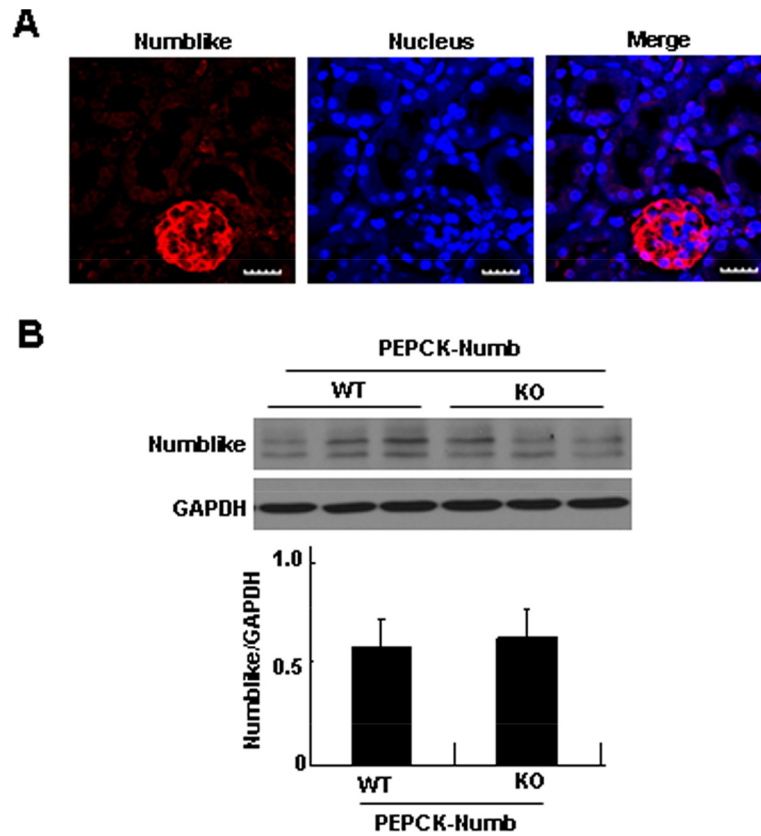
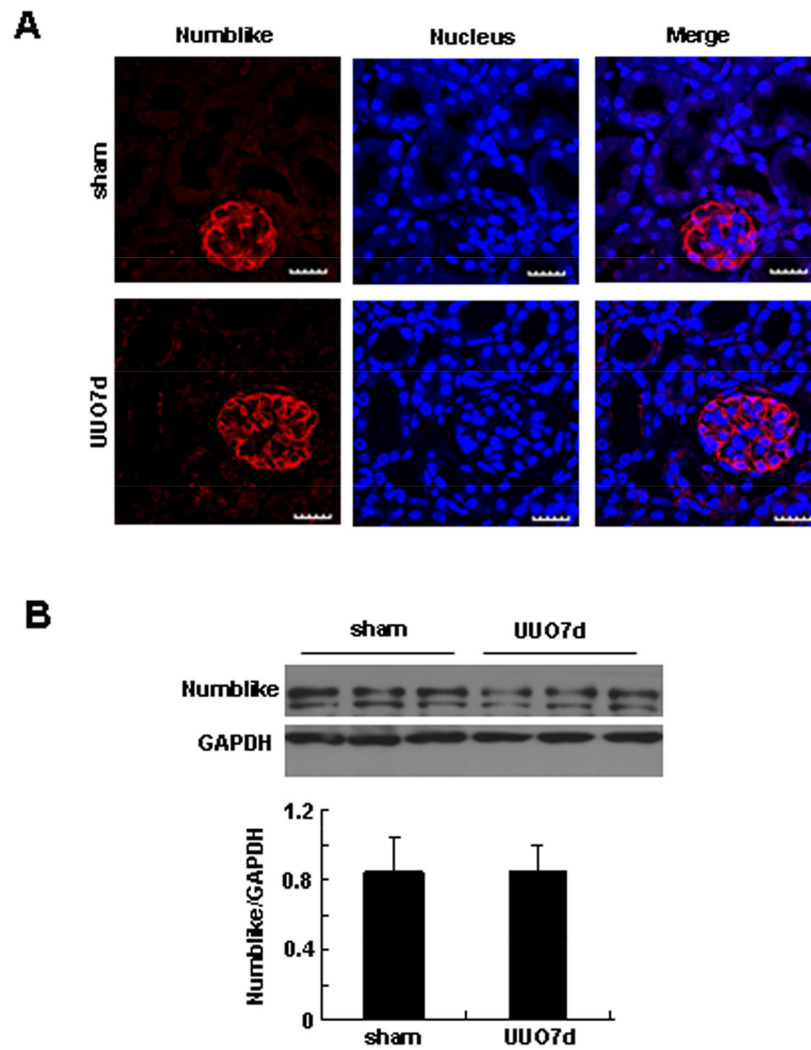


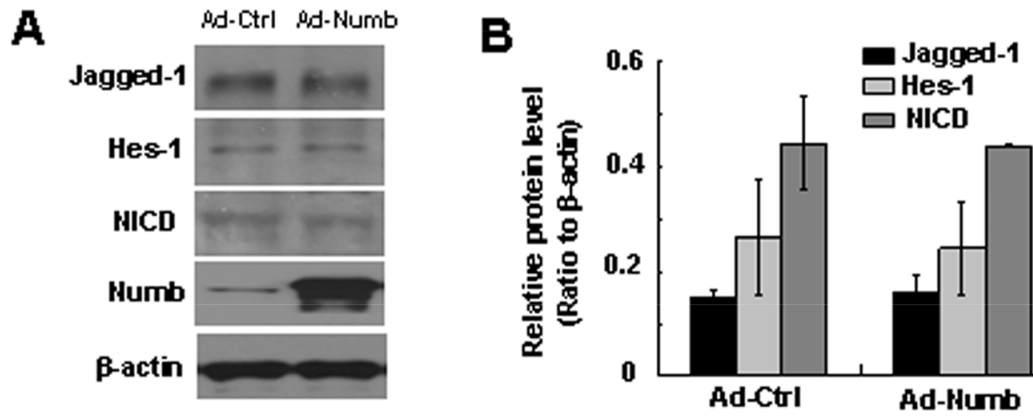
## SUPPLEMENTARY FIGURES



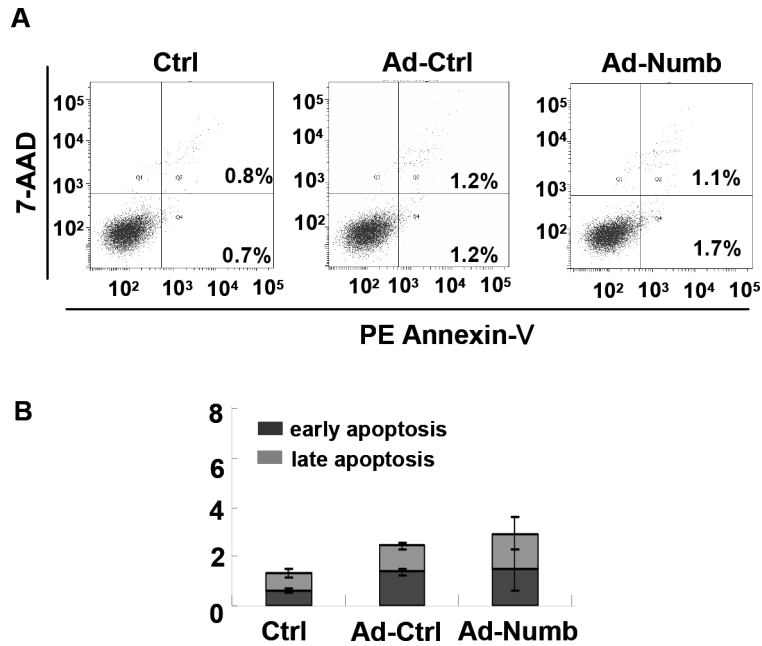
**Supplementary Figure S1: Expression and distribution of Numbllike in kidney.** A. Immunofluorescence staining by using anti-Numbllike antibody shows that Numbllike protein was mainly detected in the glomeruli in normal adult kidney of C57BL/6J mice at the age of 8-12 weeks. Bar=20 $\mu$ m. B. Representative western blots show the protein level of Numbllike in PEPCK-Numb-KO and wild type mice.



**Supplementary Figure S2: Expression and distribution of Numlike in kidney.** **A.** Immunofluorescence staining by using anti-Numlike antibody shows that the expression of Numlike did not change dramatically after UUO. Bar=20 $\mu$ m. **B.** Representative western blots show the protein levels of Numlike in fibrotic kidney at day 7 after UUO.



**Supplementary Figure S3: Overexpressing Numb did not change the expressions of Notch signaling components.**  
A. Representative western blots show that overexpressing Numb did not further decrease the expressions of Jagged-1, NICD and Hes-1.  
B. Graphic representation of relative protein levels of Jagged-1, NICD and Hes-1 to GAPDH. Data are expressed as mean $\pm$ SD of three independent experiments.



**Supplementary Figure S4: Overexpressing Numb did not cause obvious apoptosis in HK2 cells.** HK-2 cells were infected with Ad-Numb or Ad-Ctrl. Cell apoptosis was determined by flow cytometric analysis **A**. Quantitative analysis of cell apoptosis by flow cytometry **B**.