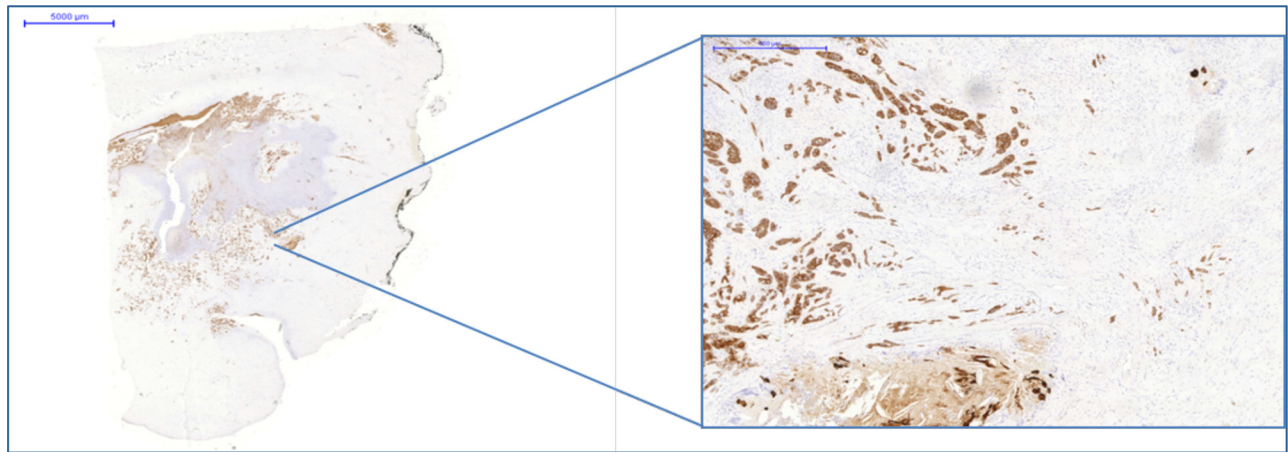
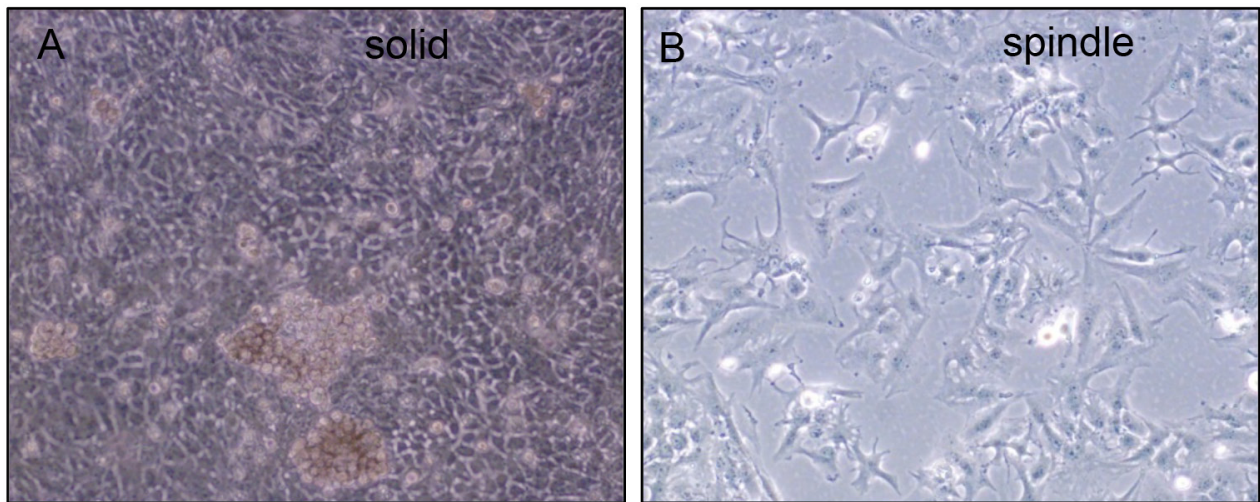


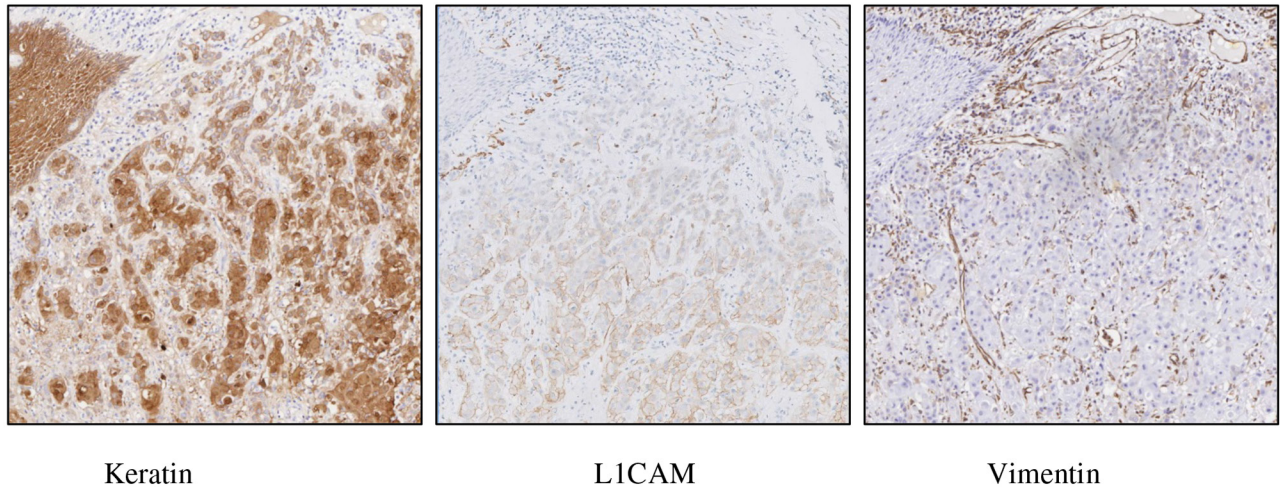
SUPPLEMENTARY FIGURES AND TABLES



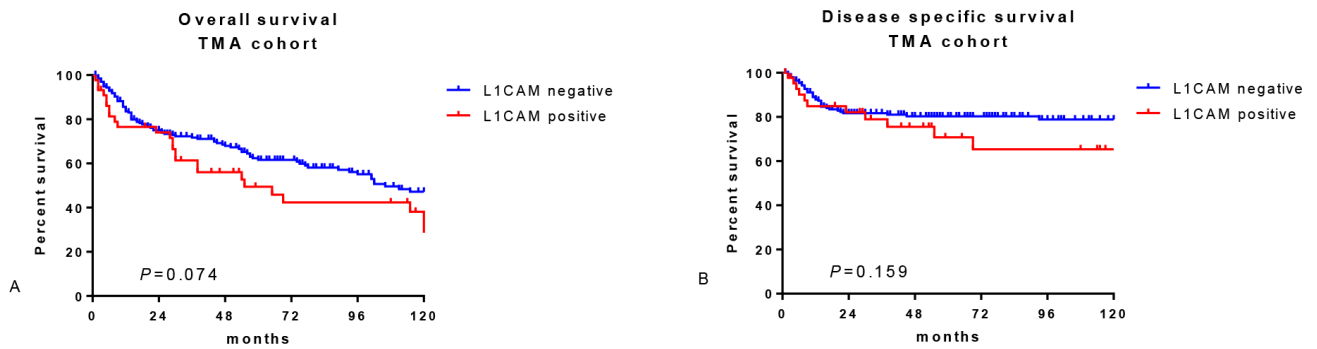
Supplementary Figure S1: Original tumour from which two cell line populations were isolated, stained for pancytokeratin showing both solid and spindle shaped tumour cells.



Supplementary Figure S2: Bright light microscopy images of the two cell populations consisting of cobble shaped cells from the 'solid' tumour **A**, and spindle shaped cells **B**.



Supplementary Figure S3: Vimentin and Keratin expression in the tumour border of a vulvar cancer.



Supplementary Figure S4: Overall and disease specific survival curves of the TMA cohort (N=245).

Supplementary Table S1: Multivariate cox regression analysis for the TMA cohort (n=245)

Disease specific survival		
variable	HR	95% CI
Lymph node metastasis	7.26	3.17 - 16.62
Tumour size (mm)	1.02	1.01 - 1.04
L1CAM staining	1.58	0.79 - 3.19
Overall survival		
variable	HR	95% CI
Lymph node metastasis	1.91	1.28 - 2.85
Tumour size (mm)	1.02	1.01 - 1.03
L1CAM staining	1.48	0.93 - 2.35

Supplementary Table S2: Patients characteristics of both the leiden and the TMA cohort together (n=348)

Characteristic	n=348		Value	
Follow up	- mo	(SD)	57.1	(47.1)
Age at diagnosis	- year	(SD)	71.1	(13.2)
FIGO stage	- n	(%)		
Stage 1			78	(22)
Stage 2			130	(37)
Stage 3			96	(28)
Stage 4			44	(13)
Lymph node metastases	- n	(%)	131	(38)
Extracapsular growth	- n	(%)	57	(16)
Tumor size	- mm	(SD)	32.9	(18.8)
Infiltration depth	- mm	(IQR)	7.0	(4.0 - 10.0)
Positive resection margins	- n	(%)	42	(12.1)
Disease status	- n	(%)		
Complete remission			234	(67)
Local recurrence			71	(20)
Regional recurrence			20	(6)
Distant recurrence			14	(4)
Died			176	(51)
Disease specific death			75	(22)
5-yr Overall survival	- %	(SD)	60.4	(2.8)
5-yr Disease specific survival	- %	(SD)	77.5	(2.4)
5-yr Disease free survival	- %	(SD)	68.7	(3.4)