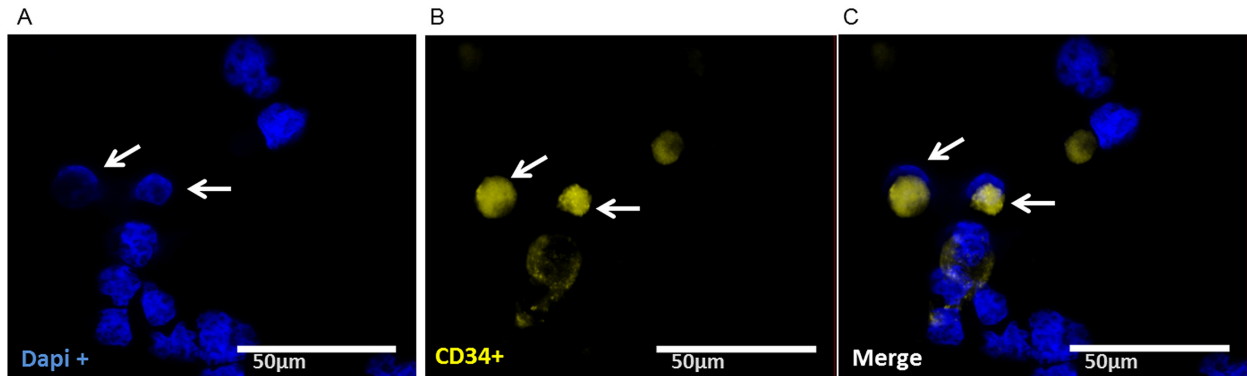
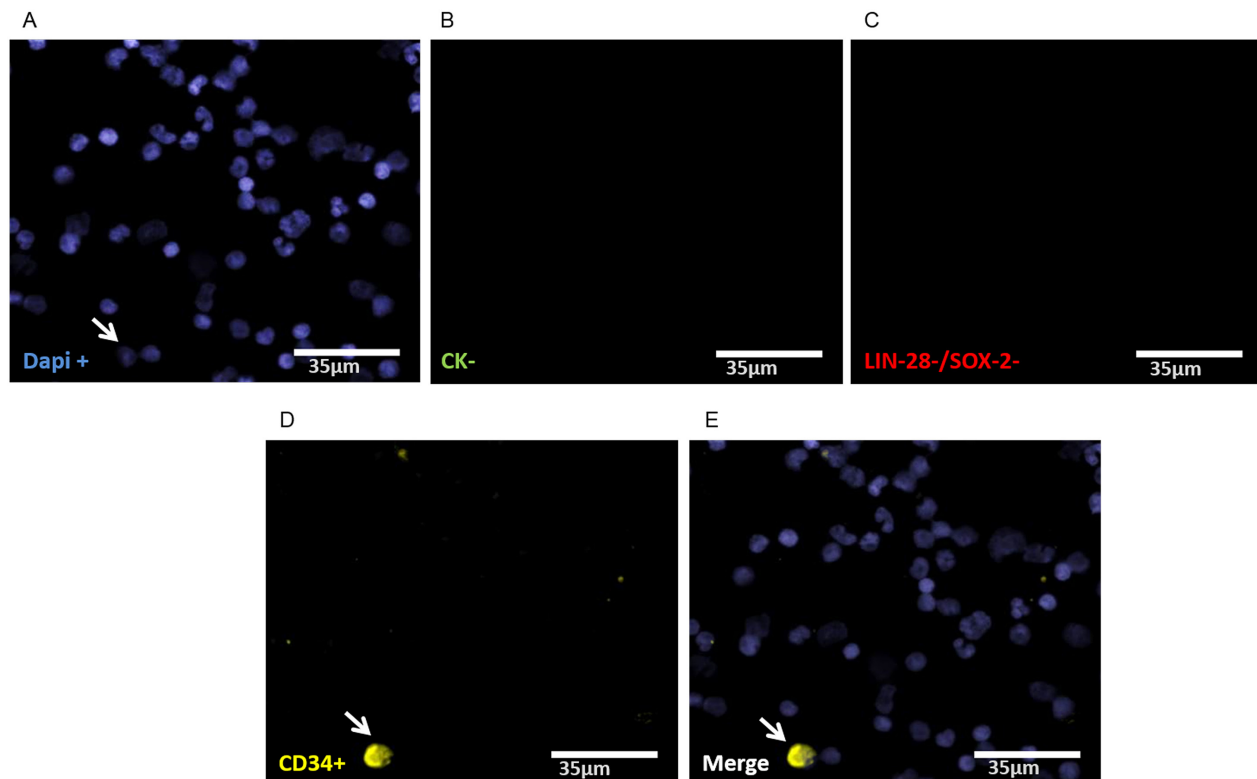


## Analysis of disseminated tumor cells before and after platinum based chemotherapy in primary ovarian cancer. Do stem cell like cells predict prognosis?

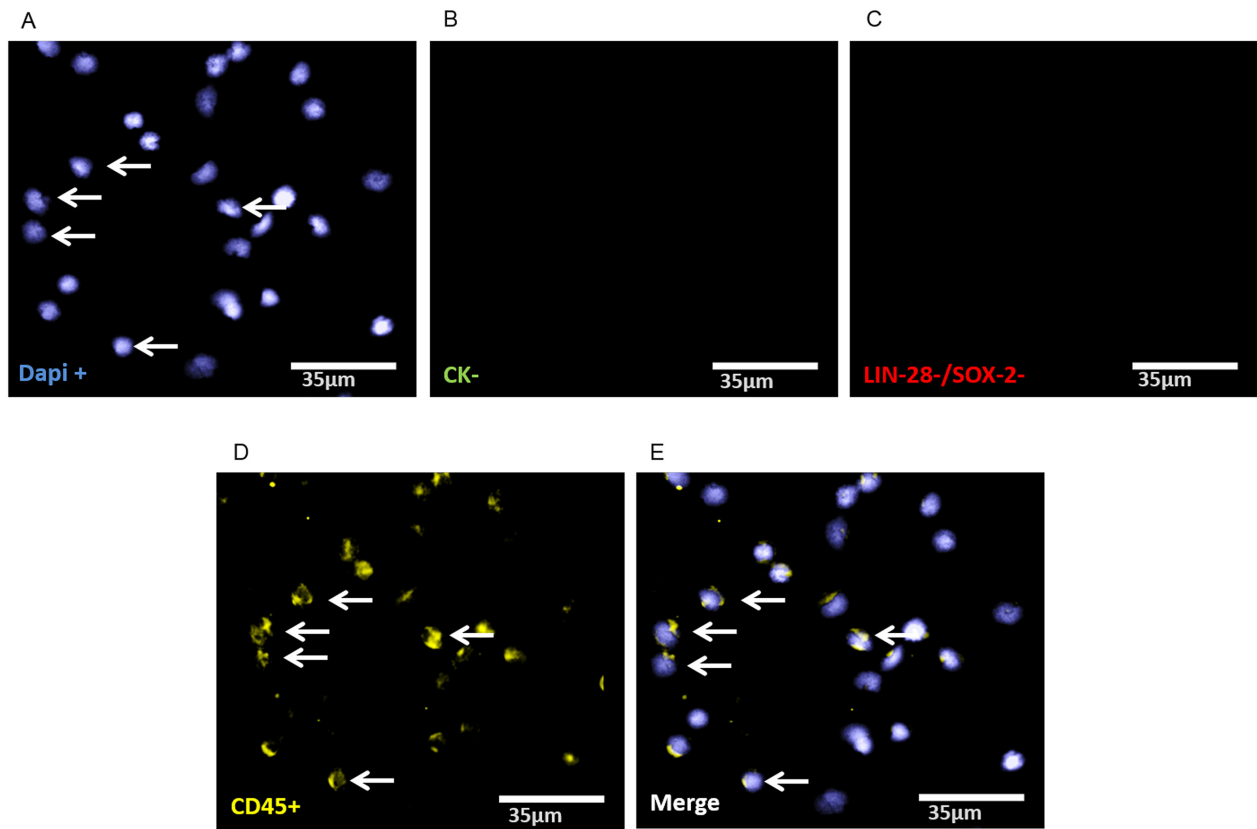
### Supplementary Materials



**Supplementary Figure S1: Representative staining of immunofluorescence staining of the kasumi-1 cell line used as positive control for the detection of hematopoietic stem cells (CD34<sub>pos</sub>).** (A) Cell nuclei were stained with Dapi. (B) The arrows show two CD34<sub>pos</sub> cells. (C) Indicates a merge of Dapi<sub>pos</sub> and CD34<sub>pos</sub> cells, magnification at 63 $\times$ .



**Supplementary Figure S2: Representative four-fold immunofluorescence staining for detection of hematopoietic stem cells (CD34<sub>pos</sub>) in the bone marrow of a healthy donor using primary and secondary antibody for LIN-28 and SOX-2.** (A) Cell nuclei were stained with Dapi. (B) Indicates CK<sub>neg</sub> cells. (C) Alludes a cell with LIN-28<sub>neg</sub>/SOX-2<sub>neg</sub> phenotype. (D) Shows CD34<sub>pos</sub> cell. (E) Indicates a merge of a hematopoietic stem cell with Dapi<sub>pos</sub>, CK<sub>neg</sub>, SOX-2<sub>neg</sub>/LIN-28<sub>neg</sub>, CD34<sub>pos</sub> phenotype, magnification at 40 $\times$ .



**Supplementary Figure S3: Representative four-fold immunofluorescence staining for detection of leukocytes ( $CD45_{pos}$ ) in the bone marrow of a healthy donor using primary and secondary antibody for LIN-28 and SOX-2. (A) Cell nuclei were stained with Dapi. (B) Indicates  $CK_{neg}$  cells. (C) Alludes a cell with  $LIN-28_{neg}/SOX-2_{neg}$  phenotype. (D) Shows a  $CD34_{pos}$  cell. (E) Indicates a merge of hematopoietic stem cells with  $Dapi_{pos}$ ,  $CK_{neg}$ ,  $SOX-2_{neg}/LIN-28_{neg}$ ,  $CD45_{pos}$  phenotype, magnification at 40 $\times$ .**

**Supplementary Table S1: Characteristics of patients analyzed for DTCs with stem cell character**

Total	10
Age	median 58 years, (30–77)
FIGO stage	
I–II	1 (10%)
III	6 (60%)
IV	3 (30%)
Nodal status	
N <sub>0</sub>	3 (30%)
N <sub>1</sub>	2 (20%)
N <sub>x</sub>	5 (50%)
Grading	
I–II	7 (70%)
III	3 (30%)
Residual tumor	
Macroscopic	
Complete resection	4 (40%)
Any residual tumor	6 (60%)
Histologic type	
Serous	8 (80%)
Other	2 (20%)
Survival	
PFS <sup>1</sup>	median 18 months, (4–72 months)
OS <sup>2</sup>	median 53 months, (13–101 months)
Alive	4 (40%)
Dead	6 (60%)
Recurrence	
No relapse	2 (20%)
Relapse	8 (80%)

<sup>1</sup>PFS: progression-free survival, <sup>2</sup>OS: overall survival.