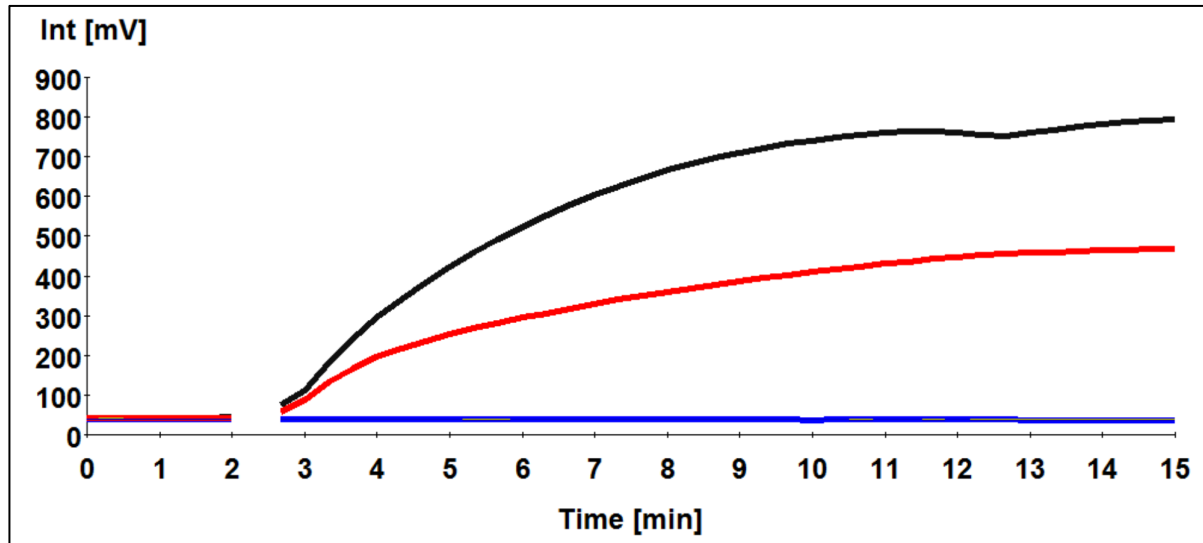
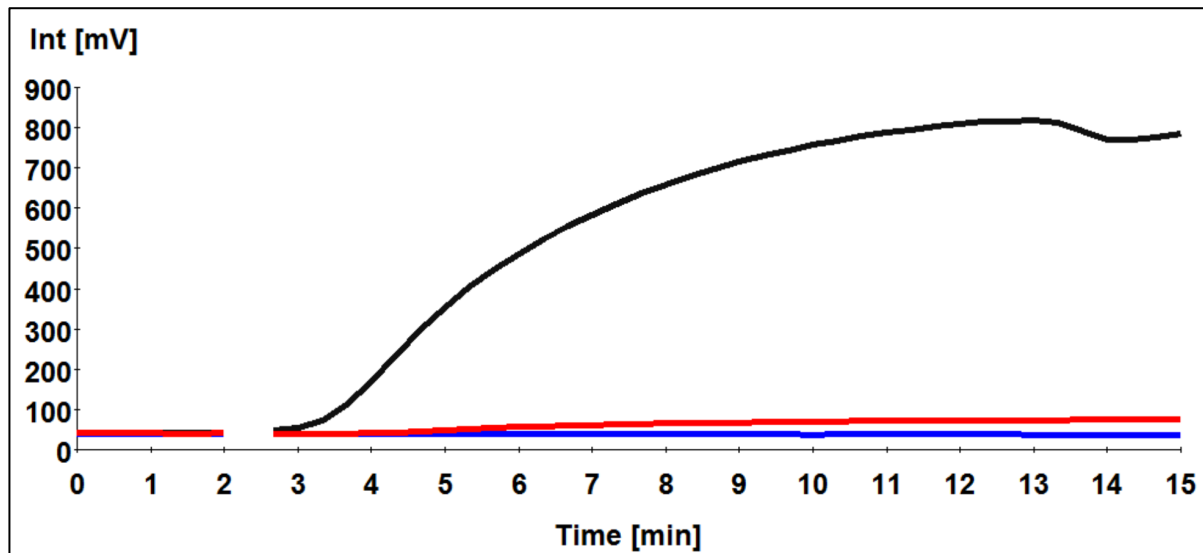


A



B



S2 Fig. Results of testing ChikV (black) and ONNV (Red) samples with RT-RPA assays with two primer pair combinations, A) RF+RR3 and (B) RF2+RR2. The RF+RR3 assay is more sensitive but is able to amplify the ONNV gene, while the RF+RR2 is less sensitive but did not detect the ONNV.