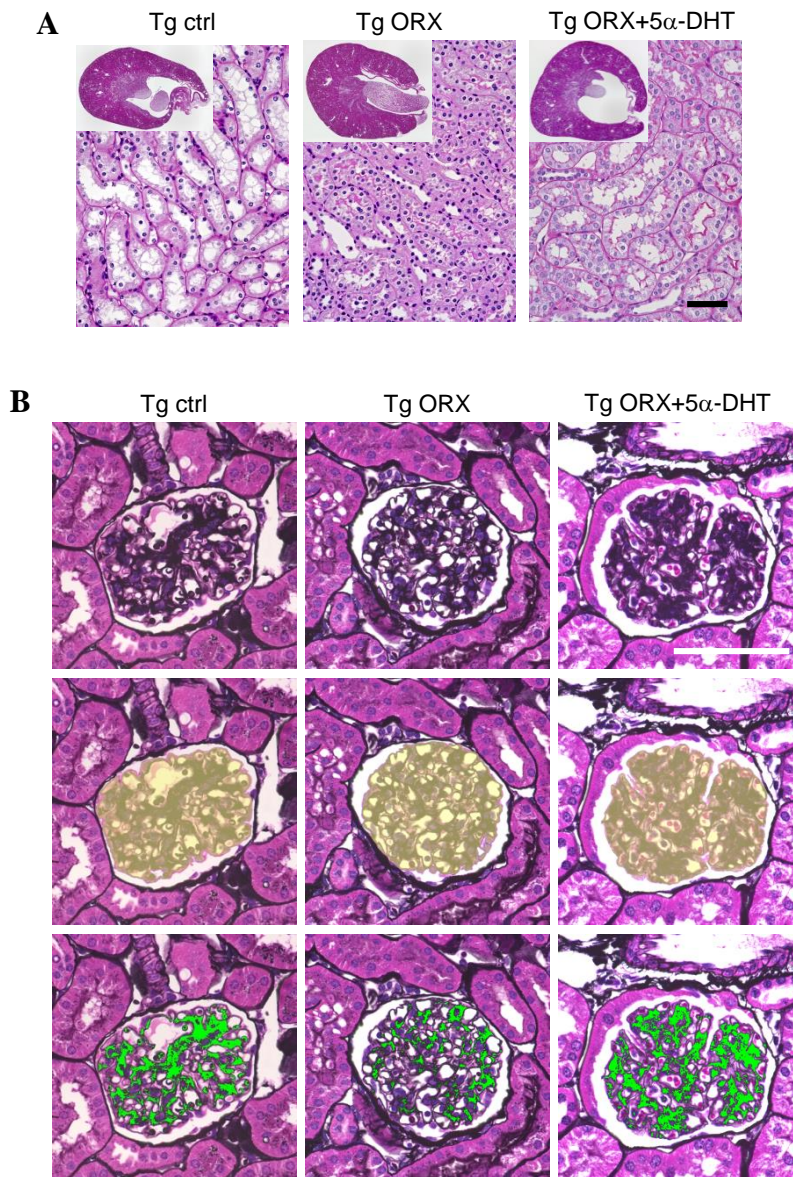


## Supplemental Figure 1.

Hyperglycemia and renal injury in Tg-ORX+5 $\alpha$ -DHT mice.



**Hyperglycemia and renal injury.** (A) Representative low power micrographs of kidneys (insets) and magnified view of the renal structure obtained from 50-55-week-old mice. Renal damage with expanded renal pelvis and tubules were maintained in the Tg ORX+DHT mice. Original magnification for insets, x40. (B) Upper, representative PASM stained glomerular; middle, the assessed glomerular surface area are expressed in yellow; lower, the same glomerular in which the PASM positive area are expressed in green. Scale bars, 50  $\mu$ m.