

1 **Supplementary Information**

2  
3 **Antidepressant indatraline induces autophagy and inhibits restenosis via**  
4 **suppression of mTOR/S6 kinase signaling pathway**  
5

6 Yoon Sun Cho<sup>1</sup>, Chih-na Yen<sup>1</sup>, Joong Sup Shim<sup>3</sup>, Dong Hoon Kang<sup>4</sup>, Sang Won Kang<sup>4</sup>, Jun O.  
7 Liu<sup>3</sup>, and Ho Jeong Kwon<sup>1,2\*</sup>  
8

9 <sup>1</sup>Chemical Genomics Global Research Laboratory, Department of Biotechnology, Translational  
10 Research Center for Protein Function Control, College of Life Science & Biotechnology,  
11 Yonsei University, Seoul 120-749, Republic of Korea

12 <sup>2</sup>Department of Internal Medicine, Yonsei University College of Medicine, Seoul 120-752,  
13 Republic of Korea.

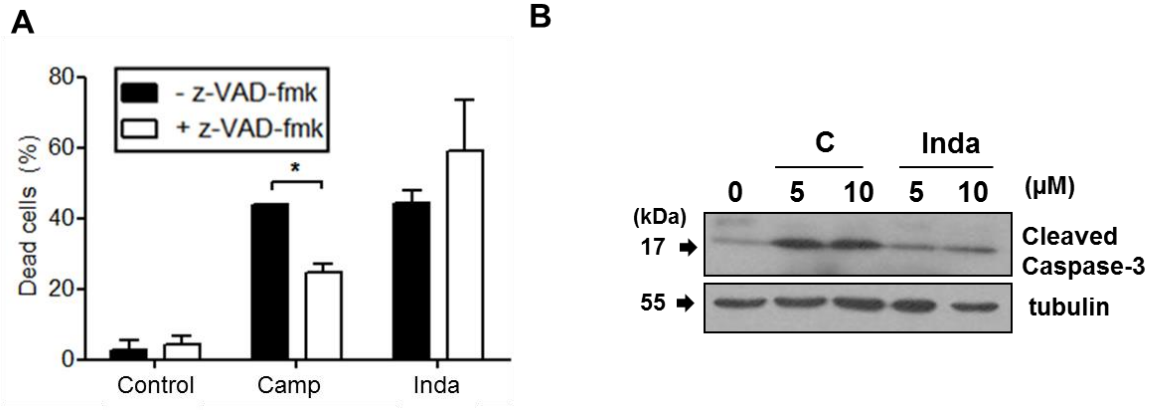
14 <sup>3</sup>Department of Pharmacology and Molecular Sciences, Johns Hopkins School of Medicine,  
15 725 N. Wolfe St, Baltimore, MD 21205

16 <sup>4</sup>Division of Life and Pharmaceutical Sciences, Ewha Womans University, Seoul 120-750,  
17 Republic of Korea  
18

19  
20  
21  
22  
23 \*Correspondence should be addressed to Ho Jeong Kwon, <sup>1</sup>Chemical Genomics Global  
24 Research Laboratory, Department of Biotechnology, Translational Research Center for Protein  
25 Function Control, College of Life Science & Biotechnology, Yonsei University, Seoul 120-749,  
26 Republic of Korea, Tel:82-2-2123-5883; Fax:82-2-362-7265; E-mail: [kwonhj@yonsei.ac.kr](mailto:kwonhj@yonsei.ac.kr)

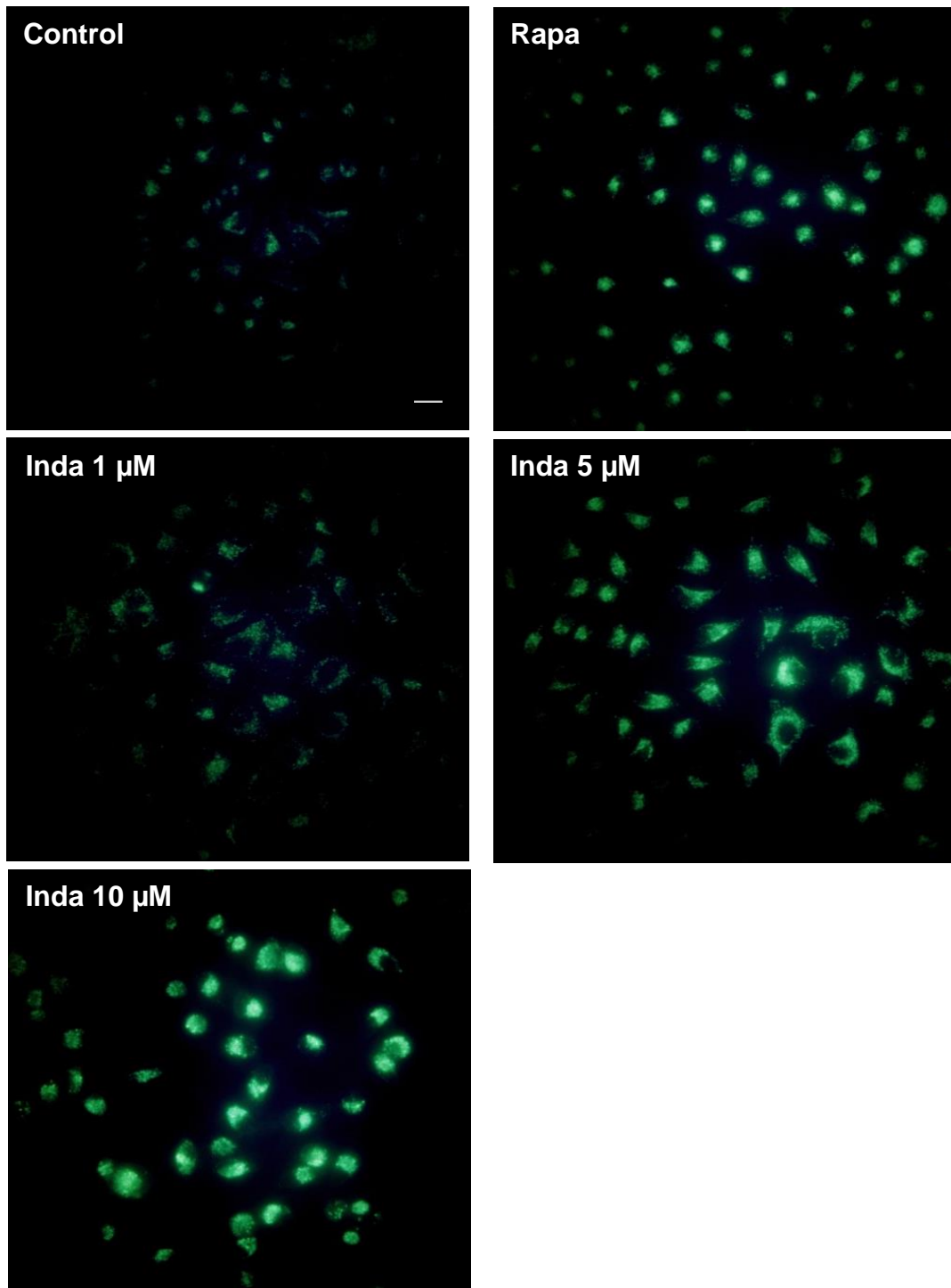
1  
2  
3  
4  
5  
6  
7  
8  
9  
10  
11

### Supplementary Figure 1



**Supplementary Figure 1.** Indatraline inhibits cell growth and induces apoptosis-independent cell death. (A) Effect of caspase inhibitor, z-VAD-fmk (10 μM) on indatraline-induced cell death (NT: control DMSO, Indatraline 10 μM, camptothecin 10 μM). (B) Cleaved caspase-3 levels in indatraline-treated cells (C: camptothecin, I: indatraline).

1 **Supplementary Figure 2**

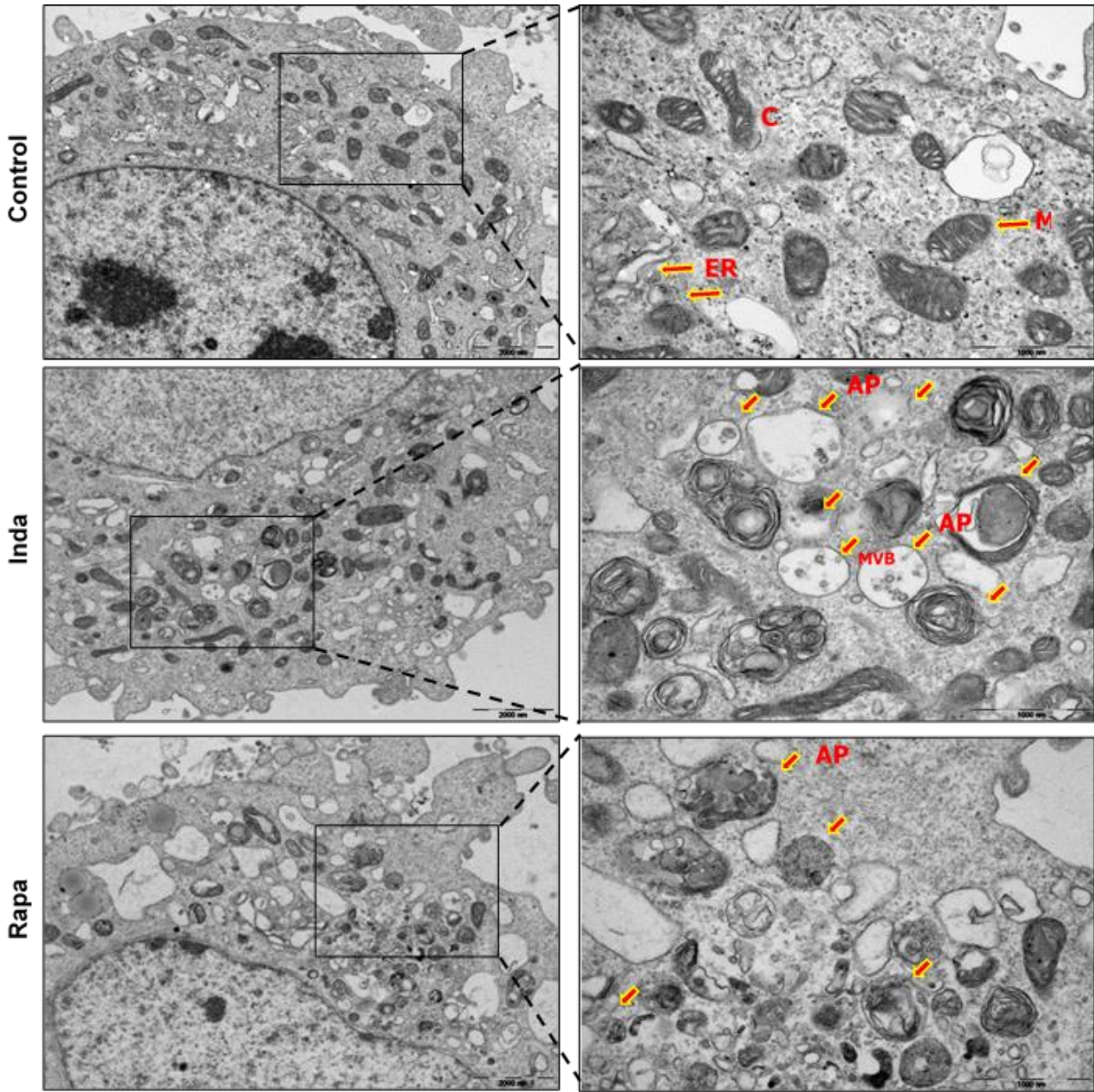


2

3 **Supplementary Figure 2.** Microscopy fluorescence images of MDC in Inda and rapamycin  
4 treated cells after 24 hr. Representative images from three independent experiments.

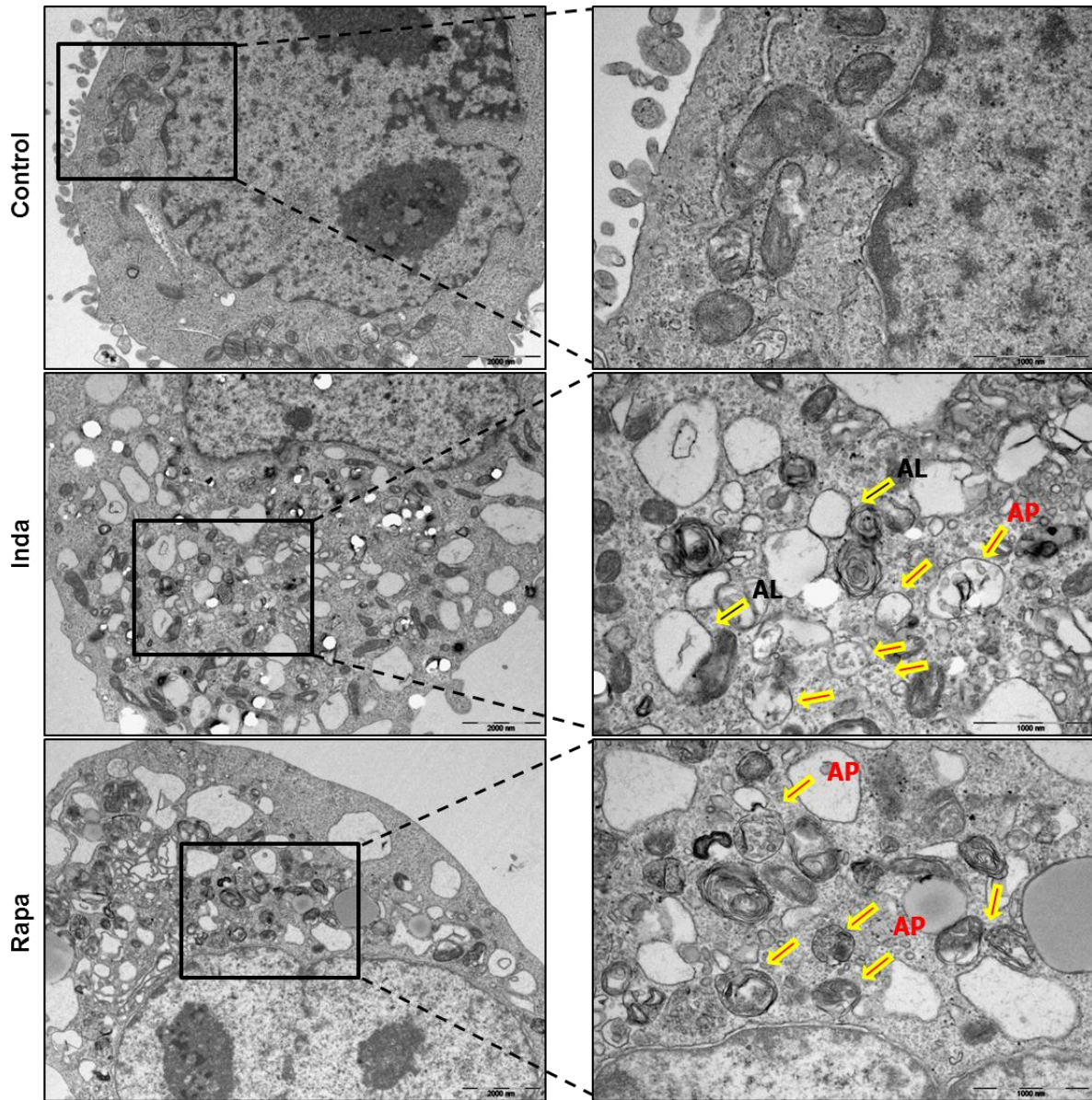
5

1 Supplementary Figure 3A



2

1 **Supplementary Figure 3B**

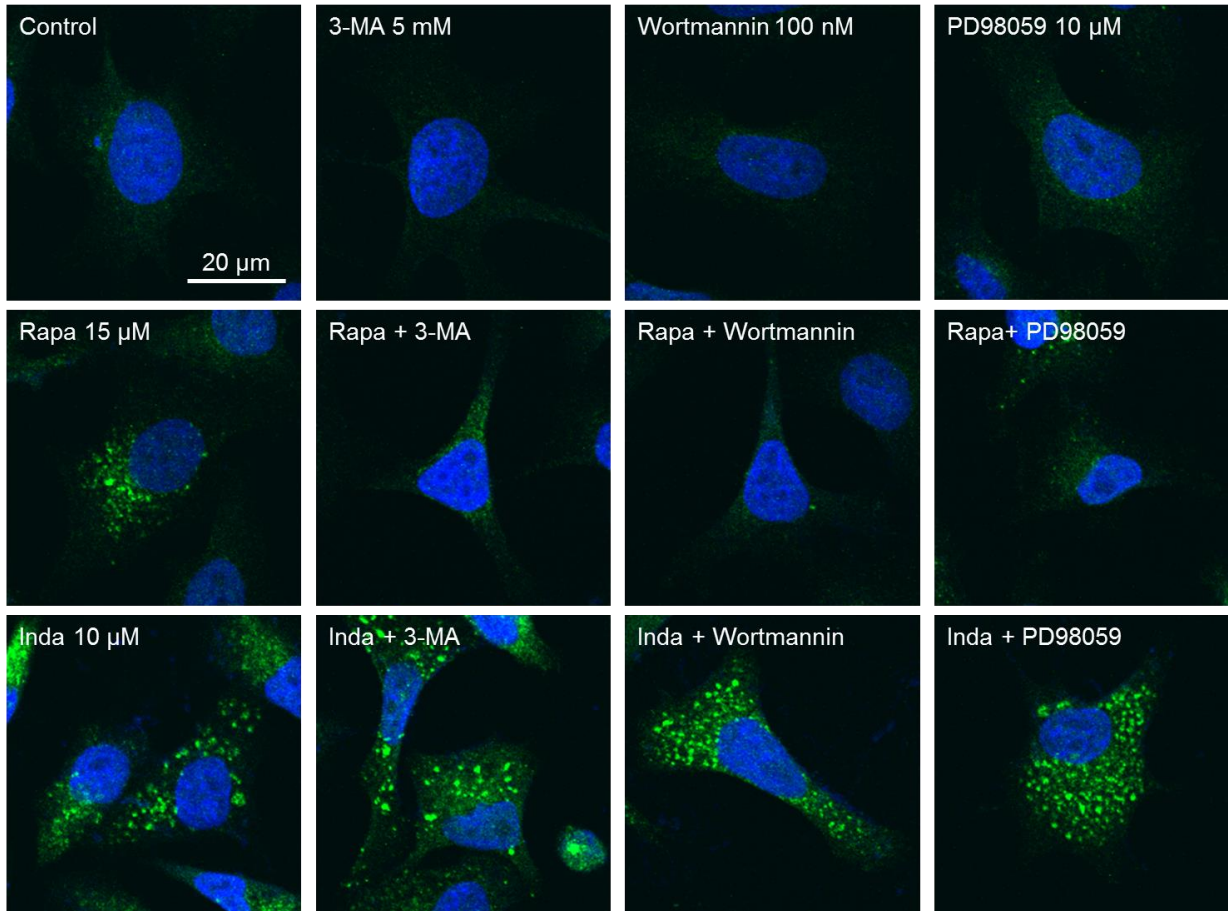


2

3 **Supplementary Figure 3.** TEM images of autophagic vacuoles after 12 hr (3A) and 24 hr (3B)  
4 of drug treatment in HeLa cells. The arrows labeled represent the following: AL:  
5 autophagolysosome, AP: autophagosome, MVB: multi-vesicular bodies, M: mitochondria, C:  
6 cytosol, and ER: endoplasmic reticulum. Scale bars represent 2000 nm and 10000nm.

7

1 **Supplementary figure 4**



2

3

4 **Supplementary figure 4.** Immunoblotting of LC3 in drug treated HeLa cells after 24 hr.  
5 3MA, Wortmannin, PD98059 were treated 1 hr before indatraline or rapamycin treatment.

6

7

8