

1
2
3
4
5
6
7
8
9
10
11
12
13
14
15
16
17
18
19

Supplementary Material

Transport of cerium oxide nanoparticles in saturated silica media: influences of operational parameters and aqueous chemical conditions

Zhaohan Zhang^{a,b1}, Peng Gao^{a1}, Ye Qiu^a, Guohong Liu^a, Yujie Feng^{a*}, Mark Wiesner^{b**}

- a. State Key Laboratory of Urban Water Resource and Environment, Harbin Institute of Technology, No73, Huanghe Road, Nangang District, Harbin 150090, China
- b. Center for the Environmental Implications of Nano Technology, Duke University, Durham, North Carolina 27708, United States

* Corresponding authors: yujief@hit.edu.cn (Y.J. Feng); wiesner@duke.edu (Mark Wiesner)

Number of pages: 4

Number of figures: 2

Number of tables: 0

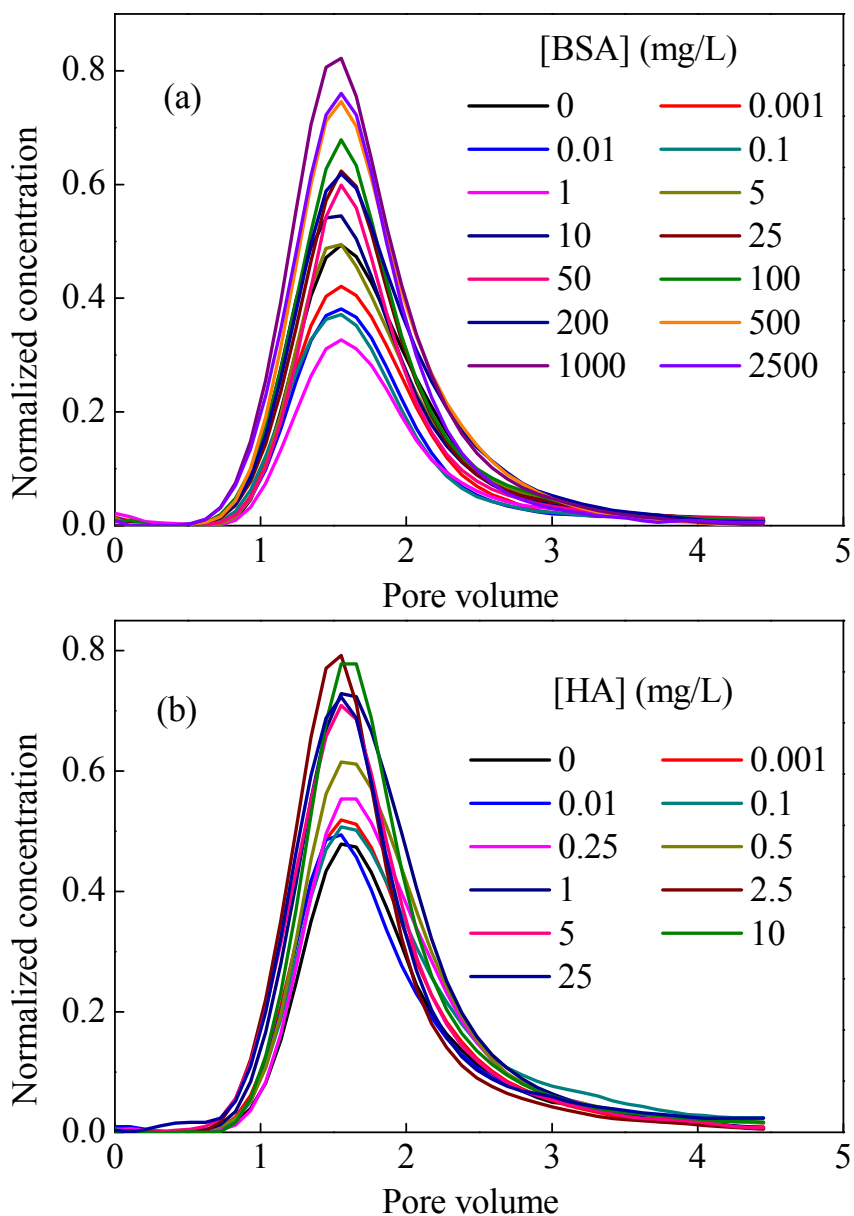
20 **Contents**

21 **Fig. S1** Variation of normalized column effluent concentrations with pore volumes
22 number under different concentrations of BSA (a) and HA (b). Results were obtained
23 at 1 mL 100 mg/L CeO₂-NPs injection, 50 mM NaCl as background electrolyte, pH
24 5.54 and flow rate 2 mL/min.

25 **Fig. S2** The UV-Visible spectra (a), size distribution (b), zeta potential (c) and TEM (d)
26 of the CeO₂-NPs dispersed suspensions.

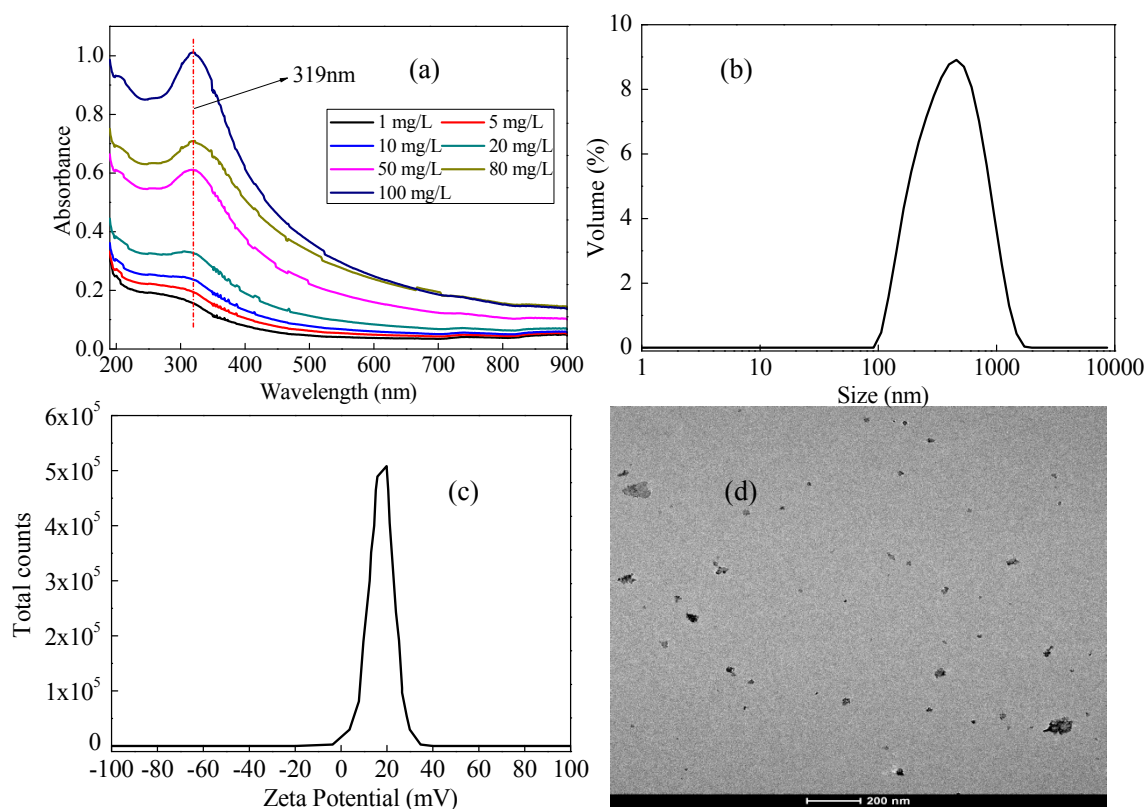
27

28



30

31 **Fig. S1** Variation of normalized column effluent concentrations with pore volumes
 32 number under different concentrations of BSA (a) and HA (b). Results were obtained
 33 at 1 mL 100 mg/L CeO₂-NPs injection, 50 mM NaCl as background electrolyte, pH
 34 5.54 and flow rate 2 mL/min.



36

37 **Fig. S2** The UV-Visible spectra (a), size distribution (b), zeta potential (c) and TEM (d)
38 of the CeO₂-NPs dispersed suspensions.