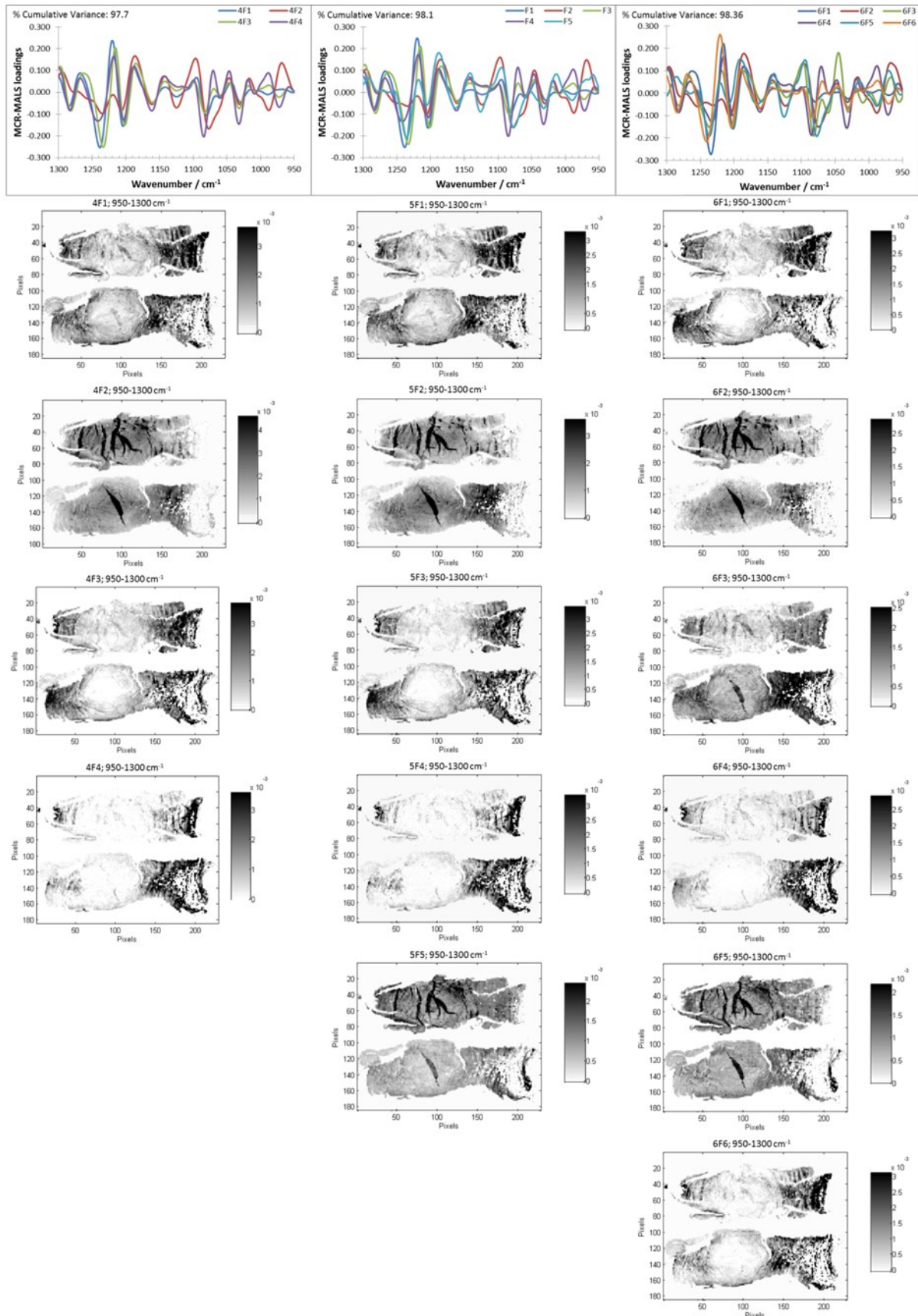
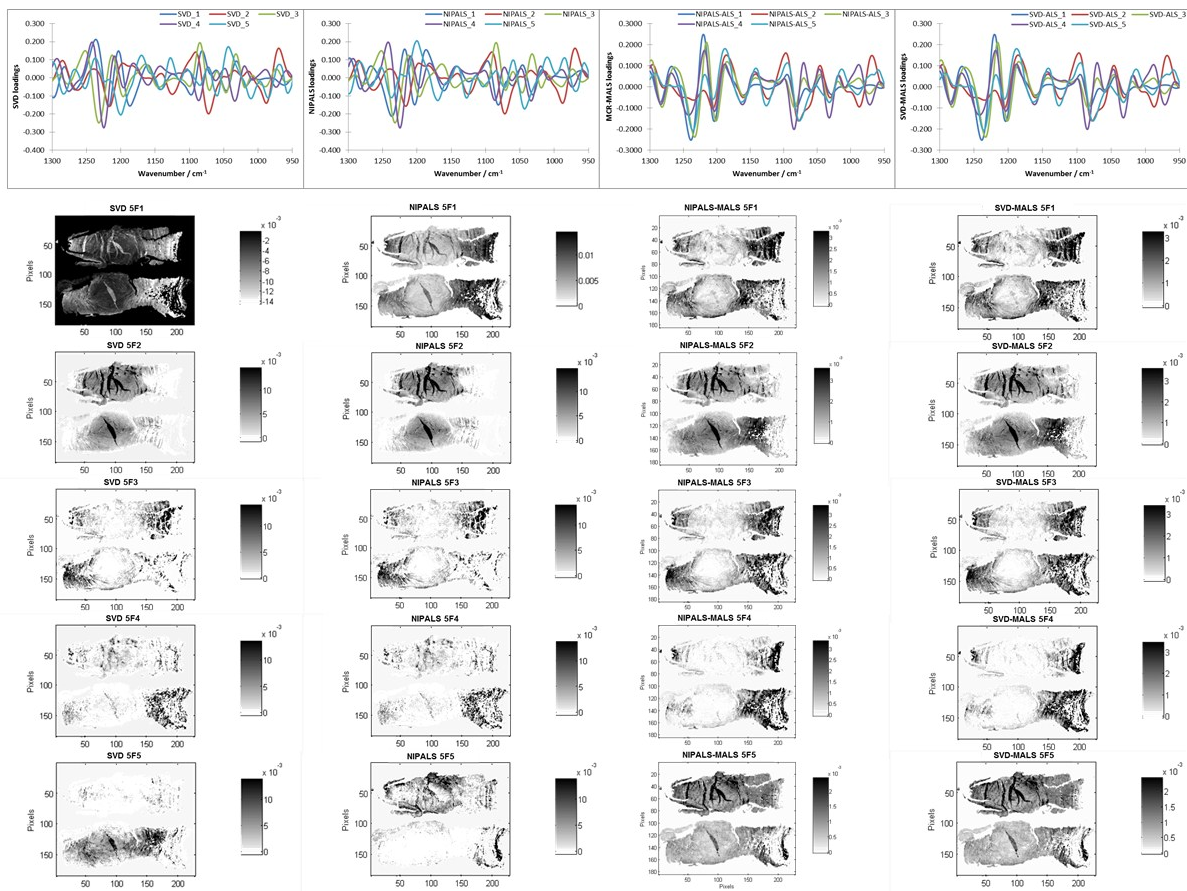


S1: Evolution of estimated spectral profiles and distribution maps derived from MCR-ALS analysis of goat IVDs samples in a wavenumber region of 950-1600  $\text{cm}^{-1}$  using four to six factors to model the data.



S2: Evolution of estimated spectral profiles and distribution maps derived from MCR-ALS analysis of goat IVDs samples in a wavenumber region of  $950\text{-}1300\text{ cm}^{-1}$  using four to six factors to model the data.



S3: Examples of loadings and scores derived from the data matrix of goat IVD samples (set one) in the spectral region of 950-1600 cm<sup>-1</sup>; calculated using SVD, NIPALS as well as NIPALS-MALS and SVD-MALS methods. All calculations are based on five components.



S4: Examples of loadings and scores derived from the data matrix of goat IVD samples (set one) in the spectral region of 950-1300  $\text{cm}^{-1}$ ; calculated using SVD, NIPALS as well as NIPLAS-MALS and SVD-MALS methods. All calculations are based on five components.