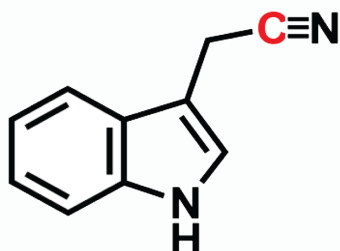
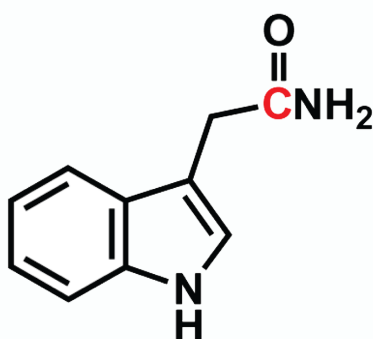


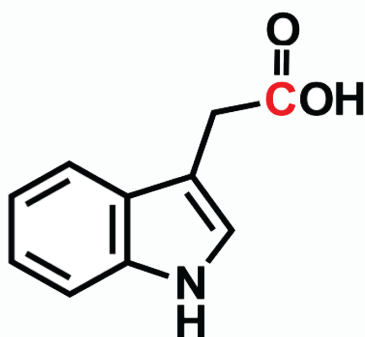
Indole



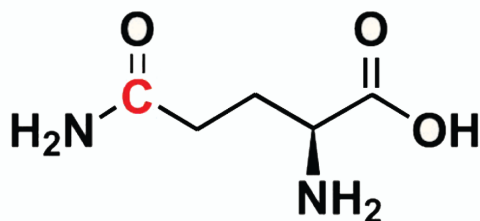
Indole-3-Acetonitrile



Indole-3-Acetamide



Indole-3-Acetic Acid



L-Glutamine

**Supplemental Figure 2.** Complex organic  $^{11}\text{C}$ -labeled radiotracers used in this study. The carbon atom highlighted in red shows the sight where the radioisotope was inserted into the substrate skeleton.