

1,25 (OH)₂D₃ treatment alters the granulomatous response in *M. tuberculosis* infected mice

Kamlesh Bhatt^{1, *}, Wasiulla Rafi^{1, §}, Neel Shah^{1, ‡}, Sylvia Christakos² and Padmini Salgame¹

¹ Department of Medicine, Center for Emerging Pathogens, Rutgers, New Jersey Medical School, Newark, NJ, USA.

² Department of Microbiology, Biochemistry and Molecular Genetics, Rutgers, New Jersey Medical School, Newark, New Jersey, USA.

§ *Current address*: Ogilvy Commonwealth Worldwide, 440 Interpace Parkway, Parsippany, New Jersey, USA

‡ *Current address*: Rowan University School of Osteopathic Medicine, Stratford, New Jersey, USA.

*Correspondence to: Bhattka@njms.rutgers.edu

Supplementary Figures

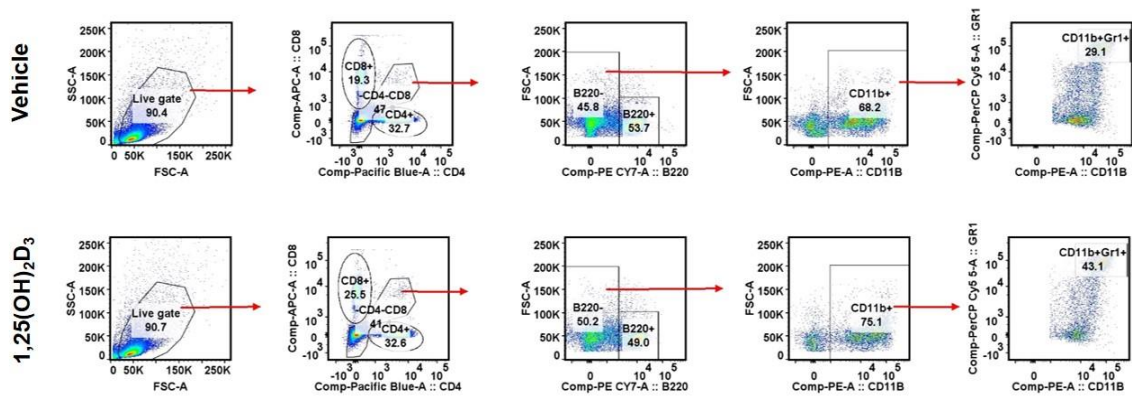


Figure S1: Sequential gating strategy to identify various cell populations (Figure 1) derived from single cell suspensions from the Mtb infected lungs.

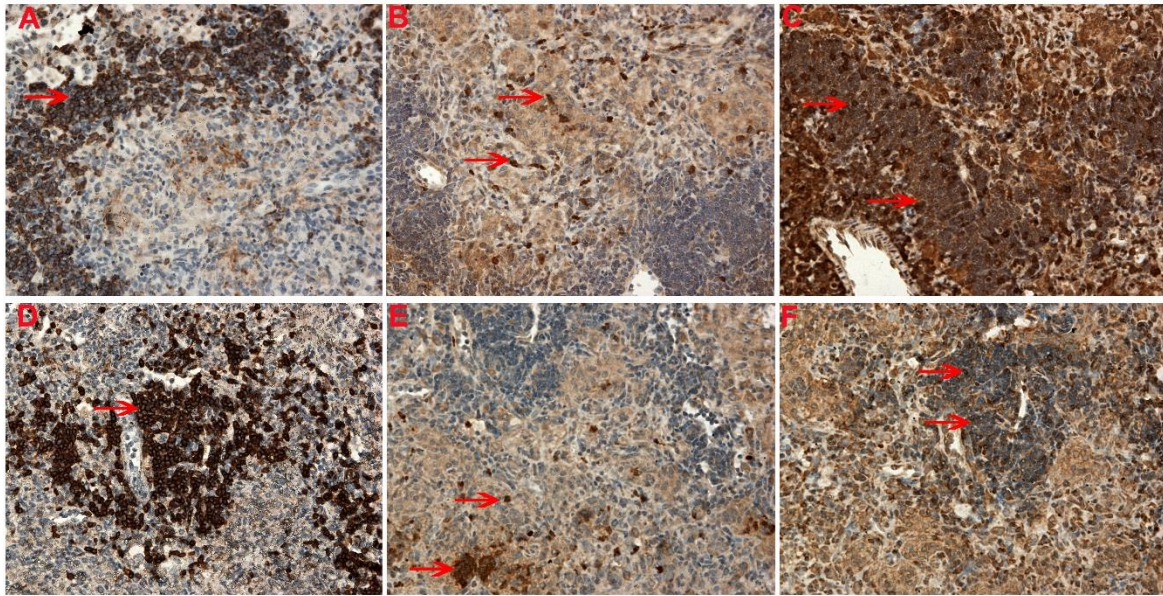


Figure S2: Boxed area in Figure 3 at 200X magnification. Arrows indicate the stained cells in the tissue.