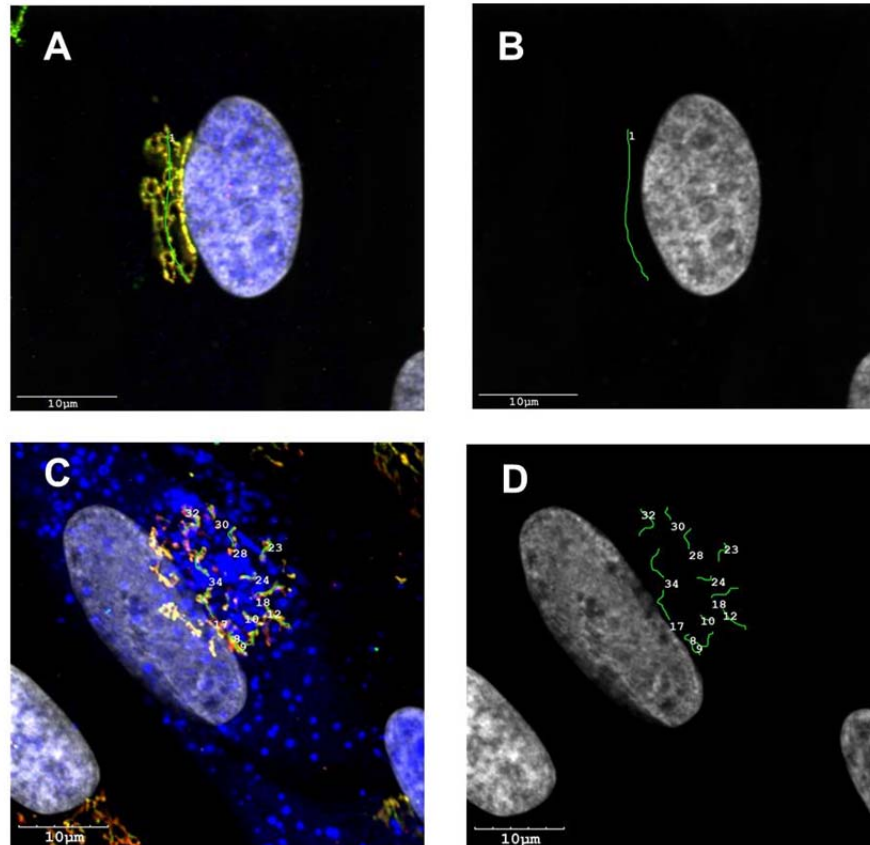


284
285
286
287

Supplemental Material: Rebmann, et.al. Phosphorylation of the Golgi peripheral membrane protein Grasp65 is an integral step in formation of the human cytomegalovirus cytoplasmic assembly compartment.

Rebmann
Suppl Fig 1



288
289
290
291
292
293
294
295
296

Supplemental Figure 1. Measurement of morphometry of transverse length of Golgi and lengths of Golgi fragments. (A) Day 1 infected cells stained with anti-pp65 (blue), anti-Grasp65 (red), and anti-GM130 (green). Merged channel yields yellow of overlapping signals. **(B)** Green line demarcates Golgi from Panel A and analytics of software provided quantification of length. **(C)** Fragmented Golgi on day 3 post-infection stained with anti-pp65 (blue), anti-Grasp65 (red), and anti-GM130 (green). Continuous Golgi fragments are numbered. **(D)** Fragment lengths demarcated by green lines and quantification of fragment length determined by software.