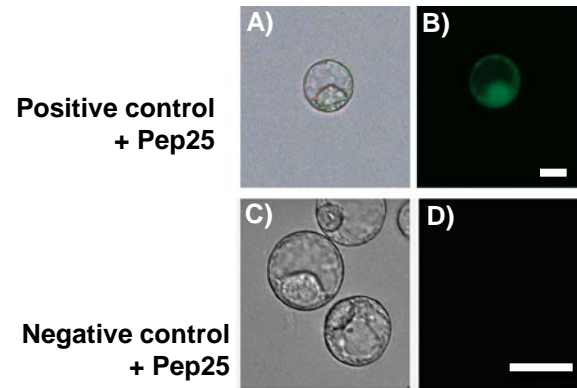


S1 Supporting Information



S1 Fig. Microscopic pictures of transiently transformed protoplasts. GFP construct containing the CaMV 35S promoter as a positive control (A-B) were transiently transformed into TH3 tomato protoplasts using a modified PEG method. GFP fluorescence was analysed 12 h after Pep25 treatment (A). Non-transformed protoplasts were used as a negative control (C-D). Scale bar: 25 μ m.