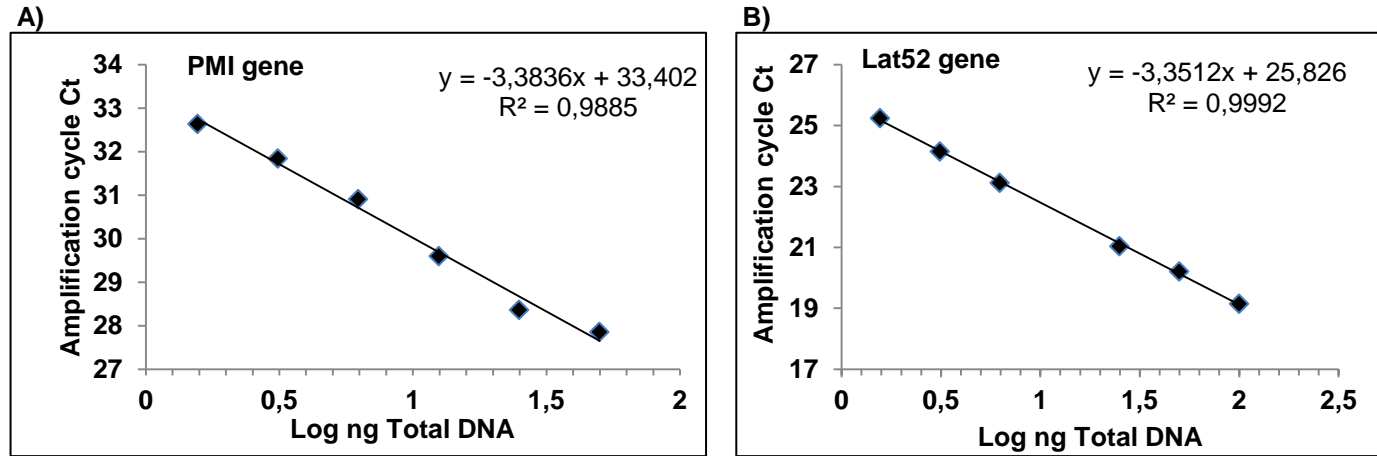


S4 Supporting Information



S4 Fig. Representative standard curves of Real-time PCR amplification of the Phosphomannose isomerase (PMI) gene (A) and the Lat52 endogenous gene (B). Representative standard curve were obtained from the amplification of twofold serial dilutions of DNA from line T583. Axis: Cycle threshold (Ct) value versus the logarithmic concentration (ng) of total DNA. Dark dots represent the 6 points analyzed by triplicate.