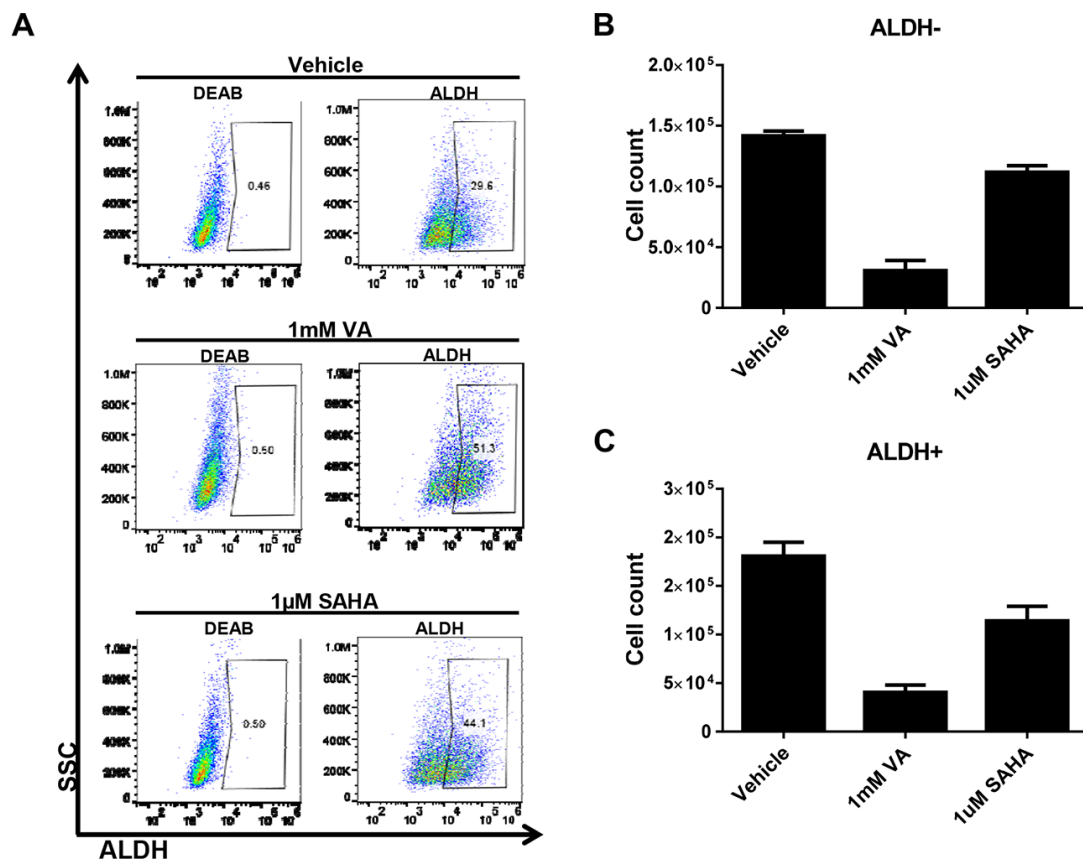
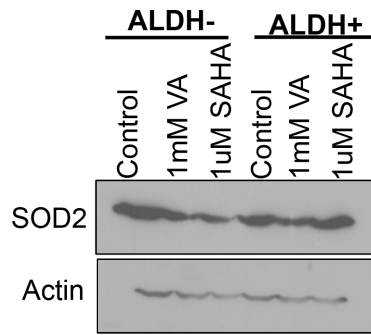


## Histone deacetylase inhibitor–induced cancer stem cells exhibit high pentose phosphate pathway metabolism

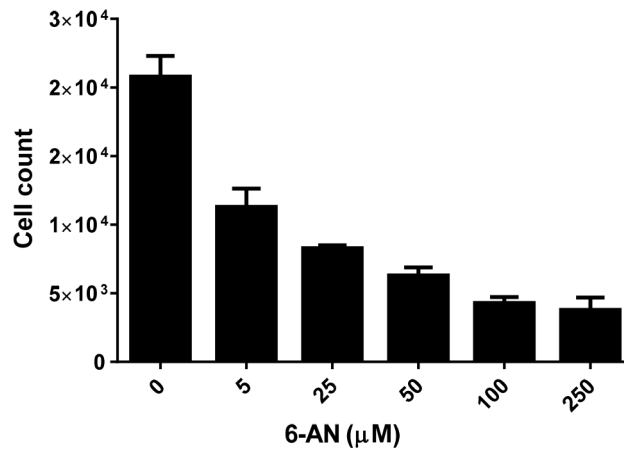
### Supplementary Materials



**Supplementary Figure S1: Effect of HDAC inhibitors on CSCs and proliferation.** (A) A representative flow cytometry diagram illustrating increased ALDH<sup>+</sup> cells in unsorted SUM159 cells treated with HDAC inhibitors. Gating is set to DEAB-inhibitor control cells for each sample. (B and C) Cell viability in ALDH<sup>-</sup> (B) and ALDH<sup>+</sup> (C) cells treated for 7 days showed reduced viability with HDAC inhibitor treatment.



**Supplementary Figure S2: SOD2 expression in HDACi-CSCs.** Immunoblotting showed a reduction in SOD2 protein expression in ALDH<sup>-</sup> and ALDH<sup>+</sup> cells treated with HDAC inhibitors, particularly VA.



**Supplementary Figure S3: The effect of 6-AN on cell viability.** ALDH<sup>-</sup> cells showed reduced viability with increasing doses of 6-AN.