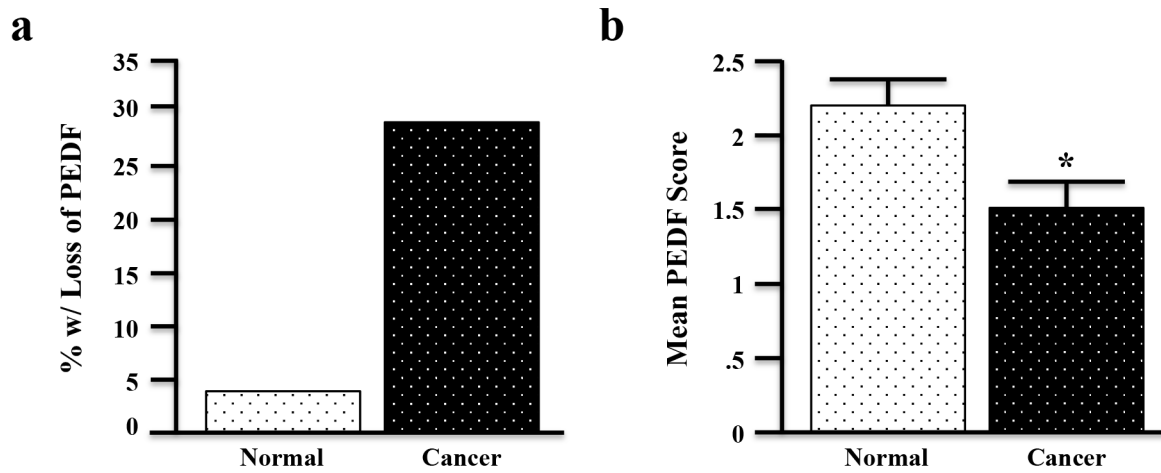
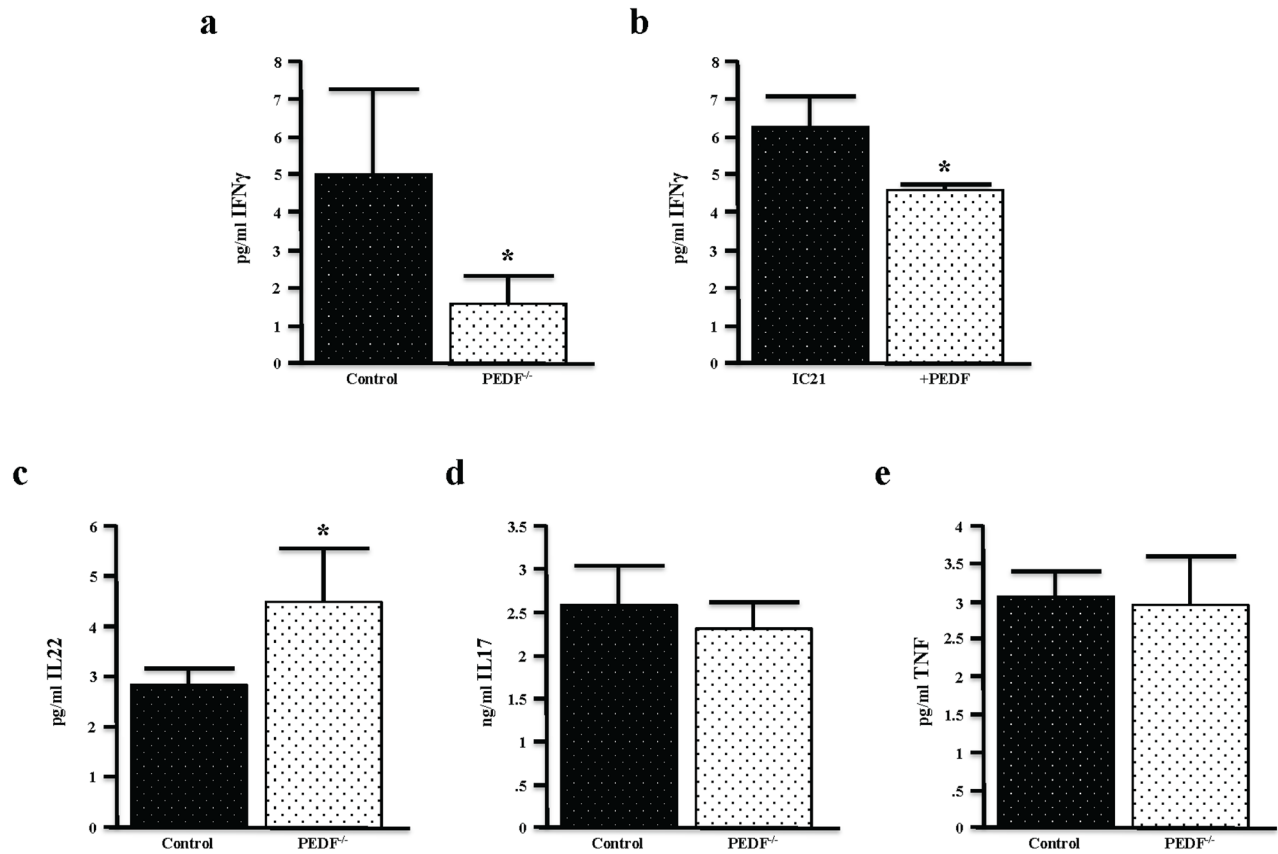


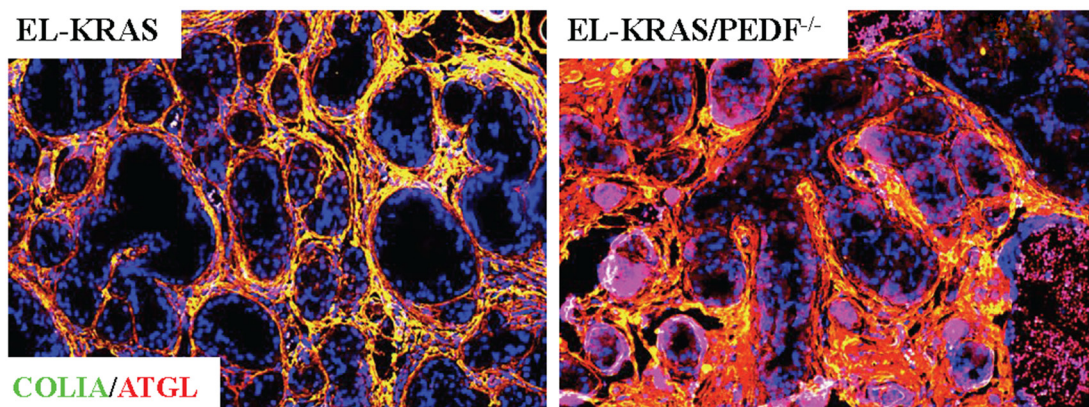
## SUPPLEMENTARY FIGURES



**Supplementary Figure S1: PEDF Expression is Reduced in Primary Pancreatic Cancer Samples.** **a.** Human pancreatic cancer and non-malignant tissue sections were stained for PEDF and scored from 0-3+. Approximately 30% of cancer tissue had complete loss (0 score) of PEDF expression, while this was observed in less than 5% of adjacent, non-malignant sections. **b.** Cancer tissues had significantly reduced mean PEDF expression compared to adjacent normal sections. (\*,  $p < 0.05$ ).



**Supplementary Figure S2: Loss of PEDF Increases Pro-Inflammatory Cytokines.** **a.** Serum samples from four-month-old control and PEDF<sup>-/-</sup> mice were evaluated for expression of the anti-proliferative cytokine interferon- $\gamma$  (IFN $\gamma$ ). **b.** Murine IC21 macrophages were incubated with 20ng/ml of rPEDF for 24 hours, and the culture media evaluated for IFN $\gamma$  by multiplex assay. **c-e.** Serum from control and PEDF<sup>-/-</sup> mice were next evaluated for expression of the inflammatory cytokines IL22, IL17, and TNF by multiplex assay. (\*,  $p < 0.05$ ).



**Supplementary Figure S3: ATGL is Expressed in the Pancreatic Stroma.** Pancreatic tumor sections from control EL-KRAS mice (left) and EL-KRAS/PEDF<sup>-/-</sup> (right) mice were dual-stained with anti-Collagen IA and anti-ATGL.