

**Supplementary Information for:**

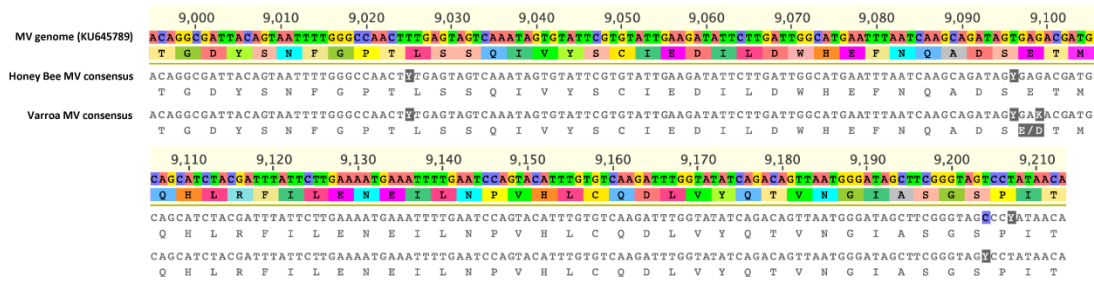
**Moku virus; a new *Iflavirus* found in wasps, honey bees and *Varroa*.**

Gideon J Mordecai, Laura E Brettell, Purnima Pachori, Ethel M. Villalobos, Stephen J Martin, Ian M Jones, and Declan C Schroeder

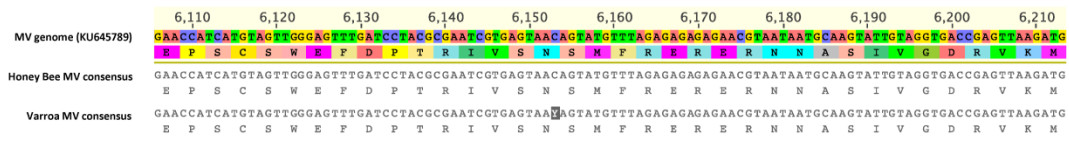
Content:

- 1) Supplementary Figure S1
- 2) Supplementary Figure S2

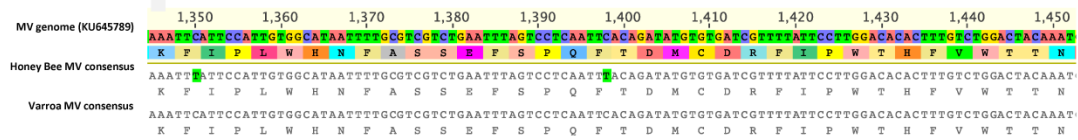
**A) RdRp region**



**B) Helicase region**

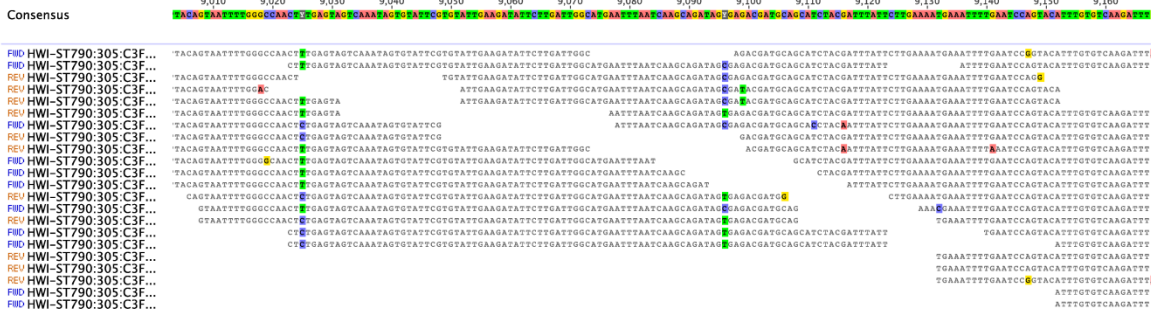


**C) VP3 region**

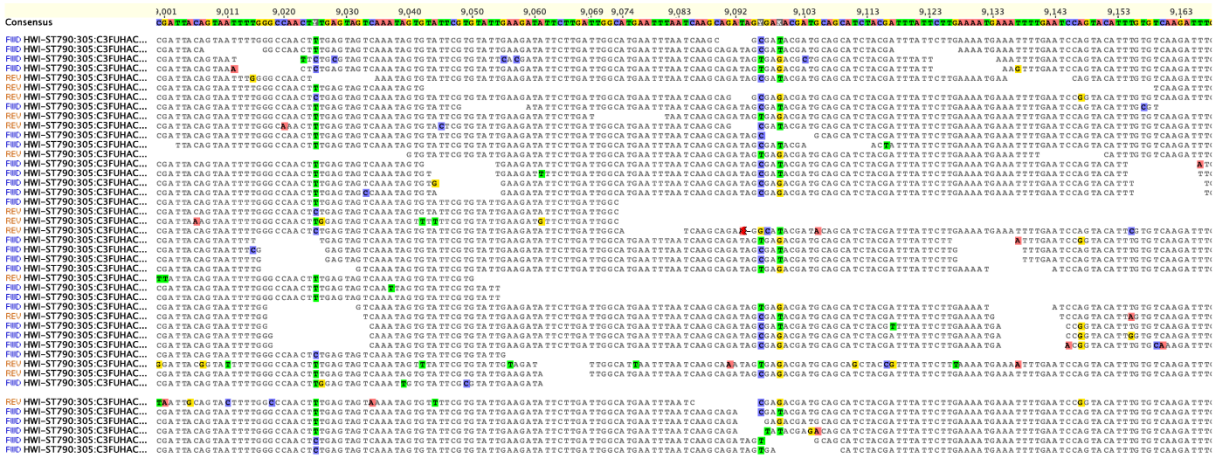


**Supplementary Figure S1.** Multiple sequence alignment of three MV genomic regions of the MV genome showing translated consensus sequence from honey bees and Varroa aligned against the wasp MV genome (KU645789). Substitutions against the MV genome are highlighted.

A) Honey bee



B) Varroa



Supplementary Figure S2. A screenshot of the Illumina reads mapped to the RdRP consensus region of MV genomes in Honey bee (A) and Varroa (B) as described in Supplementary Figure S1. Substitutions against the MV genome are highlighted