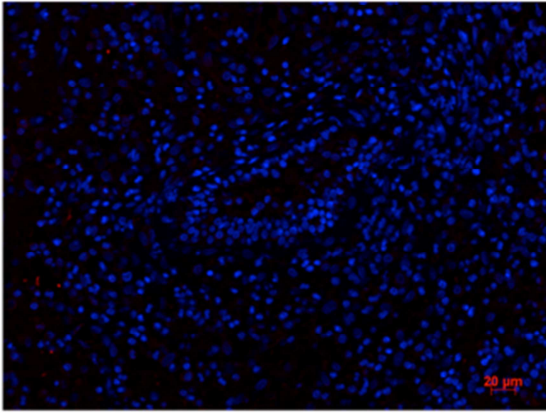


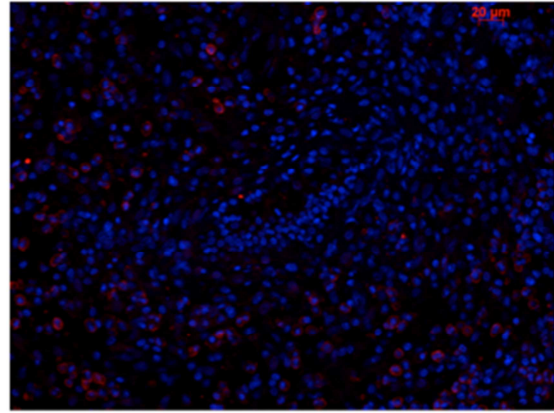
E1

A



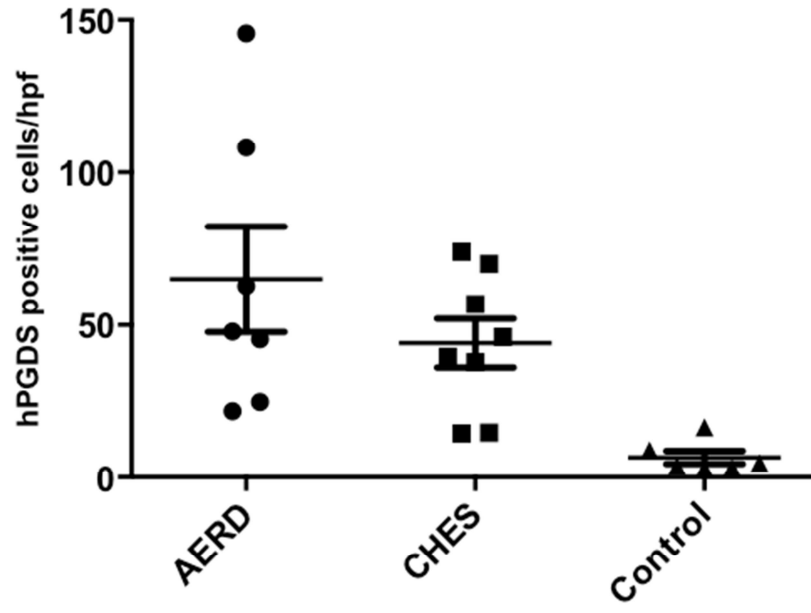
isotype

B



hPGDS

E2A



Online Supplement:

Table E1 Subject characteristics

	Controls (n=15)	Asthma (n=18)	AERD (n=10)
Sex (female, %)	9 (60%)	14 (78%)	7 (70%)
Age (mean±SEM)	37±4	20±1	41±4
Atopic Status (positive, %)	8 (53%)	18 (100%)	4 (40%)

Figure Legends

Figure E1 Isotype control of immunofluorescence for hPGDS. We performed immunofluorescence staining of polyp tissue as described in methods. E1A. AERD tissue was incubated with polyclonal rabbit sera and APC-labeled secondary antibody. E1B. AERD tissue was incubated with rabbit anti-hPGDS primary and APC-labeled secondary.

Figure E2 Quantification of hPGDS positive cells detected by immunofluorescence. Images were generated as described and analyzed by counting hPGDS positive cells and total cells (with the exclusion of epithelial and glandular cells). Dot plot showing positive hPGDS positive cells/ high-powered field (hpf) for AERD (n=7), CHES (n=8) and control tissue samples (n=6).