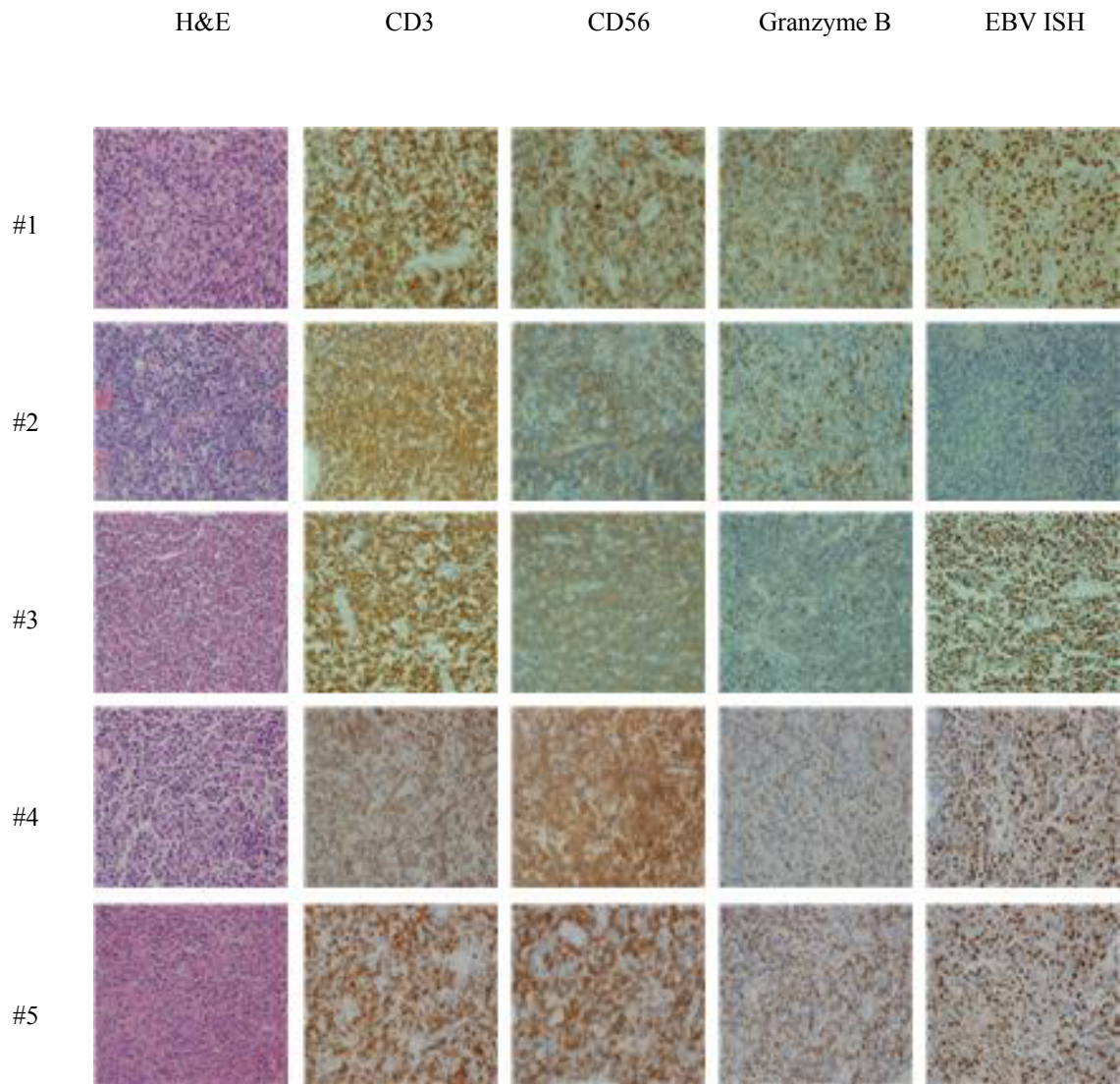


## SUPPLEMENTARY INFORMATION

### **Mutational Analysis of Extranodal NK/T-Cell Lymphoma Using Targeted Sequencing with a Comprehensive Cancer Panel**

**Seungkyu Choi<sup>1</sup>, Jai Hyang Go<sup>1</sup>, Eun Kyung Kim<sup>2</sup>, Hojung Lee<sup>2</sup>,  
Won Mi Lee<sup>2</sup>, Chun-Sung Cho<sup>3</sup>, Kyudong Han<sup>4\*</sup>**

<sup>1</sup>Department of Pathology, Dankook University College of Medicine, Cheonan 31116, Korea, <sup>2</sup>Department of Pathology, Eulji Medical Center, Eulji University School of Medicine, Seoul 01830, Korea, <sup>3</sup>Department of Neurosurgery, Dankook University College of Medicine, Cheonan 31116, Korea, <sup>4</sup>Department of Nanobiomedical Science, BK21 PLUS NBM Global Research Center for Regenerative Medicine, Dankook University, Cheonan 31116, Korea



**Supplementary Fig. 2.** Representative histological findings and immunohistochemical stains. EBV ISH, Epstein-Barr virus-encoded small RNA in situ hybridization.