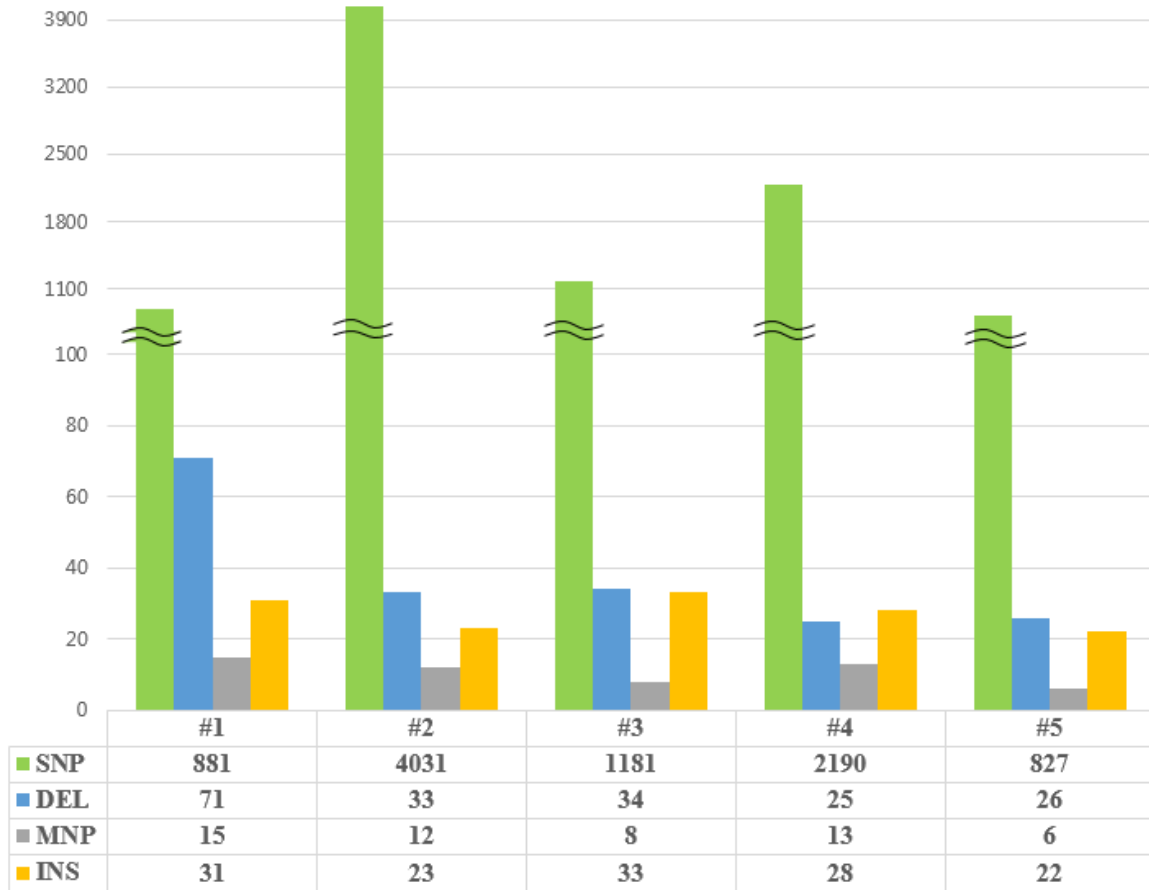


SUPPLEMENTARY INFORMATION

Mutational Analysis of Extranodal NK/T-Cell Lymphoma Using Targeted Sequencing with a Comprehensive Cancer Panel

**Seungkyu Choi¹, Jai Hyang Go¹, Eun Kyung Kim², Hojung Lee²,
Won Mi Lee², Chun-Sung Cho³, Kyudong Han^{4*}**

¹Department of Pathology, Dankook University College of Medicine, Cheonan 31116, Korea, ²Department of Pathology, Eulji Medical Center, Eulji University School of Medicine, Seoul 01830, Korea, ³Department of Neurosurgery, Dankook University College of Medicine, Cheonan 31116, Korea, ⁴Department of Nanobiomedical Science, BK21 PLUS NBM Global Research Center for Regenerative Medicine, Dankook University, Cheonan 31116, Korea



Supplementary Fig. 4. The number of variant types in each sample. SNP, single-nucleotide polymorphism; MNP, multinucleotide polymorphism; INS, insertion; DEL, deletion.