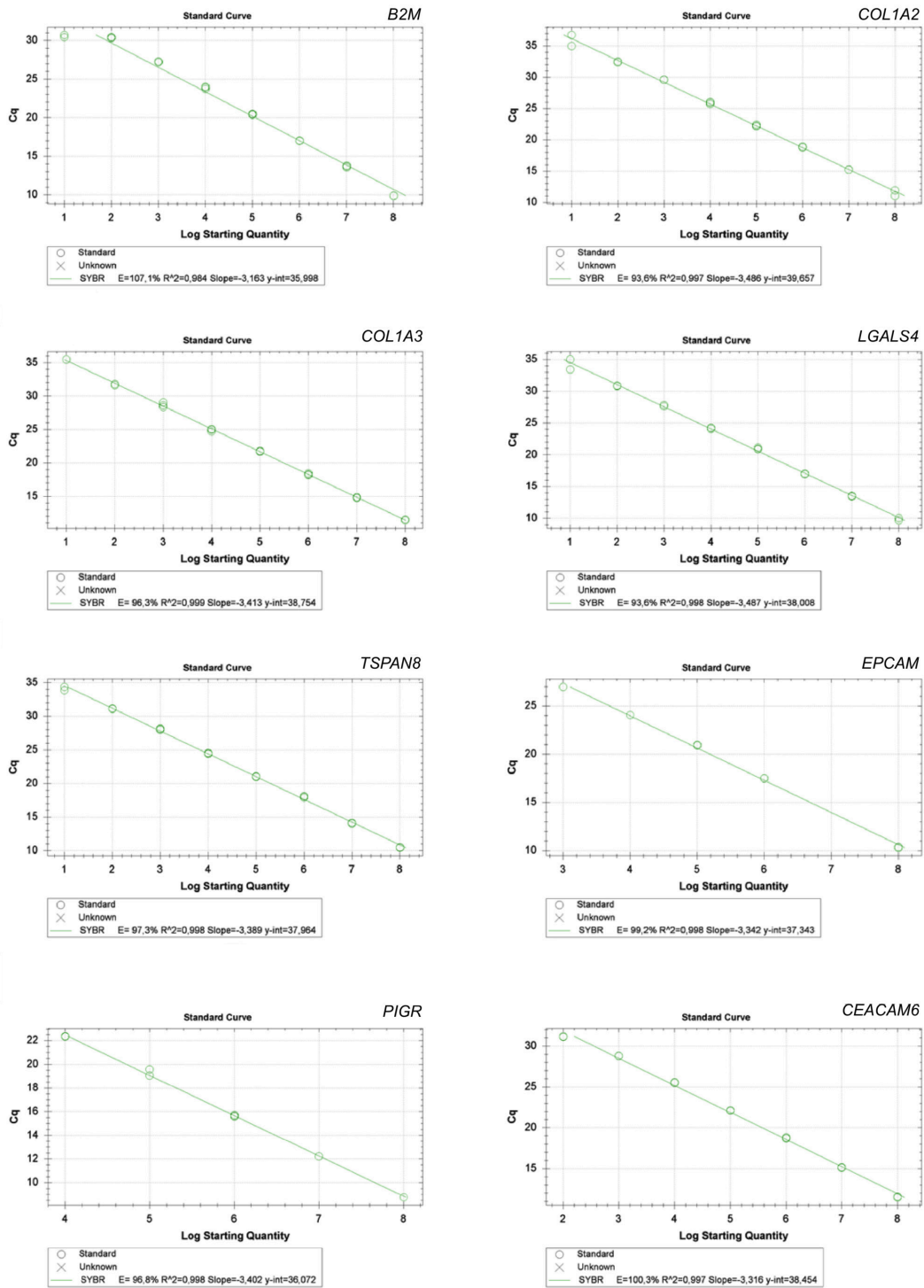
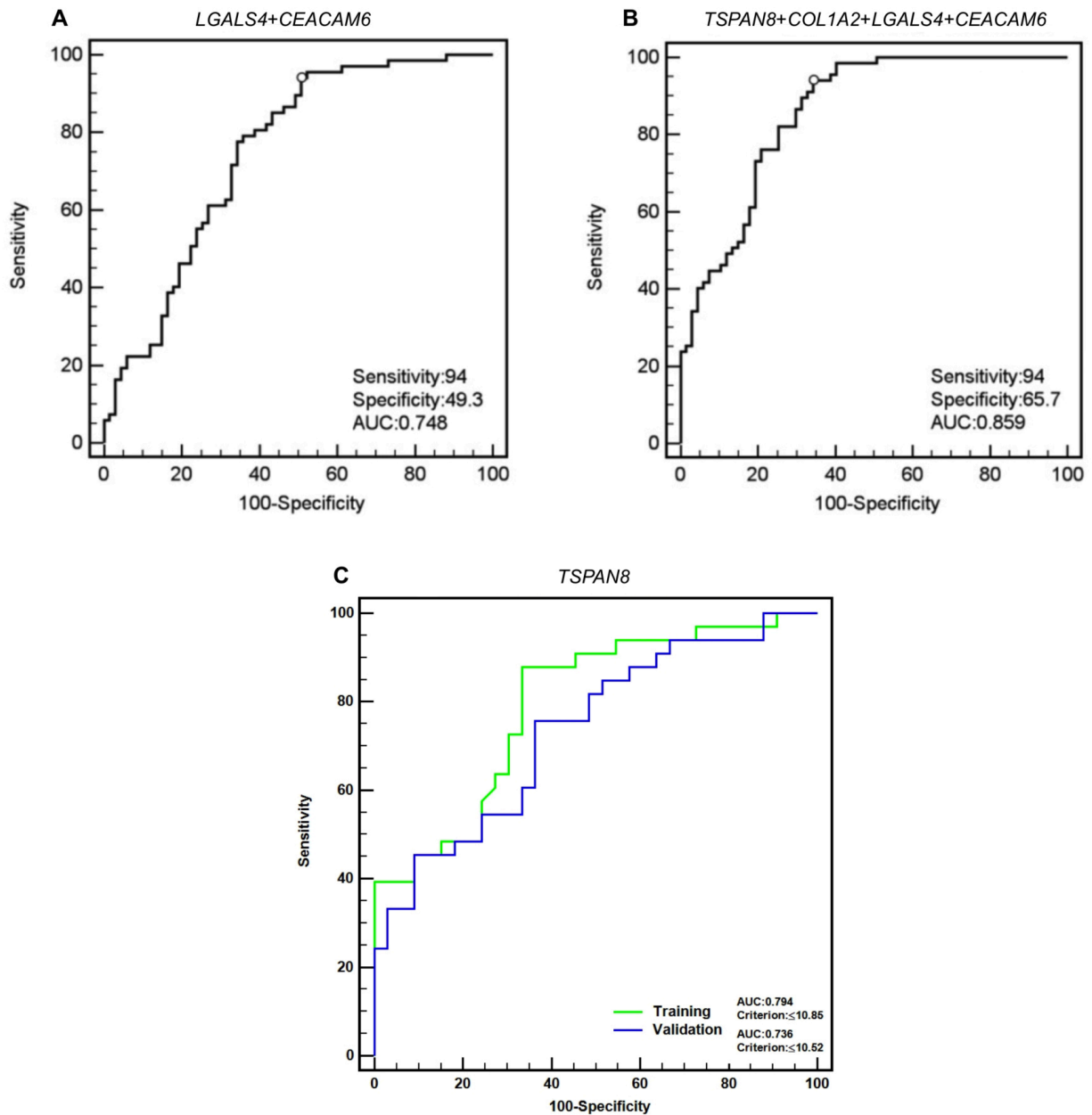


# Systematic large-scale meta-analysis identifies a panel of two mRNAs as blood biomarkers for colorectal cancer detection

## Supplementary Materials



Supplementary Figure S1: Standard curves of primers.



**Supplementary Figure S2: ROC curves of panels of the indicated marker combinations. (A) *LGALS4 + CEACAM6*; (B) *TSPAN8 + COL1A2 + LGALS4 + CEACAM6*; (C) Training/validation test for *TSPAN8*.**

**Supplementary Table S1: Pool 'A' - CRC Samples  
Pool 'B' - Blood Samples**

**Supplementary Table S2: List of 31,804 mapped loci of Transcriptome Map Comparison of CRC vs. Blood Cells (Pool 'A' vs Pool 'B' ) sorted in descending order of 'A'/'B' expression value. SD = Standard Deviation expressed as percentage of the Expression Value.**

**Supplementary Table S3: Primers efficiency (%)**

	<b>EFFICIENCY (%)</b>	<b>SLOPE</b>
<i>B2M</i>	107.1	-3.163
<i>COL1A2</i>	93.6	-3.486
<i>COL1A3</i>	96.3	-3.413
<i>LGALS4</i>	93.6	-3.487
<i>TSPAN8</i>	97.3	-3.389
<i>CEACAM6</i>	100.3	-3.316
<i>EPCAM</i>	99.2	-3.342
<i>PIGR</i>	96.8	-3.4

**Supplementary Table S4: Positive predicted values (PPV) and negative predicted values (NPV) for the indicated markers and the best panel combination.**

	<b>PPV</b>	<b>NPV</b>
<i>TSPAN8</i>	67.47%	78.43%
<i>LGALS4</i>	67.90%	77.36%
<i>COL1A2</i>	64.00%	68.97%
<i>CEACAM6</i>	61.64%	63.93%
<i>TSPAN8+LGALS4</i>	76.25%	88.85%