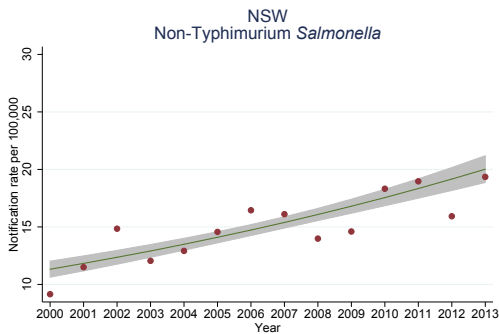
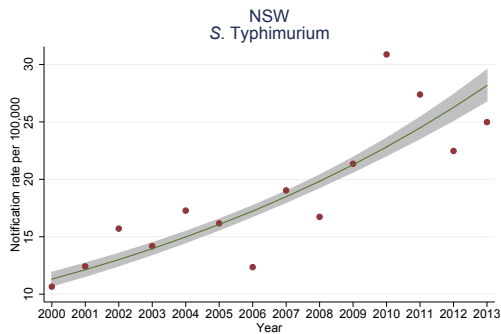
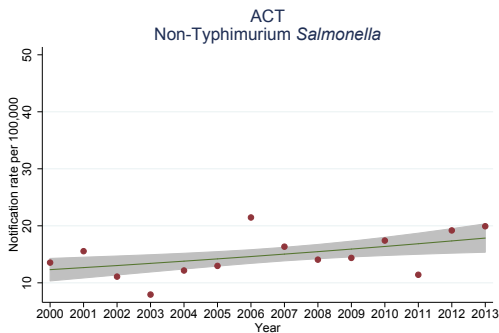
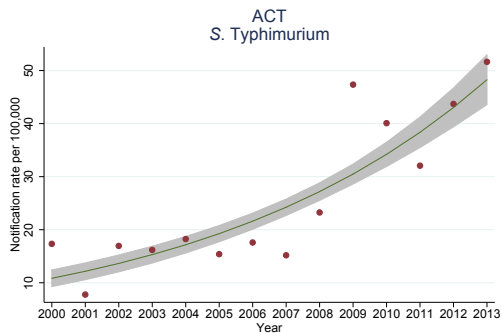
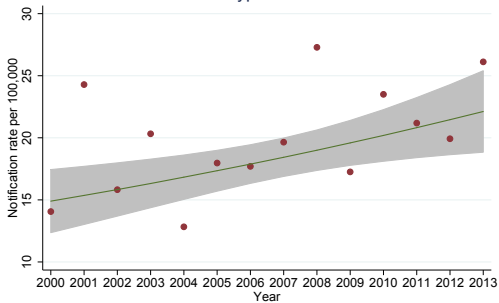


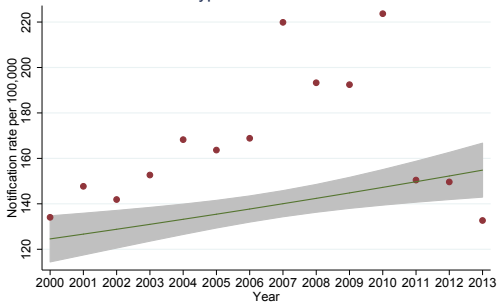
S1 Fig. State and territory crude (dots) and predicted (lines with 95% CI) notification rates per 100,000 persons, Australia 2000-2013



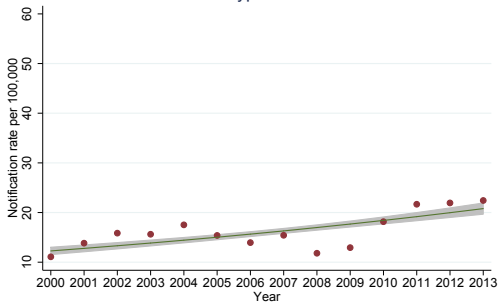
NT
S. Typhimurium



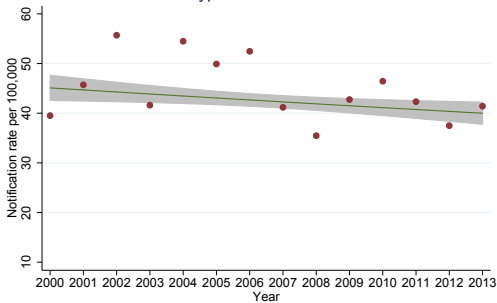
NT
Non-Typhimurium *Salmonella*



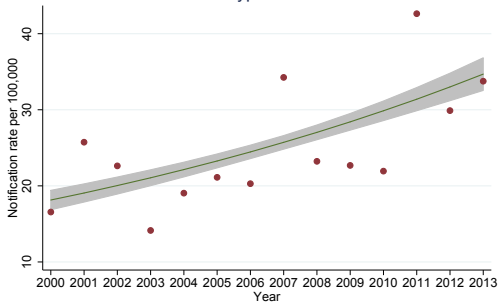
Qld
S. Typhimurium



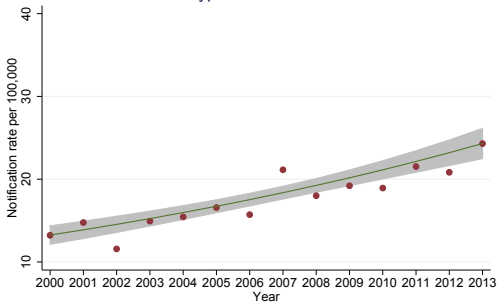
Qld
Non-Typhimurium *Salmonella*



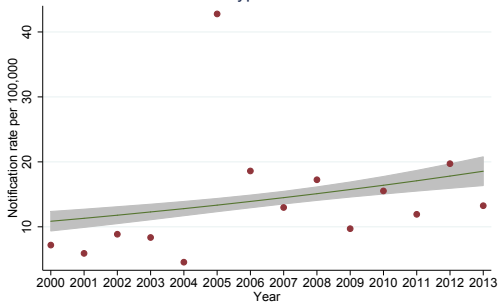
SA
S. Typhimurium



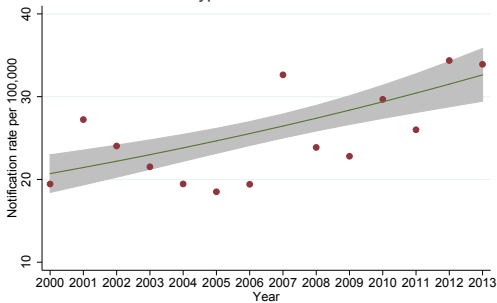
SA
Non-Typhimurium *Salmonella*



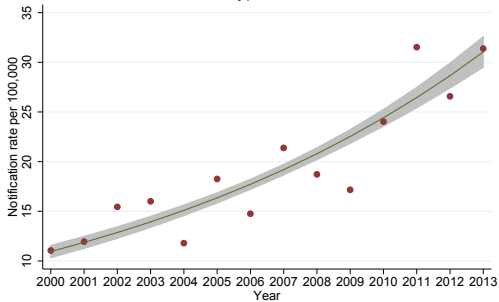
Tas
S. Typhimurium



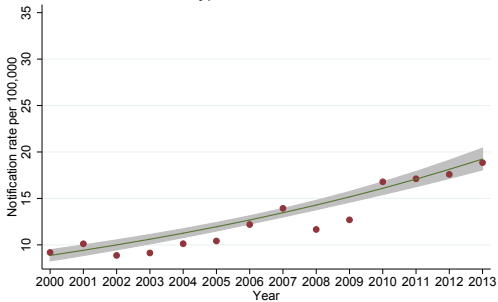
Tas
Non-Typhimurium *Salmonella*



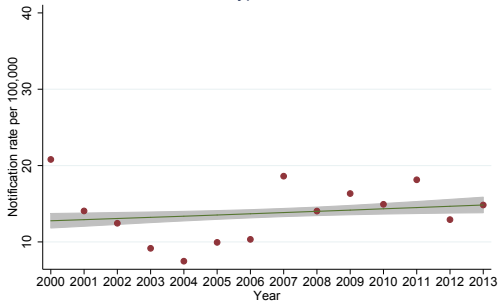
Vic
S. Typhimurium



Vic
Non-Typhimurium *Salmonella*



WA
S. Typhimurium



WA
Non-Typhimurium *Salmonella*

