

**Disabled-2 is a negative immune regulator of lipopolysaccharide-stimulated Toll-like receptor 4 internalization and signaling**

Wei-Shan Hung<sup>1</sup>, Pin Ling<sup>2,3</sup>, Ju-Chien Cheng<sup>4</sup>, Shy-Shin Chang<sup>5</sup>, Ching-Ping Tseng<sup>1,6,7,8</sup>

<sup>1</sup>Graduate Institute of Biomedical Sciences, College of Medicine, Chang Gung University, Kwei-Shan, Taoyuan 333, Taiwan, Republic of China

<sup>2</sup>Institute of Basic Medical Sciences, College of Medicine, National Cheng Kung University, Tainan 701, Taiwan, Republic of China

<sup>3</sup>Department of Microbiology and Immunology, College of Medicine, National Cheng Kung University, Tainan 701, Taiwan, Republic of China

<sup>4</sup>Department of Medical Laboratory Science and Biotechnology, China Medical University, Taichung 404, Taiwan, Republic of China

<sup>5</sup>Department of Family Medicine, Chang Gung Memorial Hospital, Kweishan, Taoyuan 333, Taiwan, Republic of China

<sup>6</sup>Department of Medical Biotechnology and Laboratory Science, College of Medicine, Chang Gung University, Kwei-Shan, Taoyuan 333, Taiwan, Republic of China

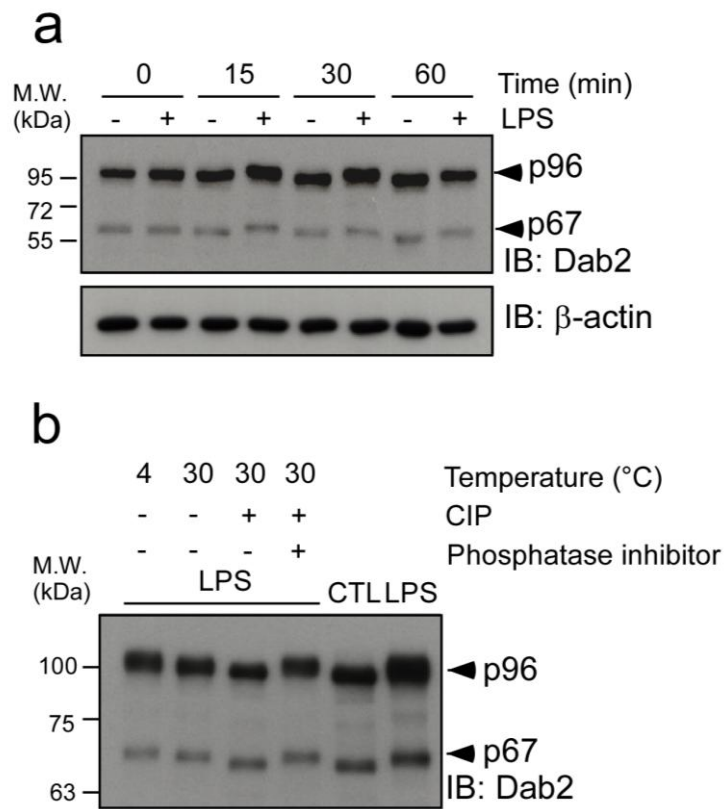
<sup>7</sup>Molecular Medicine Research Center, Chang Gung University, Kwei-Shan, Taoyuan 333, Taiwan, Republic of China

<sup>8</sup>Department of Laboratory Medicine, Chang Gung Memorial Hospital, Kwei-Shan, Taoyuan 333, Taiwan, Republic of China

**To whom all correspondence should be addressed:**

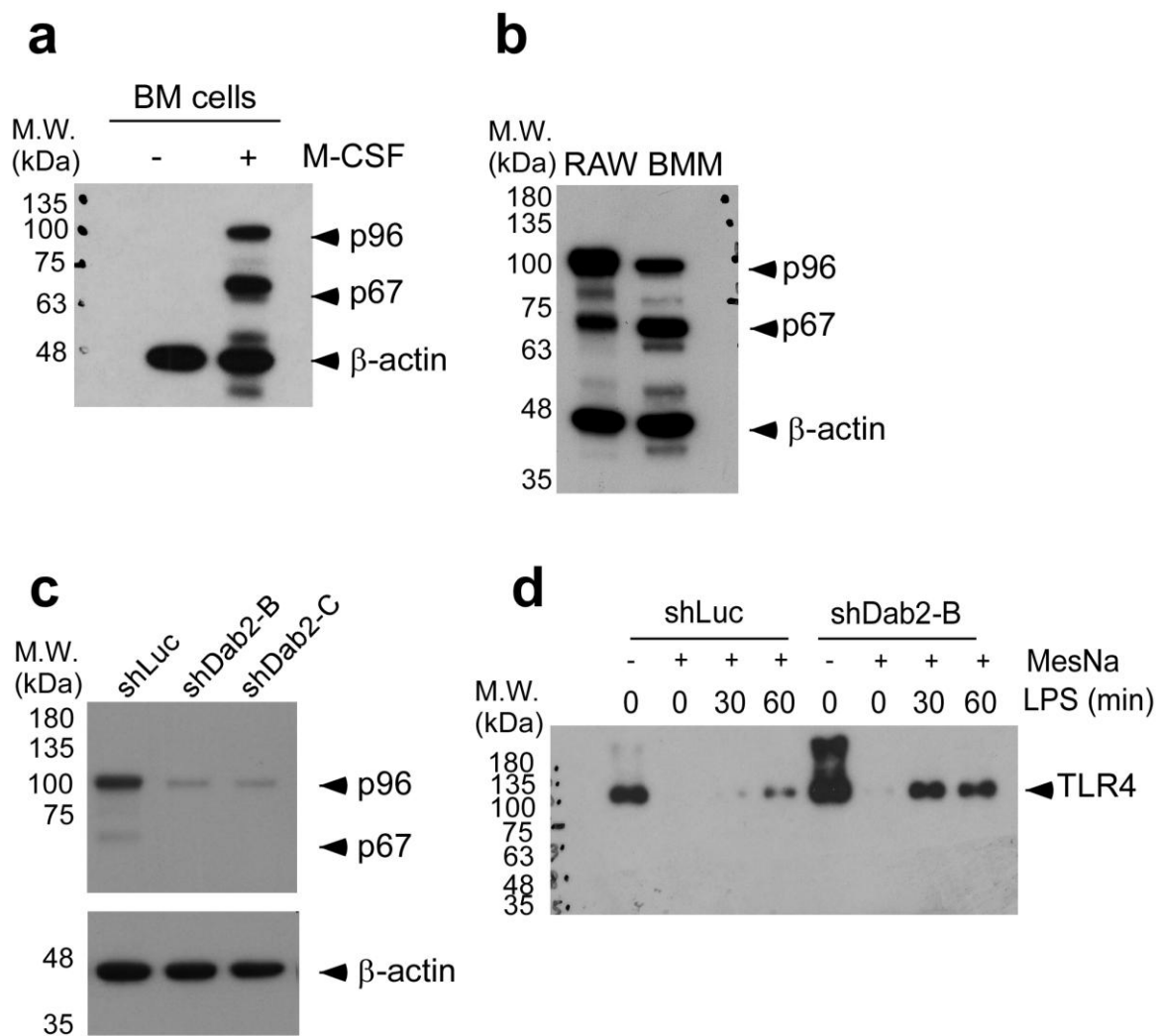
Ching-Ping Tseng, Department of Medical Biotechnology and Laboratory Science, College of Medicine, Chang Gung University, Kwei-Shan, Taoyuan 333, Taiwan, Republic of China. Tel.: +886-3-2118800 ext. 5202; Fax: +886-3-2118355; e-mail: [ctseng@mail.cgu.edu.tw](mailto:ctseng@mail.cgu.edu.tw).

## Supplementary Figure and Tables



### Supplementary Fig. S1 Dab2 was phosphorylated upon LPS stimulation.

(a) The shLuc cells were treated with LPS (100 ng/ml) for the indicated time. The cell lysates were collected for Western blotting using the antibody against Dab2. The expression of  $\beta$ -actin was used as a control for equal protein loading. (b) Reversal of gel mobility shift by phosphatase treatment. Protein extracts from shLuc cells treated with LPS for 30 min were kept at 4 $^{\circ}$ C or 30 $^{\circ}$ C in the presence of calf intestinal phosphatase (CIP) with or without the addition of the phosphatase inhibitors.



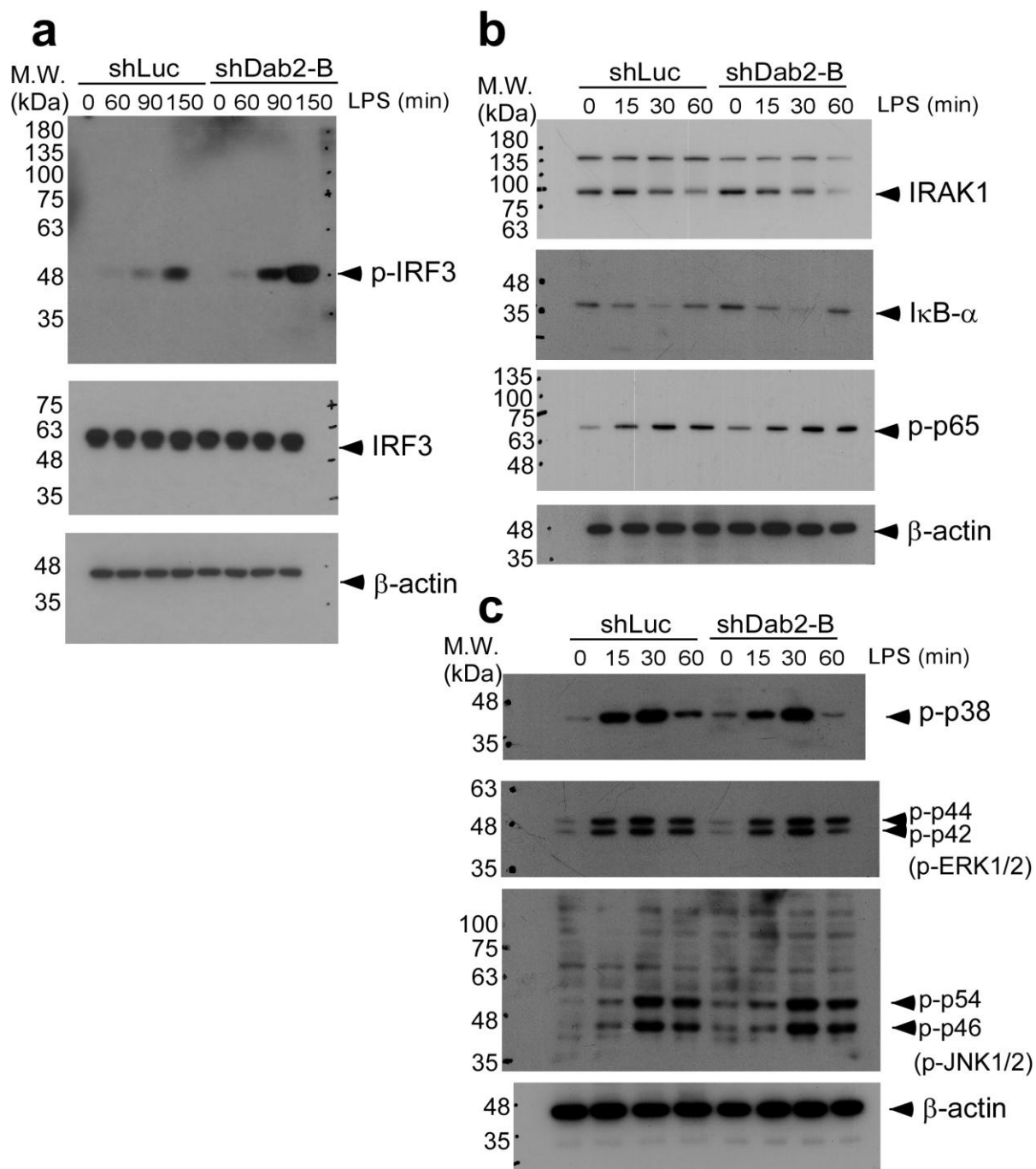
**Supplementary Fig. S2 Full Western blots of Fig. 1b, Fig. 1c, Fig. 2a and Fig. 3d.**

Fig. S2a: full Western blot of Fig. 1b.

Fig. S2b: full Western blot of Fig. 1c.

Fig. S2c: full Western blot of Fig. 2a.

Fig. S2d: full Western blot of Fig. 3d.

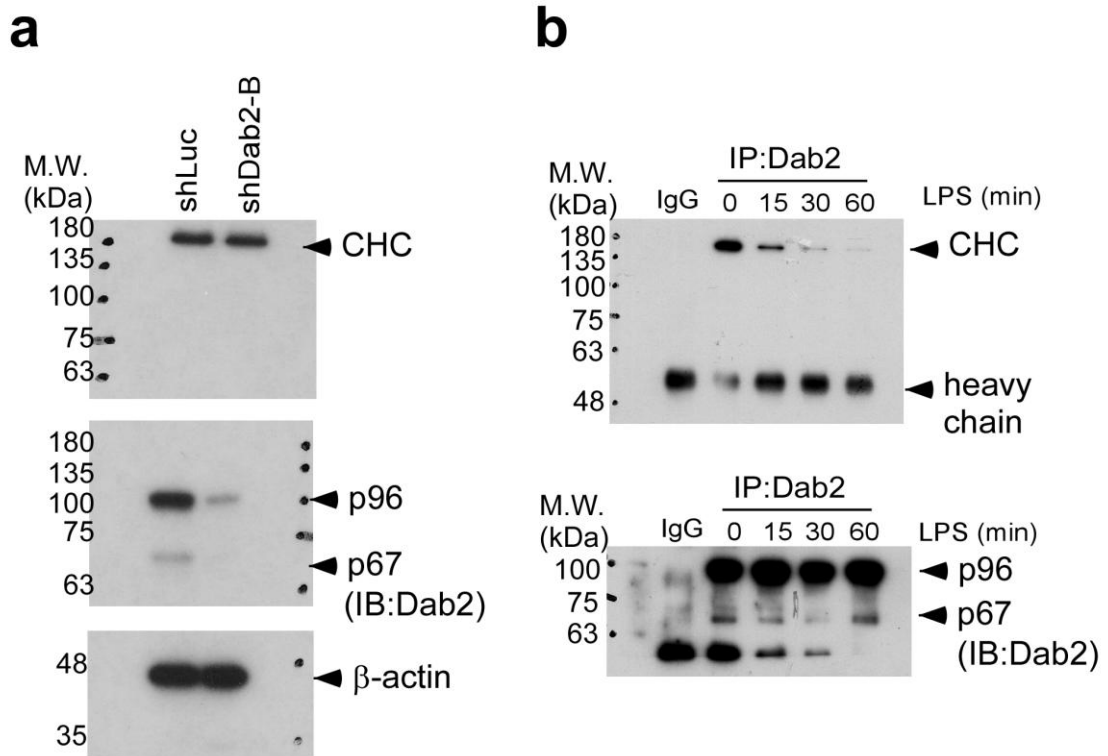


**Supplementary Fig. S3 Full Western blots of Fig. 4a-c.**

Fig. S3a: full Western blot of Fig. 4a .

Fig. S3b: full Western blot of Fig. 4b.

Fig. S3c: full Western blot of Fig. 4c.



**Supplementary Fig. S4 Full Western blots of Fig. 5b and Fig.5c**

Fig. S4a: full Western blot of Fig. 5b.

Fig. S4b: full Western blot of Fig. 5c.

**Table S1.-List of primer sets used in quantitative RT-PCR**

<b>No.</b>	<b>Gene</b>	<b>Primer sequences</b>
<b>1</b>	<b>mTNF-<math>\alpha</math></b>	Fw: 5'-CTA TGG CCC AGA CCC TCA CAC TC -3' Rv:5'-GCT GGC ACC ACT AGT TGG TTG TCT T 3'
<b>2</b>	<b>mIL-6</b>	Fw: 5'- CGT GGA AAT GAG AAA AGA GTT GTG-3' Rv:5'-CCA GTT TGG TAG CAT CCA TCA TTT CT 3'
<b>3</b>	<b>mIFN-<math>\beta</math></b>	Fw: 5'-GGC GGT TCC TTC GAG TGA CA-3' Rv:5'-GATGG CAAAG GCAGT GTAAC TCTT3'
<b>4</b>	<b>mRANTES</b>	Fw: 5'-TGC CCT CAC CAT CAT CCT CAC T-3' Rv:5'- GGC GGT TCC TTC GAG TGA CA-3'

**Table S2. The differentially expressed genes between LPS-treated and untreated shLuc cells (LL/LC)**

No.	GenBank accession no.	Gene Symbol	Log <sub>2</sub> Ratio	Fold Change
<b>Up-regulated genes</b>				
1	NM_009971.1	<i>Csf3</i>	6.64	100.00
2	NM_008361.3	<i>Il1b</i>	6.64	100.00
3	NM_009140.2	<i>Cxcl2</i>	6.64	100.00
4	NM_025404.3	<i>Arl4d</i>	6.64	99.72
5	NM_008392.1	<i>Irg1</i>	6.63	98.85
6	NM_007707.3	<i>Socs3</i>	5.52	45.79
7	NM_011198.3	<i>Ptgs2</i>	5.44	43.53
8	NM_013599.2	<i>Mmp9</i>	5.32	40.04
9	NM_177371.3	<i>Tnfsf15</i>	4.67	25.48
10	NM_007528.3	<i>Bcl6b</i>	4.56	23.56
11	NM_011333.3	<i>Ccl2</i>	4.20	18.44
12	NM_011610.3	<i>Tnfrsf1b</i>	4.17	17.98
13	NM_001159395.1	<i>Nfkbiz</i>	4.11	17.23
14	NM_001039701.3	<i>Il1rn</i>	4.05	16.56
15	NM_009344.3	<i>Phlda1</i>	4.02	16.23
16	NM_011113.3	<i>Plaur</i>	3.96	15.57
17	NM_007987.2	<i>Fas</i>	3.94	15.32
18	NM_010510.1	<i>Ifnb1</i>	3.74	13.34
19	NM_008871.2	<i>Serpine1</i>	3.73	13.27
20	NM_024406.2	<i>Fabp4</i>	3.71	13.09
21	NM_152804.2	<i>Plk2</i>	3.67	12.73
22	NM_011607.3	<i>Tnc</i>	3.67	12.73
23	NM_008321.2	<i>Id3</i>	3.67	12.70
24	NM_010484.2	<i>Slc6a4</i>	3.66	12.66
25	NM_013693.2	<i>Tnf</i>	3.62	12.30
26	NM_007836.1	<i>Gadd45a</i>	3.48	11.14
27	NM_009779.2	<i>C3ar1</i>	3.41	10.65
28	NM_011267.3	<i>Rgs16</i>	3.40	10.53
29	NM_001045526.2	<i>A430084P05Rik</i>	3.38	10.40
30	NM_009344.3	<i>Phlda1</i>	3.37	10.33

31	NM_023044.2	<i>Slc15a3</i>	3.33	10.06
32	NM_178890.3	<i>Abtb2</i>	3.31	9.91
33	NM_030720.1	<i>Gpr84</i>	3.30	9.83
34	NM_001025606.1	<i>Tmem171</i>	3.27	9.66
35	NM_023061.2	<i>Mcam</i>	3.24	9.47
36	NM_011057.3	<i>Pdgfb</i>	3.24	9.43
37	NM_030701.3	<i>Niacr1</i>	3.23	9.41
38	NM_019777.3	<i>Ikbke</i>	3.22	9.33
39	NM_009704.3	<i>Areg</i>	3.21	9.28
40	NM_001044384.1	<i>Timp1</i>	3.17	8.99
41	NM_019948.2	<i>Clec4e</i>	3.14	8.84
42	NM_145636.1	<i>Il27</i>	3.13	8.76
43	NM_025541.3	<i>Asf1a</i>	3.13	8.75
44	NM_133662.2	<i>Ier3</i>	3.12	8.69
45	NM_030701.3	<i>Niacr1</i>	3.12	8.67
46	NM_008230.5	<i>Hdc</i>	3.08	8.46
47	NM_009421.3	<i>Traf1</i>	3.04	8.21
48	NM_001177982.1	<i>Pde4b</i>	3.01	8.07
49	NM_026772.2	<i>Cdc42ep2</i>	2.97	7.84
50	NM_010235.2	<i>Fosl1</i>	2.93	7.61
51	NM_029478.3	<i>Vmpl</i>	2.92	7.58
52	NM_008655.1	<i>Gadd45b</i>	2.92	7.57
53	NM_009506.2	<i>Vegfc</i>	2.91	7.50
54	NM_008842.3	<i>Pim1</i>	2.86	7.25
55	NM_008655.1	<i>Gadd45b</i>	2.85	7.23
56	XR_140864.1	<i>5330417H12Rik</i>	2.83	7.13
57	NM_010807.4	<i>Marcksl1</i>	2.82	7.08
58	NM_009397.3	<i>Tnfaip3</i>	2.78	6.86
59	NM_172989.1	<i>Lpar1</i>	2.77	6.83
60	NM_011361.3	<i>Sgk1</i>	2.74	6.66
61	NM_001077189.1	<i>Fcgr2b</i>	2.73	6.64
62	NM_026644.2	<i>Agpat4</i>	2.71	6.56
63	NM_009396.2	<i>Tnfaip2</i>	2.70	6.49
64	NM_010187.2	<i>Fcgr2b</i>	2.70	6.48
65	NM_021274.2	<i>Cxcl10</i>	2.69	6.44
66	NM_153159.2	<i>Zc3h12a</i>	2.68	6.39



67	NM_009895.3	<i>Cish</i>	2.66	6.34
68	NM_025286.2	<i>Slc31a2</i>	2.63	6.19
69	NM_199241.2	<i>Sema6d</i>	2.63	6.19
70	NM_001146161.1	<i>Slc11a2</i>	2.63	6.17
71	NM_013807.2	<i>Plk3</i>	2.62	6.17
72	NM_207231.1	<i>Arl5c</i>	2.62	6.13
73	NM_007484.2	<i>Rhoc</i>	2.62	6.13
74	NM_001013365.2	<i>Osm</i>	2.61	6.11
75	NM_001048054.1	<i>Dusp16</i>	2.61	6.09
76	NM_008348.2	<i>Il10ra</i>	2.58	5.98
77	NM_029537.1	<i>Tmem98</i>	2.56	5.91
78	NM_174850.3	<i>Micall2</i>	2.56	5.88
79	NM_011110.4	<i>Pla2g5</i>	2.54	5.80
80	NM_009044.2	<i>Rel</i>	2.50	5.65
81	NM_026097.3	<i>Rffl</i>	2.48	5.57
82	NM_001005846.2	<i>Mcoln2</i>	2.48	5.56
83	NM_013867.2	<i>Bcar3</i>	2.47	5.53
84	NM_011338.2	<i>Ccl9</i>	2.46	5.50
85	NR_029806.1	<i>Mir221</i>	2.45	5.46
86	NM_176913.3	<i>Dpep2</i>	2.44	5.43
87	NM_021394.2	<i>Zbp1</i>	2.44	5.42
88	NM_008714.3	<i>Notch1</i>	2.44	5.42
89	NM_001081180.1	<i>Spink5</i>	2.43	5.40
90	NM_010208.4	<i>Fgr</i>	2.42	5.34
91	NM_010215.3	<i>Il4i1</i>	2.41	5.33
92	NM_015790.3	<i>Icosl</i>	2.39	5.25
93	NM_011426.3	<i>Siglec1</i>	2.38	5.19
94	NM_021384.4	<i>Rsad2</i>	2.35	5.11
95	NM_134102.4	<i>Pla1a</i>	2.33	5.05
96	NM_001191008.1	<i>Sstr5</i>	2.32	5.01
97	NM_019429.2	<i>Prss16</i>	2.32	4.98
98	NM_001048054.1	<i>Dusp16</i>	2.31	4.97
99	NM_010755.3	<i>Maff</i>	2.31	4.96
100	NM_145828.3	<i>Xylt2</i>	2.29	4.88
101	NM_133753.1	<i>Errfi1</i>	2.28	4.87

102	NM_001167680.1	<i>Rhbdf2</i>	2.28	4.86
103	NM_001039385.1	<i>Vgf</i>	2.27	4.83
104	NM_011756.4	<i>Zfp36</i>	2.25	4.75
105	NM_009743.4	<i>Bcl2l1</i>	2.25	4.75
106	NM_013612.2	<i>Slc11a1</i>	2.24	4.72
107	NM_017466.4	<i>Ccrl2</i>	2.23	4.71
108	NR_015566.2	<i>A330023F24Rik</i>	2.23	4.68
109	NM_028800.3	<i>Stk40</i>	2.22	4.66
110	NM_010090.2	<i>Dusp2</i>	2.22	4.65
111	NM_172833.2	<i>Malt1</i>	2.22	4.65
112	NM_177390.3	<i>Myo1d</i>	2.21	4.63
113	NM_009132.2	<i>Scin</i>	2.19	4.58
114	NM_025684.2	<i>Nepn</i>	2.19	4.57
115	NM_001163556.1	<i>Pou2f2</i>	2.19	4.56
116	NM_011577.1	<i>Tgfb1</i>	2.18	4.54
117	NM_010119.5	<i>Ehd1</i>	2.15	4.43
118	NM_007754.2	<i>Cpd</i>	2.14	4.42
119	NM_008416.3	<i>Junb</i>	2.13	4.39
120	NM_010577.3	<i>Itga5</i>	2.13	4.37
121	NM_019549.2	<i>Plek</i>	2.13	4.36
122	NM_011414.3	<i>Slpi</i>	2.11	4.32
123	NM_025638.2	<i>Gdpd1</i>	2.09	4.27
124	NM_026985.1	<i>1810033B17Rik</i>	2.07	4.20
125	NM_027455.2	<i>Qpct</i>	2.05	4.15
126	NM_010495.2	<i>Id1</i>	2.05	4.14
127	NM_001199305.1	<i>Atxn1</i>	2.04	4.11
128	NM_001033270.2	<i>Slc4a7</i>	2.04	4.10
129	NM_013652.2	<i>Ccl4</i>	2.03	4.09
130	NM_009612.2	<i>Acvrl1</i>	2.03	4.09
131	NM_018807.5	<i>Plagl2</i>	2.03	4.07
132	NM_011400.3	<i>Slc2a1</i>	2.02	4.06
133	NM_010403.2	<i>Hao1</i>	2.00	4.00
134	NM_001126047.1	<i>Sema4c</i>	2.00	3.99
135	NM_007413.4	<i>Adora2b</i>	1.99	3.97
136	NM_001099624.2	<i>Rapgef2</i>	1.99	3.96

137	NM_018764.2	<i>Pcdh7</i>	1.98	3.93
138	NM_009288.2	<i>Stk10</i>	1.96	3.90
139	NM_001163591.1	<i>Stx11</i>	1.96	3.88
140	NM_011408.1	<i>Slfn2</i>	1.94	3.84
141	NM_175437.3	<i>Pion</i>	1.94	3.83
142	NM_027871.1	<i>Arhgef3</i>	1.93	3.82
143	NM_001025395.2	<i>Src</i>	1.93	3.80
144	NM_001114088.1	<i>Pdlim7</i>	1.92	3.78
145	NM_008331.3	<i>Ifit1</i>	1.92	3.78
146	NM_011990.2	<i>Slc7a11</i>	1.90	3.74
147	NM_011227.1	<i>Rab20</i>	1.90	3.72
148	NM_013470.2	<i>Anxa3</i>	1.88	3.67
149	NM_018782.2	<i>Calcrl</i>	1.87	3.66
150	NM_001163591.1	<i>Stx11</i>	1.87	3.66
151	NM_175512.2	<i>Dhrs9</i>	1.86	3.63
152	NM_001040397.4	<i>Filip11</i>	1.86	3.63
153	NM_001093766.1	<i>Myadm</i>	1.86	3.63
154	NM_013532.2	<i>Lilrb4</i>	1.85	3.61
155	NM_023380.2	<i>Samsn1</i>	1.84	3.59
156	NM_011410.2	<i>Slfn4</i>	1.83	3.56
157	NM_026929.4	<i>Chac1</i>	1.83	3.55
158	NM_001243050.1	<i>Atp6v0a1</i>	1.82	3.54
159	NM_183177.2	<i>Zfp811</i>	1.82	3.52
160	NM_028127.3	<i>Frmd6</i>	1.81	3.51
161	NM_026058.4	<i>Lass4</i>	1.80	3.49
162	NM_144797.3	<i>Metrn1</i>	1.80	3.48
163	NM_153119.2	<i>Plekho2</i>	1.80	3.47
164	NM_011777.2	<i>Zyx</i>	1.79	3.47
166	NM_201518.4	<i>Flrt2</i>	1.79	3.46
167	NM_027249.2	<i>Tlcd2</i>	1.78	3.43
168	NM_001042659.1	<i>Fzd5</i>	1.77	3.41
169	NM_183148.3	<i>Iffo2</i>	1.76	3.40
170	NM_019472.2	<i>Myo10</i>	1.76	3.40
171	NM_134133.2	<i>2010002N04Rik</i>	1.76	3.39
172	NM_029422.3	<i>Tm7sf4</i>	1.76	3.39

173	NM_015789.3	<i>Dkk11</i>	1.76	3.38
174	NR_003508.1	<i>Mx2</i>	1.75	3.37
175	NM_019549.2	<i>Plek</i>	1.75	3.37
176	NM_080853.3	<i>Slc17a6</i>	1.74	3.35
177	NM_029021.1	<i>4833422F24Rik</i>	1.74	3.33
178	NM_001163565.1	<i>Ptpn5</i>	1.73	3.32
179	NM_001162921.1	<i>Zc3h12c</i>	1.72	3.28
180	NM_175645.3	<i>Xylt1</i>	1.71	3.28
181	NM_001135657.1	<i>Ptprj</i>	1.71	3.27
182	NM_011521.2	<i>Sdc4</i>	1.70	3.25
183	NM_011731.3	<i>Slc6a20b</i>	1.69	3.24
184	NM_008798.2	<i>Pdcd1</i>	1.69	3.23
185	XM_003084664.1	<i>Sh2d6</i>	1.69	3.22
186	NM_028696.3	<i>Obfc2a</i>	1.68	3.20
187	NM_176933.4	<i>Dusp4</i>	1.68	3.20
188	NM_008327.2	<i>Ifi202b</i>	1.66	3.17
189	NM_029847.4	<i>Arsk</i>	1.66	3.16
190	XR_141159.1	<i>5033430I15Rik</i>	1.65	3.15
191	NM_053109.3	<i>Clec2d</i>	1.65	3.13
192	NM_145953.2	<i>Cth</i>	1.64	3.13
193	NM_001040400.2	<i>Tet2</i>	1.64	3.12
194	NM_025821.2	<i>Carhsp1</i>	1.63	3.10
195	NM_008185.3	<i>Gstt1</i>	1.63	3.10
196	NM_145950.4	<i>Osgin2</i>	1.63	3.09
197	NM_008102.3	<i>Gchl</i>	1.62	3.08
198	NM_007656.4	<i>Cd82</i>	1.61	3.06
199	NM_001199305.1	<i>Atnx1</i>	1.61	3.05
200	NM_029083.2	<i>Ddit4</i>	1.61	3.05
201	NM_010696.3	<i>Lcp2</i>	1.61	3.05
202	NM_001077407.1	<i>Nrp2</i>	1.61	3.04
203	NM_207652.2	<i>Tsc22d1</i>	1.60	3.04
204	NM_175155.4	<i>Sash1</i>	1.60	3.04
205	NM_001205044.1	<i>Jarid2</i>	1.60	3.02
206	NM_001111060.1	<i>Cd59a</i>	1.59	3.01
207	NM_010029.2	<i>Ddx4</i>	1.58	2.98
208	NM_031195.2	<i>Msr1</i>	1.57	2.97

209	NM_172924.3	<i>C230081A13Rik</i>	1.57	2.97
210	NM_133833.2	<i>Dst</i>	1.57	2.97
211	NM_008416.3	<i>Junb</i>	1.57	2.96
212	NM_023516.5	<i>Hilpda</i>	1.56	2.96
213	NM_008518.2	<i>Ltb</i>	1.56	2.95
214	NM_001093766.1	<i>Myadm</i>	1.56	2.95
215	NM_001164220.1	<i>Trim13</i>	1.55	2.93
216	NM_021493.2	<i>Arhgap23</i>	1.55	2.93
217	NM_175093.2	<i>Trib3</i>	1.55	2.93
218	NM_080844.4	<i>Serpinc1</i>	1.55	2.93
219	NM_023516.5	<i>Hilpda</i>	1.54	2.91
220	NM_001142959.1	<i>Bcl2l15</i>	1.54	2.91
221	NM_001205053.1	<i>Jdp2</i>	1.54	2.90
222	NM_028807.3	<i>1200009I06Rik</i>	1.53	2.90
223	NM_172442.3	<i>Dtx4</i>	1.53	2.88
224	NM_181734.3	<i>Ttpal</i>	1.53	2.88
225	NM_015747.2	<i>Slc20a1</i>	1.52	2.87
226	NM_001190449.1	<i>Ddah2</i>	1.52	2.87
227	NM_172145.3	<i>Fam176b</i>	1.51	2.85
228	NM_025821.2	<i>Carhsp1</i>	1.51	2.85
229	NM_015783.3	<i>Isg15</i>	1.51	2.85
230	NM_029219.1	<i>Rnf19b</i>	1.51	2.85
231	NM_001113553.1	<i>Irak2</i>	1.50	2.83
232	NM_008795.2	<i>Cdk18</i>	1.49	2.82
233	NM_015766.2	<i>Ebi3</i>	1.49	2.81
234	NM_145456.2	<i>Zswim6</i>	1.49	2.80
235	NM_175092.3	<i>Rhof</i>	1.49	2.80
236	NM_201361.2	<i>Fam82a1</i>	1.48	2.79
237	NR_027888.1	<i>Sqrdl</i>	1.46	2.76
238	NM_145456.2	<i>Zswim6</i>	1.45	2.73
239	NM_007913.5	<i>Egr1</i>	1.45	2.73
<b>Down-regulated genes</b>				
1	NM_001252506.1	<i>St6gal1</i>	-4.08	16.94
2	NM_024124.3	<i>Hdac9</i>	-3.11	8.63
3	NM_145611.4	<i>Kank2</i>	-2.86	7.24
4	NM_198024.1	<i>Ranbp3l</i>	-2.82	7.08

5	NM_177000.3	<i>C130050O18Rik</i>	-2.73	6.61
6	NM_001081079.1	<i>Ogfrl1</i>	-2.65	6.28
7	NM_007426.3	<i>Angpt2</i>	-2.61	6.10
8	NM_001004156.2	<i>Plekhg5</i>	-2.55	5.87
9	NM_001081656.2	<i>Neurl1b</i>	-2.53	5.77
10	NM_198024.1	<i>Ranbp3l</i>	-2.49	5.61
11	NM_025768.2	<i>Grtp1</i>	-2.49	5.60
12	NM_020581.2	<i>Angptl4</i>	-2.47	5.52
13	NM_008278.2	<i>Hpgd</i>	-2.38	5.20
14	NM_008278.2	<i>Hpgd</i>	-2.37	5.17
15	NM_013495.2	<i>Cpt1a</i>	-2.37	5.16
16	NM_009025.2	<i>Rasa3</i>	-2.36	5.15
17	NM_001163687.1	<i>Naaa</i>	-2.31	4.96
18	NM_029116.2	<i>Kbtbd11</i>	-2.29	4.87
19	NM_001114312.1	<i>4930506M07Rik</i>	-2.27	4.81
20	NM_028340.1	<i>Susd3</i>	-2.25	4.77
21	NM_053261.2	<i>Impa2</i>	-2.22	4.66
22	NM_001170643.1	<i>Rnf144b</i>	-2.20	4.58
23	NM_028639.3	<i>Ttc7</i>	-2.19	4.55
24	NM_009846.2	<i>Cd24a</i>	-2.11	4.31
25	NM_027763.1	<i>Trem1</i>	-2.10	4.28
26	NM_134189.2	<i>Galnt10</i>	-2.05	4.14
27	NM_028039.2	<i>Esco2</i>	-2.05	4.14
28	NM_001195006.1	<i>Ndrp4</i>	-2.04	4.11
29	NM_001130186.1	<i>Phf17</i>	-2.02	4.05
30	NM_001080158.1	<i>Cenpm</i>	-2.01	4.02
31	NM_178667.4	<i>Tfdp2</i>	-2.01	4.02
32	NM_001085492.1	<i>Rere</i>	-2.01	4.02
33	NM_030198.3	<i>Gins3</i>	-1.99	3.96
34	NM_001081098.1	<i>Zfp362</i>	-1.97	3.92
35	XR_106143.1	<i>G430095P16Rik</i>	-1.96	3.89
36	NM_009154.2	<i>Sema5a</i>	-1.95	3.85
37	XM_003689164.1	<i>LOC100504500</i>	-1.95	3.85
38	NM_172838.3	<i>Slc16a12</i>	-1.93	3.81
39	NM_198305.2	<i>Klhl17</i>	-1.93	3.80
40	NM_145509.2	<i>5430435G22Rik</i>	-1.92	3.77

41	NM_001177867.1	<i>Sgol2</i>	-1.91	3.76
42	NM_020567.2	<i>Gmnn</i>	-1.91	3.75
43	NM_133746.5	<i>Calhm2</i>	-1.90	3.73
44	NM_024264.4	<i>Cyp27a1</i>	-1.90	3.73
45	NM_178699.4	<i>B930041F14Rik</i>	-1.89	3.70
46	NM_173047.3	<i>Cbr3</i>	-1.88	3.68
47	NM_009001.6	<i>Rab3a</i>	-1.88	3.67
48	NM_001159538.1	<i>Fgd2</i>	-1.88	3.67
49	NM_023326.2	<i>Bmyc</i>	-1.87	3.66
50	NM_178283.3	<i>Asb13</i>	-1.81	3.52
51	NM_198861.1	<i>BC046404</i>	-1.81	3.51
52	NM_001013368.5	<i>E2f8</i>	-1.80	3.49
53	NM_009387.2	<i>Tkl1</i>	-1.80	3.48
54	NM_001143777.1	<i>Fam13c</i>	-1.78	3.45
55	NM_145462.2	<i>Haus4</i>	-1.74	3.34
56	NM_001146180.1	<i>Mtss1</i>	-1.73	3.31
57	NM_026003.2	<i>Smarca2</i>	-1.73	3.31
58	NM_146040.1	<i>Cdca7l</i>	-1.73	3.31
59	NM_023431.5	<i>Mum1</i>	-1.72	3.31
60	NM_028576.2	<i>1700106N22Rik</i>	-1.72	3.30
61	NM_001167592.2	<i>Gm17365</i>	-1.72	3.30
62	NM_172734.3	<i>Stk38l</i>	-1.71	3.27
63	NM_018822.3	<i>Sgsh</i>	-1.71	3.27
64	NM_008618.3	<i>Mdh1</i>	-1.70	3.25
65	NM_172756.2	<i>Ankle1</i>	-1.70	3.25
66	NM_019976.3	<i>Psrl1</i>	-1.69	3.23
67	NM_009593.2	<i>Abcg1</i>	-1.69	3.22
68	NR_040293.1	<i>2310040G24Rik</i>	-1.67	3.18
69	NM_011459.4	<i>Serpinb8</i>	-1.67	3.18
70	NM_026038.2	<i>2810055F11Rik</i>	-1.66	3.17
71	NM_023850.2	<i>Chst1</i>	-1.66	3.15
72	NM_001168492.1	<i>Pdcd4</i>	-1.66	3.15
73	NM_001163761.1	<i>6430548M08Rik</i>	-1.65	3.13
74	NM_011243.1	<i>Rarb</i>	-1.64	3.12
75	NM_001145832.1	<i>Kifc3</i>	-1.64	3.11
76	NM_009183.2	<i>St8sia4</i>	-1.64	3.11

77	NM_009079.2	<i>Rpl22</i>	-1.63	3.10
78	NM_010255.3	<i>Gamt</i>	-1.63	3.10
79	NM_146208.2	<i>Neil3</i>	-1.63	3.10
80	NM_017391.3	<i>Slc5a3</i>	-1.61	3.06
81	NM_008628.2	<i>Msh2</i>	-1.61	3.05
82	NM_153571.2	<i>Hscb</i>	-1.61	3.05
83	NM_009806.2	<i>Cask</i>	-1.60	3.04
84	NM_134042.2	<i>Aldh6a1</i>	-1.59	3.02
85	NM_009029.2	<i>Rb1</i>	-1.58	3.00
86	NM_145402.3	<i>Tmem51</i>	-1.58	2.99
87	NM_172560.3	<i>Cntrob</i>	-1.57	2.98
88	NM_197990.3	<i>I700025G04Rik</i>	-1.57	2.98
89	NM_026720.2	<i>Ankrd13d</i>	-1.57	2.97
90	NM_008021.4	<i>Foxm1</i>	-1.57	2.97
91	NM_001242424.1	<i>Fam105a</i>	-1.57	2.97
92	NM_027543.3	<i>Gpr173</i>	-1.57	2.96
93	NM_028149.1	<i>Fbxl20</i>	-1.57	2.96
94	NM_013769.2	<i>Tjp3</i>	-1.56	2.95
95	NM_001081241.2	<i>Fam65a</i>	-1.55	2.94
96	NR_027827.1	<i>A030009H04Rik</i>	-1.55	2.93
97	NM_027480.3	<i>Ankrd24</i>	-1.55	2.92
98	NM_008317.4	<i>Hyal1</i>	-1.54	2.91
99	NM_001013377.2	<i>E130306D19Rik</i>	-1.54	2.91
100	NM_001037134.1	<i>Ccne2</i>	-1.54	2.91
101	NM_023733.3	<i>Crot</i>	-1.53	2.88
102	NM_027715.1	<i>Otud1</i>	-1.52	2.87
103	NM_001163764.1	<i>Tcf19</i>	-1.52	2.86
104	NM_013627.5	<i>Pax6</i>	-1.51	2.85
105	NM_201239.3	<i>Rnase4</i>	-1.51	2.85
106	NM_001164101.1	<i>Add3</i>	-1.51	2.85
107	NM_011391.1	<i>Slc16a7</i>	-1.51	2.84
108	NM_001042653.1	<i>Oip5</i>	-1.51	2.84
109	NM_176837.2	<i>Arhgap18</i>	-1.51	2.84
110	NM_029766.2	<i>Dtl</i>	-1.50	2.83
111	NM_024459.2	<i>Ppp3r1</i>	-1.50	2.82
112	NM_001004164.2	<i>Gnptab</i>	-1.50	2.82



113	NM_001177544.1	<i>Hist1h2ao</i>	-1.49	2.80
114	NM_026662.4	<i>Prps2</i>	-1.48	2.80
115	NM_008845.4	<i>Pip4k2a</i>	-1.48	2.79
116	NM_146073.3	<i>Zdhhc14</i>	-1.48	2.79
117	NM_030087.2	<i>Ndufv3</i>	-1.47	2.78
118	NM_031182.2	<i>Tfap4</i>	-1.47	2.78
119	NM_001163766.1	<i>Wdr90</i>	-1.47	2.76
120	NR_033402.1	<i>Tyms</i>	-1.46	2.75
121	NM_007525.3	<i>Bard1</i>	-1.46	2.74
122	NM_178061.5	<i>Mob3b</i>	-1.46	2.74
123	NM_026321.4	<i>Fam174a</i>	-1.45	2.74
124	NM_139145.4	<i>Hlcs</i>	-1.45	2.74
125	NM_025995.2	<i>Fbxo5</i>	-1.45	2.74
126	NM_026975.2	<i>Bola1</i>	-1.45	2.74
127	NM_177124.4	<i>Tnrc6b</i>	-1.45	2.74

**Table S3. The differentially expressed genes between LPS-treated and untreated shDab2-B cells (DL/DC)**

No.	GenBank accession no.	Gene Symbol	Log <sub>2</sub> Ratio	Fold Change
<b>Up-regulated genes</b>				
1	NM_009971.1	<i>Csf3</i>	8.53	369.74
2	NM_008361.3	<i>Il1b</i>	7.7	207.62
3	NM_008392.1	<i>Irg1</i>	6.23	74.94
4	NM_025404.3	<i>Arl4d</i>	6.19	73.18
5	NM_007707.3	<i>Socs3</i>	6.03	65.5
6	NM_009140.2	<i>Cxcl2</i>	5.79	55.22
7	NM_177371.3	<i>Tnfsf15</i>	5.77	54.76
8	NM_011198.3	<i>Ptgs2</i>	5.15	35.42
9	NM_008230.5	<i>Hdc</i>	4.99	31.72
10	NM_013599.2	<i>Mmp9</i>	4.91	30.02
11	NM_011610.3	<i>Tnfrsf1b</i>	4.84	28.67
12	NM_001044384.1	<i>Timp1</i>	4.81	28.11
13	NM_008321.2	<i>Id3</i>	4.64	24.88
14	NM_001039701.3	<i>Il1rn</i>	4.52	23
15	NM_007836.1	<i>Gadd45a</i>	4.32	20.03
16	NM_017466.4	<i>Ccl2</i>	4.28	19.47
17	NM_021384.4	<i>Rsad2</i>	4.24	18.9
18	NM_011113.3	<i>Plaur</i>	4.2	18.33
19	NM_010259.2	<i>Gbp1</i>	4.18	18.12
20	NM_009396.2	<i>Tnfaip2</i>	4.16	17.9
21	NR_033554.1	<i>D330041H03Rik</i>	4.11	17.3
22	NM_009895.3	<i>Cish</i>	4.03	16.33
23	NM_001077189.1	<i>Fcgr2b</i>	4.02	16.25
24	NM_013693.2	<i>Tnf</i>	4.01	16.07
25	NM_021394.2	<i>Zbp1</i>	4	15.99
26	NM_008655.1	<i>Gadd45b</i>	3.87	14.59
27	NM_001159395.1	<i>Nfkbiz</i>	3.83	14.21
28	NM_010187.2	<i>Fcgr2b</i>	3.82	14.13
29	NM_008655.1	<i>Gadd45b</i>	3.8	13.91
30	NM_030701.3	<i>Niacr1</i>	3.76	13.57
31	NM_023044.2	<i>Slc15a3</i>	3.76	13.53

32	NM_008331.3	<i>Ifit1</i>	3.74	13.39
33	NM_174850.3	<i>Micall2</i>	3.74	13.32
34	NM_030701.3	<i>Niacr1</i>	3.73	13.26
35	NM_021274.2	<i>Cxcl10</i>	3.67	12.71
36	NM_007987.2	<i>Fas</i>	3.66	12.65
37	NM_010484.2	<i>Slc6a4</i>	3.59	12.07
38	NM_015790.3	<i>Icosl</i>	3.5	11.34
39	NM_025541.3	<i>Asf1a</i>	3.47	11.11
40	NM_011333.3	<i>Ccl2</i>	3.47	11.09
41	NM_145636.1	<i>Il27</i>	3.42	10.68
42	NM_152804.2	<i>Plk2</i>	3.42	10.67
43	NM_053108.4	<i>Glrx</i>	3.36	10.28
44	NM_019777.3	<i>Ikbke</i>	3.32	10.01
45	NM_008842.3	<i>Pim1</i>	3.32	10
46	NM_134102.4	<i>Pla1a</i>	3.32	9.96
47	NM_207231.1	<i>Arl5c</i>	3.31	9.91
48	NM_010846.1	<i>Mxl1</i>	3.3	9.84
49	NM_009344.3	<i>Phlda1</i>	3.29	9.76
50	NM_009344.3	<i>Phlda1</i>	3.28	9.69
51	NM_010260.1	<i>Gbp2</i>	3.26	9.59
52	NM_026929.4	<i>Chac1</i>	3.26	9.59
53	NM_030720.1	<i>Gpr84</i>	3.26	9.58
54	NM_009397.3	<i>Tnfaip3</i>	3.24	9.47
55	NM_011607.3	<i>Tnc</i>	3.19	9.1
56	NM_153159.2	<i>Zc3h12a</i>	3.16	8.91
57	NM_001013365.2	<i>Osm</i>	3.15	8.85
58	NM_133662.2	<i>Ier3</i>	3.13	8.77
59	NM_172989.1	<i>Lpar1</i>	3.13	8.74
60	NM_019948.2	<i>Clec4e</i>	3.12	8.69
61	NM_001177982.1	<i>Pde4b</i>	3.12	8.67
62	NM_001113527.1	<i>Isg20</i>	3.11	8.66
63	NM_008871.2	<i>Serpine1</i>	3.11	8.66
64	NM_013807.2	<i>Plk3</i>	3.09	8.54
65	NM_178890.3	<i>Abtb2</i>	3.09	8.51
66	NM_008329.2	<i>Ifi204</i>	3.08	8.48
67	NM_009421.3	<i>Traf1</i>	3.08	8.48
68	NM_172833.2	<i>Malt1</i>	3.02	8.12

69	NM_013653.3	<i>Ccl5</i>	3.01	8.08
70	NM_009704.3	<i>Areg</i>	2.99	7.94
71	NM_175093.2	<i>Trib3</i>	2.99	7.92
72	NM_026985.1	<i>I810033B17Rik</i>	2.97	7.84
73	NM_010807.4	<i>Marcksl1</i>	2.96	7.8
74	NM_001005846.2	<i>Mcoln2</i>	2.96	7.77
75	NM_010090.2	<i>Dusp2</i>	2.89	7.39
76	NM_001048054.1	<i>Dusp16</i>	2.85	7.21
77	NM_001025606.1	<i>Tmem171</i>	2.82	7.08
78	NM_010577.3	<i>Itga5</i>	2.82	7.06
79	NM_001005858.3	<i>I830012O16Rik</i>	2.82	7.04
80	NM_007528.3	<i>Bcl6b</i>	2.78	6.85
81	NM_018734.3	<i>Gbp3</i>	2.75	6.75
82	NM_011756.4	<i>Zfp36</i>	2.74	6.66
83	NM_015783.3	<i>Isg15</i>	2.72	6.58
84	NM_008332.3	<i>Ifit2</i>	2.71	6.53
85	NM_001163591.1	<i>Stx11</i>	2.71	6.52
86	NM_026097.3	<i>Rffl</i>	2.68	6.42
87	NM_027871.1	<i>Arhgef3</i>	2.67	6.35
88	NM_011267.3	<i>Rgs16</i>	2.64	6.23
89	NM_011361.3	<i>Sgk1</i>	2.64	6.23
90	NM_025286.2	<i>Slc31a2</i>	2.64	6.22
91	NM_011227.1	<i>Rab20</i>	2.61	6.09
92	NM_009506.2	<i>Vegfc</i>	2.6	6.06
93	NM_009044.2	<i>Rel</i>	2.6	6.05
94	NM_010235.2	<i>Fosl1</i>	2.59	6.02
95	NM_011426.3	<i>Siglec1</i>	2.58	5.96
96	NM_008102.3	<i>Gch1</i>	2.57	5.95
97	NM_001025395.2	<i>Src</i>	2.57	5.94
98	NM_001048054.1	<i>Dusp16</i>	2.56	5.9
99	NM_011057.3	<i>Pdgfb</i>	2.54	5.82
100	NM_001002927.2	<i>Penk</i>	2.54	5.82
101	NM_001045526.2	<i>A430084P05Rik</i>	2.53	5.77
102	NM_026772.2	<i>Cdc42ep2</i>	2.5	5.65
103	NM_008714.3	<i>Notch1</i>	2.46	5.5
104	NM_001146161.1	<i>Slc11a2</i>	2.45	5.47
105	NM_029537.1	<i>Tmem98</i>	2.45	5.47

106	NM_007754.2	<i>Cpd</i>	2.45	5.46
107	NM_008416.3	<i>Junb</i>	2.42	5.37
108	NM_001164477.1	<i>Ifih1</i>	2.42	5.36
109	NM_001040397.4	<i>Filip1l</i>	2.41	5.31
110	NM_028800.3	<i>Stk40</i>	2.4	5.28
111	NM_134133.2	<i>2010002N04Rik</i>	2.39	5.25
112	NM_007498.3	<i>Atf3</i>	2.38	5.22
113	NM_133753.1	<i>Errfi1</i>	2.37	5.18
114	NM_011410.2	<i>Slfh4</i>	2.36	5.13
115	NM_001163591.1	<i>Stx11</i>	2.34	5.08
116	NM_001191008.1	<i>Sstr5</i>	2.34	5.07
117	NM_013612.2	<i>Slc11a1</i>	2.34	5.06
118	NM_009779.2	<i>C3ar1</i>	2.33	5.02
119	NM_011408.1	<i>Slfh2</i>	2.32	5
120	NM_008654.2	<i>Ppp1r15a</i>	2.32	4.99
121	NM_001164220.1	<i>Trim13</i>	2.31	4.97
122	NM_008348.2	<i>Il10ra</i>	2.3	4.93
123	NM_011854.2	<i>Oasl2</i>	2.28	4.84
124	NM_010119.5	<i>Ehd1</i>	2.26	4.78
125	NR_027888.1	<i>Sqrdl</i>	2.25	4.77
126	NM_010208.4	<i>Fgr</i>	2.25	4.76
127	XM_003084664.1	<i>Sh2d6</i>	2.25	4.76
128	NR_029565.1	<i>Mir155</i>	2.23	4.7
129	NM_001243039.1	<i>Gvin1</i>	2.23	4.68
130	NM_020557.4	<i>Cmpk2</i>	2.22	4.65
131	NM_183201.4	<i>Slfh5</i>	2.21	4.64
132	NM_026644.2	<i>Agpat4</i>	2.21	4.61
133	NM_001081180.1	<i>Spink5</i>	2.2	4.58
134	NM_001093766.1	<i>Myadm</i>	2.17	4.5
135	NM_010755.3	<i>Maff</i>	2.16	4.46
136	NM_028127.3	<i>Frmd6</i>	2.15	4.43
137	NM_008416.3	<i>Junb</i>	2.14	4.42
138	NM_013470.2	<i>Anxa3</i>	2.13	4.38
139	NM_023061.2	<i>Mcam</i>	2.13	4.38
140	NM_001142706.1	<i>Cfb</i>	2.13	4.37
141	NM_176913.3	<i>Dpep2</i>	2.11	4.31
142	NM_009132.2	<i>Scin</i>	2.11	4.31

143	NM_001082552.1	<i>Trim21</i>	2.09	4.26
144	NM_008132.2	<i>Glrp1</i>	2.08	4.22
145	NM_027494.3	<i>Zcchc8</i>	2.05	4.15
146	NM_001159301.1	<i>Lgals9</i>	2.05	4.15
147	NM_001145835.1	<i>Ralgds</i>	2.05	4.13
148	NM_001163565.1	<i>Ptpn5</i>	2.05	4.13
149	NM_001167680.1	<i>Rhbdf2</i>	2.03	4.07
150	NM_145953.2	<i>Cth</i>	2.02	4.06
151	NM_145209.3	<i>Oasl1</i>	2.02	4.05
152	NM_015789.3	<i>Dkk11</i>	2.01	4.03
153	NM_028807.3	<i>1200009I06Rik</i>	2.01	4.02
154	NM_028967.1	<i>Batf2</i>	1.99	3.98
155	NM_008327.2	<i>Ifi202b</i>	1.97	3.91
156	NM_013532.2	<i>Lilrb4</i>	1.97	3.91
157	NM_011338.2	<i>Ccl9</i>	1.97	3.91
158	XR_001627.2	<i>Gm8995</i>	1.96	3.88
159	NM_018807.5	<i>Plagl2</i>	1.95	3.86
160	NM_001045514.2	<i>Akna</i>	1.94	3.85
161	NM_011521.2	<i>Sdc4</i>	1.94	3.83
162	NM_207652.2	<i>Tsc22d1</i>	1.94	3.83
163	NM_019549.2	<i>Plek</i>	1.93	3.82
164	NM_008330.1	<i>Ifi47</i>	1.93	3.81
165	NM_015747.2	<i>Slc20a1</i>	1.93	3.8
166	NM_009288.2	<i>Stk10</i>	1.92	3.79
167	NM_008630.2	<i>Mt2</i>	1.91	3.77
168	NM_145828.3	<i>Xylt2</i>	1.91	3.76
169	NM_001004174.1	<i>AA467197</i>	1.91	3.76
170	NM_001099624.2	<i>Rapegf2</i>	1.91	3.75
171	NM_013673.3	<i>Sp100</i>	1.9	3.73
172	NR_003508.1	<i>Mx2</i>	1.9	3.73
173	NM_001164220.1	<i>Trim13</i>	1.9	3.73
174	NM_011777.2	<i>Zyx</i>	1.89	3.71
175	NM_177371.3	<i>Tnfsf15</i>	1.88	3.69
176	NM_001093766.1	<i>Myadm</i>	1.88	3.68
177	NM_013867.2	<i>Bcar3</i>	1.88	3.68
178	NM_028679.3	<i>Irak3</i>	1.86	3.63
179	NM_011400.3	<i>Slc2a1</i>	1.85	3.61

180	NM_025638.2	<i>Gdpd1</i>	1.85	3.6
181	NM_007413.4	<i>Adora2b</i>	1.85	3.6
182	NR_029806.1	<i>Mir221</i>	1.85	3.59
183	NM_175437.3	<i>Pion</i>	1.85	3.59
184	NM_023516.5	<i>Hilpda</i>	1.84	3.58
185	NM_011990.2	<i>Slc7a11</i>	1.83	3.57
186	NM_023380.2	<i>Samsn1</i>	1.83	3.56
187	NM_008102.3	<i>Gch1</i>	1.83	3.55
188	NM_007484.2	<i>Rhoc</i>	1.82	3.53
189	NM_030684.3	<i>Trim34a</i>	1.82	3.52
190	NM_023516.5	<i>Hilpda</i>	1.79	3.45
191	NM_018782.2	<i>Calcr1</i>	1.78	3.45
192	NM_011110.4	<i>Pla2g5</i>	1.78	3.44
193	NM_172603.3	<i>Phf1</i>	1.78	3.43
194	NM_011577.1	<i>Tgfb1</i>	1.78	3.43
195	NM_013652.2	<i>Ccl4</i>	1.78	3.43
196	NM_001199276.1	<i>Tnip1</i>	1.77	3.41
197	NM_009743.4	<i>Bcl2l1</i>	1.77	3.41
198	XM_003086779.1	<i>LOC100504934</i>	1.77	3.4
199	NM_001039530.3	<i>Parp14</i>	1.76	3.4
200	NM_001205044.1	<i>Jarid2</i>	1.76	3.38
201	NM_029083.2	<i>Ddit4</i>	1.76	3.38
202	NM_176933.4	<i>Dusp4</i>	1.76	3.38
203	NM_019738.1	<i>Nupr1</i>	1.75	3.37
204	NM_007729.2	<i>Col11a1</i>	1.75	3.36
205	NM_001199305.1	<i>Atxn1</i>	1.75	3.36
206	NM_001126047.1	<i>Sema4c</i>	1.75	3.36
207	NM_001172117.1	<i>Hck</i>	1.74	3.34
208	NM_001135657.1	<i>Ptprj</i>	1.72	3.3
209	NM_177794.3	<i>Tmem26</i>	1.72	3.3
210	NM_010499.4	<i>Ier2</i>	1.71	3.28
211	NM_032000.2	<i>Trps1</i>	1.71	3.27
212	NM_028186.4	<i>Nkd2</i>	1.71	3.27
213	NM_153074.3	<i>Lrrc25</i>	1.7	3.25
214	NM_144797.3	<i>Metrn1</i>	1.7	3.25
215	NM_001162883.1	<i>Apol9</i>	1.7	3.25
216	NM_001048177.1	<i>Jak2</i>	1.7	3.24

217	NM_001199733.1	<i>Daxx</i>	1.7	3.24
218	NM_018738.4	<i>Igtp</i>	1.69	3.23
219	NM_053244.5	<i>Kiss1r</i>	1.68	3.21
220	NM_007392.2	<i>Acta2</i>	1.66	3.16
221	NM_019549.2	<i>Plek</i>	1.65	3.14
222	NM_183148.3	<i>Iffo2</i>	1.64	3.12
223	NM_010442.2	<i>Hmox1</i>	1.64	3.11
224	NM_138953.2	<i>Ell2</i>	1.64	3.11
225	NM_172145.3	<i>Fam176b</i>	1.63	3.11
226	NM_008326.1	<i>Irgm1</i>	1.63	3.1
227	NM_011018.2	<i>Sqstm1</i>	1.63	3.1
228	NR_015466.1	<i>7530420F21Rik</i>	1.63	3.1
229	NM_013671.3	<i>Sod2</i>	1.62	3.07
230	NM_199241.2,	<i>Sema6d</i>	1.61	3.05
231	NM_011731.3	<i>Slc6a20b</i>	1.58	2.99
232	NM_010908.4	<i>Nfkbib</i>	1.58	2.98
233	XR_140714.1	<i>Gm9640</i>	1.57	2.98
234	NM_010720.3	<i>Lipg</i>	1.55	2.94
235	NM_172442.3	<i>Dtx4</i>	1.55	2.92
236	NM_021334.2	<i>Itgax</i>	1.54	2.91
237	NM_010495.2	<i>Id1</i>	1.54	2.91
238	NM_001037298.1	<i>Fam38a</i>	1.53	2.89
239	NM_019440.3	<i>Irgm2</i>	1.52	2.87
240	NM_010499.4	<i>Ier2</i>	1.52	2.86
241	NM_026835.2	<i>Ms4a6d</i>	1.52	2.86
242	NM_001177370.1	<i>Nfkb2</i>	1.51	2.85
243	NM_001160379.1	<i>Fam46a</i>	1.5	2.83
244	NM_029478.3	<i>Vmp1</i>	1.5	2.83
245	NR_015566.2	<i>A330023F24Rik</i>	1.5	2.82
246	NM_001160379.1	<i>Fam46a</i>	1.5	2.82
247	NM_022331.1	<i>Herpud1</i>	1.5	2.82
248	NM_001162921.1	<i>Zc3h12c</i>	1.49	2.82
249	NM_175512.2	<i>Dhrs9</i>	1.49	2.82
250	XM_001477846.2	<i>Rnf213</i>	1.49	2.81
251	NM_153543.2	<i>Aldh1l2</i>	1.49	2.81
252	NM_017373.3	<i>Nfil3</i>	1.49	2.8
253	NM_145950.4	<i>Osgin2</i>	1.48	2.8



254	NM_001252601.1	<i>Irf7</i>	1.48	2.79
255	NM_025821.2	<i>Carhsp1</i>	1.48	2.79
256	NM_001040400.2	<i>Tet2</i>	1.48	2.79
257	NM_009627.1	<i>Adm</i>	1.48	2.79
258	NR_028478.1	<i>Snora75</i>	1.47	2.78
259	NM_001163556.1	<i>Pou2f2</i>	1.46	2.76
260	NM_011212.3	<i>Ptpre</i>	1.46	2.75
261	NM_001163470.1	<i>Traf1</i>	1.46	2.75
262	NM_080844.4	<i>Serpinc1</i>	1.45	2.74
263	NM_183162.2	<i>BC006779</i>	1.45	2.74
264	NM_172684.2	<i>Rsb1</i>	1.45	2.73
265	NM_018861.3	<i>Slc1a4</i>	1.45	2.73
266	NM_007679.4	<i>Cebpd</i>	1.45	2.72
<b>Down-regulated genes</b>				
1	NM_001252506.1	<i>St6gal1</i>	-6.05	66.27
2	NM_029116.2	<i>Kbtbd11</i>	-4.47	22.17
3	NM_007642.4	<i>Cd28</i>	-4.39	20.9
4	NM_001081656.2	<i>Neurl1b</i>	-4.23	18.79
5	NM_025768.2	<i>Grtp1</i>	-4.13	17.54
6	NM_022886.2	<i>Scel</i>	-4.12	17.37
7	NM_144879.2	<i>Vash2</i>	-4.07	16.76
8	NM_020581.2	<i>Angpt4</i>	-3.96	15.6
9	NM_027543.3	<i>Gpr173</i>	-3.95	15.48
10	NM_007426.3	<i>Angpt2</i>	-3.9	14.92
11	NM_198024.1	<i>Ranbp3l</i>	-3.84	14.3
12	NM_145611.4	<i>Kank2</i>	-3.72	13.17
13	NM_024124.3	<i>Hdac9</i>	-3.71	13.05
14	NM_008278.2	<i>Hpgd</i>	-3.62	12.26
15	NM_198024.1	<i>Ranbp3l</i>	-3.58	11.96
16	NM_011459.4	<i>Serpinb8</i>	-3.56	11.77
17	NM_001167592.2	<i>Gm17365</i>	-3.5	11.32
18	NM_001004156.2	<i>Plekhg5</i>	-3.47	11.1
19	NM_023850.2	<i>Chst1</i>	-3.45	10.96
20	NM_001130186.1	<i>Phf17</i>	-3.39	10.51
21	NM_011027.2	<i>P2rx7</i>	-3.38	10.38
22	XM_003689164.1	<i>LOC100504500</i>	-3.37	10.31
23	NM_177000.3	<i>C130050O18Rik</i>	-3.34	10.13

24	NM_008278.2	<i>Hpgd</i>	-3.31	9.94
25	NM_017480.2	<i>Icos</i>	-3.31	9.89
26	NM_028340.	<i>Susd3</i>	-3.3	9.88
27	NM_001143777.1	<i>Fam13c</i>	-3.28	9.72
28	NM_001170643.1	<i>Rnf144b</i>	-3.25	9.54
29	NM_028039.2	<i>Esco2</i>	-3.24	9.46
30	NM_178667.4	<i>Tfdp2</i>	-3.19	9.12
31	NM_028149.1	<i>Fbxl20</i>	-3.16	8.97
32	NM_001163616.1	<i>1810011H11Rik</i>	-3.13	8.77
33	NM_009025.2	<i>Rasa3</i>	-3.09	8.54
34	NM_178699.4	<i>B930041F14Rik</i>	-3.08	8.48
35	NM_001195006.1	<i>Ndrp4</i>	-3.08	8.46
36	NM_001168492.1	<i>Pdcd4</i>	-3.08	8.46
37	NM_013627.5	<i>Pax6</i>	-3.08	8.45
38	NM_053261.2	<i>Impa2</i>	-3.06	8.34
39	NM_011243.1	<i>Rarb</i>	-3.06	8.33
40	NM_001039231.3	<i>Zfp951</i>	-3.05	8.3
41	NM_001204241.1	<i>Clec4a3</i>	-3.04	8.24
42	NM_001162425.1	<i>Efnal</i>	-3.04	8.2
43	NM_001081098.1	<i>Zfp362</i>	-3.03	8.16
44	NM_013495.2	<i>Cpt1a</i>	-3.02	8.11
45	NM_001168491.1	<i>Pdcd4</i>	-2.97	7.84
46	NM_133746.5	<i>Calhm2</i>	-2.97	7.81
47	NM_001081079.1	<i>Ogfrl1</i>	-2.96	7.78
48	NM_027763.1	<i>Trem11</i>	-2.95	7.74
49	NM_001199105.1	<i>Trp53inp1</i>	-2.94	7.67
50	NM_001114312.1	<i>4930506M07Rik</i>	-2.94	7.67
51	NM_001037134.1	<i>Ccne2</i>	-2.93	7.64
52	NM_025294.5	<i>Gm16515</i>	-2.92	7.55
53	NM_001190950.1	<i>Kcne3</i>	-2.9	7.46
54	NM_146208.2	<i>Neil3</i>	-2.9	7.46
55	NM_025995.2	<i>Fbxo5</i>	-2.88	7.38
56	NM_001013368.5	<i>E2f8</i>	-2.87	7.31
57	NM_030198.3	<i>Gins3</i>	-2.87	7.31
58	NM_018822.3	<i>Sgsh</i>	-2.87	7.3
59	NM_001013377.2	<i>E130306D19Rik</i>	-2.87	7.29
60	NM_145434.3	<i>Nr1d1</i>	-2.86	7.26

61	NM_009846.2	<i>Cd24a</i>	-2.85	7.22
62	NM_001163256.1	<i>Fblim1</i>	-2.85	7.2
63	NM_007930.4	<i>Enc1</i>	-2.84	7.18
64	NM_017391.3	<i>Slc5a3</i>	-2.83	7.12
65	NM_001145959.1	<i>Ndrp2</i>	-2.82	7.05
66	NM_134189.2	<i>Galnt10</i>	-2.82	7.05
67	NM_133898.4	<i>N4bp2l1</i>	-2.81	7.02
68	NM_172756.2	<i>Ankle1</i>	-2.8	6.98
69	NM_001130412.1	<i>Lpin1</i>	-2.8	6.95
70	XR_106143.1	<i>G430095P16Rik</i>	-2.79	6.93
71	NM_172598.3	<i>Wdhd1</i>	-2.79	6.89
72	NM_153388.4	<i>Lrfr4</i>	-2.78	6.86
73	NM_183031.2	<i>Gpr183</i>	-2.77	6.83
74	NM_145462.2	<i>Haus4</i>	-2.77	6.81
75	NM_028763.3	<i>Cbx6</i>	-2.76	6.78
76	NM_138313.3	<i>Bmf</i>	-2.75	6.72
77	NM_026038.2	<i>2810055F11Rik</i>	-2.75	6.71
78	NM_028995.3	<i>Nipal3</i>	-2.74	6.68
79	NM_001145832.1	<i>Kifc3</i>	-2.74	6.68
80	NM_146040.1	<i>Cdca7l</i>	-2.73	6.62
81	NM_001113283.1	<i>BC031353</i>	-2.71	6.56
82	NM_176837.2	<i>Arhgap18</i>	-2.71	6.55
83	NM_001170643.1	<i>Rnf144b</i>	-2.71	6.55
84	NM_009806.2	<i>Cask</i>	-2.7	6.52
85	NM_001163687.1	<i>Naaa</i>	-2.69	6.47
86	NM_001080158.1	<i>Cenpm</i>	-2.68	6.41
87	NM_010049.3	<i>Dhfr</i>	-2.67	6.38
88	NM_198861.1	<i>BC046404</i>	-2.67	6.37
89	NM_177603.3	<i>Frat2</i>	-2.66	6.32
90	NM_010412.3	<i>Hdac5</i>	-2.66	6.32
91	NM_001085410.1	<i>1110020G09Rik</i>	-2.66	6.31
92	NM_001005421.4	<i>Amical</i>	-2.65	6.26
93	NM_178220.3	<i>Arrb1</i>	-2.64	6.23
94	NM_023794.2	<i>Etv5</i>	-2.64	6.23
95	NM_145402.3	<i>Tmem51</i>	-2.63	6.19
96	NM_197990.3	<i>1700025G04Rik</i>	-2.62	6.15
97	NM_001033306.1	<i>Shb</i>	-2.62	6.14

98	NM_177733.6	<i>E2f2</i>	-2.61	6.12
99	NM_009001.6	<i>Rab3a</i>	-2.61	6.12
100	NM_001164112.1	<i>Nfatc1</i>	-2.61	6.1
101	NM_020567.2	<i>Gmnn</i>	-2.61	6.09
102	NM_198305.2	<i>Klhl17</i>	-2.6	6.07
103	NM_009593.2	<i>Abcg1</i>	-2.6	6.04
104	NM_153571.2	<i>Hscb</i>	-2.59	6.02
105	NM_001114312.1	<i>4930506M07Rik</i>	-2.59	6.02
106	NM_023397.4	<i>Mdp1</i>	-2.58	5.98
107	NM_023326.2	<i>Bmyc</i>	-2.57	5.92
108	NM_001164101.1	<i>Add3</i>	-2.56	5.91
109	NM_024459.2	<i>Ppp3r1</i>	-2.56	5.9
110	NM_008628.2	<i>Msh2</i>	-2.56	5.89
111	NM_025464.2	<i>Tmem218</i>	-2.54	5.81
112	NM_173047.3	<i>Cbr3</i>	-2.53	5.77
113	NM_001085492.1	<i>Rere</i>	-2.53	5.77
114	NM_030198.3	<i>Gins3</i>	-2.52	5.72
115	NM_145425.3	<i>Wdpcp</i>	-2.51	5.71
116	NR_027827.1	<i>A030009H04Rik</i>	-2.5	5.67
117	NM_027973.3	<i>Mlf1ip</i>	-2.49	5.61
118	NM_009079.2	<i>Rpl22</i>	-2.48	5.59
119	NM_001242424.1	<i>Fam105a</i>	-2.47	5.53
120	NM_007525.3	<i>Bard1</i>	-2.46	5.5
121	NM_023733.3	<i>Crot</i>	-2.44	5.44
122	NM_146073.3	<i>Zdhhc14</i>	-2.44	5.44
123	NM_009154.2	<i>Sema5a</i>	-2.43	5.38
124	NM_172838.3	<i>Slc16a12</i>	-2.42	5.37
125	NM_181397.2	<i>Rftn1</i>	-2.42	5.35
126	NM_178609.4	<i>E2f7</i>	-2.42	5.34
127	NM_001115018.1	<i>Suv420h2</i>	-2.42	5.34
128	NM_001163766.1	<i>Wdr90</i>	-2.41	5.33
129	NM_029091.2	<i>Klc4</i>	-2.41	5.32
130	NM_028639.3	<i>Ttc7</i>	-2.41	5.3
131	NM_134126.3	<i>Ift140</i>	-2.4	5.29
132	NM_001163764.1	<i>Tcf19</i>	-2.39	5.24
133	NM_011391.1	<i>Slc16a7</i>	-2.39	5.24
134	NM_001033162.2	<i>1700012A16Rik</i>	-2.38	5.22

135	NR_033402.1	<i>Tyms</i>	-2.38	5.21
136	NM_183031.2	<i>Gpr183</i>	-2.38	5.2
137	NM_001013370.2,	<i>Sesn1</i>	-2.37	5.17
138	NM_009662.2	<i>Alox5</i>	-2.36	5.14
139	NM_176831.4	<i>Ppcdc</i>	-2.36	5.14
140	NM_023431.5	<i>Mum1</i>	-2.36	5.13
141	NM_153546.4	<i>Mboat1</i>	-2.35	5.11
142	NM_145823.2	<i>Pitpnc1</i>	-2.35	5.11
143	NM_001146176.1	<i>Max</i>	-2.35	5.08
144	NM_172560.3	<i>Cntrob</i>	-2.34	5.06
145	NM_028995.3	<i>Nipal3</i>	-2.34	5.05
146	NM_178283.3	<i>Asb13</i>	-2.32	5
147	NM_021476.4	<i>Cysltrl</i>	-2.32	4.99
148	NM_001159538.1	<i>Fgd2</i>	-2.31	4.96
149	NM_026410.3	<i>Cdca5</i>	-2.31	4.95
150	NM_146008.2	<i>Tcp11l2</i>	-2.3	4.93
151	NM_009828.2	<i>Ccna2</i>	-2.3	4.93
152	NM_025823.4	<i>Pcyox1</i>	-2.3	4.92
153	NM_134250.2	<i>Havcr2</i>	-2.29	4.9
154	NM_001163761.1	<i>6430548M08Rik</i>	-2.29	4.9
155	NM_001163518.1	<i>2410075B13Rik</i>	-2.29	4.9
156	NM_198019.2	<i>Cep78</i>	-2.29	4.89
157	NM_016681.3	<i>Chek2</i>	-2.27	4.84
158	NM_133762.3	<i>Ncapg2</i>	-2.27	4.83
159	NM_019976.3	<i>Psrl1</i>	-2.27	4.82
160	NM_026720.2	<i>Ankrd13d</i>	-2.27	4.81
161	NR_040293.1	<i>2310040G24Rik</i>	-2.26	4.8
162	NM_008737.2	<i>Nrp1</i>	-2.26	4.8
163	NM_139145.4	<i>Hlcs</i>	-2.26	4.8
164	NM_172310.2	<i>Tarsl2</i>	-2.26	4.8
165	NM_001081415.1	<i>Samd1</i>	-2.26	4.79
166	NM_009029.2	<i>Rb1</i>	-2.26	4.78
167	NM_025341.3	<i>Abhd6</i>	-2.26	4.78
168	NM_024264.4	<i>Cyp27a1</i>	-2.25	4.76
169	NM_026662.4	<i>Prps2</i>	-2.25	4.76
170	NM_001081241.2	<i>Fam65a</i>	-2.25	4.75
171	NM_178677.4	<i>Sec22c</i>	-2.25	4.75

172	NM_025341.3	<i>Abhd6</i>	-2.24	4.72
173	NM_028232.2	<i>Sgoll</i>	-2.23	4.7
174	NM_001146180.1	<i>Mtss1</i>	-2.23	4.69
175	NR_030721.1	<i>9130206I24Rik</i>	-2.23	4.69
176	NM_010255.3	<i>Gamt</i>	-2.23	4.68
177	NM_009427.2	<i>Tob1</i>	-2.21	4.63
178	NM_008021.4	<i>Foxm1</i>	-2.21	4.63
179	NM_028576.2	<i>1700106N22Rik</i>	-2.21	4.63
180	NM_029766.2	<i>Dtl</i>	-2.21	4.61
181	NM_024208.4	<i>Echdc3</i>	-2.2	4.61
182	NM_172260.3	<i>Cep68</i>	-2.2	4.61
183	NM_001001806.2	<i>Zfp36l2</i>	-2.2	4.6
184	NR_015585.1	<i>4933439C10Rik</i>	-2.19	4.58
185	NM_010830.2	<i>Msh6</i>	-2.19	4.58
186	NM_138956.3	<i>Rassf3</i>	-2.19	4.57
187	NM_007421.2	<i>Adssl1</i>	-2.19	4.57
188	NM_144526.3	<i>Fam64a</i>	-2.19	4.55
189	NM_177124.4	<i>Tnrc6b</i>	-2.18	4.53
190	NM_177473.3	<i>Tmem191c</i>	-2.18	4.53
191	NM_181039.2	<i>Lphn1</i>	-2.18	4.53
192	NM_175383.2	<i>B3gnt1</i>	-2.18	4.52
193	NM_019455.4	<i>Hpgds</i>	-2.17	4.51
194	NM_021886.1	<i>Cenph</i>	-2.17	4.5
195	NM_029482.1	<i>4930579G24Rik</i>	-2.17	4.5
196	NM_013926.1	<i>Cbx8</i>	-2.17	4.49
197	NM_013788.2	<i>Peg12</i>	-2.17	4.49
198	NM_201239.3	<i>Rnase4</i>	-2.16	4.47
199	NM_010620.1	<i>Kif15</i>	-2.15	4.44
200	NM_001170537.1	<i>Mef2c</i>	-2.15	4.43
201	NM_175449.4	<i>Fam26f</i>	-2.15	4.43
202	NM_007633.2	<i>Ccne1</i>	-2.15	4.43
203	NM_001033352.3	<i>Klhl21</i>	-2.15	4.43
204	NM_001170556.1	<i>Prkag2</i>	-2.14	4.42
205	NM_173733.3	<i>Suox</i>	-2.14	4.41
206	NM_009791.4	<i>Aspm</i>	-2.13	4.38
207	NM_013750.2	<i>Phlda3</i>	-2.13	4.37
208	NM_026967.4	<i>Rhebl1</i>	-2.12	4.35

209	NM_001177544.1	<i>Hist1h2ao</i>	-2.12	4.33
210	NM_001005420.1	<i>Ppp1r26</i>	-2.11	4.32
211	NM_026875.2	<i>Ypel3</i>	-2.11	4.31
212	NM_028543.3	<i>Zfp763</i>	-2.11	4.31
213	NM_175384.4	<i>Cdca2</i>	-2.11	4.3
214	NM_175554.4	<i>Clspn</i>	-2.1	4.3
215	NM_178607.4	<i>Rnf24</i>	-2.1	4.28
216	NM_177620.4	<i>Rin3</i>	-2.09	4.26
217	NM_010424.4	<i>Hfe</i>	-2.09	4.26
218	NM_008317.4	<i>Hyal1</i>	-2.08	4.24
219	NM_172734.3	<i>Stk38l</i>	-2.08	4.24
220	NM_144538.2	<i>Rab3il1</i>	-2.08	4.23
221	NM_008652.2	<i>Mybl2</i>	-2.08	4.23
222	NM_001033142.2	<i>Rnf166</i>	-2.07	4.21
223	NM_010188.5	<i>Fcgr3</i>	-2.07	4.21
224	NM_178694.3	<i>Zer1</i>	-2.07	4.19
225	NM_138719.4	<i>Gnb5</i>	-2.07	4.19
226	NM_031257.3	<i>Plekha2</i>	-2.06	4.18
227	NM_028083.4	<i>Chaf1b</i>	-2.06	4.18
228	NM_178214.3	<i>Hist2h2be</i>	-2.06	4.18
229	NM_134050.4	<i>Rab15</i>	-2.06	4.16
230	NM_134122.2	<i>Nrm</i>	-2.05	4.13
231	NM_026436.3	<i>Tmem86a</i>	-2.04	4.13
232	NM_030234.2	<i>Wdr76</i>	-2.04	4.11
233	NM_178162.2	<i>Agfg2</i>	-2.04	4.1
234	NM_026166.2	<i>Ikbip</i>	-2.04	4.1
235	NM_012012.4	<i>Exo1</i>	-2.03	4.1
236	NM_008832.2	<i>Phka1</i>	-2.03	4.1
237	NM_001191044.1	<i>Ddx43</i>	-2.03	4.09
238	NM_009387.2	<i>Tk1</i>	-2.03	4.09
239	NR_015522.1	<i>2810429I04Rik</i>	-2.03	4.08
240	NM_001111080.1	<i>Uhrf1</i>	-2.03	4.08
241	NM_175347.4	<i>Srl</i>	-2.03	4.08
242	NM_030721.2	<i>Acox3</i>	-2.03	4.07
243	NM_001167994.1	<i>Trmt2b</i>	-2.03	4.07
244	NM_008253.3	<i>Hmgb3</i>	-2.02	4.05
245	NM_175511.4	<i>Fam78a</i>	-2.01	4.03

246	NM_027534.2	<i>Kdsr</i>	-2.01	4.03
247	NM_198642.2	<i>5031414D18Rik</i>	-2.01	4.02
248	NM_026003.2	<i>Smarca2</i>	-2	4.01
249	NM_134041.3	<i>4930427A07Rik</i>	-2	3.99
250	NM_015810.2	<i>Polg2</i>	-2	3.99
251	NM_001109993.1	<i>Tmem141</i>	-1.99	3.98
252	NM_007634.4	<i>Ccnf</i>	-1.99	3.98
253	NM_145564.3	<i>Fbxo21</i>	-1.99	3.97
254	NM_027975.2	<i>Fam83d</i>	-1.99	3.96
255	NM_001033484.1	<i>Iqgap3</i>	-1.99	3.96
256	NM_133669.4	<i>Rp2h</i>	-1.98	3.95
257	NM_001113574.1	<i>Brd3</i>	-1.98	3.94
258	NM_010580.2	<i>Itgb5</i>	-1.98	3.94
259	NM_025998.3	<i>Nkain1</i>	-1.98	3.94
260	NM_020271.3	<i>Pdcp</i>	-1.98	3.94
261	NM_130895.3	<i>Adarb1</i>	-1.98	3.94
262	NM_008567.1	<i>Mcm6</i>	-1.98	3.94
263	NM_007705.2	<i>Cirbp</i>	-1.98	3.94
264	NM_010559.2	<i>Il6ra</i>	-1.98	3.93
265	NM_197943.2	<i>Sgsm2</i>	-1.97	3.93
266	NM_001013026.2	<i>Ttf2</i>	-1.97	3.92
267	NM_177372.3	<i>Dna2</i>	-1.97	3.91
268	NM_023229.2	<i>Fastk</i>	-1.96	3.9
269	NM_001199213.1	<i>Serpnb12</i>	-1.96	3.89
270	NM_198299.1	<i>E130303B06Rik</i>	-1.96	3.88
271	NM_027106.4	<i>Avp1l</i>	-1.96	3.88
272	NM_016974.3	<i>Dbp</i>	-1.95	3.87
273	NM_008618.3	<i>Mdh1</i>	-1.95	3.87
274	NM_010637.3	<i>Klf4</i>	-1.95	3.86
275	NM_001199124.1	<i>Spc25</i>	-1.95	3.85
276	NM_177583.4	<i>Aph1b</i>	-1.94	3.84
277	NM_028657.3	<i>F630110N24Rik</i>	-1.94	3.84
278	NM_009104.2	<i>Rrm2</i>	-1.94	3.84
279	NM_031182.2	<i>Tfap4</i>	-1.93	3.82
280	NM_001177867.1	<i>Sgol2</i>	-1.93	3.82
281	NM_013770.2	<i>Slc25a10</i>	-1.93	3.82
282	NM_173437.2	<i>Nav1</i>	-1.93	3.82



283	NM_178856.1	<i>Gins2</i>	-1.93	3.81
284	NM_207204.2	<i>Ninl</i>	-1.93	3.81
285	NM_010830.2	<i>Msh6</i>	-1.93	3.8
286	NM_025857.2	<i>Aagab</i>	-1.93	3.8
287	NM_145509.2	<i>5430435G22Rik</i>	-1.92	3.79
288	NM_178214.3	<i>Hist2h2be</i>	-1.92	3.79
289	NM_008695.2	<i>Nid2</i>	-1.92	3.79
290	NM_008323.1	<i>Idh3g</i>	-1.92	3.78
291	NM_009183.2	<i>St8sia4</i>	-1.92	3.78
292	NM_001130412.1	<i>Lpin1</i>	-1.91	3.77
293	NM_001033311.3	<i>Vsig10</i>	-1.91	3.76
294	NM_133345.2	<i>Ing4</i>	-1.91	3.75
295	NM_010313.1	<i>Gnb5</i>	-1.91	3.75
296	NM_172443.3	<i>Tbc1d16</i>	-1.91	3.75
297	NM_029467.3	<i>Tcam1</i>	-1.9	3.74
298	NM_011861.2	<i>Pacsin1</i>	-1.9	3.74
299	NM_007435.1	<i>Abcd1</i>	-1.9	3.73
300	NM_009734.3	<i>Azil</i>	-1.9	3.73
301	NM_007956.4	<i>Esr1</i>	-1.89	3.71
302	NM_144915.3	<i>Daglb</i>	-1.89	3.71
303	NM_008921.2	<i>Prim1</i>	-1.89	3.71
304	NM_011416.2	<i>Smarca2</i>	-1.89	3.71
305	NM_022654.1	<i>Lrdd</i>	-1.89	3.71
306	NM_021790.1	<i>Cenpk</i>	-1.89	3.7
307	NM_025495.3	<i>Cenpp</i>	-1.89	3.69
308	NM_025377.3	<i>Fam33a</i>	-1.88	3.69
309	NM_001012517.4	<i>Fut10</i>	-1.88	3.67
310	NM_172903.4	<i>Man2a2</i>	-1.88	3.67
311	NM_001163488.1	<i>Pfkm</i>	-1.88	3.67
312	NM_008521.1	<i>Ltc4s</i>	-1.87	3.67
313	NM_025512.2	<i>Zfand1</i>	-1.87	3.66
314	NM_008845.4	<i>Pip4k2a</i>	-1.87	3.66
315	NM_178694.3	<i>Zer1</i>	-1.87	3.66
316	NM_011133.2	<i>Pole2</i>	-1.87	3.66
317	NM_001199433.1	<i>Dnmt1</i>	-1.87	3.66
318	NM_031392.2	<i>Wdr6</i>	-1.87	3.65
319	NM_028603.4	<i>Zbtb8a</i>	-1.87	3.65

320	NM_029249.2	<i>4930547N16Rik</i>	-1.87	3.65
321	NM_027560.1	<i>Arrdc2</i>	-1.87	3.65
322	NM_028651.2	<i>Tmtc4</i>	-1.87	3.65
323	NM_133249.2	<i>Ppargc1b</i>	-1.87	3.65
324	NM_145142.2	<i>Chst10</i>	-1.86	3.64
325	NM_001081237.1	<i>Klhdc5</i>	-1.86	3.63
326	NM_001039000.4	<i>Kif5a</i>	-1.86	3.63
327	NM_145924.2	<i>Cenpi</i>	-1.86	3.63
328	NM_030717.1	<i>Lactb</i>	-1.86	3.62
329	NM_133765.4	<i>Fbxo31</i>	-1.86	3.62
330	NM_026418.2	<i>Rgs10</i>	-1.86	3.62
331	NM_145475.4	<i>Cerk</i>	-1.85	3.61
332	NM_001010833.2	<i>Mdc1</i>	-1.85	3.61
333	NM_178061.5	<i>Mob3b</i>	-1.85	3.6
334	NM_177327.3	<i>Wwp1</i>	-1.85	3.6
335	NM_001081076.2	<i>Gucy2g</i>	-1.85	3.59
336	NM_022882.4	<i>Lpin2</i>	-1.84	3.59
337	NM_001142647.1	<i>Tmem194b</i>	-1.84	3.58
338	NR_030718.1	<i>F630028O10Rik</i>	-1.84	3.58
339	NM_001081433.3	<i>Ankrd44</i>	-1.84	3.58
340	NM_020022.2	<i>Rfc2</i>	-1.84	3.58
341	NM_010455.2	<i>Hoxa7</i>	-1.84	3.58
342	NM_133719.2	<i>Metrn</i>	-1.84	3.58
343	NM_145508.2	<i>Dyrk3</i>	-1.84	3.58
344	NM_030251.3	<i>Abtb1</i>	-1.84	3.57
345	NM_011496.1	<i>Aurkb</i>	-1.84	3.57
346	NM_001080926.1	<i>Lrp8</i>	-1.83	3.56
347	NM_153781.1	<i>Pygb</i>	-1.83	3.56
348	NM_011158.3	<i>Prkar2b</i>	-1.83	3.56
349	NM_001081406.1	<i>Lrr1</i>	-1.83	3.55
350	NM_145946.2	<i>Fanci</i>	-1.83	3.55
351	NM_001039139.1	<i>Camk2g</i>	-1.83	3.55
352	NM_172468.2	<i>Snx30</i>	-1.83	3.55
353	NM_001164369.1	<i>Bcas1</i>	-1.82	3.54
354	NM_026708.1	<i>Tlcd1</i>	-1.82	3.54
355	NM_010478.2	<i>Hspa1b</i>	-1.82	3.54
356	NM_001081069.1	<i>Rgs11</i>	-1.82	3.54

357	NM_024184.2	<i>Asf1b</i>	-1.82	3.54
358	NM_001145884.1	<i>Itgb5</i>	-1.82	3.53
359	NM_175380.5	<i>Gpd1l</i>	-1.82	3.53
360	NM_175445.4	<i>Rassf2</i>	-1.82	3.53
361	NM_026086.2	<i>Nanp</i>	-1.82	3.53
362	NM_001002267.2	<i>Tmem158</i>	-1.82	3.52
363	NM_001163518.1	<i>2410075B13Rik</i>	-1.81	3.52
364	NM_018739.2	<i>Rp9</i>	-1.81	3.51
365	NM_008568.2	<i>Mcm7</i>	-1.81	3.51
366	NM_001004362.2	<i>2610008E11Rik</i>	-1.81	3.51
367	NM_029850.3	<i>Bcl7a</i>	-1.81	3.5
368	NM_026281.2	<i>Tm7sf3</i>	-1.81	3.5
369	NM_001159559.1	<i>Xrcc6bp1</i>	-1.8	3.49
370	NM_027995.2	<i>Paqr7</i>	-1.8	3.49
371	NM_030246.2	<i>Dcaf4</i>	-1.8	3.49
372	NM_001004164.2	<i>Gnptab</i>	-1.8	3.49
373	NM_001177804.1	<i>Sirt3</i>	-1.8	3.48
374	NM_010615.1	<i>Kif11</i>	-1.8	3.48
375	NM_183091.3	<i>Tonsl</i>	-1.8	3.48
376	NM_019551.2	<i>Tdp2</i>	-1.8	3.48
377	NM_145998.3	<i>Hmx2</i>	-1.79	3.47
378	NM_010790.2	<i>Melk</i>	-1.79	3.46
379	NM_022419.3	<i>Abhd8</i>	-1.79	3.45
380	NM_019488.4	<i>Slc2a8</i>	-1.79	3.45
381	NM_025979.4	<i>Mastl</i>	-1.79	3.45
382	NM_027667.3	<i>Arhgap19</i>	-1.79	3.45
383	NM_170755.2	<i>Fam134a</i>	-1.79	3.45
384	NM_134054.2	<i>1110002B05Rik</i>	-1.79	3.45
385	NM_001025311.1	<i>St6galnac6</i>	-1.78	3.45
386	NM_013692.2	<i>Klf10</i>	-1.78	3.44
387	NM_001081266.1	<i>Ccdc142</i>	-1.78	3.44
388	NM_019482.2	<i>Panx1</i>	-1.78	3.44
389	NM_001146081.1	<i>Fancb</i>	-1.78	3.43
390	NM_145392.2	<i>Bag2</i>	-1.78	3.43
391	NM_178113.3	<i>Ncapd3</i>	-1.78	3.43
392	NR_028479.1	<i>Snora20</i>	-1.78	3.43
393	NM_001082974.2	<i>Neurl2</i>	-1.78	3.42

394	NM_145853.2	<i>Tpcn1</i>	-1.77	3.41
395	NM_001043322.1	<i>Fmn1</i>	-1.77	3.41
396	NM_001177867.1	<i>Sgol2</i>	-1.77	3.41
397	NM_026376.3	<i>Plxnd1</i>	-1.77	3.41
398	NM_026975.2	<i>Bola1</i>	-1.77	3.41
399	NM_134081.5	<i>Dnajc9</i>	-1.77	3.41
400	NM_025666.2	<i>Ubr7</i>	-1.77	3.41
401	NM_172513.3	<i>Fam126b</i>	-1.77	3.41
402	NM_011340.3	<i>Serpinf1</i>	-1.77	3.4
403	NM_011284.3	<i>Rpa2</i>	-1.77	3.4
404	NM_008057.3	<i>Fzd7</i>	-1.77	3.4
405	NM_027480.3	<i>Ankrd24</i>	-1.76	3.4
406	NM_001025371.2	<i>Serinc4</i>	-1.76	3.39
407	NM_139303.1	<i>Kif18a</i>	-1.76	3.39
408	NM_011945.2	<i>Map3k1</i>	-1.76	3.39
409	NM_019972.2	<i>Sort1</i>	-1.76	3.39
410	NM_011132.2	<i>Pole</i>	-1.76	3.39
411	NM_008679.3	<i>Ncoa3</i>	-1.76	3.39
412	NM_027187.3	<i>Rnaseh2a</i>	-1.76	3.38
413	NM_027435.2	<i>Atad2</i>	-1.76	3.38
414	NM_009643.1	<i>Ahnak</i>	-1.76	3.38
415	NM_001077695.1	<i>Ncoa2</i>	-1.76	3.38
416	NM_019484.4	<i>Alyref2</i>	-1.76	3.38
417	NM_010353.2	<i>Gsg2</i>	-1.76	3.38
418	NM_001164355.1	<i>Skal</i>	-1.76	3.38
419	NM_013538.5	<i>Cdca3</i>	-1.76	3.38
420	NM_001164205.1	<i>Tsen34</i>	-1.75	3.37
421	NM_001039507.1	<i>Lipe</i>	-1.75	3.37
422	NM_001037736.1	<i>Arhgef10</i>	-1.75	3.37
423	NM_009516.3	<i>Wee1</i>	-1.75	3.37
424	NM_001081066.1	<i>Dennd3</i>	-1.75	3.37
425	NM_027986.3	<i>Cdadcl1</i>	-1.75	3.36
426	NM_001146689.1	<i>Ezh2</i>	-1.75	3.36
427	NM_001037725.2	<i>Fam117b</i>	-1.75	3.36
428	NM_013907.2	<i>Fbxw4</i>	-1.75	3.35
429	NM_178309.2	<i>Brip1</i>	-1.74	3.35
430	NM_001128171.1	<i>Cyld</i>	-1.74	3.34

431	NM_148958.2	<i>Osbp110</i>	-1.74	3.34
432	NM_023480.2	<i>Fahd1</i>	-1.74	3.34
433	NR_027845.1	<i>Pex11b</i>	-1.74	3.33
434	NM_001134494.1	<i>Fam55c</i>	-1.74	3.33
435	NM_181395.2	<i>Pxdn</i>	-1.73	3.33
436	NM_001012401.2	<i>Hspb6</i>	-1.73	3.32
437	NM_080793.5	<i>Setd7</i>	-1.73	3.32
438	NM_173396.2	<i>Tgif2</i>	-1.73	3.31
439	NM_001162855.1	<i>Nsmce4a</i>	-1.73	3.31
440	NM_028815.4	<i>Cep97</i>	-1.73	3.31
441	NM_016777.3	<i>Nasp</i>	-1.73	3.31
442	NM_015733.4	<i>Casp9</i>	-1.73	3.31
443	NM_021398.3	<i>Slc43a3</i>	-1.72	3.3
444	NM_001081099.1	<i>2610002D18Rik</i>	-1.72	3.3
445	NM_172434.2	<i>Celf3</i>	-1.72	3.3
446	NM_001110265.1	<i>Ttk</i>	-1.72	3.3
447	NM_144852.3	<i>Slc7a4</i>	-1.72	3.3
448	NM_145220.2	<i>Appl2</i>	-1.72	3.3
449	NM_001039534.1	<i>Pstk</i>	-1.72	3.3
450	NM_001199310.1	<i>Lig1</i>	-1.72	3.3
451	NM_026260.2	<i>Tctn3</i>	-1.72	3.3
452	NM_133971.2	<i>Ankrd10</i>	-1.72	3.3
453	NM_019972.2	<i>Sort1</i>	-1.72	3.29
454	NM_029096.3	<i>1110008J03Rik</i>	-1.72	3.29
455	NM_025866.3	<i>Cdca7</i>	-1.72	3.29
456	NM_001163608.1	<i>Plxdc1</i>	-1.72	3.28
457	NM_001025365.2	<i>Miip</i>	-1.72	3.28
458	NM_053273.2	<i>Ttyh2</i>	-1.71	3.28
459	NM_001159646.1	<i>Dut</i>	-1.71	3.28
460	NM_025676.3	<i>Mcm8</i>	-1.71	3.28
461	NM_001122958.1	<i>Rad54l</i>	-1.71	3.28
462	NM_001039390.2	<i>Pkig</i>	-1.71	3.28
463	NM_177583.4	<i>Aph1b</i>	-1.71	3.27
464	NM_009445.2	<i>Ttk</i>	-1.71	3.27
465	NM_145076.3	<i>Trim24</i>	-1.71	3.26
466	NM_177167.4	<i>Ppm1e</i>	-1.71	3.26
467	NM_153820.3	<i>Arhgap15</i>	-1.71	3.26

468	NM_001177985.1	<i>Zmym3</i>	-1.71	3.26
469	NM_001114085.1	<i>Nde1</i>	-1.7	3.26
470	NM_058214.3	<i>Recql4</i>	-1.7	3.26
471	NM_028131.3	<i>Cenpn</i>	-1.7	3.26
472	NM_144547.2	<i>Amhr2</i>	-1.7	3.26
473	NM_028056.1	<i>1600002H07Rik</i>	-1.7	3.25
474	NM_029249.2	<i>4930547N16Rik</i>	-1.7	3.25
475	NM_010892.3	<i>Nek2</i>	-1.7	3.25
476	NM_012027.2	<i>Mprlp</i>	-1.7	3.25
477	NM_024248.1	<i>Cars2</i>	-1.7	3.24
478	NM_009151.3	<i>Selplg</i>	-1.7	3.24
479	NM_031397.2	<i>Biccl</i>	-1.7	3.24
480	NM_001163359.1	<i>Figl1</i>	-1.7	3.24
481	NM_013872.3	<i>Pmm1</i>	-1.69	3.24
482	NM_173437.2	<i>Nav1</i>	-1.69	3.23
483	NM_145409.2	<i>Chtf18</i>	-1.69	3.22
484	NM_001033244.3	<i>Fancd2</i>	-1.69	3.22
485	NM_007610.1	<i>Casp2</i>	-1.68	3.21
486	NM_172578.2	<i>Mis18bp1</i>	-1.68	3.21
487	NM_198423.3	<i>Bahcc1</i>	-1.68	3.21
488	NM_027269.3	<i>1110034A24Rik</i>	-1.68	3.21
489	NM_001115130.1	<i>Zbtb44</i>	-1.68	3.2
490	NM_008535.2	<i>Lyl1</i>	-1.68	3.2
491	NM_011932.2	<i>Dappl</i>	-1.68	3.2
492	NM_133926.2	<i>Camk1</i>	-1.68	3.2
493	NR_028081.1	<i>1700040I03Rik</i>	-1.68	3.2
494	NM_134471.4	<i>Kif2c</i>	-1.68	3.19
495	NM_001081170.1	<i>Pacs2</i>	-1.67	3.19
496	NM_021534.3	<i>Pxmp4</i>	-1.67	3.19
497	NM_001081373.2	<i>Cep164</i>	-1.67	3.18
498	NM_011206.2	<i>Ptpn18</i>	-1.67	3.18
499	NM_030750.3	<i>Sgpp1</i>	-1.67	3.18
500	NM_145588.1	<i>Kif22</i>	-1.67	3.18
501	NM_011497.3	<i>Aurka</i>	-1.67	3.18
502	NM_022980.4	<i>Rcan3</i>	-1.67	3.18
503	NM_001114328.1	<i>Ccpg1</i>	-1.67	3.17
504	NM_001130163.1	<i>Oxr1</i>	-1.66	3.17

505	NM_027271.1	<i>D3Ertd751e</i>	-1.66	3.17
506	NM_001040695.1	<i>Uevld</i>	-1.66	3.16
507	NM_018747.4	<i>Akap7</i>	-1.66	3.16
508	NM_030026.2	<i>Mccc2</i>	-1.66	3.16
509	NM_175027.4	<i>Fancb</i>	-1.66	3.16
510	NM_010286.3	<i>Tsc22d3</i>	-1.66	3.15
511	NM_027495.4	<i>Tmem144</i>	-1.65	3.15
512	NM_146171.1	<i>Ncapd2</i>	-1.65	3.15
513	NM_001113364.1	<i>Tbc1d14</i>	-1.65	3.15
514	NM_026282.5	<i>Spc24</i>	-1.65	3.14
515	NM_001081117.2	<i>Mki67</i>	-1.65	3.13
516	NM_025560.2	<i>1810049H13Rik</i>	-1.65	3.13
517	NM_001206684.1	<i>2610528A11Rik</i>	-1.64	3.13
518	NM_001042653.1	<i>Oip5</i>	-1.64	3.12
519	NM_007678.3	<i>Cebpa</i>	-1.64	3.12
520	NM_025508.4	<i>Gmpr</i>	-1.64	3.11
521	NM_199197.1	<i>Rbfa</i>	-1.64	3.11
522	NM_026431.2	<i>1810043G02Rik</i>	-1.64	3.11
523	NM_013733.3	<i>Chaf1a</i>	-1.64	3.11
524	NM_009547.2	<i>Zfp161</i>	-1.64	3.11
525	NM_178683.4	<i>Depdc1b</i>	-1.64	3.11
526	NM_001109045.1	<i>Aqp8</i>	-1.63	3.1
527	NM_029835.1	<i>5730590G19Rik</i>	-1.63	3.1
528	NM_175275.3	<i>Cntln</i>	-1.63	3.1
529	NM_177026.1	<i>Tmcc3</i>	-1.63	3.1
530	NM_001145898.1	<i>BC052040</i>	-1.63	3.1
531	NM_026024.2	<i>Ube2t</i>	-1.63	3.1
532	NM_001142938.1	<i>AK010878</i>	-1.63	3.09
533	NM_011234.4	<i>Rad51</i>	-1.63	3.09
534	NM_011605.2	<i>Tmpo</i>	-1.63	3.09
535	NM_133765.4	<i>Fbxo31</i>	-1.63	3.09
536	NM_021428.4	<i>Dexi</i>	-1.62	3.08
537	NM_175152.4	<i>Thap3</i>	-1.62	3.08
538	NM_008841.2	<i>Pik3r2</i>	-1.62	3.07
539	NM_174987.4	<i>1810063B05Rik</i>	-1.62	3.07
540	NM_001167967.1	<i>Ankrd10</i>	-1.62	3.07
541	NM_001162415.1	<i>Pfkfb2</i>	-1.62	3.07

542	NM_033146.1	<i>Fam158a</i>	-1.62	3.07
543	NM_183046.1	<i>Kif20b</i>	-1.62	3.07
544	NM_144818.3	<i>Ncaph</i>	-1.61	3.06
545	NM_027258.1	<i>Rnf157</i>	-1.61	3.06
546	NM_017376.3	<i>Tef</i>	-1.61	3.06
547	NM_008892.2	<i>Pola1</i>	-1.61	3.05
548	NR_037773.1	<i>Tmem41a</i>	-1.61	3.05
549	NM_008793.2	<i>Pcsk4</i>	-1.61	3.05
550	NM_183220.2	<i>Accs</i>	-1.61	3.05
551	NM_008063.2	<i>Slc37a4</i>	-1.61	3.05
552	NM_009399.3	<i>Tnfrsf11a</i>	-1.61	3.05
553	NM_009352.2	<i>Terf1</i>	-1.61	3.05
554	NM_028128.1	<i>Rfc5</i>	-1.6	3.04
555	NM_001163502.1	<i>C130039O16Rik</i>	-1.6	3.04
556	NM_172543.4	<i>Fam117a</i>	-1.6	3.03
557	NM_028119.5	<i>Ddb2</i>	-1.6	3.03
558	NM_001163794.1	<i>Pdik1l</i>	-1.6	3.03
559	NM_001009951.1	<i>BC088983</i>	-1.6	3.03
560	NM_007398.3	<i>Ada</i>	-1.6	3.03
561	NM_001098528.2	<i>Kcnb2</i>	-1.6	3.02
562	NM_010347.3	<i>Aes</i>	-1.59	3.02
563	NM_010150.2	<i>Nr2f6</i>	-1.59	3.02
564	NM_199308.2	<i>Mast3</i>	-1.59	3.02
565	NM_028481.1	<i>Ccdc18</i>	-1.59	3.02
566	NR_002847.2	<i>Malat1</i>	-1.59	3.01
567	NM_020046.3	<i>Dhodh</i>	-1.59	3.01
568	NM_001130526.1	<i>Lzts2</i>	-1.59	3.01
569	NM_013769.2	<i>Tjp3</i>	-1.59	3.01
570	NM_001127382.1	<i>Rbm47</i>	-1.59	3.01
571	NM_025964.3	<i>Mettl21a</i>	-1.59	3.01
572	NM_001014976.2	<i>Espl1</i>	-1.59	3.01
573	NM_001164366.1	<i>Atp13a2</i>	-1.59	3
574	NM_030719.3	<i>Gatsl2</i>	-1.59	3
575	NM_023317.2	<i>Ndel</i>	-1.59	3
576	NM_028101.4	<i>Jmjd8</i>	-1.59	3
577	NM_001081453.1	<i>Nin</i>	-1.59	3
578	NM_025411.4	<i>1110049F12Rik</i>	-1.58	3



579	NM_009013.3	<i>Rad51ap1</i>	-1.58	3
580	NM_028006.2	<i>Tube1</i>	-1.58	2.99
581	NM_030708.2	<i>Zfx4</i>	-1.58	2.99
582	NM_001146073.1	<i>Hexdc</i>	-1.58	2.99
583	NM_009863.2	<i>Cdc7</i>	-1.58	2.99
584	NM_011131.3	<i>Pold1</i>	-1.58	2.99
585	NM_133835.2	<i>Ubacl</i>	-1.58	2.99
586	NM_080446.2	<i>Helb</i>	-1.58	2.99
587	NM_001145780.1	<i>Use1</i>	-1.58	2.98
588	NM_201367.3	<i>Gpr176</i>	-1.58	2.98
589	NM_025853.3	<i>Dsn1</i>	-1.57	2.97
590	NM_198654.3	<i>Nsl1</i>	-1.57	2.97
591	NM_001146180.1	<i>Mtss1</i>	-1.57	2.97
592	NM_013829.2	<i>Plcb4</i>	-1.57	2.97
593	NM_027715.1	<i>Otud1</i>	-1.57	2.97
594	NM_145573.2	<i>Mrps35</i>	-1.57	2.97
595	NM_001164112.1	<i>Nfatc1</i>	-1.57	2.97
596	NM_019479.3	<i>Hes6</i>	-1.57	2.96
597	NM_146033.3	<i>Ankmy2</i>	-1.57	2.96
598	NM_174876.3	<i>Impg2</i>	-1.57	2.96
599	NM_009644.2	<i>Ahrr</i>	-1.57	2.96
600	NM_001159581.1	<i>Mutyh</i>	-1.56	2.96
601	XR_105811.1	<i>A230045G11Rik</i>	-1.56	2.96
602	NM_011919.4	<i>Ingl</i>	-1.56	2.95
603	NM_029988.2	<i>Pigh</i>	-1.56	2.95
604	NM_133215.1	<i>Mtmr4</i>	-1.56	2.95
605	NM_001033175.2	<i>Cln6</i>	-1.56	2.95
606	NM_144804.1	<i>Depdc7</i>	-1.56	2.95
607	NM_001033273.2	<i>5031439G07Rik</i>	-1.56	2.95
608	NM_008026.4	<i>Fli1</i>	-1.56	2.95
609	NM_024245.4	<i>Kif23</i>	-1.56	2.95
610	NM_008566.2	<i>Mcm5</i>	-1.56	2.95
611	NM_011249.2	<i>Rbl1</i>	-1.56	2.94
612	NM_001160145.1	<i>Tmem9</i>	-1.56	2.94
613	NM_177466.4	<i>Rab1lfip5</i>	-1.55	2.93
614	NM_011121.3	<i>Plk1</i>	-1.55	2.93
615	NM_001163042.1	<i>Haus8</i>	-1.55	2.93

616	NM_007499.2	<i>Atm</i>	-1.55	2.92
617	NM_011397.4	<i>Slc23a1</i>	-1.55	2.92
618	NM_177460.4	<i>Parp16</i>	-1.55	2.92
619	NM_026321.4	<i>Fam174a</i>	-1.55	2.92
620	NM_021506.2	<i>Sh3rf1</i>	-1.54	2.91
621	NM_145928.1	<i>Tspan14</i>	-1.54	2.91
622	NM_001081001.1	<i>Brca2</i>	-1.54	2.91
623	NM_001040686.1	<i>Zfp692</i>	-1.54	2.9
624	NM_016785.2	<i>Tpmt</i>	-1.54	2.9
625	NR_015572.1	<i>1810014B01Rik</i>	-1.53	2.9
626	NM_030087.2	<i>Ndufv3</i>	-1.53	2.89
627	NM_178732.3	<i>Zfp324</i>	-1.53	2.89
628	NM_001039556.3	<i>Rad54b</i>	-1.53	2.89
629	NM_001163476.1	<i>Gins1</i>	-1.53	2.88
630	NM_001081117.2	<i>Mki67</i>	-1.53	2.88
631	NM_026129.2	<i>Erp29</i>	-1.53	2.88
632	NM_019990.4	<i>Stard10</i>	-1.52	2.88
633	NM_080850.2	<i>Pask</i>	-1.52	2.87
634	NM_138583.2	<i>D16H22S680E</i>	-1.52	2.87
635	NM_001178013.1	<i>Sfxn3</i>	-1.52	2.87
636	NM_001161737.1	<i>Siva1</i>	-1.52	2.87
637	NM_134042.2	<i>Aldh6a1</i>	-1.52	2.87
638	NM_177171.4	<i>Heatr5a</i>	-1.52	2.87
639	NM_023294.2	<i>Ndc80</i>	-1.52	2.87
640	NM_027009.2	<i>Rfc3</i>	-1.52	2.86
641	NM_001204273.1	<i>Lsm2</i>	-1.52	2.86
642	NM_001012273.1	<i>Birc5</i>	-1.52	2.86
643	NM_009569.3	<i>Zfpm1</i>	-1.51	2.86
644	NM_183321.1	<i>BC053749</i>	-1.51	2.85
645	NM_146256.3	<i>Hpdl</i>	-1.51	2.85
646	NM_053269.3	<i>Rad51c</i>	-1.51	2.85
647	NM_178911.4	<i>Pld4</i>	-1.51	2.85
648	NM_001163422.1	<i>Tatdn3</i>	-1.51	2.85
649	NM_026512.1	<i>Bphl</i>	-1.51	2.85
650	NM_001039959.1	<i>Ahnak</i>	-1.51	2.85
651	NM_198105.2	<i>Fam120c</i>	-1.51	2.84
652	NM_019798.5	<i>Pde4a</i>	-1.51	2.84

653	NM_176979.5	<i>Topbp1</i>	-1.51	2.84
654	NM_028875.2	<i>Xrcc3</i>	-1.5	2.84
655	NM_011623.2	<i>Top2a</i>	-1.5	2.83
656	NM_028634.3	<i>Cby1</i>	-1.5	2.83
657	NM_013753.2	<i>X99384</i>	-1.5	2.83
658	NM_019940.2	<i>Zfp111</i>	-1.5	2.83
659	NM_026282.5	<i>Spc24</i>	-1.5	2.83
660	NM_001012273.1	<i>Birc5</i>	-1.5	2.83
661	NM_146067.3	<i>Cpped1</i>	-1.5	2.83
662	NM_177752.4	<i>Eme1</i>	-1.5	2.82
663	NM_009689.2	<i>Birc5</i>	-1.49	2.82
664	NM_001081099.1	<i>2610002D18Rik</i>	-1.49	2.82
665	NM_001113470.1	<i>Ctdsp2</i>	-1.49	2.81
666	NM_011906.2	<i>Tpra1</i>	-1.49	2.81
667	NM_007533.5	<i>Bckdha</i>	-1.49	2.81
668	NM_008044.2	<i>Fxn</i>	-1.49	2.8
669	NM_181815.3	<i>4930534B04Rik</i>	-1.48	2.8
670	NM_177343.3	<i>Camk1d</i>	-1.48	2.8
671	NM_008637.1	<i>Nudt1</i>	-1.48	2.8
672	NM_001039669.2	<i>Iffo1</i>	-1.48	2.8
673	NM_011734.3	<i>Siae</i>	-1.48	2.8
674	NM_001253809.1	<i>Racgap1</i>	-1.48	2.79
675	NM_026543.3	<i>3010026O09Rik</i>	-1.48	2.79
676	NM_025812.2	<i>Hmg20a</i>	-1.48	2.79
677	NM_212473.1	<i>Fam53b</i>	-1.48	2.79
678	NM_175265.4	<i>6720463M24Rik</i>	-1.48	2.79
679	NM_010829.2	<i>Msh3</i>	-1.48	2.79
680	NM_001081499.2	<i>Tbc1d8b</i>	-1.48	2.78
681	NM_011871.2	<i>Prkra</i>	-1.48	2.78
682	NM_008565.3	<i>Mcm4</i>	-1.47	2.77
683	NM_001195486.1	<i>Srsf7</i>	-1.47	2.77
684	NM_001039562.1	<i>Ankrd37</i>	-1.47	2.77
685	NM_027855.3	<i>0610007C21Rik</i>	-1.47	2.77
686	NM_011894.2	<i>Sh3bp5</i>	-1.47	2.77
687	NM_028536.1	<i>1700054N08Rik</i>	-1.47	2.77
688	NM_001081396.2	<i>Wdr67</i>	-1.47	2.77
689	NM_146089.2	<i>Haus1</i>	-1.47	2.77

690	NM_001114085.1	<i>Nde1</i>	-1.47	2.76
691	NM_011919.4	<i>Ing1</i>	-1.47	2.76
692	NM_080456.1	<i>Mrps6</i>	-1.46	2.76
693	NM_133190.1	<i>Cacng8</i>	-1.46	2.76
694	NM_178396.4	<i>Car12</i>	-1.46	2.75
695	NM_199308.2	<i>Mast3</i>	-1.46	2.75
696	NM_001109993.1	<i>Tmem141</i>	-1.46	2.75
697	NM_176836.3	<i>Fam76b</i>	-1.46	2.75
698	NM_001136073.1	<i>Nfatc2</i>	-1.46	2.75
699	NM_024240.6	<i>Gins4</i>	-1.46	2.75
700	NM_019800.4	<i>Acp6</i>	-1.46	2.74
701	NM_011020.3	<i>Hspa4l</i>	-1.45	2.74
702	NM_172824.3	<i>Ccdc14</i>	-1.45	2.73
703	NM_153545.2	<i>Lrrc45</i>	-1.45	2.73
704	NM_008787.3	<i>Pcnt</i>	-1.45	2.73
705	NM_020270.2	<i>Scamp5</i>	-1.45	2.73
706	NM_029394.3	<i>Snx24</i>	-1.45	2.73
707	NM_001112711.1	<i>Grk6</i>	-1.45	2.73
708	NM_016769.4	<i>Smad3</i>	-1.45	2.73
709	NM_001081170.1	<i>Pacs2</i>	-1.45	2.73
710	NM_009014.3	<i>Rad5111</i>	-1.45	2.73
711	NM_027745.1	<i>Ccdc57</i>	-1.45	2.72

**Table S4. The differentially expressed genes between shDab2-B and shLuc cells (DC/LC)**

No.	GenBank accession no.	Gene Symbol	Log <sub>2</sub> Ratio	Fold Change
<b>Up-regulated genes</b>				
1	NM_022886.2	<i>Scel</i>	2.86	7.24
2	NM_080853.3	<i>Slc17a6</i>	2.81	7.00
3	NM_001081076.2	<i>Gucy2g</i>	2.69	6.45
4	NM_010215.3	<i>Il4i1</i>	2.37	5.16
5	NM_001081180.1	<i>Spink5</i>	2.36	5.15
6	NM_011333.3	<i>Ccl2</i>	2.20	4.59
7	NM_010658.3	<i>Mafb</i>	2.18	4.52
8	NM_020008.2	<i>Clec7a</i>	2.17	4.50
9	NM_023061.2	<i>Mcam</i>	2.14	4.42
10	NM_174876.3	<i>Impg2</i>	2.13	4.37
11	NM_010118.3	<i>Egr2</i>	1.99	3.98
12	NM_001146119.1	<i>Fam49a</i>	1.96	3.89
13	NM_001199105.1	<i>Trp53inp1</i>	1.95	3.86
14	NM_013750.2	<i>Phlda3</i>	1.94	3.84
15	NM_021334.2	<i>Itgax</i>	1.94	3.83
16	NM_026439.2	<i>Ccdc80</i>	1.90	3.74
17	NR_030687.1	<i>Rn7sk</i>	1.89	3.72
18	NM_153408.2	<i>Neurl3</i>	1.87	3.66
19	NM_008808.3	<i>Pdgfa</i>	1.87	3.65
20	NM_011607.3	<i>Tnc</i>	1.84	3.59
21	NM_013454.3	<i>Abca1</i>	1.82	3.54
22	NM_009344.3	<i>Phlda1</i>	1.72	3.29
23	NM_019568.2	<i>Cxcl14</i>	1.69	3.22
24	NM_011459.4	<i>Serpib8</i>	1.67	3.19
25	NM_008392.1	<i>Irg1</i>	1.60	3.03
26	NM_176913.3	<i>Dpep2</i>	1.59	3.01
27	NM_001172055.1	<i>Bdh2</i>	1.59	3.00
28	NM_009344.3	<i>Phlda1</i>	1.58	2.98
29	NM_017480.2	<i>Icos</i>	1.57	2.97
30	NM_009192.2	<i>Sla</i>	1.55	2.93

31	NM_008139.5	<i>Gnaq</i>	1.52	2.87
32	NM_010130.4	<i>Emr1</i>	1.52	2.86
33	NM_001190950.1	<i>Kcne3</i>	1.48	2.79
34	NM_011338.2	<i>Ccl9</i>	1.47	2.78
<b>Down-regulated genes</b>				
1	NM_153543.2	<i>Aldh1l2</i>	-2.58	5.99
2	NM_008132.2	<i>Glrp1</i>	-2.47	5.55
3	NM_018861.3	<i>Slc1a4</i>	-2.43	5.41
4	NM_175093.2	<i>Trib3</i>	-2.43	5.38
5	NM_145953.2	<i>Cth</i>	-2.32	4.98
6	NM_026929.4	<i>Chac1</i>	-2.22	4.66
7	NM_001130479.1	<i>Nucb2</i>	-1.92	3.77
8	NM_027258.1	<i>Rnf157</i>	-1.86	3.64
9	NM_008483.3	<i>Lamb2</i>	-1.71	3.26
10	NM_027641.2	<i>Spef1</i>	-1.69	3.23
11	NM_019765.4	<i>Clip1</i>	-1.59	3.01
12	NM_008695.2	<i>Nid2</i>	-1.56	2.96
13	NM_177981.2	<i>Hap1</i>	-1.55	2.94
14	NM_001159538.1	<i>Fgd2</i>	-1.55	2.93
15	NM_001130479.1	<i>Nucb2</i>	-1.51	2.86
16	NM_008810.2	<i>Pdha1</i>	-1.51	2.86
17	NM_001105561.1	<i>Gm11545</i>	-1.50	2.82
18	NM_008737.2	<i>Nrp1</i>	-1.45	2.73

**Table S5. The differentially expressed genes between LPS-treated shDab2-B and shLuc cells (DL/LL)**

No.	GenBank accession no.	Gene Symbol	Log <sub>2</sub> Ratio	Fold Change
<b>Up-regulated genes</b>				
1	NR_033554.1	<i>D330041H03Rik</i>	6.64	100.00
2	NM_031168.1	<i>Il6</i>	4.61	24.47
3	NM_001174170.1	<i>Serpib2</i>	3.95	15.43
4	NM_010259.2	<i>Gbp1</i>	3.77	13.63
5	NM_008491.1	<i>Lcn2</i>	3.74	13.35
6	NM_010260.1	<i>Gbp2</i>	3.42	10.70
7	NM_001044384.1	<i>Timp1</i>	2.99	7.94
8	NM_020001.2	<i>Clec4n</i>	2.80	6.98
9	NM_008485.3	<i>Lamc2</i>	2.79	6.93
10	NM_203320.2	<i>Cxcl3</i>	2.70	6.51
11	NM_177371.3	<i>Tnfrsf15</i>	2.64	6.25
12	NM_017466.4	<i>Ccr12</i>	2.63	6.19
13	NM_010846.1	<i>Mx1</i>	2.60	6.07
14	NM_001081984.1	<i>Popdc2</i>	2.56	5.92
15	NM_009137.2	<i>Ccl22</i>	2.56	5.92
16	NM_001159558.1	<i>Cd36</i>	2.54	5.81
17	NM_021334.2	<i>Itgax</i>	2.53	5.77
18	NM_011331.2	<i>Ccl12</i>	2.52	5.74
19	NM_001081180.1	<i>Spink5</i>	2.51	5.70
20	NM_001040699.1	<i>Mtmr7</i>	2.49	5.64
21	NM_008329.2	<i>Ifi204</i>	2.47	5.53
22	NM_001142706.1	<i>Cfb</i>	2.41	5.30
23	NM_010554.4	<i>Il1a</i>	2.35	5.11
24	NM_010171.3	<i>F3</i>	2.34	5.07
25	NM_010510.1	<i>Ifnb1</i>	2.33	5.01
26	NM_013454.3	<i>Abca1</i>	2.30	4.93
27	NM_172603.3	<i>Phf11</i>	2.27	4.83
28	NM_010130.4	<i>Emr1</i>	2.27	4.81
29	NM_019450.3	<i>Il1f6</i>	2.26	4.80

30	NM_001083312.1	<i>Gbp7</i>	2.26	4.79
31	NM_001005858.3	<i>I830012O16Rik</i>	2.24	4.73
32	NM_020008.2	<i>Clec7a</i>	2.23	4.68
33	NM_018734.3	<i>Gbp3</i>	2.22	4.67
34	NM_001166376.1	<i>Ms4a6c</i>	2.17	4.50
35	NM_009373.3	<i>Tgm2</i>	2.16	4.47
36	NM_021274.2	<i>Cxcl10</i>	2.13	4.38
37	NM_013654.3	<i>Ccl7</i>	2.13	4.38
38	NM_010104.3	<i>Edn1</i>	2.13	4.37
39	NM_153510.3	<i>Pilra</i>	2.12	4.35
40	NM_019448.3	<i>Dnmt3l</i>	2.11	4.32
41	NM_019568.2	<i>Cxcl14</i>	2.10	4.28
42	NM_008230.5	<i>Hdc</i>	2.09	4.27
43	NM_080853.3	<i>Slc17a6</i>	2.08	4.21
44	NM_028595.4	<i>Ms4a6c</i>	2.04	4.13
45	NM_009344.3	<i>Phlda1</i>	2.04	4.12
46	NM_008331.3	<i>Ifit1</i>	2.00	4.00
47	NM_001037917.2	<i>Gm6377</i>	1.91	3.77
48	NM_175026.3	<i>Pyhin1</i>	1.87	3.66
49	NM_001159402.1	<i>Upp1</i>	1.86	3.62
50	NM_009895.3	<i>Cish</i>	1.84	3.57
51	NM_011333.3	<i>Ccl2</i>	1.83	3.54
52	NM_007498.3	<i>Atf3</i>	1.82	3.54
53	NM_030565.6	<i>Fam20c</i>	1.81	3.50
54	NM_009969.4	<i>Csf2</i>	1.79	3.47
55	NM_009627.1	<i>Adm</i>	1.79	3.46
56	NM_001013761.1	<i>Gm606</i>	1.79	3.45
57	NM_010329.2	<i>Pdpr</i>	1.78	3.44
58	NM_001002927.2	<i>Penk</i>	1.78	3.43
59	NM_009192.2	<i>Sla</i>	1.77	3.42
60	NM_011607.3	<i>Tnc</i>	1.77	3.41
61	NM_011610.3	<i>Tnfrsf1b</i>	1.77	3.41
62	NM_177371.3	<i>Tnfrsf15</i>	1.77	3.41
63	NM_010442.2	<i>Hmox1</i>	1.75	3.37
64	NM_176913.3	<i>Dpep2</i>	1.74	3.34
65	NM_008215.2	<i>Has1</i>	1.74	3.33



66	NM_172803.2	<i>Dock4</i>	1.73	3.33
67	NM_008964.4	<i>Ptger2</i>	1.72	3.29
68	NM_009856.2	<i>Cd83</i>	1.69	3.23
69	NM_028096.1	<i>2010300C02Rik</i>	1.69	3.23
70	NM_021394.2	<i>Zbp1</i>	1.67	3.18
71	NM_008392.1	<i>Irg1</i>	1.66	3.15
72	NM_145066.4	<i>Gpr85</i>	1.65	3.14
73	NM_019466.3	<i>Rcan1</i>	1.63	3.10
74	NM_153564.2	<i>Gbp5</i>	1.63	3.09
75	NR_027805.1	<i>A430093F15Rik</i>	1.62	3.07
76	NM_009855.2	<i>Cd80</i>	1.61	3.05
77	NM_026835.2	<i>Ms4a6d</i>	1.61	3.05
78	NM_013673.3	<i>Sp100</i>	1.60	3.03
79	NM_011610.3	<i>Tnfrsf1b</i>	1.59	3.02
80	NM_010821.1	<i>Mpeg1</i>	1.59	3.01
81	NM_023120.4	<i>Gnb1l</i>	1.58	2.98
82	NM_001128133.1	<i>Cd200r3</i>	1.57	2.96
83	NM_010215.3	<i>Il4il</i>	1.56	2.94
84	NM_010720.3	<i>Lipg</i>	1.55	2.94
85	NM_009705.3	<i>Arg2</i>	1.55	2.93
86	NM_025992.2	<i>Herc6</i>	1.55	2.93
87	XM_003086779.1	<i>Gm11428</i>	1.55	2.92
88	NM_133914.2	<i>Rasa4</i>	1.54	2.92
89	NM_008139.5	<i>Gnaq</i>	1.54	2.91
90	NM_007836.1	<i>Gadd45a</i>	1.54	2.90
91	NM_001146119.1	<i>Fam49a</i>	1.53	2.89
92	NM_021384.4	<i>Rsad2</i>	1.52	2.87
93	NM_001113527.1	<i>Isg20</i>	1.52	2.86
94	NM_025586.3	<i>Rpl15</i>	1.51	2.84
95	NM_008538.2	<i>Marcks</i>	1.51	2.84
96	NM_207231.1	<i>Arl5c</i>	1.49	2.82
97	NM_020260.2	<i>Arhgap31</i>	1.49	2.81
98	NM_134102.4	<i>Pla1a</i>	1.48	2.78
99	NM_001081076.2	<i>Gucy2g</i>	1.47	2.77
100	NM_011299.4	<i>Rps6ka2</i>	1.47	2.76
101	NM_025626.4	<i>Fam107b</i>	1.46	2.76

102	NM_008321.2	<i>Id3</i>	1.46	2.75
103	NM_013653.3	<i>Ccl5</i>	1.45	2.74
104	NM_008332.3	<i>Ifit2</i>	1.45	2.74
<b>Down-regulated genes</b>				
1	NM_001105561.1	<i>Gm11545</i>	-2.41	5.32
2	XR_140864.1	<i>5330417H12Rik</i>	-2.30	4.92
3	NM_134050.4	<i>Rab15</i>	-2.07	4.21
4	NM_001164717.1	<i>Sh3pxd2a</i>	-1.97	3.93
5	NM_177235.3	<i>Bend6</i>	-1.95	3.88
6	NM_181039.2	<i>Lphn1</i>	-1.92	3.79
7	NM_029116.2	<i>Kbtbd11</i>	-1.84	3.59
8	NM_027118.1	<i>Cdk13</i>	-1.78	3.44
9	NM_178396.4	<i>Car12</i>	-1.76	3.39
10	NM_177778.4	<i>Armc7</i>	-1.74	3.33
11	NM_008695.2	<i>Nid2</i>	-1.69	3.22
12	NM_178856.1	<i>Gins2</i>	-1.68	3.20
13	NM_016803.3	<i>Chst3</i>	-1.65	3.13
14	NM_019429.2	<i>Prss16</i>	-1.64	3.13
15	NM_146094.2	<i>Fads1</i>	-1.64	3.11
16	NM_007421.2	<i>Adssl1</i>	-1.64	3.11
17	NM_001159538.1	<i>Fgd2</i>	-1.59	3.01
18	NM_001033162.2	<i>1700012A16Rik</i>	-1.59	3.00
19	NM_181316.4	<i>Bbs9</i>	-1.58	3.00
20	NM_008323.1	<i>Idh3g</i>	-1.57	2.97
21	NM_008810.2	<i>Pdha1</i>	-1.56	2.96
22	NM_001145821.1	<i>Ggtal1</i>	-1.56	2.95
23	NM_148958.2	<i>Osbpl10</i>	-1.53	2.89
24	NM_001080926.1	<i>Lrp8</i>	-1.53	2.89
25	NM_015733.4	<i>Casp9</i>	-1.53	2.88
26	NM_177167.4	<i>Ppm1e</i>	-1.52	2.86
27	NM_001033171.2	<i>Klrg2</i>	-1.50	2.82
28	NM_011110.4	<i>Pla2g5</i>	-1.48	2.80
29	NM_145953.2	<i>Cth</i>	-1.47	2.76
30	NM_001143777.1	<i>Fam13c</i>	-1.46	2.76
31	NM_001130479.1	<i>Nucb2</i>	-1.46	2.76
32	NM_025995.2	<i>Fbxo5</i>	-1.46	2.75

