

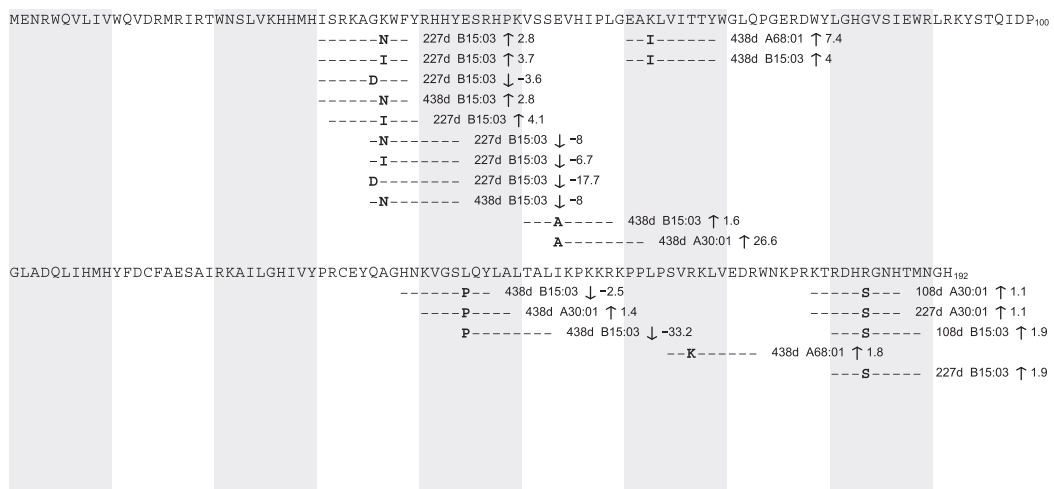
## Patient B



## Patient E



## Patient G



**SUPPLEMENTARY FIG. S2.** Predicted binding affinities of putative Vif epitopes during early infection. Patient transmitted/founder (MRCA) and subsequent putative predicted epitope binding fold change illustrated for study participants B, E, G, H, OC, OI, OS, QR, QT, and QU. MRCA, most recent common ancestor.

### Patient H



### Patient OC



### Patient OI



## Patient OS



## Patient QR



## Patient QT



SUPPLEMENTARY FIG. S2. (continued).

# Patient QU

MENRWQVLIVWQVDRMKIRTWNSLVKHHMYVSKRAQGWFYRHHYESRHPKVSSEVYIPVGEARLVIKTYWGLHTGERDWHLGHGVSIEWRLRGYSTQVDP<sub>100</sub>  
I----- 174d A02:01 ↑ 1.8

GLADQLIHVHYFDCFADSAIRKALLGQVVI PRCDYQAGHNKVGSLQYLALTALKPRKRKPLPSVRKLIEDRWNKPKTRGHRGNHTMNGH<sub>192</sub>

**SUPPLEMENTARY FIG. S2.** (continued).