

Supplemental material

Young et al., <http://dx.doi.org/10.1084/jem.20160168>

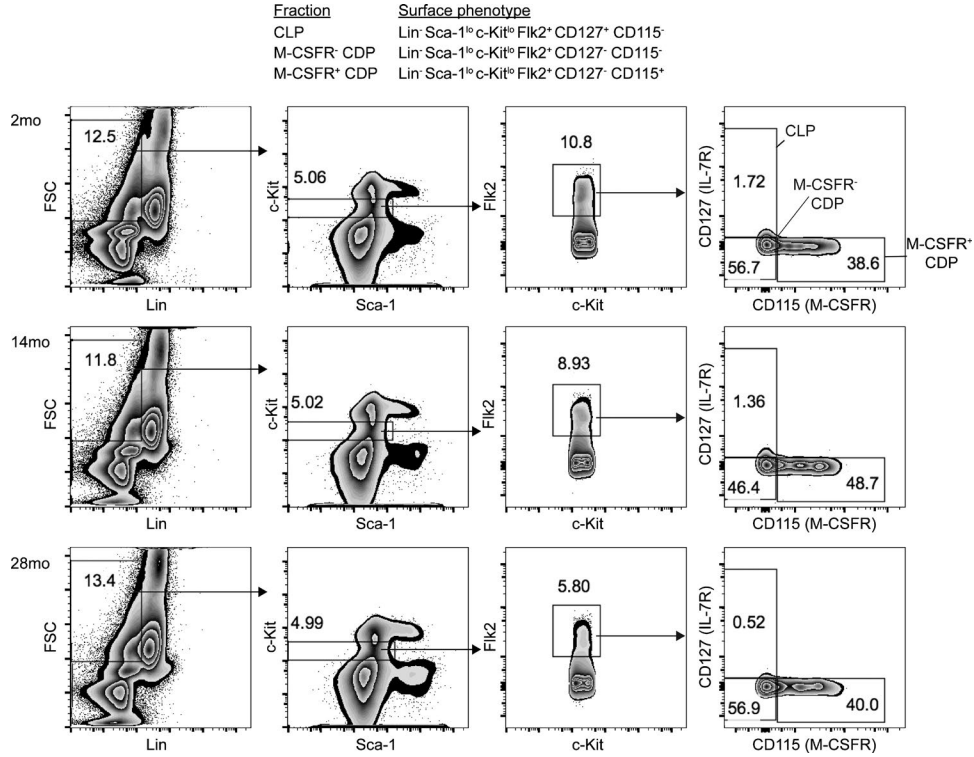


Figure S1. **FACS gating showing frequency of committed lymphoid progenitor cells in representative 2-mo, 14-mo, and 28-mo mice.** FACS gating showing frequency of CLP and CDP subsets in representative 2-mo, 14-mo, and 28-mo mice. The inset table defines surface markers used for cell isolation. FSC, forward side scatter.

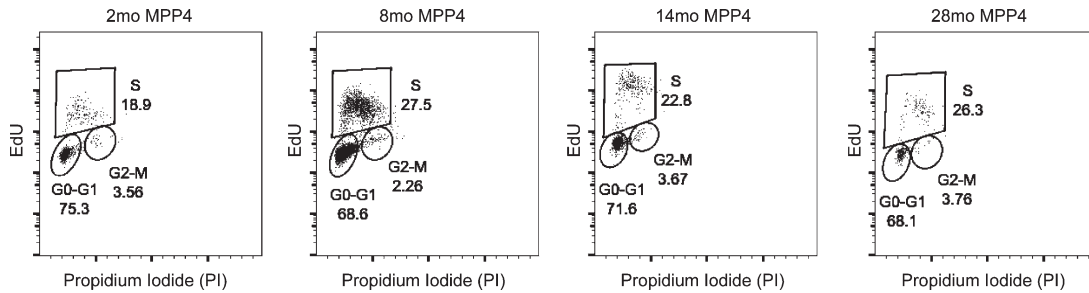


Figure S2. **FACS gating showing frequency of MPP4 cells in G0/G1, S, and G2/M cell cycle phases measured by EdU incorporation.** Representative 2-mo, 8-mo, 14-mo, and 28-mo mice are shown.

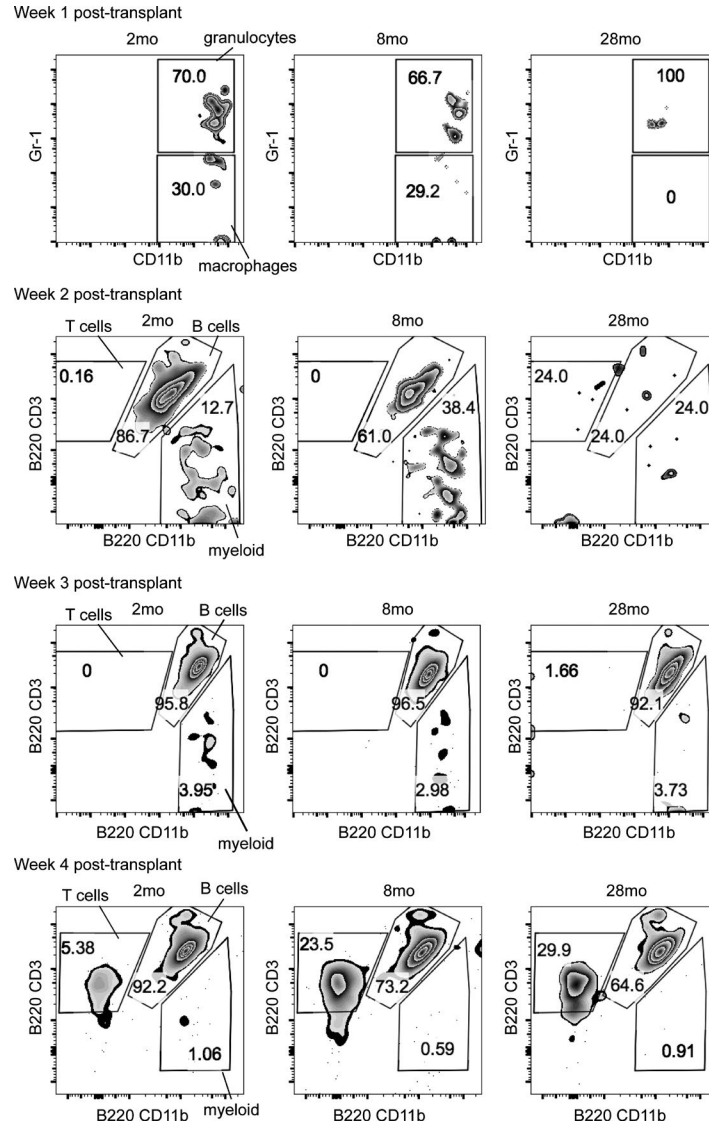


Figure S3. FACS gating showing frequency of donor CD45.2⁺ myeloid, B cells, and T cells in peripheral blood of recipient mice at 1–4 wk after transplant of LMPP cells. Representative recipient mice transplanted with 2-mo, 8-mo, and 28-mo donor LMPP cells are shown.