

SUPPLEMENTAL MATERIAL

Yang et al., <http://dx.doi.org/10.1084/jem.20160185>

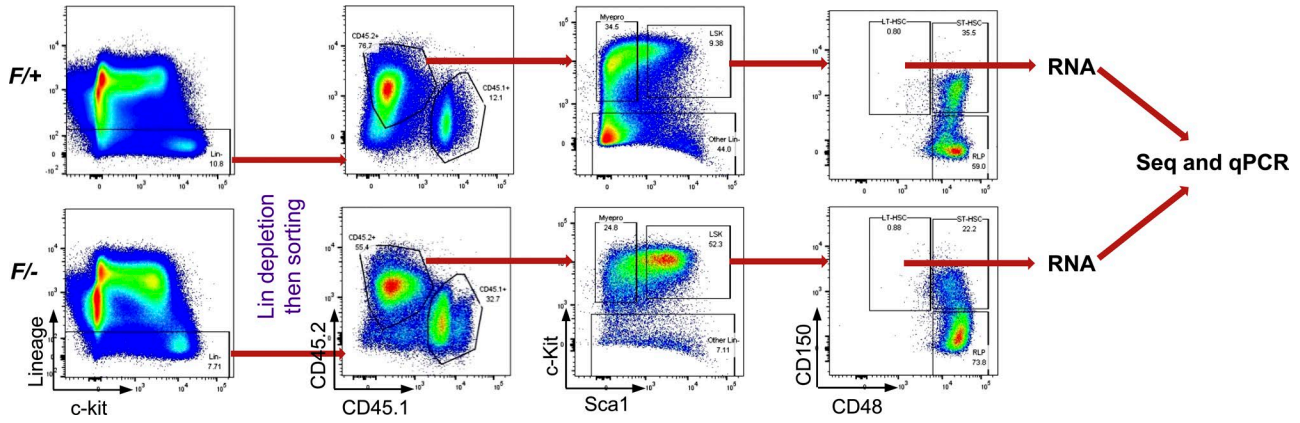


Figure S1. **Flow cytometry gating strategies.** Flow cytometry gating strategies to isolate donor-derived LT-HSCs from BM chimeras 2 wk after plpC injections into chimeras after the transplantation scheme in Fig. 4 A.

Tables S1–S5 are available as Excel files. Table S1 lists cell surface phenotypes used in this work. Table S2 lists gene expression in LSK and MyePro cell populations in control and *Dpy30* KO background. Table S3 lists genes that were changed in expression in *Mx1-Cre; Dpy30<sup>F/-</sup>* versus *Mx1-cre; Dpy30<sup>F/+</sup>* donor-derived LT-HSCs in BM chimeras in two independent transplantations. Table S4 lists H3K4me3 at TSS regions of genes in control and *Dpy30* KO background. Table S5 lists primers used in this study.