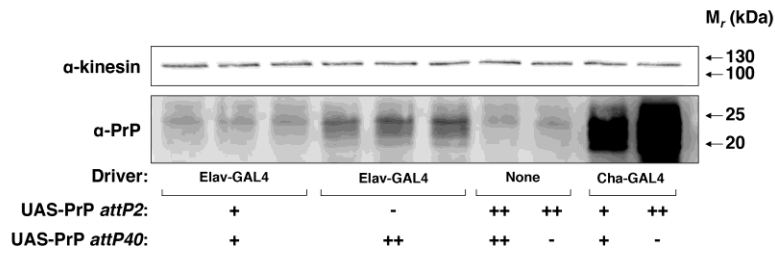
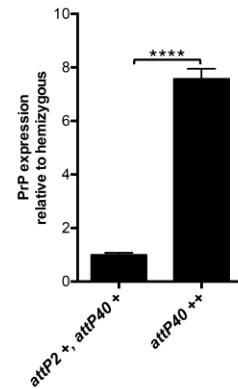


**A.****B.**

**Figure S1: Interallelic enhancement of UAS-PrP expression occurs at a different locus using a different GAL4 driver.** UAS-PrP inserted at *attP2* and/or *attP40* was expressed throughout the *Drosophila* nervous system, driven by Elav-GAL4 or Cha-GAL4. (A) Western blot of fly head homogenates (+ = hemizygous, ++ = homozygous at the indicated locus). Each lane represents a biological replicate. (B) Densitometry of Western blot signals from Elav-GAL4 lanes in panel A. PrP signals were normalized to the kinesin loading control and then to the non-allelic *attP2*, *attP40* UAS-PrP line. Error bars in part B represent standard deviations, with n = 3 for all samples; \*\*\*\* p < 0.0001.