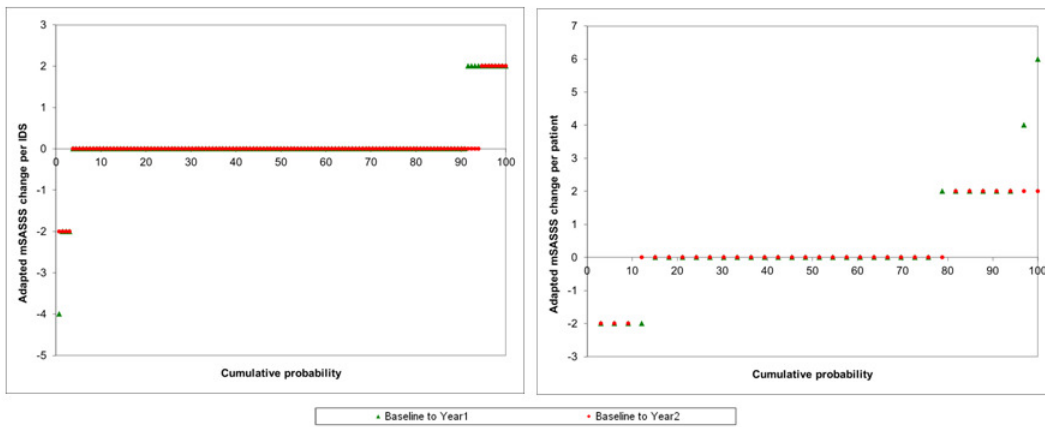
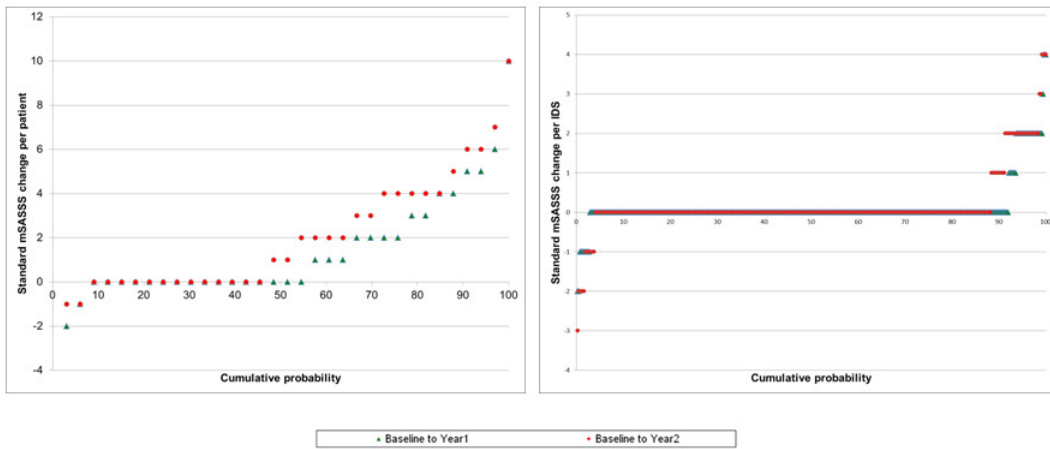


Supplementary Figure 1. Cumulative probability plots for the adapted mSASS by intervertebral disc space (left panel) and patient (right panel) by the second reader.



Supplementary Figure 2. Cumulative probability plots for the standard mSASSS by intervertebral disc space (left panel) and patient (right panel).



Supplementary Figure 3. Association of changes in computed syndesmophyte volume and height with the second physician's scores of changes over time in the computed tomography scans by the second reader. See Figure 4 for scoring categories. Scans of eight patients (32 intervertebral disc spaces) were read. Intervertebral disc spaces that were bridged at baseline were not scored for change in syndesmophyte height.

