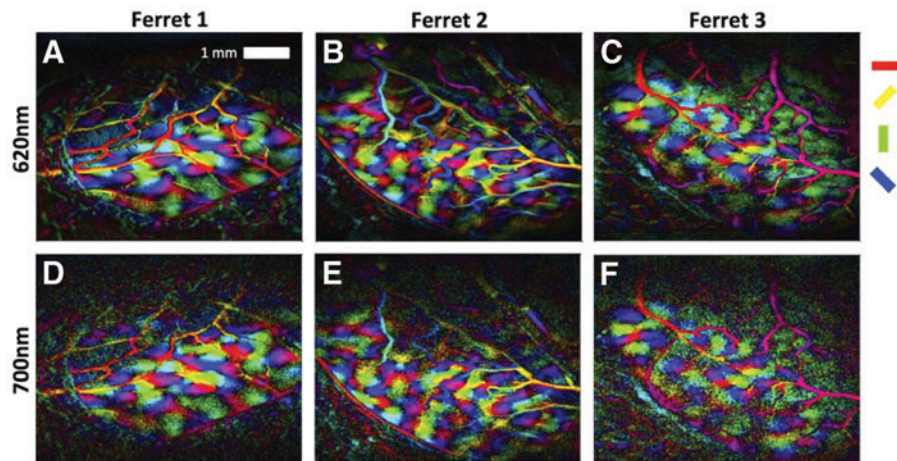


## Supplementary Data



**SUPPLEMENTARY FIG. S1.** Orientation preference maps generated for each ferret using evoked data obtained at 620 nm (A–C) and 700 nm (D–F). Spatial distribution of orientation columns was consistent at both wavelengths for all three ferrets. However, the responses measured by OIS at 620 nm were larger and the resulting maps were less noisy. OIS, optical imaging of intrinsic signal.