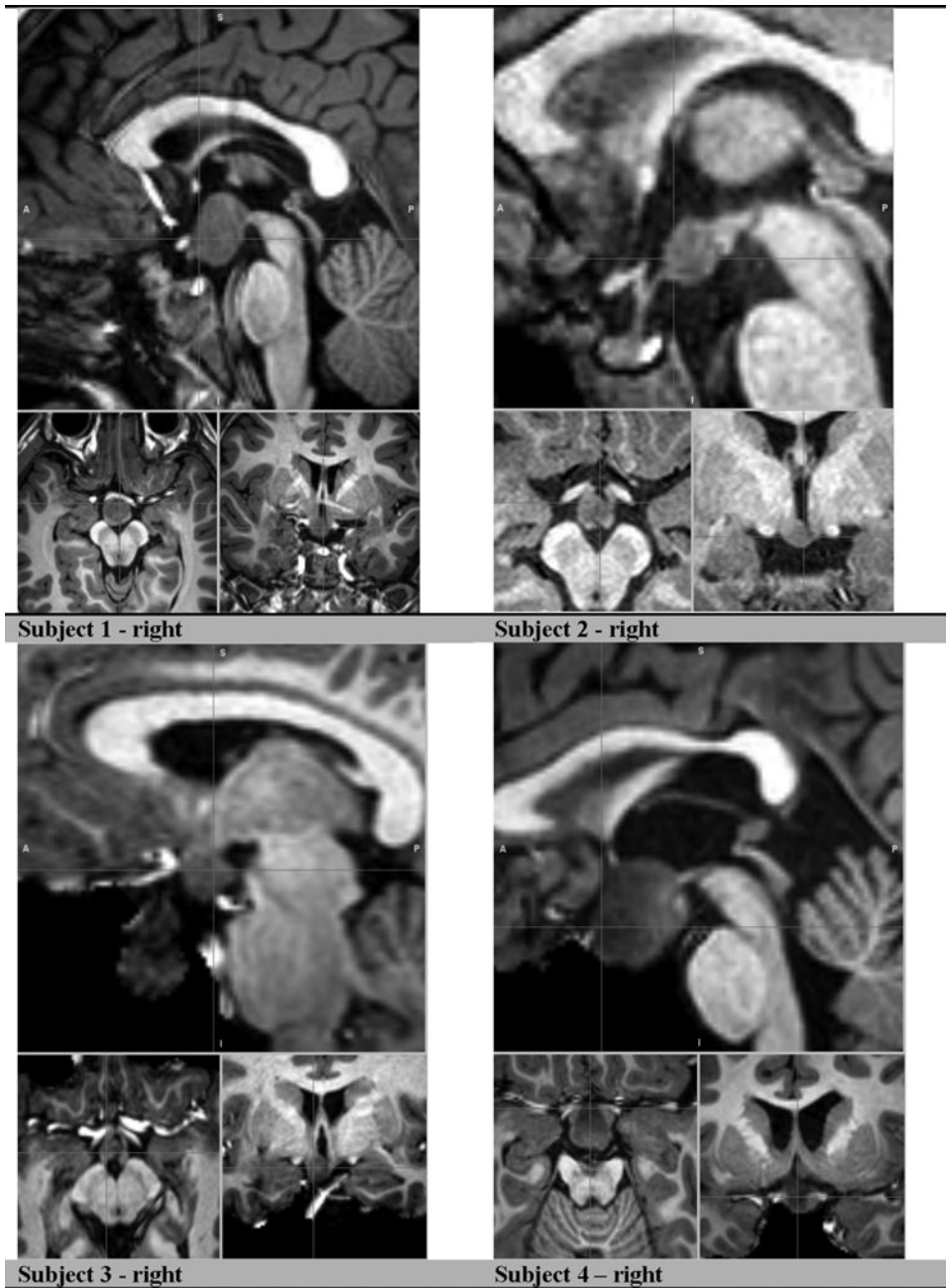
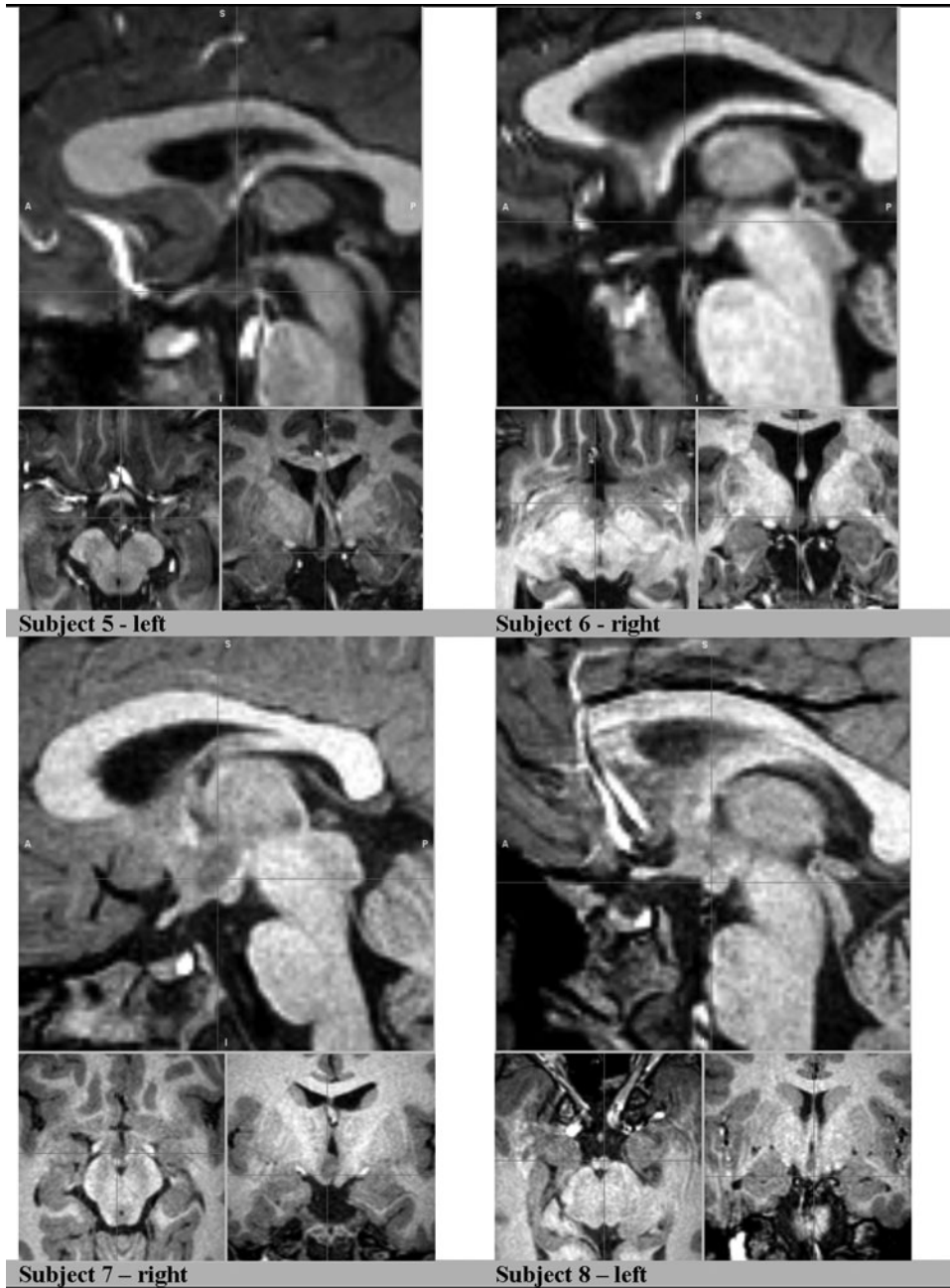


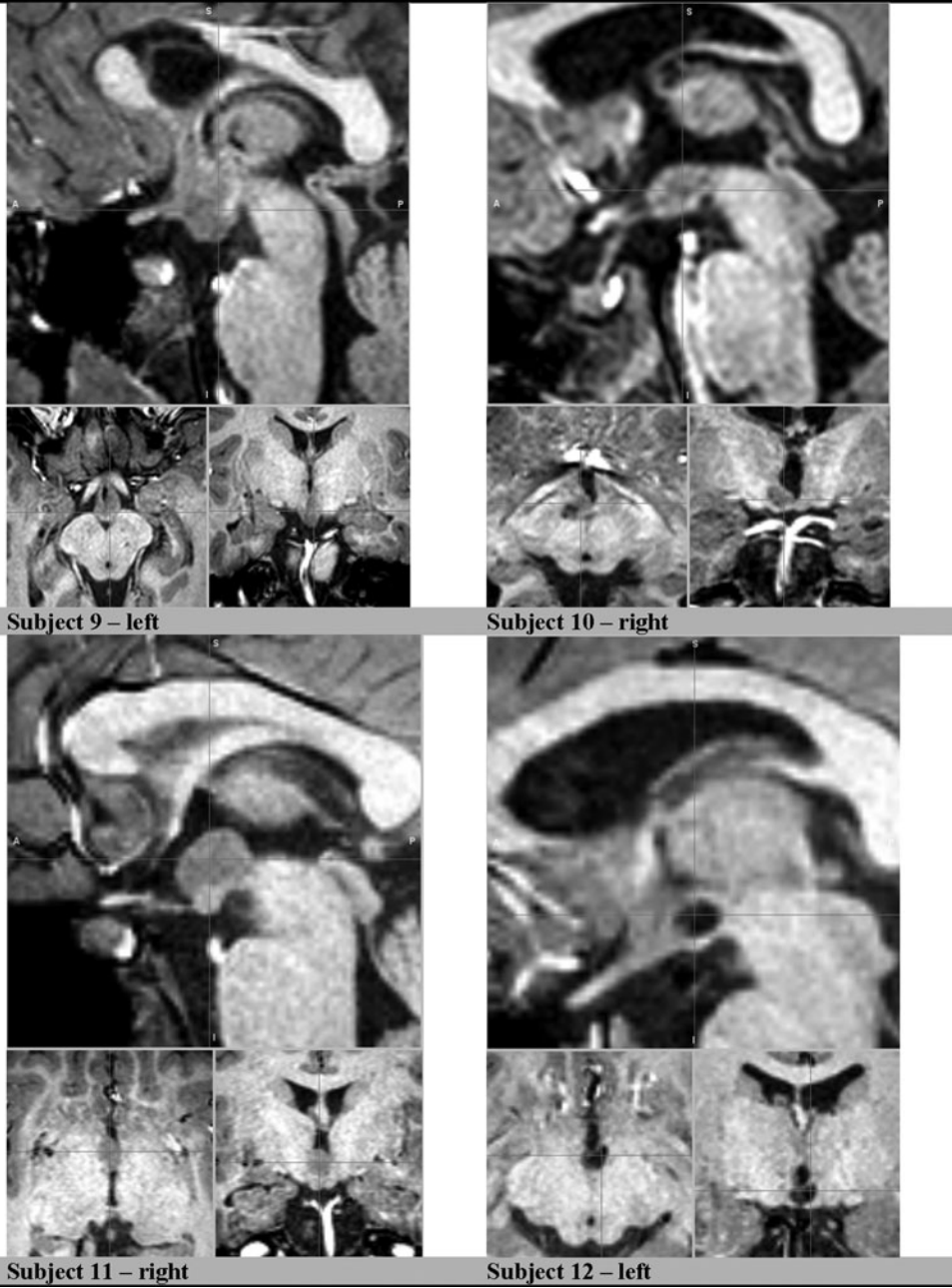
Supplementary Data



SUPPLEMENTARY FIG. S1. Enlarged sagittal with smaller axial and coronal images for each subject with crosshair on the hypothalamic hamartoma; asymmetric dominant hemispheric localization specified as left or right.



SUPPLEMENTARY FIG. S1. (Continued).



SUPPLEMENTARY FIG. S1. (Continued).