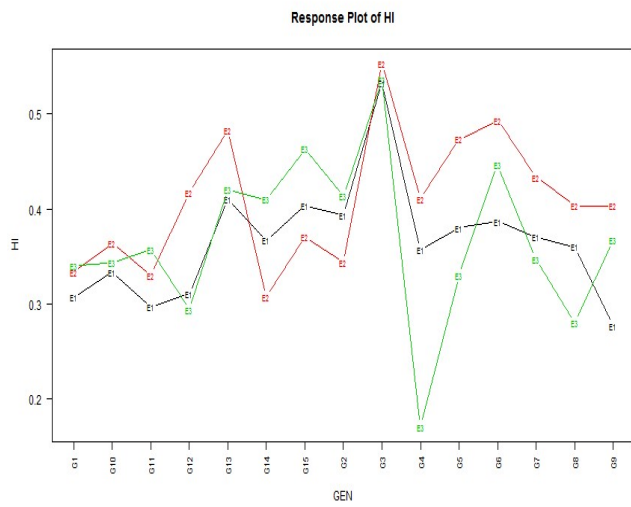
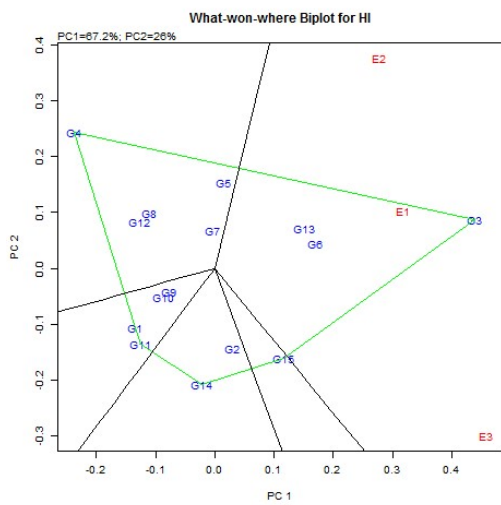
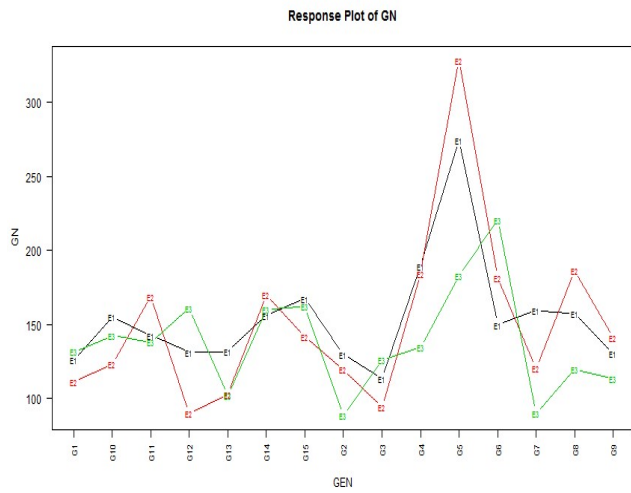
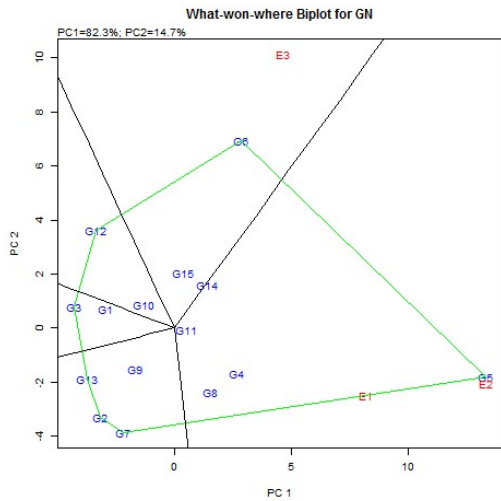
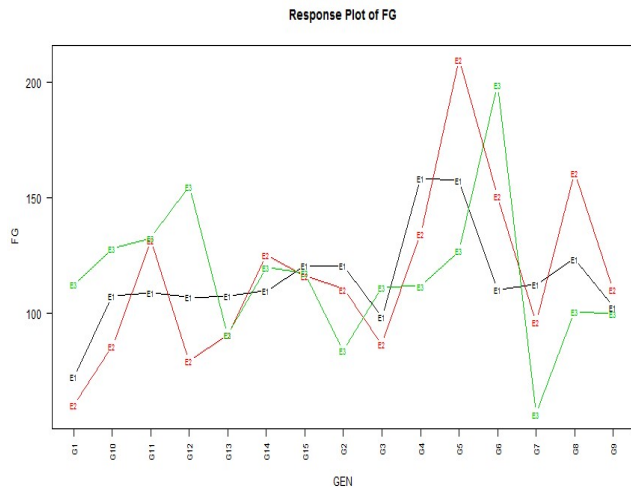
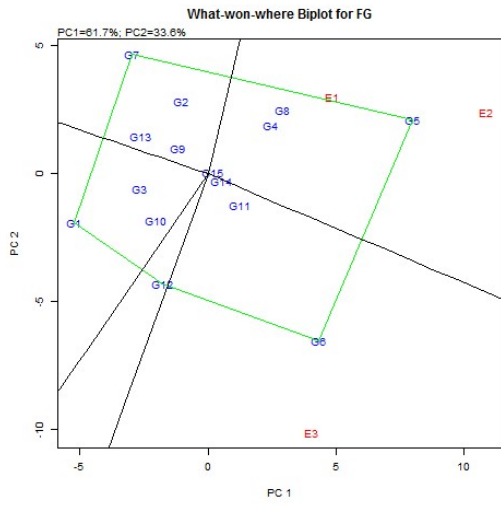
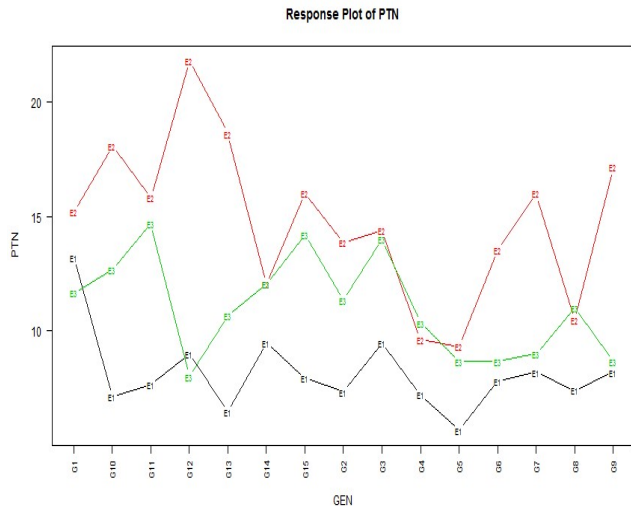
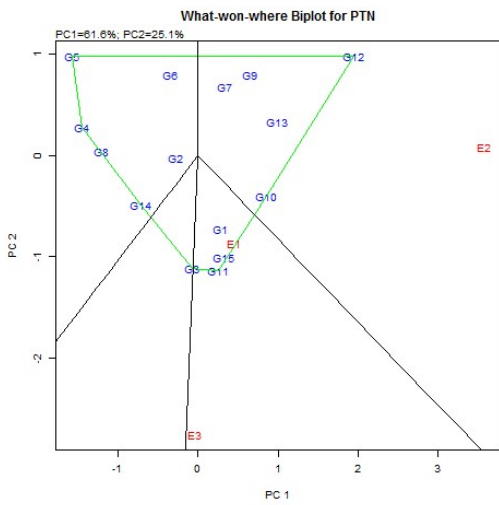
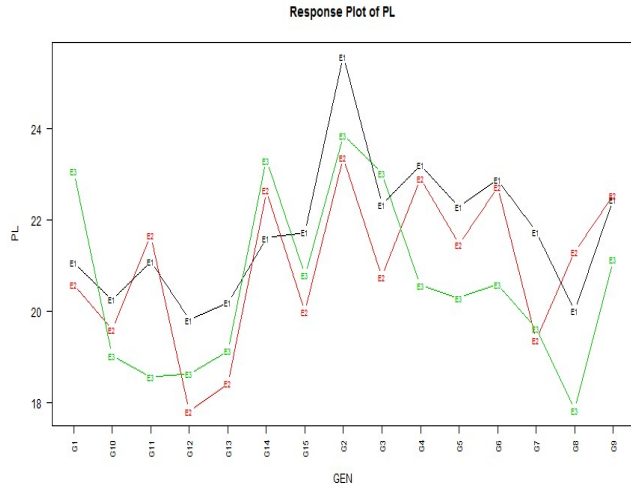
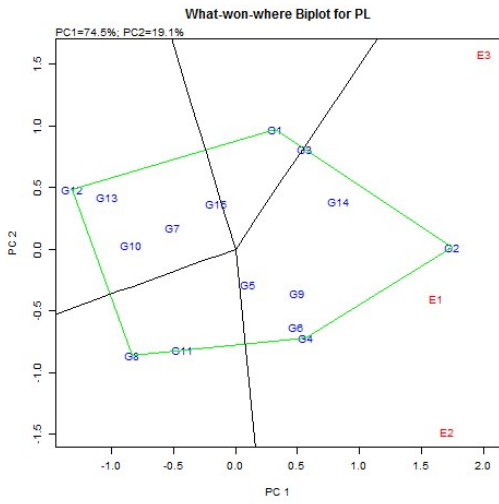
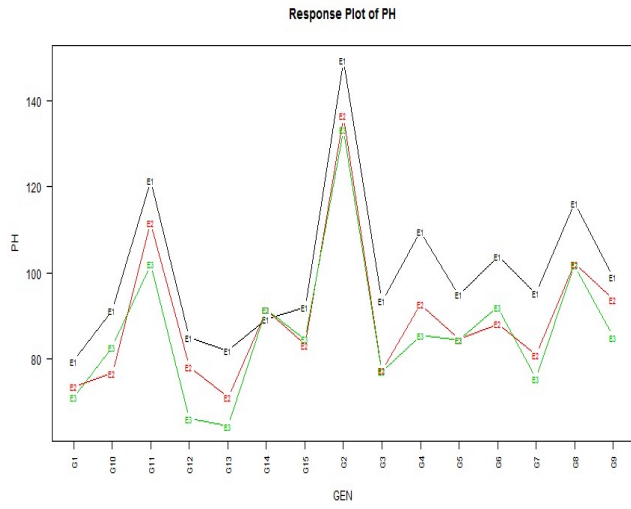
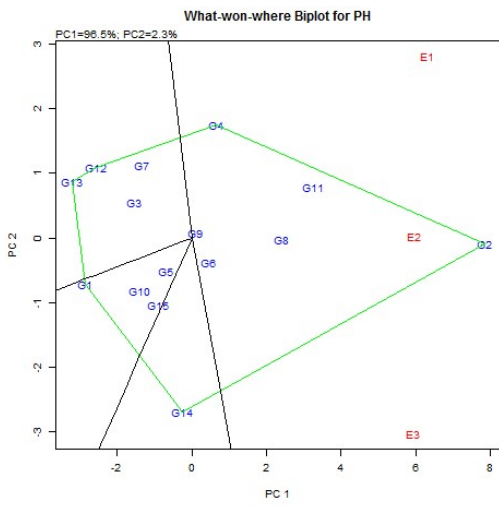


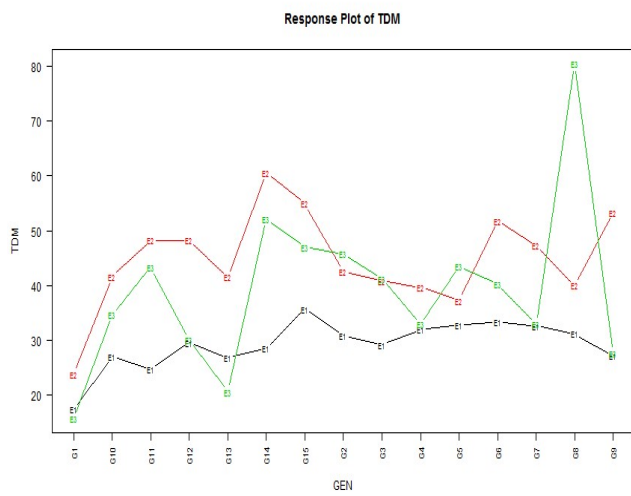
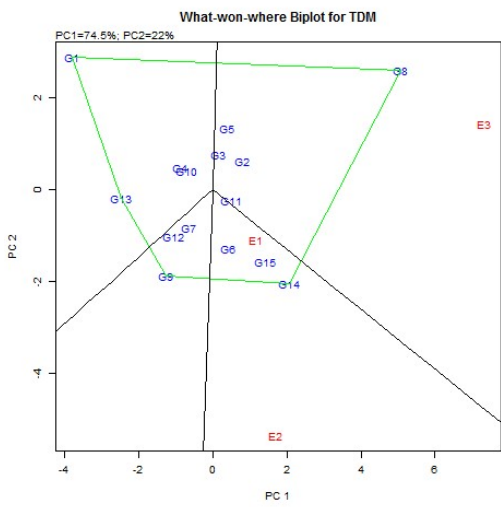
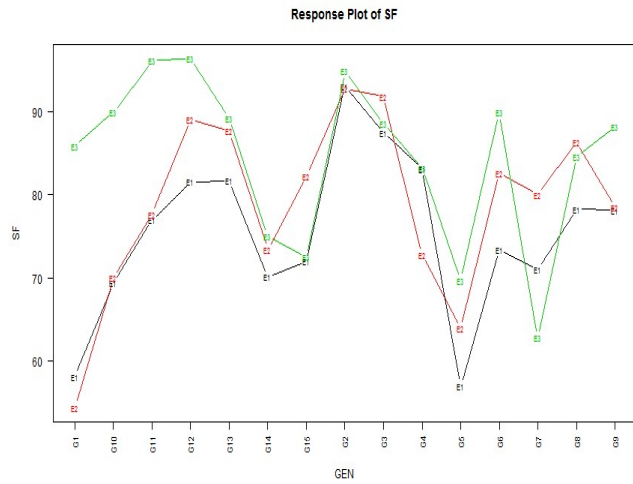
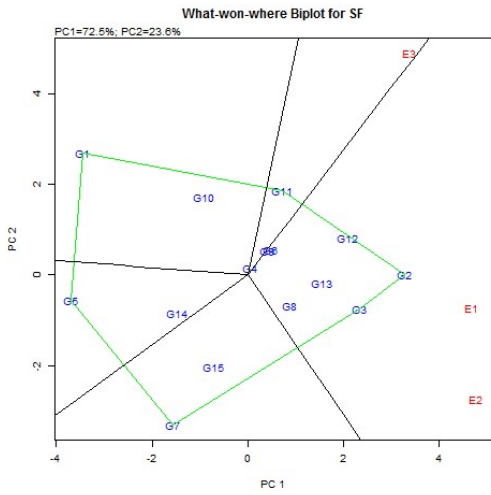
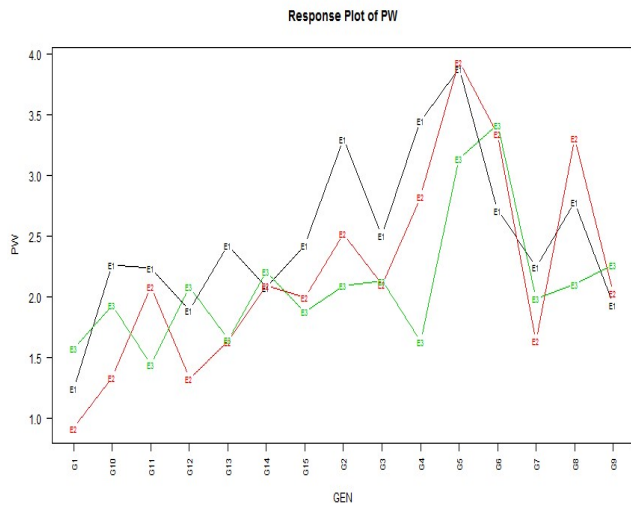
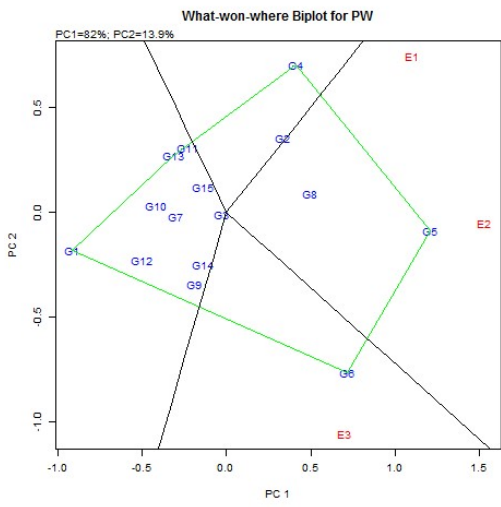
Supplementary Fig.2 Polygon views of the GGE biplot based on symmetrical scaling for ‘which-won-where’ pattern of rice genotypes in three environments



Supplementary Fig.2 Polygon views of the GGE biplot based on symmetrical scaling for ‘which-won-where’ pattern of rice genotypes in three environments



Supplementary Fig.2 Polygon views of the GGE biplot based on symmetrical scaling for ‘which-won-where’ pattern of rice genotypes in three environments



Supplementary Fig.2 Polygon views of the GGE biplot based on symmetrical scaling for ‘which-won-where’ pattern of rice genotypes in three environments

