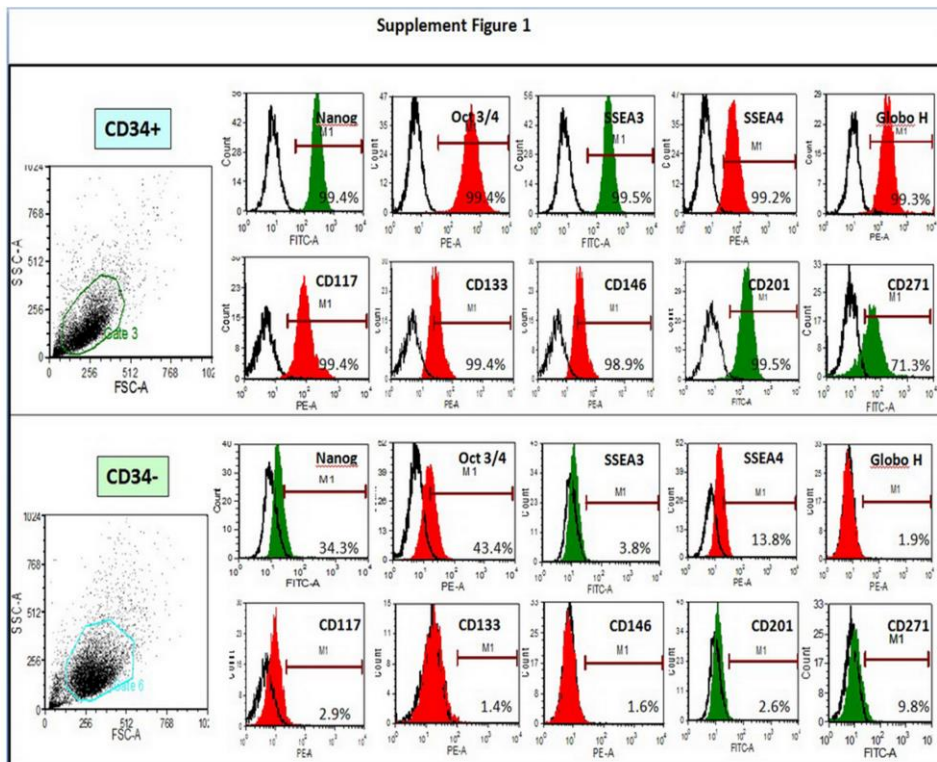
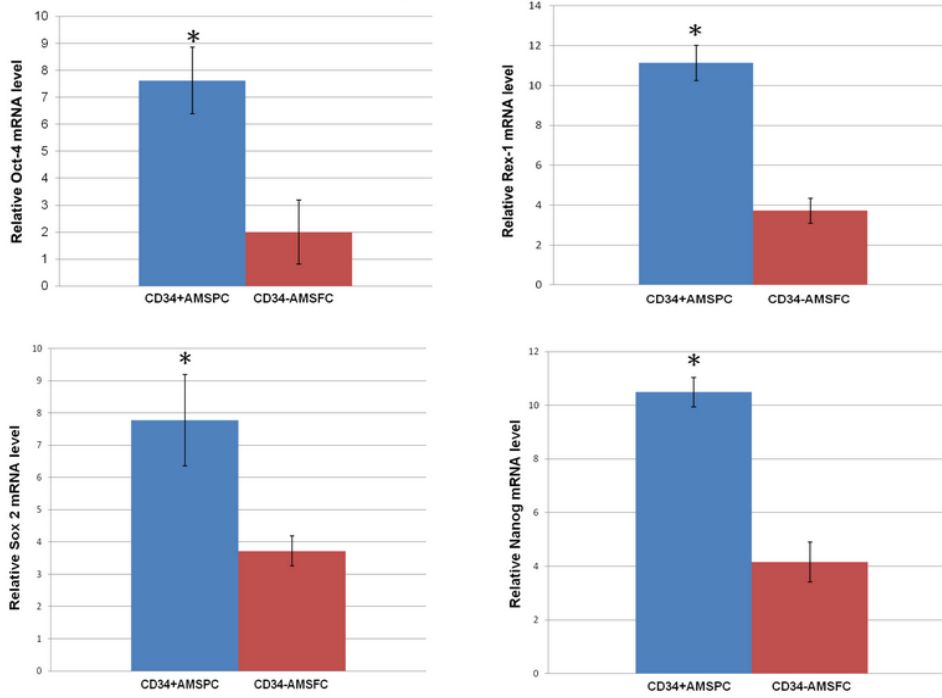


Supplemental Figures – Shih et al.



Cell Phenotype characterization of CD34+AMSPCs and CD34-AMSFs: comparisons of stem cell surface markers and embryonic antigens and transcription factors by FLOW Cytometry. CD34+: CD34+AMSPC; CD34-: CD34-AMSF

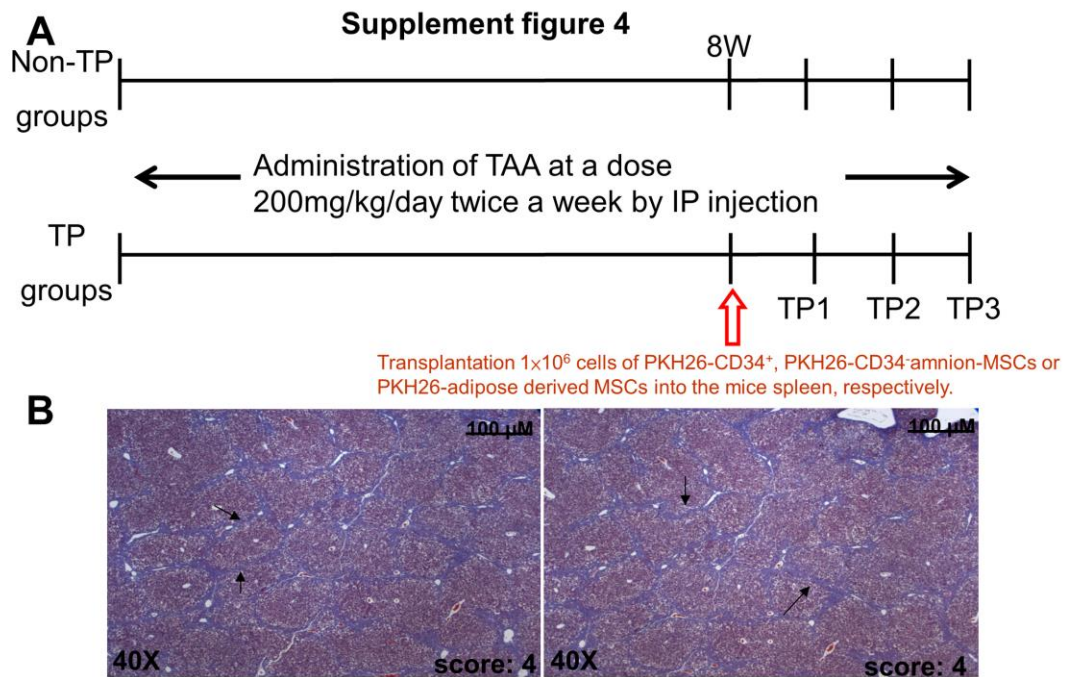
Supplement Figure 2



Comparison of transcription factors expression between CD34+AMSPC and CD34-AMSFC: RT-qPCR was performed to measure the relative expressions of Oct-4, rex-1, Sox-2 and Nanog using GAPDH as internal reference gene. Data were presented as mean \pm SD. Unpaired Student's t-tests were used to analyze the data. P<0.05 was considered statistically significant.

Supplement Figure 3

Gene Name	Primer Sequences (5' to 3')
GAPDH	F: GGTGTGAACCATGAGAAGTATGA R: GAGTCCTTCCACGATACCAAAG
SOX-2	F: GGAGAGTAAGAAACAGCATGG A R: GTGGATGGGATTGGTGTCT
REX-1	F: ACTACCTCAGACAGATCATCCA R: CTTCTCGAACCTTCCAGATCAC
4-Oct	F: GACAACAATGAGAACCTTCAG R: CGCCGGTTACAGAACCACAC
NANOG	F: CAGCTGTGTACTCAATGATAGATT R: CAACTGGCCGAAGAATAGCAATGGTGT
PPAR γ 1	F: GCTCTAGAATGACCATGGTTGAC R: ATAAGGTGGAGATGCAGGCTC
GLUT4	F: AGCAGCTCTCTGGCATCAAT R: CAATGGAGACGTAGCACATG
CBFA-1	F: CTCACTACCACCTACCTG R: TCAATATGGTCGCCAAACAGATTC
AP	F: TGAATATGCCCTGGAGC R: TCACGTTGTCCTGTTTAG
Collagen II	F: ATGATTCCCTCGGGCTCC R: TCCCAGTTCTCCATCTCTG
Aggrecan	F: GCAGAGACGCATCTAGAAATT R: GGTAAATGCAGGGAACATCAT



Liver fibrosis in the TAA-injured mice model: (A) Diagram of experimental design. (B) Histopathological analysis of the liver from TAA-injured mice by Masson's tri chrome staining. Liver fibrosis was observed in the bridging area after the 8-weeks treatment and at 1 week post transplantation. TP: transplantation; W: week; TP1: one week after transplantation; Score: fibrosis score. Scale Bar=100 μ m