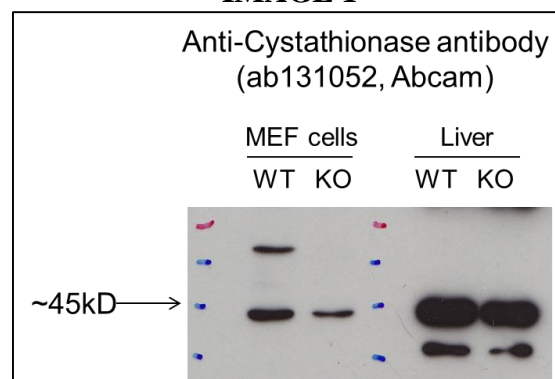


Supporting information

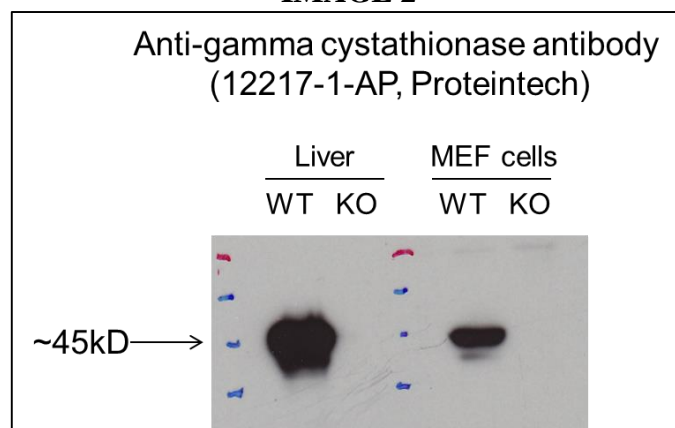
To determine the CSE expression in RBL-2H3, BMMC and HMC-1 cells, we initially used a CSE-antibody purchased from Abcam (ab131052); afterwards, we opted for a CSE-antibody from Proteintech (12217-1-AP), because subsequent experiments in WT and CSE-KO mice revealed poor specificity of the Abcam antibody. Firstly, we conducted a set of experiments in which we preabsorbed the Abcam antibody with an excess of Abcam CSE-blocking peptide (ab183695). The results indicated that the Abcam antibody was specific for the Abcam CSE-blocking peptide. To justify this conclusion more convincingly, we also tested the Abcam CSE antibody in a model of CSE-KO mice. However, from the immunoblot obtained from embryonic fibroblasts and liver tissue isolated from both WT and CSE-KO mice (see image 1, here below), we noticed that the Abcam antibody was not specific, suggesting that our previous results obtained with CSE blocking peptide were not reliable.

IMAGE 1



Thus, we repeated the above experiment with the Proteintech anti-CSE antibody (Image 2), which had already been used in various published papers (list of citations <http://www.biocompare.com/9776-Antibodies/368504-CSE/>).

IMAGE 2



Since this Proteintech antibody showed specificity for CSE (see Image 2), we conducted further experiments using this antibody. The findings are shown in Fig.2 in the manuscript.