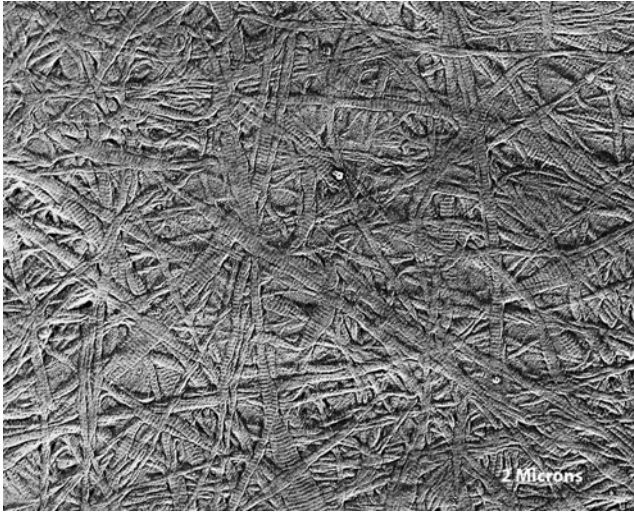


Supplementary Data



SUPPLEMENTARY FIG. S1. Quick-freeze–deep-etch transmission electron micrograph of DDCS surface. QFDE imaging (as in Guo *et al.*²⁵) was performed on the DDCS to ensure that the collagen structure on the surface of the construct would not provide any systematic contact guidance cues to the primary human corneal fibroblast culture system. The surface of the DDCS comprised arrays of randomly oriented type I atelocollagen fibrils, which exhibited a characteristic banding pattern.