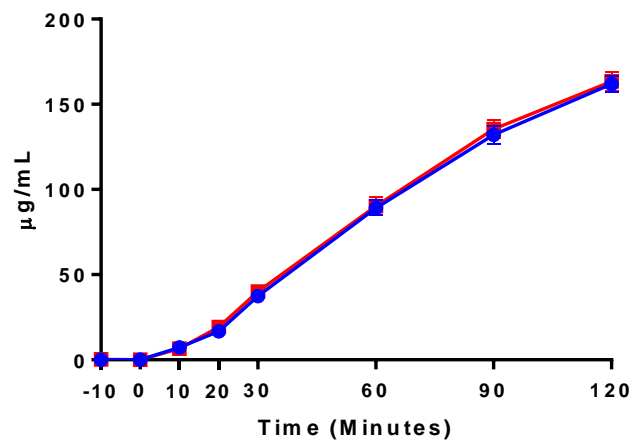
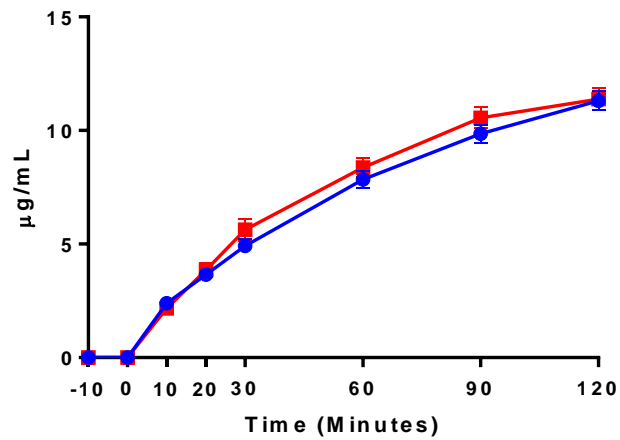


	Diet Rite Cola™	Seltzer Water	p-value
Acetaminophen AUC ($\mu\text{mol/L}/120 \text{ min}$)	6031.3 \pm 275.7	5681.4 \pm 224.0	0.13
3-O-methyl glucose AUC ($\mu\text{g/mL}/120 \text{ min}$)	10278.5 \pm 435.09	10046.1 \pm 357.18	0.52

A



B



Supplemental Figure S1. Serial data from OGTTs. Acetaminophen (A) and 3-*O*-methyl glucose (3-OMG) (B) are shown after ingestion of either Diet Rite Cola™ (■), or seltzer water (●) 10 minutes prior to a 75 gram oral glucose load.