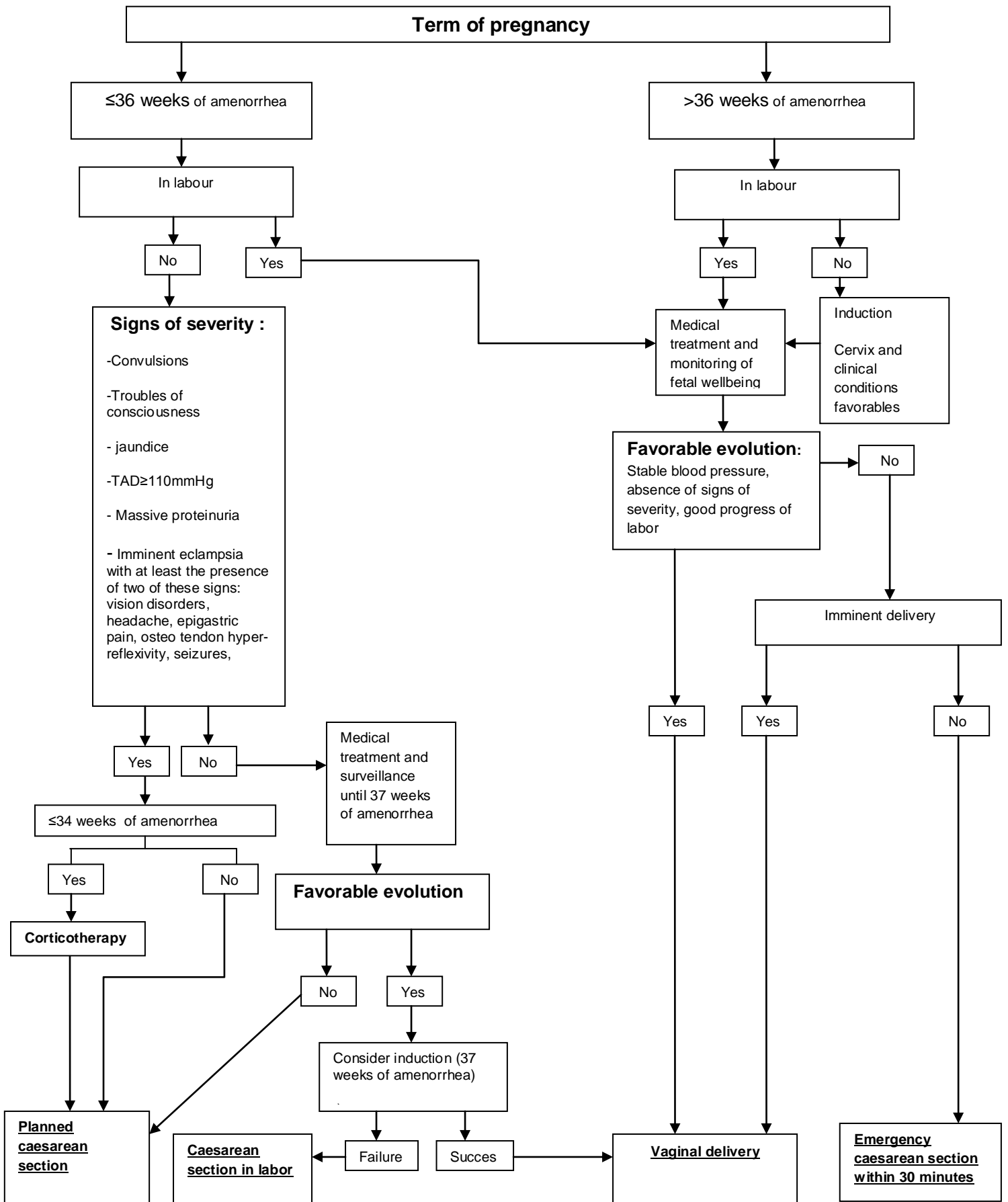


## Algorithm: Moderate pre-eclampsia

**Preeclampsia: Diastolic Blood Pressure (DBP)  $\geq$ 90 mmHg and proteinuria  $>$  0.3 g / l (two crosses)**



**Source: Recommendations for clinical practice of the African Society of Gynecology and Obstetrics (SAGO) and opinions of the group of experts**