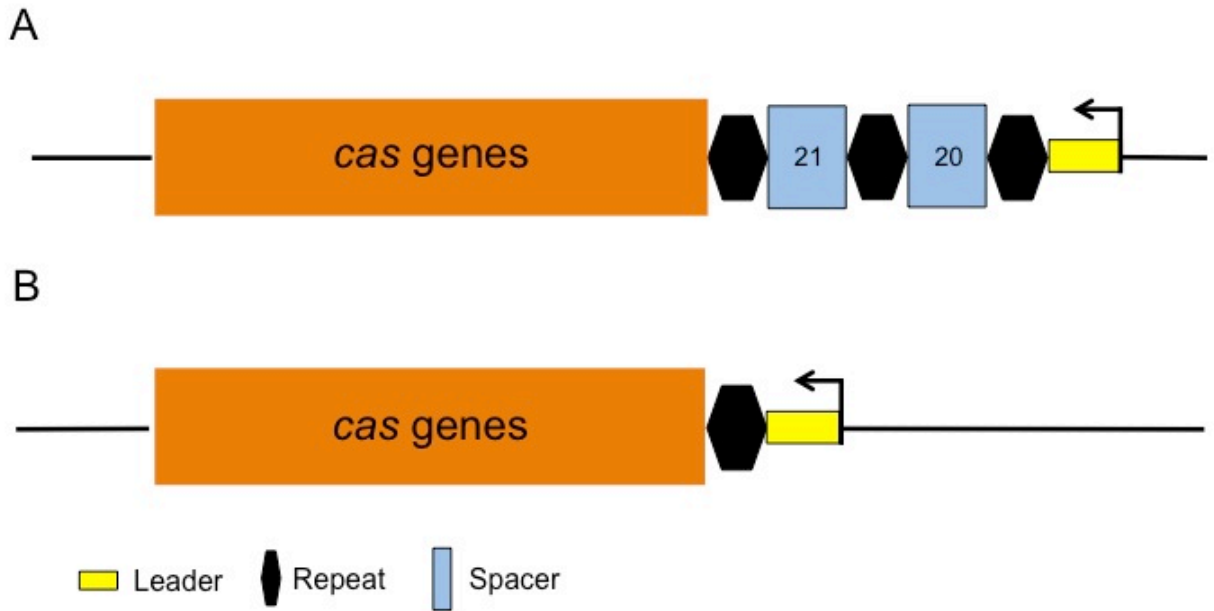


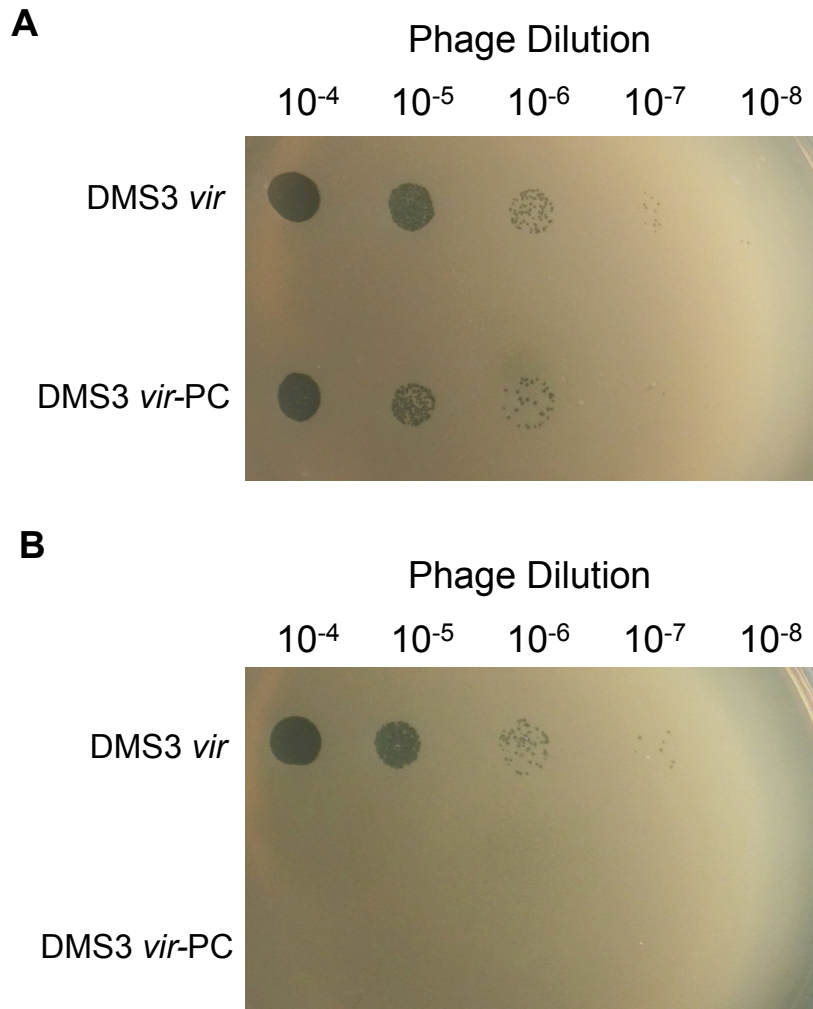
Supplemental Figures

1  
2



3  
4  
5  
6  
7  
8

**Figure S1.** Cartoon of the modified Type I-F CRISPR-Cas system in the *Pseudomonas aeruginosa*. (A)  $\Delta$ CRISPR1  $\Delta$ CRISPR2sp1-19 mutant or (B)  $\Delta$ CRISPR1  $\Delta$ CRISPR2 + CRISPR2 leader and repeat (CRISPR-minimum) mutant.

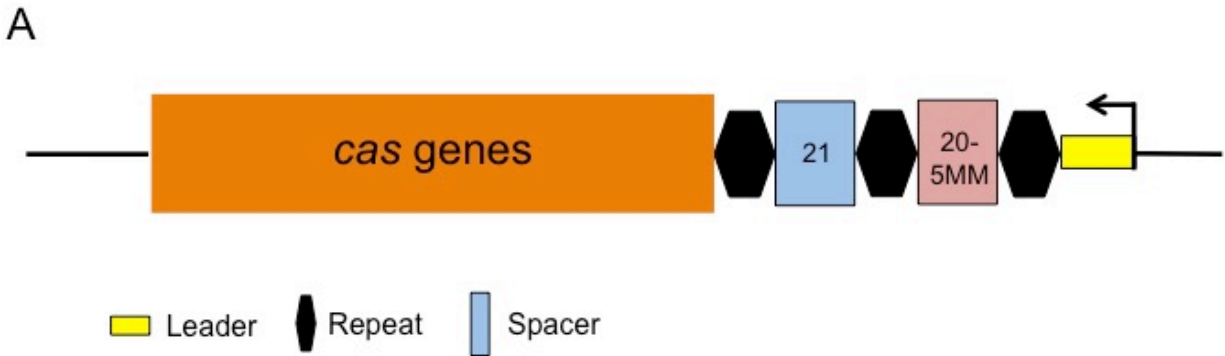


10

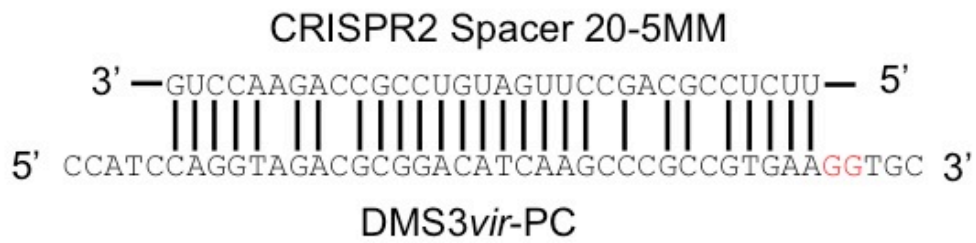
11 **Figure S2.** CRISPR2 Spacer 20 is functional in the  $\Delta$ CR1  $\Delta$ CR2<sub>sp1-19</sub> strain.

12 DMS3*vir* and DMS3*vir*-PC were 10-fold serially diluted and 3  $\mu$ L of each dilution was

13 plaqued against *P. aeruginosa* strains (A)  $\Delta$ CR and (B)  $\Delta$ CR1  $\Delta$ CR2<sub>sp1-19</sub>.



B



14

15 **Figure S3.** Cartoon of the (A) modified Type I-F CRISPR-Cas system in the  
 16 *Pseudomonas aeruginosa*  $\Delta$ CRISPR  $\Delta$ CRISPR1  $\Delta$ CRISPR2sp1-19 +sp20-5MM mutant  
 17 and (B) interaction of CR2\_sp20 and DMS3, and CR2\_sp20-5M and DMS3-*vir*PC

18