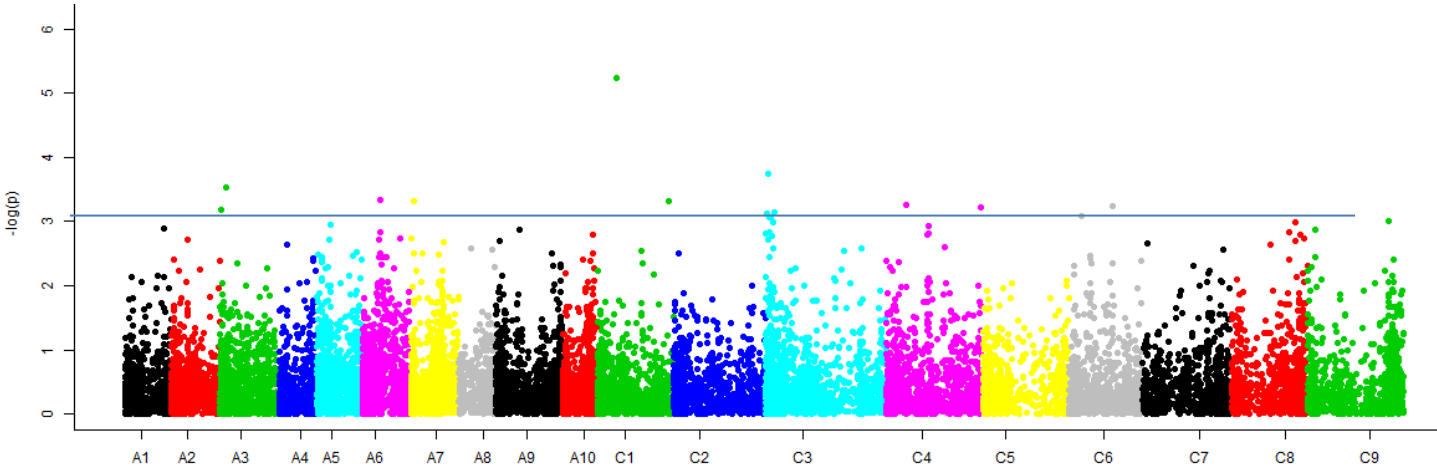
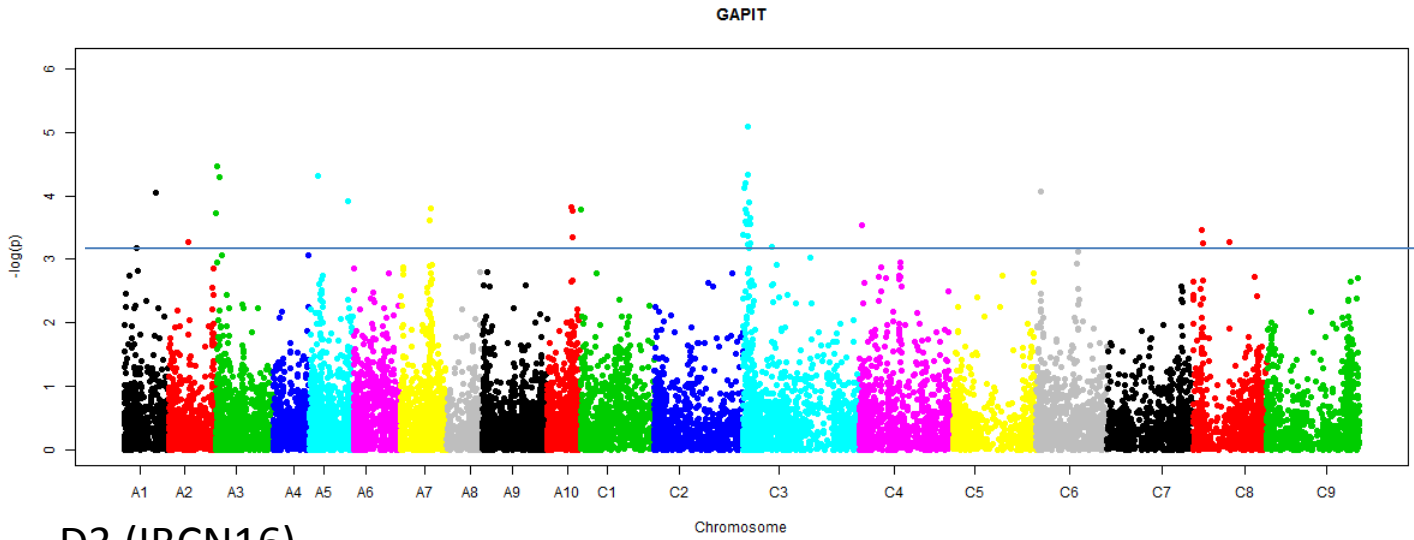


Figure S2: Manhattan plots showing genome-wide  $P$  values for associations between SNP markers and resistance to *L. maculans* evaluated with 12 single spore isolates (04MGPS021, 06MGPP041, D8, D9, IBCN13, IBCN15, IBCN16, IBCN17, IBCN18, IBCN75, IBCN76 and PHW1223) and ascospore shower test under greenhouse conditions in 179 canola accessions. Significant associations were tested at  $-\log_{10}(p)$  value of  $\geq 3$ .

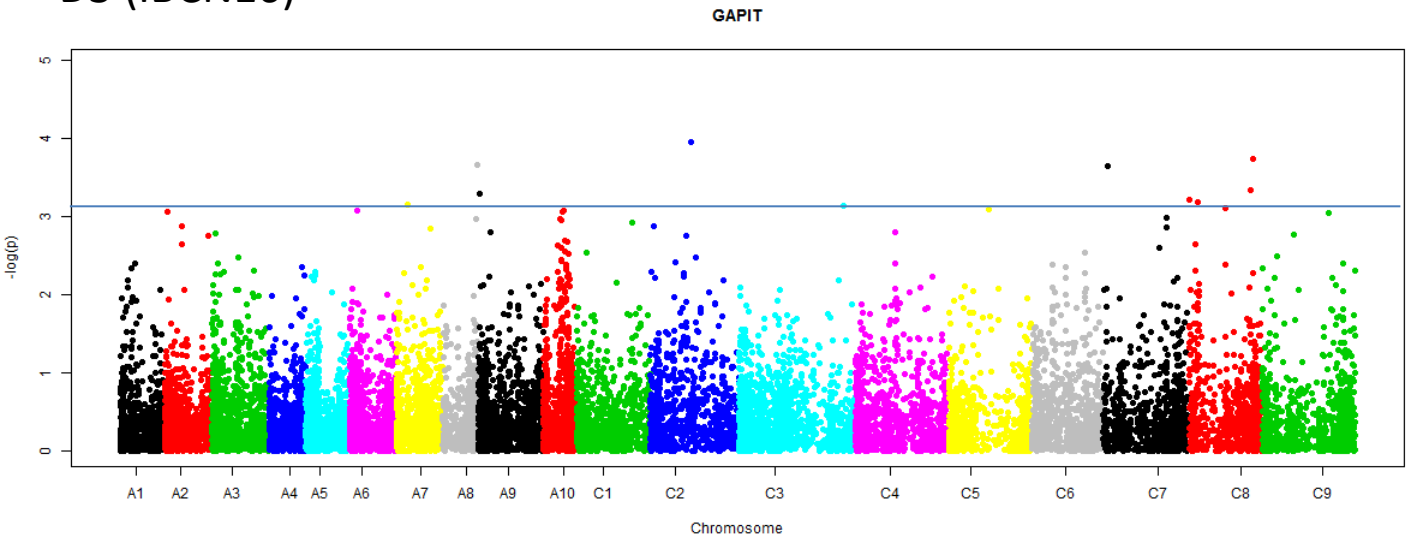
### D1(IBC13)



### D2 (IBC15)

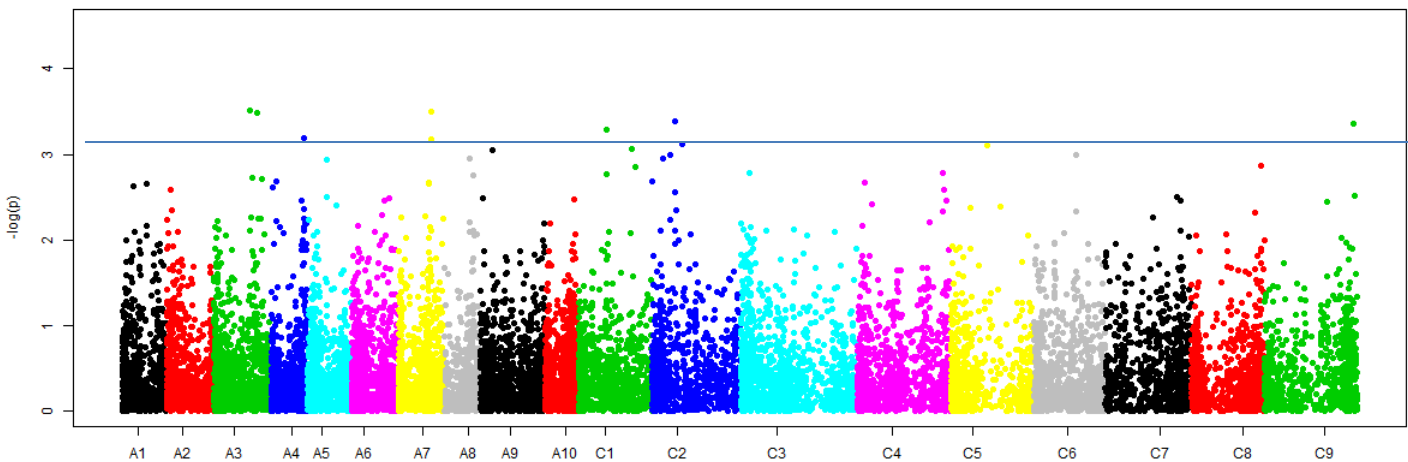


### D3 (IBC16)



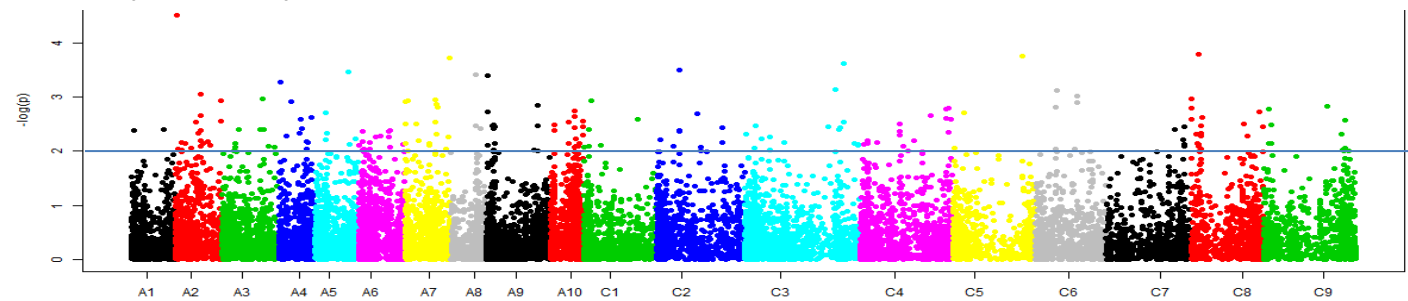
# D4 (IBCN17)

GAPIT



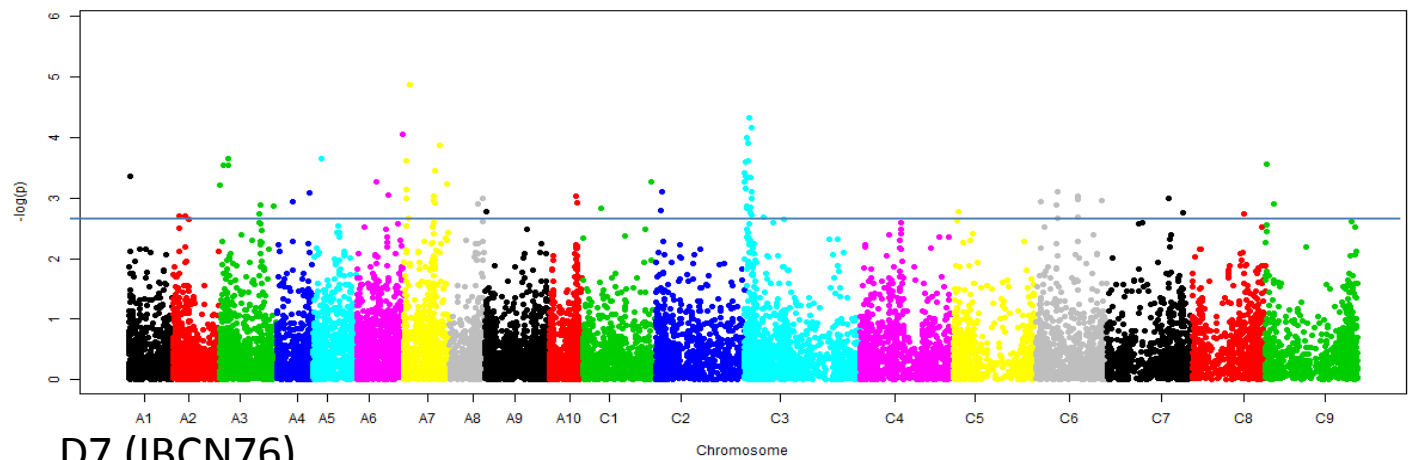
# D5 (IBCN18)

Chromosome



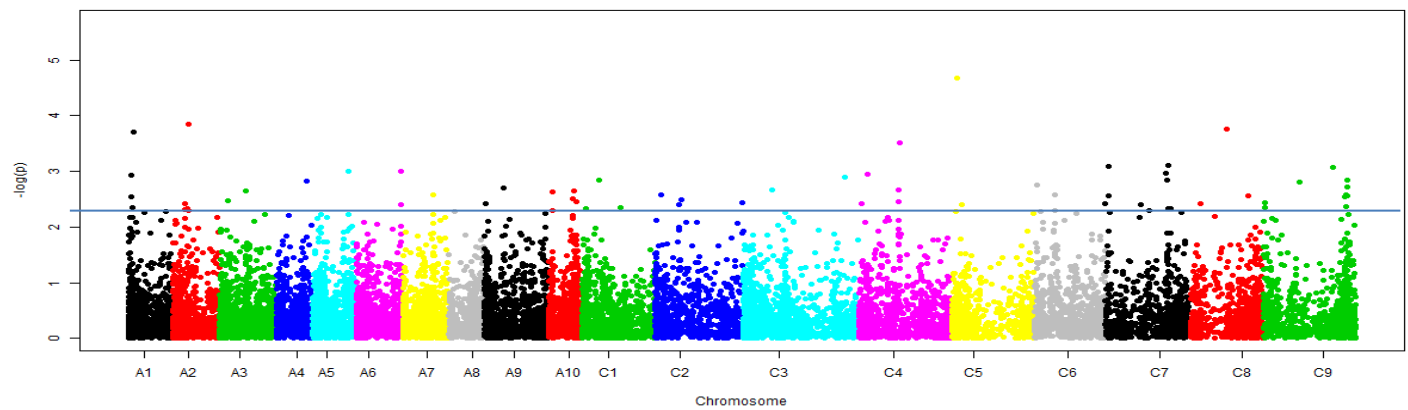
# D6 (IBCN75)

GAPIT

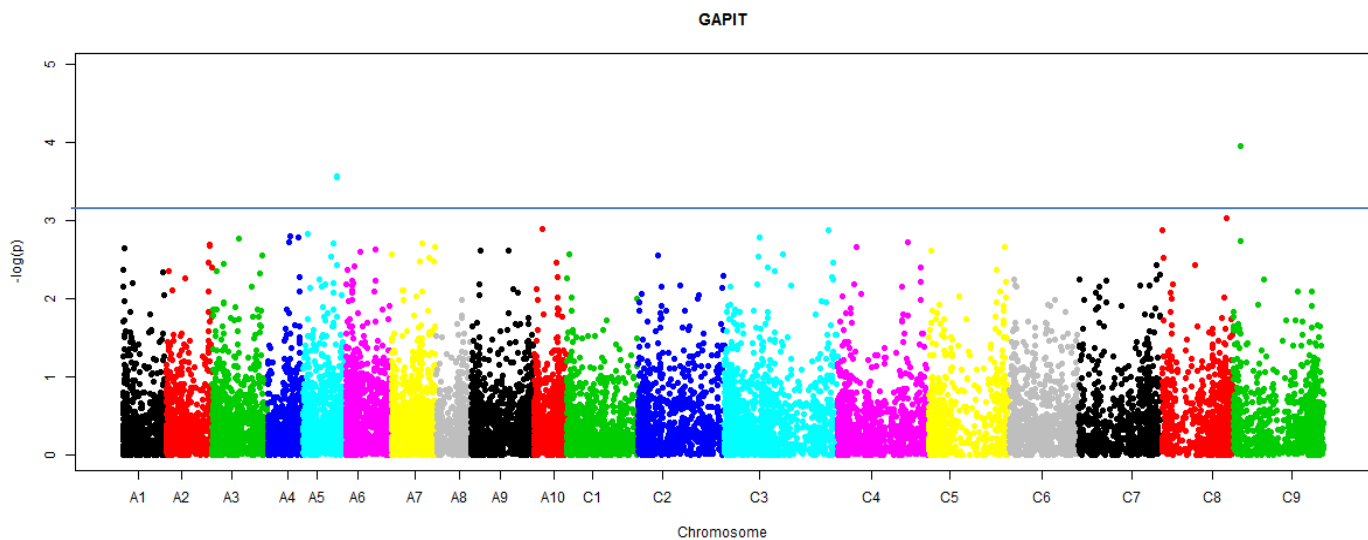


# D7 (IBCN76)

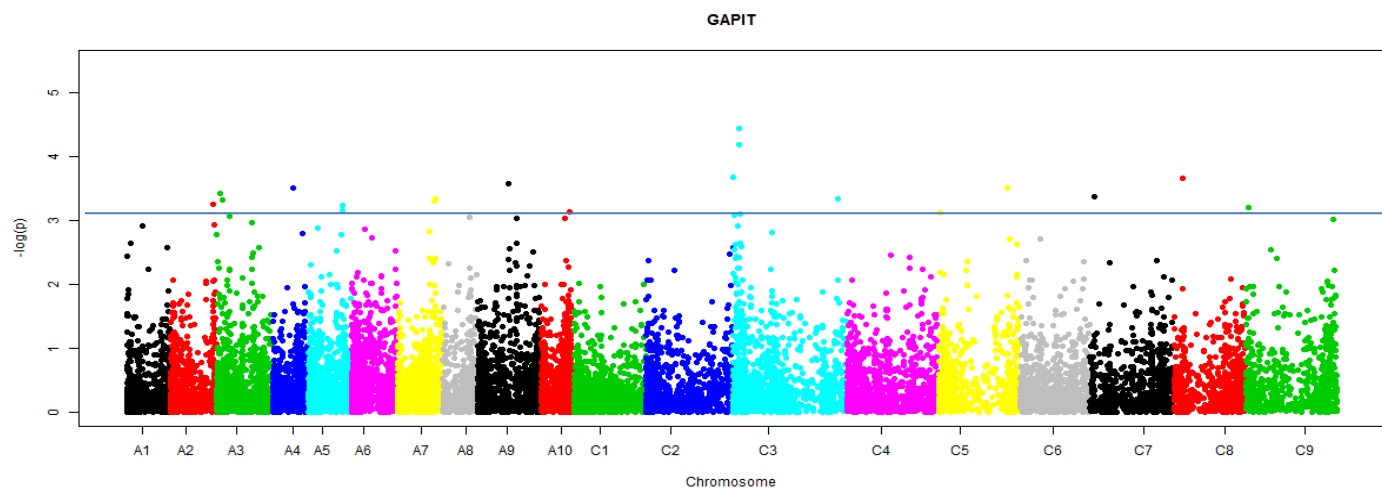
GAPIT



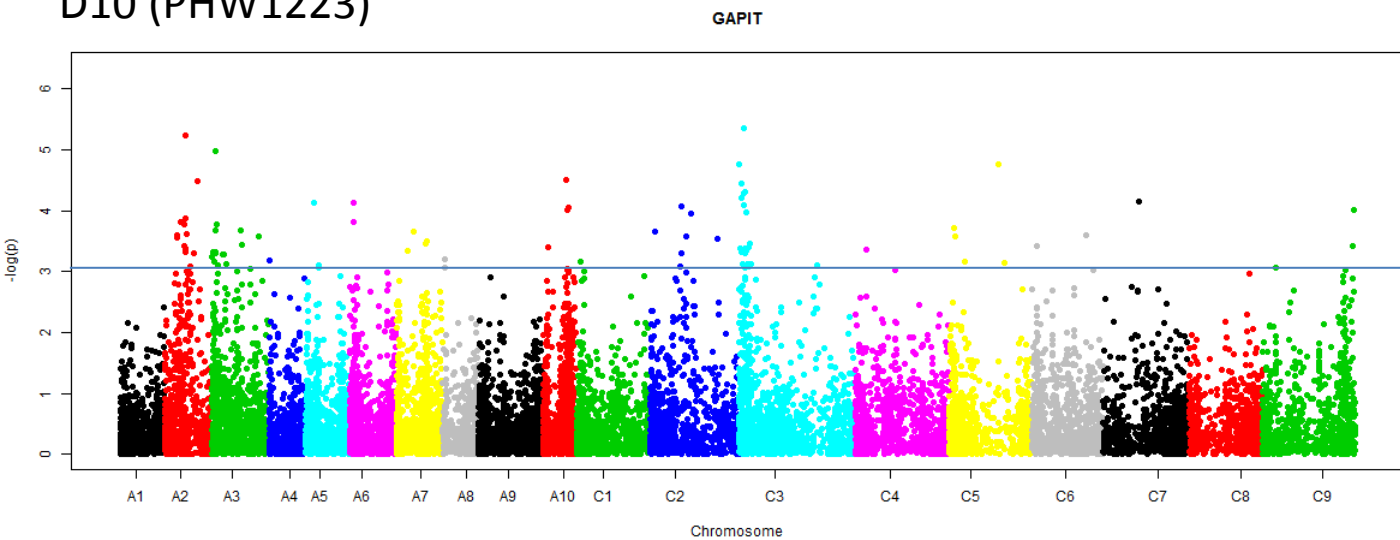
# D8



# D9

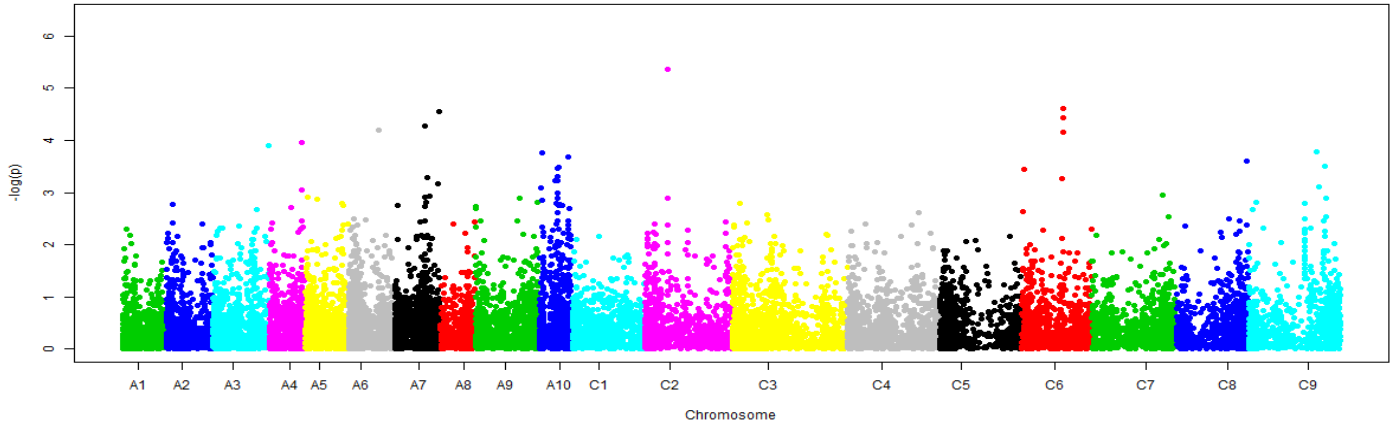


# D10 (PHW1223)



# 04MGPS021

GAPIT



# 06MGPP041

GAPIT

