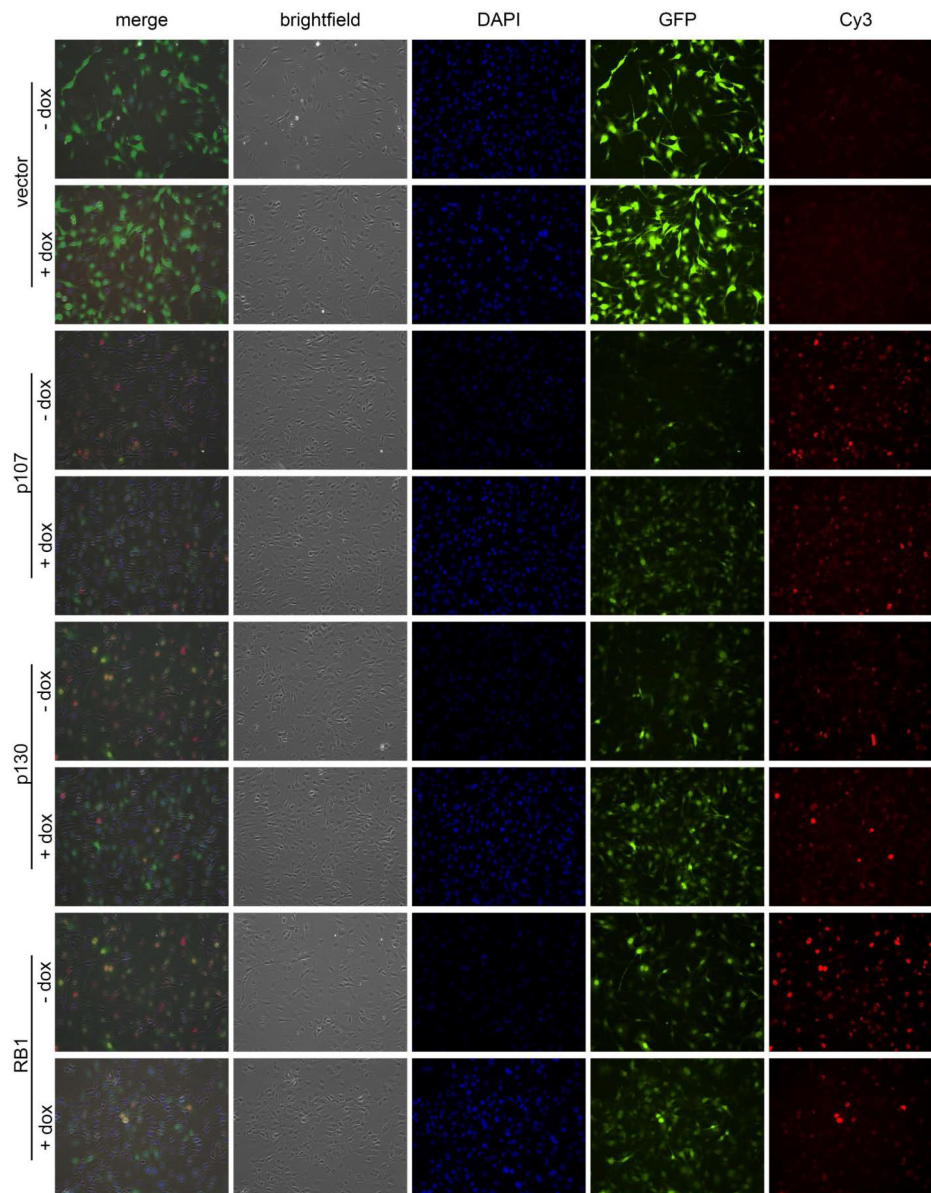


## RB1 is the crucial target of the Merkel cell polyomavirus Large T antigen in Merkel cell carcinoma cells

### SUPPLEMENTARY FIGURE AND TABLES



**Supplementary Figure S1: (corresponding to Figure 5 b, c and d): Detection of ectopic PP expression in MEF-TKO cells by Immunofluorescence.** PP triple knockout mouse embryonic fibroblasts (MEF-TKO) were manipulated for Dox-inducible expression of V5-tagged MCPyV-LT<sup>278</sup>. His-tagged versions of the different PPs in a vector co-expressing GFP were lentivirally transferred and 14 h later Dox-treatment was started. Following further 24 hours later cells were fixed with 4% formalin and subjected to immunofluorescence analysis using a His-Tag primary antibody and a Cy3 conjugated secondary antibody. Cell nuclei were stained with Dapi and by visualization of green fluorescence infection of the cells was monitored.

**Supplementary Table S1: shRNA sequences**

---

<b>MCPyV-TA</b>	ATCCACAAGCTCAGAAGTGACTTCTCTATTCAAGAGATAGAGAAGTCACTTCTGAGCTTGTGGAT
<b>RB1</b>	GTTAGGACTGTTATGAACACCTTGTTATGAACACCTTCCTGTCAGAGTGTCATAACAGTCCTAAC
<b>p107</b>	GATGTTGTCAGTGAAAGAGCTCGAGCTCTTTCACTGACAACATC
<b>p130</b>	GAGCAGAGCTTAATCGAATTTGAAAAATTCGATTAAGCTCTGCTC

---

Supplementary Table S2: Real time PCR primers

<i>human</i>			
	forward	reverse	PCR efficiency
<b>CCNB1</b>	CGCCTGAGCCTATTTTGGT	GCACATCCAGATGTTTCCATT	100,0%
<b>huCDC6</b>	CCTGTTCTCCTCGTGTA AAAAGC	GTGTTGCATAGGTTGTCATCG	95,2%
<b>PLK1</b>	AAGATCTGGAGGTGAAAATAGGG	AGGAGTCCCACACAGGGTCT	113,3 %
<b>MYB</b>	TCCACACTGCCCAAGTCTCT	AGCAAGCTGTTGTCTTCTTTGA	87,4%
<b>RPLP0</b>	CCATCAGCACCACAGCCTTC	GGCGACCTGGAAGTCCA ACT	87,9%
<b>p130</b>	AGGCCCTGGCTGGAAGTCTGA	GGCCACCTGGGGAAATCTGTTGAA	112,1%
<b>p107</b>	TTACCACGAAGCCGGAAGCAGAGG	AGTCATCCCCAATCATCCGAAAAT	102,1%
<b>RB1</b>	TATTAGCTAAAGGGGAAGTATT	ACATGGGAGGTGAGAGTTTA	118,4%
<b><i>RB1</i> gene</b>	GGTTTGGCAGAGAAGGCAGAA	AAAAAGTGGGGAAAGGGTAT	102,3%
<i>murine</i>			
	forward	reverse	
<b>MYBL2</b>	TGAGGCCCGAGAAGCAGAAGAGAA	CAGGGGTTTGGGCATGGTAGAGGA	112,4%
<b>CCNB1</b>	GCCAAGCGTGTGCCTGTGA	GCTCTTCGCTGACTTTATTACCA	100,2%
<b>MKI67</b>	GCCCAGGCAGTCCATAAAAC	GCGGGGCTGCCAACATCC	92,6%
<b>muRPL37</b>	TAGAAGCAAGATGACGAAGG	GTCGACTTCTGAAGGTGGTAG	88,2%